

# HQ Newsletter

No.5

August 2007



**AW**  
ARMITAGE WILLIAMS  
CONSTRUCTION

## Official opening

With the Headquarters taking shape, attention's now turning to when the building will be officially opened and then occupied.

The HQ's ceremonial opening will be performed by the Governor-General the Honourable Anand Satyanand, on Saturday 29 September 2007 in front of about 200 invited guests. Details of the opening ceremony and the opportunity for neighbours to also participate will be in the next newsletter.

### The Big Shift

After the ceremonial opening, the next event is the "big shift" which takes place over Show Weekend 16-19 November 2007. A total of 125 or so managers and staff are moving into the building, along with several tonnes of records and archives. A major feature of such a shift nowadays is the installing, commissioning and testing of the information technology systems (IT) and their backups. These are especially important in linking the Council's service centres at Darfield, Leeston and Lincoln with the new headquarters. .

At this stage, it's expected Selwyn people will be able to do business at the HQ from 19 November 2007, although it would be appreciated if non-urgent business could be delayed until later in the week, to give staff the opportunity to properly find their feet in the new offices.



## Road naming

The process for naming the new road that curves around the back of the Headquarters is well underway. The Selwyn Community Area Board is considering the large number of names that came from the local community, and the recommended name will be considered by the full Council at its September meeting.

## Interior finishing

The interior decoration for the building pods carries colour themes from the District into the working environment – these include red, yellow and orange. For instance Asset Management is based around the colour of a stop sign and Corporate takes a wheatfield's yellow as its theme.

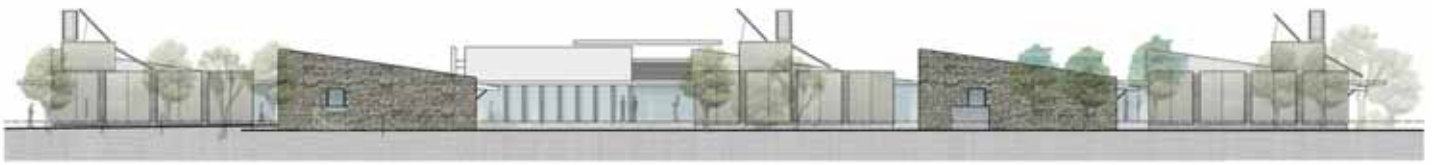
## Not just stone deep

There's much more to the remarkable stone cladding of the HQ building than meets the eye.

There's 125 of the ten-tonne, 15-square metre, exterior panels showing the stones. They make a major visual impact - and they're also making a major contribution to the building's environmental performance.

The stones are set in concrete, but underneath are layers of materials that ensure the panels help keep the interior of the building warm in winter and cool in summer.

The exacting task of making the panels was entrusted to the Ashburton firm of Bradfords Precast Concrete Ltd. The panels project was managed by Andrew Rasch, with Mike Kohalmi supervising.



Bradfords Precast Manager Greg Fleming says the company's perhaps better known for making large pre-cast concrete panels for large buildings – it has provided a total of 370 interior and exterior precast panels for the HQ . But part of its business also involves the skilful and painstaking work of creating stone cladding from stones hand-picked from Canterbury riverbeds.



For this building, the concrete and stone provide a significant amount of what's known as thermomass – a material with the ability to absorb, store and release thermal energy to help maintain an even temperature inside a building. Under the exterior stone and concrete are also a number of layers including polystyrene that enhance this ability. This means less energy is needed to heat the HQ building.

The thousands of riverbed stones for the HQ's cladding were hand-picked over several months for size (about 70mm thick) and colour by a Bradford's Precast team. There might millions of stones in a riverbed, but it's surprising how comparatively few met the specifications for the cladding, especially when the size of the stones is also included.

Back in Ashburton, the tonnes of stones were carefully sorted to produce just the right colour for each panel. The selected stones for each panel were carefully placed in a mould, and concrete poured over, followed by the various underlayers, including polystyrene sheets. Water-blasting and acid-washes followed to clean the stones and age the concrete (which was chipped away from around the stones), after which the panels were carefully transported to the site and lifted into place.

## How to contact us:

### During working hours

The site has a phone number, Ph: 347 2073, so please ring us if you have any concerns. Because the site manager can sometimes be hard to locate at short notice, it's best to ring and make an appointment if you want to discuss something about site operations.

### After hours

Please call the Selwyn District Council's phone number, Ph: 347 2800, and ask to speak to Armitage Williams. We have someone who is on call after hours who can help you with any concerns. If you see anyone acting suspiciously on the site, we would also appreciate a call to this number.

*On behalf of Armitage Williams*

**Paul Blackler**  
General Manager Construction

*On behalf of Selwyn District Council*

**Paul Davey**  
Chief Executive

