

MEETINGS

You can speak on matters of concern during the first 15 minutes of each Council or Committee meeting. Please contact **Sue Elder** at the Rolleston office well in advance if you wish to speak.

Township, Hall and Reserve Committees, please note: If you wish to advertise your meeting please let **Lee Brehaut** know as soon as possible by faxing (03) 347 2799, e-mailing lee.brehaut@selwyn.govt.nz, or phoning 347 2964 or 318 8338.

COUNCIL

Selwyn Central Community Board

- Thu 18 June, 4pm, Executive Meeting Room One, Rolleston Council Buildings.

Transportation & Road Safety Sub-committee

- Thu 18 June, 9.30am, Executive Meeting Room One, Rolleston Council Buildings.

Malvern Community Board

- Mon 22 June, 4pm, Old Darfield Service Centre.

Council Meeting

- Wed 24 June, 1pm, Council Chambers Rolleston.

COMMUNITY

Coalgate Township Committee

- Tue 16 June, 7.30pm, Coalgate Fire Station.

Darfield Township Committee

- Thu 18 June, 7.45pm, Darfield Recreation Centre.

Darfield Recreation & Community Centre

- Mon 6 July, 7.30pm, Darfield Recreation Centre.

Glentunnel Residents Association

- Mon 6 July, 7pm, Community Centre – Glentunnel.

Halkett Community Centre

- Wed 24 June, 8pm, Community Centre.

Lake Coleridge Community Committee

- Fri 19 June, 8pm, Lake Coleridge Hall.

Leeston Community Committee

- Mon 6 July, 7.30pm, Leeston Community Room.

Leeston Park Association

- Mon 29 June, 7.30pm, Leeston Park Pavilion.

Lincoln Community Centre Management Committee

- Mon 22 June, 7.30pm, Lincoln Community Centre – Supper Room.

Rolleston Community Centre Committee

- Thu 25 June, 7.30pm, Rolleston Community Centre.

Rolleston Residents Association

- Mon 22 June, 7.30pm, Rolleston Community Centre.

Sheffield/Waddington Community Committee

- Thu 25 June, 7.30pm, Sheffield Community Hall.

Southbridge Advisory Committee

- Tue 16 June, 7.30pm, Southbridge Fire Station

Springston Recreation Reserve and Associated Sports Committee

- Wed 17 June, 8pm, Errol Tweedy Pavilion, Springston Reserve.

Templeton Residents Association

- Mon 29 June, 7.30pm, Templeton Community Centre.

CARE FOR A CUPPA?



Caring for Carers Inc
Thursday 18 June at 10.30am
Dragonfly Cafe & Gifts, Rolleston

Anyone caring for someone with a long-term disability or illness is welcome to join other carers for a cup of tea or coffee provided by **Caring for Carers**. New members are always welcome. Phone (03) 377 8426

SELWYN YOUTH PROJECT WINS \$\$\$

A new Selwyn youth project has won \$35,556 from the Government's Youth Development Partnership Fund. Last week, Youth Affairs Minister **Paula Bennett** congratulated the Selwyn District Council for Destination E-merge, a co-project between the Council and a church-based group, the Youth Southwest Christchurch Trust.

Destination E-merge focuses on youth in Rolleston and West Melton. It has youth workers in Rolleston School and runs a Friday Youth Club. It also helps young folk to join, and make more use of, local activities and services.

Mayor **Kelvin Coe**, welcomed news of the grant which will cover Destination E-merge's second year of funding until October 2010.

"Ours is a fast-growing district with many young families," he said. "And we appreciate this opportunity to do more for them".

The Fund, which enables councils and the Ministry of Youth Affairs to work directly with young people, gives more than \$700,000 to youth projects across the country.

"The great thing about these projects is that they get young people actively engaged and helping their peers," said Ms Bennett.

TEMPORARY SHUTDOWN

Upper Ellesmere Water Race Scheme

Mon 29 June – Friday 3 July

A full shutdown of the upper Ellesmere water race scheme is planned for Monday 29 and Tuesday 30 June to allow desilting of the intake pond.

Then, from Wednesday 1 to Friday 3 July the **Sharlands Road** water race will be shut down for EDI Downer Works to complete work on the race necessary for the widening of SH1/Sharlands corner.

The intake will be shut down from late afternoon on Sunday 28 June to the afternoon of

Tuesday 30 June, and flows to Sharlands Road will be restored when works are completed or on the morning of Friday 3 July, at the latest. Restoring supply to end-of-line users will take longer.

We apologise for any inconvenience caused to landowners. You can see a map of the affected area online at www.selwyn.govt.nz or call **Vicki Rollinson** on 347 2800.



CHIRP up and beat Swine Flu

Depressed about swine flu? Flu germs are passed on by coughing and sneezing and by hand contact with infected surfaces. To help reduce the risk, you need to **CHIRP**, as follows:

C – Cover your cough – with a tissue, or by coughing into your upper arm.

H – Hand-wash, well and often, with soap

I – Isolate yourself from flu sufferers, and stay home if you are sick

R – Remove germs by regularly disinfecting contact surfaces (e.g. keyboards, handles, utensils)

P – Prepare a pandemic survival plan and kit for you and your family.

Find out more at www.selwyn.govt.nz



with Sarah Wilson, Active Communities Coordinator



It's a seated revolution & it's growing!

You may remember that, in the past, I have talked about Jan's Sit and be Fit class. Well, she's expanded and is now not only at the Baden Powell Centre in Leeston but also at the Rolleston Community Centre!

A great thing about this class is that you can take it at your level – you don't even have to sit. If you want to stand and be fit, then that's fine too!

Don't forget there are a number of classes in the district suitable for people who would like a lighter workout. Check the times below and join a class today!

Sit and Be Fit

- Rolleston Community Centre - \$3 per adult
Wednesdays, 1:30-2:30pm (with cuppa afterwards)

Contact:

David Pryor on 347 2882



Jan and a class member at the Rolleston Community Centre enjoying Sit and Be Fit.

Movement to Music

- Baden Powell Centre – Leeston Park - \$3 per adult

Gentle Aerobics

– Mondays, 8:30-10am.

Sitting Aerobics

– Wednesdays, 9-10am.

Moderate Aerobics

– Wednesdays, 4-6pm.

Contact:

Jan McKay on 324 3654

Darfield Exercise Group

- Darfield Recreation Centre – \$2 per adult

Wednesdays, 10-11:30am (Cuppa included)

Contact:

Beryl Hughey 318 8632

BUILDING QUERIES & INSPECTIONS
New Phone Number:
347 2839

COGS (Community Organisations Grants Scheme) Closes 31 July

The latest funding round for COGS will close on **Friday, 31 July**. Community groups can apply for COGS funding online at www.cdgo.govt.nz

Contact:

Philippa Aitken, COGS Advisor, on 03 353 8293.



with David Pryor

Term Two has nearly finished (that was quick!) so we're now planning for Term Three at the Rolleston Community Centre. Most programmes will be returning, but here are some new ones:

Ceroc Dance

Saturdays 8-10pm in the Stadium and Community Room. Note: Free introductory "have a go" session Saturday 18 July, 8-10pm in the Stadium

Volleyball

Tuesdays 3.45-6.30pm in the Stadium

Dabble in Scrabble plus other board games and cards
Mondays 2.15-4.15pm in the Lounge

Tai Chi for Beginners

Fridays 10.30-11.30am in the Community Room.

Flow Yoga

Wednesdays 6.30-7.30pm in the Lounge

Roller Sk8

Saturdays 5.30-7pm in the Stadium (3 sessions per term)

For most classes, you'll need to enrol by paying in advance at the Library's Enquiries desk. Enrolments are open from **Wednesday 24 June**.

To find out more, call me on 347 2882 or email: david.pryor@selwyn.govt.nz



HORORATA & KIRWEE RECREATION RESERVES

Submissions Invited on Draft Management Plans

You are invited to send us your views on the just-released draft management plans for Hororata and Kirwee Recreation Reserves.

You can see the reports, at any of our service centres (Lincoln, Leeston, Rolleston and Darfield), and also on our website, www.selwyn.govt.nz

Please get your feedback to us in writing by

Saturday, 15 August and remember to say whether or not you wish to speak at a hearing about the points made in your submission.

Please address your submissions to **Derek Hayes**, Selwyn District Council, PO Box 90, Rolleston 7643. Email: derek.hayes@selwyn.govt.nz



Text "Drive Safe" to 244

Innovative new way to get the Winter Driving Message out

Winter driving is dangerous, but it doesn't have to be. By preparing your vehicle well and adjusting your driving to the conditions, you can make your winter journey safe, whatever the weather.



Key tip: Stopping distances are nearly double on wet roads!

Therefore, you should:

- Slow down and keep a generous following distance between you and the car in front.
- Make your two-second rule a four-second rule.
- Be extra vigilant – take corners slowly.

You can help us spread the "drive safe" message this winter by entering our first ever Winter "Drive Safe" cellphone text competition and go into the draw to win 2 nights at the Burn B&B and two 3-day passes to 09 CHILL.

Other things you can do:

- Tune into the hottest new station on your dial, Alpha FM 96.1, for some quirky drive safe tips and advice
- Look out for the Alpha FM Chill Guys and Gals who will be giving away free road safety stuff at selected locations.
- Watch your speed and braking distances. To see what a difference 10 kph makes, check out our video at www.selwyn.govt.nz under WHAT'S NEW
- Above all, lead by example – drive safe and drive to the conditions!



ELDER ABUSE AWARENESS WEEK

Mon-Fri, 15-20 June

Throughout New Zealand, Elder Abuse and Neglect Prevention Services are taking part in World Elder Abuse Awareness activities in the week of 15 to 20 June. These range from workshops and seminars to awareness raising promotions, displays, and media activity.

It is a global problem. International research estimates that between 3% and 10% of the older population experience some form of abuse or neglect.

However, much abuse goes unreported. It has been estimated that only 16 per cent of all abuse incidents reach service agencies.

These referrals represent only the 'tip of the iceberg'.

Age Concern sees abuse as stemming from a lack of respect for older persons and is running a campaign titled Respect Each Other, which encourages abused elders to seek help at 0800 803 344 and abusers to seek help at 0800 456 450.

For more information on World Elder Abuse Awareness Day, local activities and contacts, see www.ageconcern.org.nz



ROLLESTON – FUTURE OF OUR TOWN

Drop-in Sessions

Rolleston Community Centre, Rolleston Drive

Sunday 28 June 2.00pm till 4.00pm

Monday 29 June 6.30pm till 10.00pm

Thursday 2 July 7.30pm till 9.30pm

If you have made Rolleston home, you will have noticed that the town is growing rapidly. From small beginnings just ten years ago, the population has jumped to around 7,000 today. This could continue with a potential

population of over 20,000 by 2041 and who knows how many beyond that!

What sort of town it grows into depends very much on decisions made now. That's why, after consulting with residents, landowners and developers, we have drawn up a Draft Structure Plan showing what the town could become and how to get it there.

Planner, **Cameron Wood**, describes it as "an aspirational plan that identifies major changes to the look and feel of Rolleston."

These changes include a refashioned Town Centre, a range of new housing types to cater for a wider range of lifestyles and age groups, and a massive new Recreational Precinct and Regional Park – our very own Botanic Gardens.

It's a mighty vision and we think it's doable. Now we'd like your views on it. So come in for a chat, see what we are proposing, and tell us what you think!

You can pick up a copy of the plan while you're at it. The plan is also available at our Rolleston office, the Rolleston library and our website www.selwyn.govt.nz

Contact: **Cameron Wood**, Strategic Policy Planner, on 347 2811 or 318 8338.



Could this be tomorrow's Rolleston?

VOLUNTEER WEEK

Mon-Thu, 15-20 June

This is also a week for raising awareness about the good things that people do. Surveys indicate that 35-45% of the population contribute voluntary time to an organisation or group which helps others in some way – ranging from emergency and rescue activities, care, welfare and support organisations, to educational, hobby and sports groups.

One of these, the **Lincoln & Districts Community Care Association**, has asked us to convey its thanks to the many volunteers who support it and have made it such a success over the last 30 years.

This sentiment is echoed by Mayor **Kelvin Coe**. On behalf of the Council, he thanks everyone in our district who devotes unpaid time to helping or supporting others, whatever form this takes.

"Volunteers really are the lifeblood of our communities, especially in rural areas and small towns," he said. "So much is done by them, which would otherwise not get done. We are greatly indebted to them and I encourage others in our communities to join them. The rewards may not be financial, but in many ways they are more satisfying."



Just as with your car registration, it is your responsibility to ensure that your dog is registered. The penalties for non-registration can be expensive. All dogs older than 3 months must be registered every year (July-June) as per the Dog Control Act 1996.

For dogs who are already registered, owners will

be sent a Re-Registration Notice ON OR AFTER July 1st, but not before.

Registration Fee
(Inclusive of GST)

The 2009-10 fee is payable from July 1st on. You can pay it at any of our offices or libraries in Rolleston, Darfield, Lincoln or Leeston. Or you may use the prepaid return envelope that comes with your dog's registration form. **Payment via internet or telebanking is not an option.** If paid by 31 July 2009, the registration fee is:

- \$30 for the first dog
- \$20 for each additional



with Glen Walker, Libraries Manager

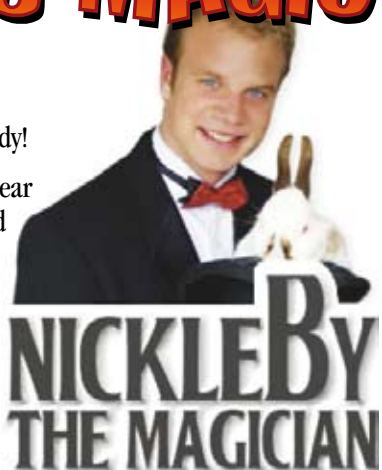
READING IS MAGIC

22 June – 24 July

Our Winter Warmers Reading Programme (Read books, get prizes) is nearly full already!

The star performer at the finale party this year is the **magical, mysterious** and talented **NICKLEBY THE MAGICIAN** who will astound you with his tricks. Don't miss out on this show!

Register now at your local Selwyn Library for **READING IS MAGIC** and sign up for five weeks of **reading is magic fun!**



DOG REGISTRATION STARTS IN JULY!

dog owned by the same person and living at the same place.

Payment after 31 July 2009 will cost:

- \$45 for the first dog
- \$30 for each additional dog owned by the same person and living at the same place.

Change of Address

If you have changed address since last year's registration, please contact us with your new details.

Tag and Collar Fees
(Inclusive of GST)

The fee for a replacement dog tag is \$5 and for a dog

collar \$6-\$8, depending on the size.

Seizure Fee
(Inclusive of GST)

If the Council's Animal Control Officers seize a wandering dog they may charge the owner a seizure fee of \$45 on the return of the dog.

Impoundment Fees
(Inclusive of GST)

If the Council's Animal Control Officers impound your dog, you will have to pay:

- \$45 for the first impoundment
- \$67.50 for the second
- \$135 for the third.

You will also be charged:

- an administration fee of \$11.25 per impounding
- a sustenance fee of \$32.50 per dog per day or part thereof
- officer's travel time \$50 (flat fee)
- (where applicable) a destruction fee of \$11.25

(These fees and charges are set under Sections 37, 38 and 68 of the Dog Control Act 1996.)

