



Members of the Darfield Rural Fire Force are ready to fight fires this summer, after completing essential training.

The 18 new recruits completed core firefighting training late last year. This tested them on the theory and practical elements of the fundamentals of firefighting. This included dry and wet firefighting techniques, basic use of equipment and how to stay safe while fighting vegetation fires. The firefighters now have three unit standards which all firefighters must obtain. Four new volunteers for the Lake Coleridge Rural Fire Force also completed unit standards, as well as three from West Melton Fire Force, and five from the Council's Emergency Response Team.

Leading up to the training, Selwyn District Council Rural Fire Officers ran weekly sessions to familiarise the volunteers with firefighting equipment and how to use different kinds of pumps.

Selwyn District Council Emergency Management team members Carrie Lakin, Al Hutt and Fire Force Commander Mark Strowger took the introductory sessions.

"We are really lucky to have a group of such passionate and dedicated people. They all have different skills they can add to the team and it's great to see they are so keen to support their communities," says Ms Lakin.

The Darfield Rural Fire Force will work together with the HEB fire force to provide a boosted firefighting capability this summer. The volunteers will continued to be mentored and work with experienced firefighters, and train each week.

Fire restrictions changed

A prohibited fire season (total fire ban) was in place across the district, but after recent rain the fire status was altered last week to move to a restricted fire season in the rural areas of Selwyn.

In a restricted fire season, only gas barbeques, crop residue and rubbish fires inside contained drums, and fires which have received a written permit from the Council are allowed in rural areas of Selwyn. Vegetation fires to burn trees or other items are not allowed unless permitted. There are a number of conditions which must be met before fires can be lit – these are available online at www.selwyn.govt.nz/fire. Fire permits will only be issued where there is an urgent need. With the changes in fire restrictions, crop fires will be common in Selwyn. If you see a crop fire, please check if it's supervised before calling 111, to avoid unnecessary callouts of local volunteer fire brigades.

In residential areas the only type of fire permitted throughout the year is a gas barbeque. Other fires need a resource consent from Environment Canterbury. Any fires that are not either permitted or allowed under the restrictions will incur a fine of \$1,150. Fires also can't be lit on Council reserves.

Get active in 2016

Term One classes start in February at Lincoln Event Centre and Rolleston Community Centre.

The centres have a great range of classes to help you keep fit, learn new skills and meet friends.

New classes starting at Lincoln Event Centre include learn to dance like the stars – a social dance class for beginners covering ballroom, latin and rock and roll, Boot Camp Army style – a cardiovascular and muscle training class with Burnham Army instructors and Box-HIIT which incorporates boxing drills, spinning and circuit training. Preschoolers can also enjoy tumble tots on mini gym equipment.

At Rolleston Community Centre, new classes cover Box HIIT, Day HIIT – a lunchtime class to boost mood and energy levels, and for kids sessions on how to learn to play basketball. Netball conditioning sessions also start from 13 February, in preparation for winter.

A wide range of other classes are also offered – for timetables and information on prices visit www.rollestoncommunitycentre.co.nz, www.lincolneventcentre.co.nz or visit the centres.



Keeping track of water use with your water meter

Meters are used to encourage water conservation and to link costs to actual use. The Rolleston, Branthwaite Drive, Edendale and Raven Drive water supplies are fully metered. Households pay a reduced rate of \$200 per year, plus a charge of 40 cents per cubic metre of water. A household with typical water use in these areas will pay about \$350 a year, the same as other Selwyn areas.

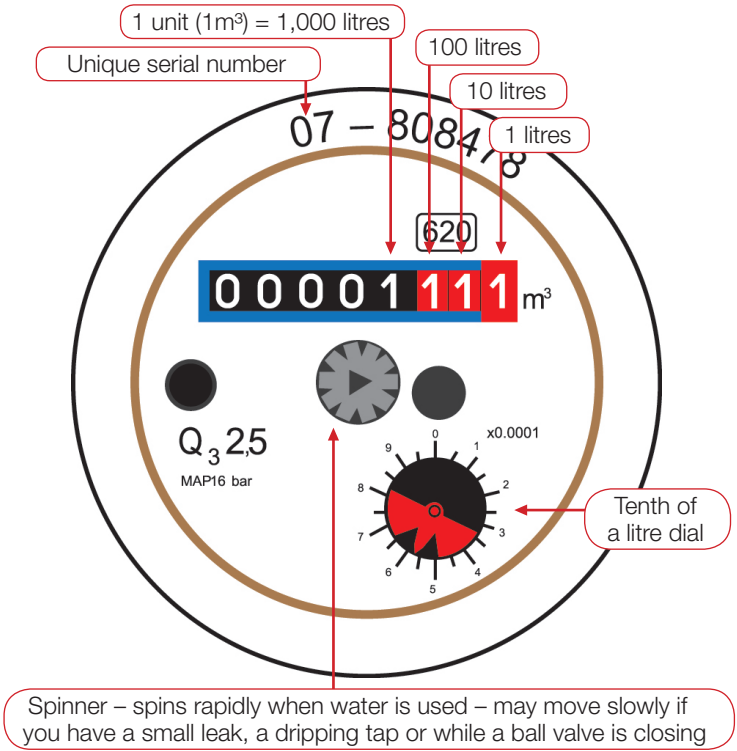
If you live in another area in Selwyn and are connected to a Council water supply and have a water meter installed, you will pay a base water rate of \$350 per year, plus 40 cents per cubic metre for any water used above 375 cubic metres per year. Most newer homes have water meters installed but many older properties do not. If no water meter is installed you will pay only the base water rate of \$350 per year and won't be charged for additional water. If you are not serviced by a Council water supply you won't pay water charges.

How to read your water meter

Your water meter is in a blue box inset into the ground, usually located near the roadside at the front of your property. The box has a small hole at one side where you can insert a screwdriver to flip it open. Inside the box your water meter may have a lid which can be opened to show the dial.

On the water meter the black numbers show the number of complete water units that have been used. 1 unit = 1 cubic metre of water (or 1000 litres of water, around 100 buckets). Red numbers show smaller units (see diagram).

We recommend you check your water meter regularly, especially in summer and autumn when households use the most water for lawns and gardens, so you can manage your water costs (see water cost information by area above). For advice on managing your water use visit www.selwyn.govt.nz/conservewater.



On the roads this week

Seal repairs are planned to Alpine View, West Melton, Weedons Ross and Old West Coast (between McKays and Calders Roads), with stop and go signs being used by contractors to control traffic. This week resealing work is planned along Robinsons, Adams, Wylies and Bellam Roads. Stop and go signs will be used for traffic control. Road works are also planned on Struie Road, with traffic controls operating. Footpath repairs will occur beside Birchs and Springs Roads.

Maintenance grading work is planned around the High Country, Glenroy, Rakaia, Southbridge, Burnham and Darfield areas, with roads remaining open.

Where work is not completed this week, work will continue next week.

The installation of a new sewer line along Railway Road between Jones and Kerrs Roads has been completed and the road is now open again. From 9 February until 11 March, Jones Road will be closed between Weedons Ross and Hoskyns Road to allow the installation of a rail siding for Lyttleton Port Company (I PORT), with a detour operating via Weedons Ross, Maddisons and Hoskyns Road.

Council Call

Selwyn District Council
Norman Kirk Drive Rolleston
Ph 347 2800 or 318 8338

Rolleston Library
Rolleston Drive, Rolleston
Ph 347 2880 or 318 8338

Darfield Library & Service Centre
1 South Terrace, Darfield
Ph 318 8338 or 347 2800

Notices

ALCOHOL LICENCE APPLICATIONS

The following on licence renewal applications are open for submissions until 9 February: Jam (2008) Limited, Lincoln Hospitality Limited, The Hororata Village Bar and Café, Wilderness Lodge Arthur's Pass and Monkey Spices Ltd. The following club licence renewal applications are open for submissions until 9 February: Leeston Rugby Football Club and Ellesmere Golf Club. An off licence application has also been received from Joanne Camille Brackmann – submissions close on 9 February. All notices are online at www.selwyn.govt.nz/alcoholnotices.

DOG MICROCHIPPING

If your dog was first registered after 30 June 2006 and is not a working dog, the law requires them to be microchipped. This free monthly service is available on **Friday 5 February** at:

- Leeston – 9-9.30am
- Darfield – 10.15-10.45am
- Rolleston - 11.30am-12pm
- Lincoln – 12.45-1.15pm

Please note:

- All clinics last for half an hour.
- The Rolleston venue is in Norman Kirk Drive (off Rolleston Drive), other locations are outside libraries.
- Microchipping will not take place if wet.

If you have any questions, please contact Tracey on 347 2800 or 318 8338.

NATIVE PLANTING APPLICATIONS INVITED

Te Ara Kakariki - Canterbury Greenway Trust is looking for more applications from owners wishing to establish native plant greendots this year. With the Selwyn Natural Environment

Fund, the Trust and volunteers are able to support a number of landowners in the Selwyn district. Please contact Te Ara Kakariki soon at office@kakariki.org.nz for further information or see www.kakariki.org.nz.

MOBILE LIBRARY TIMETABLE

Wednesday 27 January
Rakaia Huts 9.10-9.30am
Southbridge Hall 10-10.30am

Thursday 28 January
Prebbleton Tavern 4-6pm

Monday 1 February
Upper Selwyn Huts 10-10.45am
Lincoln University Learning Centre 11-11.30am
Prebbleton Child Care 1.15-1.30pm

Tuesday 2 February
Burnham Kindy 9.40-10.10am
Burnham PreSchool 10.15-10.45pm
Dunsandel School 11.20-12.10pm
Dunsandel Childcare 12.20-12.40pm
Paradise for Little Angels, Rolleston 1.30-2pm

LOCAL FUNDING GRANTS

Funding grants are available from the Malvern and Selwyn Central Community Boards, and from the Ellesmere and Springs discretionary ward funds. The grants normally range from \$400 to \$1200. Community Boards meet once a month to consider applications – Selwyn Central on the third Wednesday and Malvern on the fourth Monday of the month. The Springs and Ellesmere Discretionary Fund Committee meet each fortnight at regular Council meetings. The funding can support individuals, teams and organisations whose projects contribute to strengthening community wellbeing in Selwyn.

To be eligible for a grant,

applications need to meet these criteria:

- organisations are based in, or working for, Selwyn district, providing community, social, recreation, sporting or arts projects or activities in the district.
- personal growth and development for individuals who are contributing to community wellbeing in Selwyn such as leadership training, professional development or educational opportunities that are not part of school curricula
- representation at events – individuals and teams, for example, representing school, team or community at a local, regional, national or international event
- seed funding for special events or projects such as equipment, promotion, venue hire, or setting up a new team
- capacity building and development for Selwyn based community organisations such as leadership training or small equipment purchases.

Local funding is complementary to other funding sources. Priority is given to organisations or individuals who have sought other sources of funding or completed some fundraising towards their projects.

For further information on additional funding criteria and an application form visit www.selwyn.govt.nz/services/funding. Applications must be lodged in time to be considered at regular meetings or will be considered the following month. For more information contact the Council Secretary on 347 2800.

RUBBISH COLLECTION 8 FEBRUARY

Rubbish, recycling and organics collections will occur as normal on **Monday 8 February** (Waitangi Day holiday).

Meetings

Public Forums: *Council, Community Board and local committee meetings are open to the public. Time is available at the start of meetings for people to speak on matters of concern. Please notify Bernadette Ryan (Council), Kate Anderson (Community Boards) or your local committee at least three days before the meeting.*

Township, Hall and Reserve Committees: *To list or make changes to meeting details, email meeting.changes@selwyn.govt.nz or phone 347 2800 or 318 8338 by 9am Wednesday the week before publication.*

COUNCIL & COMMUNITY BOARDS

Unless stated all meetings are at the Rolleston Council Building.

Selwyn Central Community Board
Wed 27 Jan 4.30pm

Selwyn Waihora Zone Committee
Tue 2 Feb 1pm

Audit & Risk Subcommittee
Wed 3 Feb 3pm

Industrial Park Project Team
Thurs 4 Feb 3pm
Izone Café Meeting Room
Because of commercial sensitivity, the public may be excluded from part of or all of the

meeting. Enquiries to Property and Commercial Manager, Douglas Marshall

Council Meeting
Wed 10 Feb 1pm
Followed by a public Citizenship Ceremony at 6.30pm

LOCAL COMMITTEES & ASSOCIATIONS

Doyleston Community Committee

Wed 10 Feb 7.30pm
Osborne Park Pavilion

Hororata Citizens Committee
Tue 26 Jan 7.30pm, Hororata Hall

Hororata Reserve Management Committee
Wed 3 Feb 7.30pm, Hororata Hall

Kirwee Recreation Reserve Management Committee
Mon 8 Feb 7.30pm
Kirwee Reserve Sports Pavilion

Ladbrooks Community Hall Committee
Fri 12 Feb 7.45pm
Ladbrooks Community Hall

Leeston Community Committee
Mon 1 Feb 7.30pm, Leeston Library Community Room
Prebbleton Community Cottage Committee
Tue 9 Feb 7.30pm
Prebbleton Community Cottage

Prebbleton Public Hall Society Inc.

Mon 8 Feb 7.30pm
Prebbleton Hall Supper Room

Rolleston Residents Association Inc.
Mon 1 Feb 7.30pm
Rolleston Community Centre
Sheffield Memorial Pool
Thurs 28 Jan 7pm
Sheffield School

Springfield Township Committee
Tue 2 Feb 7.30pm, Tawera Hall

Tai Tapu Community Association Inc.
Wed 10 Feb 7.30pm
Tai Tapu Library
Weedons Residents Association Inc.
Tue 9 Feb 7.30pm
Weedons Domain

West Melton Community Centre
Tue 26 Jan 7.30pm
West Melton Community Centre
West Melton Residents Association - AGM
Wed 10 Feb 7pm
West Melton Community Centre
Ordinary meeting to follow
Whitecliffs Township & Domain Committee
Mon 1 Feb 7.30pm
Glentunnel Hall

Selwyn Events

THURSDAY

28
JANUARY

Aestival 2016

83 Gerkins Road Tai Tapu, 4-9pm
Showcasing talented youths & accomplished musicians from across New Zealand, & supported by the Selwyn Youth Council. An all-ages event hosted on the beautiful hills of Tai Tapu. Adults \$15, 5-15's \$5, under 5 free. See aestivalfestival.weebly.com

THURSDAY

28
JANUARY

Leeston Music on the Green

Leeston Park, Holley Street, 6-9pm
Pack a picnic & bring the family to enjoy a summer evening being entertained by local musicians. Free



FRIDAY

29
JANUARY

Lake Crichton triathlon/ duathlon

A community event geared at encouraging first-time athletes to give triathlons & duathlons a go. For entry information & costs visit www.selwynsportstrust.org.nz. Also runs 12 February & 4 March

SUNDAY

31
JANUARY

Springfield School and Community Fun Day

Springfield School, 11am-2pm
Enjoy a pool party, sausage sizzle, bouncy castle, face painting, games, picnic & Pedalmania crazy bikes. An event for the whole Springfield community. Free

SUNDAY

31
JANUARY

Southbridge Pool Party

Southbridge Pool, High Street, 2-4pm
Enjoy games, music, sausage sizzle, prizes & pool inflatables. Free

THURSDAY

4
FEBRUARY

Springston Picnic in the Park

Springston Domain, Ellesmere Junction Road, 5.30-7.30pm
With live music, bouncy castle, Fun on Wheels trailer, games, Pedalmania, prizes & free sausage sizzle. Bring a picnic & enjoy the summer evening. Free

SATURDAY

6
FEBRUARY

Waitangi Day Country Picnic in the Park

Darfield Domain, North Terrace, 10.30am-3.30pm
A celebration of all things country with games, food, music, displays & local produce. Free

MONDAY

8
FEBRUARY

Ellesmere Historical Society Bus Tour, 9am

Join a trip to Barhill to see the historically significant farms of Corwar & Balrazie, with lunch at Barrhill Hall. To book or find out more email rfg@ihug.co.nz or phone 324 3648

For more events in Selwyn visit www.selwyn.govt.nz/events

Leeston Library & Service Centre
High Street, Leeston
Ph 347 2820 or 318 8338

Lincoln Library & Service Centre
Gerald Street, Lincoln
Ph 347 2875 or 318 8338

(03) 347 2800

Darfield call free 318 8338
f www.selwyn.govt.nz

