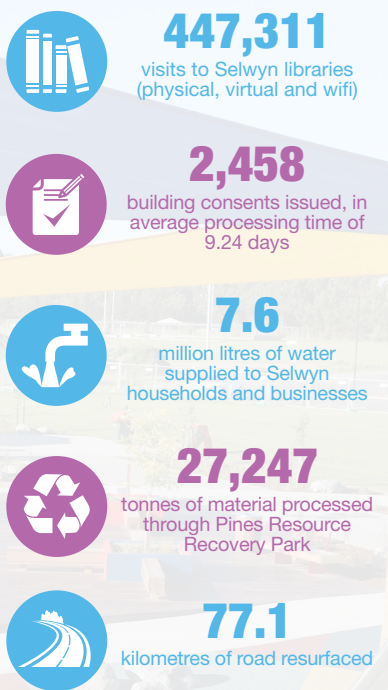


Report shows Selwyn set for strong future



Economic confidence, continuing growth and community development are key themes in the Council's latest Annual Report, just released.

The 2017/18 report notes that with a population estimated at over 60,000 Selwyn is now the third-largest territorial authority in the South Island – and our economy is growing at double the national average.

Mayor Sam Broughton says the Council is continuing to play a central role in providing the essential services, infrastructure and facilities to support a growing community.

"We're pleased to be contributing to Selwyn's success," he says. "Our results for the year outline the investment we are making to support our communities and make sure we are well placed to accommodate the growth that we expect will continue for some time."

During 2017/18 the Council achieved 88% of its performance targets for the year – a 2% increase on the previous year.

Building activity has remained strong with 2,458 building consents issued during the year, reflecting the ongoing development of new residential subdivisions.

Major new community facilities this year included the opening of the Dunsandel and Tai Tapu Community Centres, with West Melton opening shortly, while earthquake strengthening was completed at Ladbrooks and Springston halls. Progress was made on the planned Rolleston town centre with initial concept designs released.

Work continued to develop Foster Park as an important sport and recreation hub, including the completion of a new playground and additional sports fields, and extending the footpath network.

Major roading projects included intersection upgrades at two busy Rolleston locations, Masefield Drive/Rolleston Drive and Jones Road/Hoskyns Road. Both projects included installation of traffic lights, footpaths and other infrastructure.

Across the district, this year the Council completed resealing on 77.1 kilometres of roads, repaired 5,273 potholes and maintained over 1,000 kilometres of unsealed roads.

A major upgrade to the Pines Wastewater Treatment Plant included a new bio-reactor and upgrades to the sludge solar drying hall and UV treatment system.

New community initiatives launched this year included the Show Me Selwyn bus tours and Everything Selwyn website, both aimed at supporting newcomers to the district. The Council also delivered an expanded Summer in Selwyn event programme, and helped celebrate our growing diversity through events like CultureFest.

Overall the Council's financial position remains sound. Expenditure for the year was \$100.6 million compared with budget of \$99 million. Revenue for the year was \$146 million compared with budget of \$128.6 million. Population and housing growth resulted in higher than anticipated revenue from both rates and development contributions, while increased vested assets reflected the high level of subdivision activity.

Development contributions are retained for future infrastructure provision and cannot be used to reduce rates, while vested assets are a non-cash item and are also not available to reduce rates.

Feedback sought on Parks and Reserves Bylaw

The Council is proposing changes to its current Parks and Reserves Bylaw 2009 and we want your feedback.

The proposed changes take into account the evolving behaviours and use of parks and reserves since it was last reviewed in 2009. We've made minor changes to the layout and formatting of the bylaw, and addressed new issues that have arisen since the last review.

The changes also reflect the growth of urban areas, increased number of tourists choosing camping as preferred accommodation, changes to the district's social fabric, habits, recreation trends and use of technology such as drones.

It's important to have your say, as open space forms an integral part of the district's aesthetic, social, ecological, cultural and economic life. We have more than 1200 hectares of parks and reserves in the Selwyn district.

Public consultation on changes to the Parks and Reserves Bylaw 2009 closes on 20 November 2018 at 5pm. For more information visit www.yoursay.selwyn.govt.nz.

Back to school road safety

Over 9,500 Selwyn children are heading back to school this week so it's important that drivers take extra care when travelling through our townships.

Many of these young people will be getting off and on school buses, in and out of cars and walking, biking and scooting to and from school.

School Road Safety Coordinator Stephanie Hautler says we need to make sure our children are reminded of road safety skills.

"Road safety starts at home but children can be a bit rusty after a few weeks off so keep a close eye out for them," she says.

"It's the right time to refresh your kids on the kerb drill, to watch out for sneaky driveways and to check they are wearing their helmets and hi viz".

If your children walk or bike to school independently take them on practice bike rides or walks to school while the roads are quiet.

"Find a safe route that minimises the amount of road crossing they have to do, the shortest route may not always be the safest," Ms Hautler says.

The kerb drill:

1. Stop one step back from the kerb.
2. Look and listen for traffic coming from all directions.
3. If there is traffic coming, wait until it has passed and then look and listen for traffic again.
4. If there is no traffic coming, walk quickly straight across the road.
5. While crossing, look and listen for traffic, wherever it may come from.

Plenty of opportunities from Sister Cities expedition

Mayor Sam Broughton has identified a number of parallels between Selwyn and our sister cities, during his recent trip to China and Japan.

Mayor Broughton, Deputy Mayor Malcolm Lyall and Councillor Bob Mugford and Malvern Community Board member Karen Meares took part in the 20-day trip to China and Japan.

The trip was part of the Sister Cities Programme, aiming to promote cultural understanding, co-operation and economic development.

Mayor Broughton says while in the Gansu Province, the delegation saw a number of industries local Selwyn businesses could potentially form relationships with.

"What we saw in Gansu Province was an area that farmed grain and lamb, as well as producing wine.

"It was fascinating to see so many parallels between some of our key export earners and what one of our sister cities produces," Mayor Broughton says.

With the identification of potential links Mayor Broughton will now be investigating how to take advantage of the similarities, and look for ways that local businesses can develop relationships with firms in Gansu.

Mayor Broughton and the rest of the delegation were amazed at the hospitality offered to them during their trip to China and Japan, and will be looking to reciprocate when hosting trips in the future.



Council services on Labour Day

Council offices, Libraries and Service Centres, Rolleston Community Centre and Lincoln Event Centre will be closed on Labour Day, Monday 22 October. Rubbish and recycling collection will occur as normal. Selwyn Aquatic Centre is open from 8am–8pm. Pines Resource Recovery Park is open from 10am–4pm.

Council Call

Selwyn District Council
Norman Kirk Drive, Rolleston
Ph 347 2800 or 318 8338

Rolleston Library
Rolleston Drive, Rolleston
Ph 347 2880

Darfield Library & Service Centre
1 South Terrace, Darfield
Ph 318 8338 or 347 2780

Notices

COMMUNITY FUND APPLICATIONS

Applications for the first round of funding from the Selwyn Community Fund close at the end of the month. The fund is open to any organisations whose principle functions or activities are of a charitable (not-for-profit) nature. Full details on eligibility and criteria, along with the online application form are at www.selwyn.govt.nz/selwyncommunityfund

ALCOHOL NOTICES

Southbridge Rugby Football Club Incorporated has applied to renew its club licence. Objections are open until 26 October. For more information

head to www.selwyn.govt.nz/alcoholnotices

MOBILE LIBRARY TIMETABLE

Wednesday 17 October
Rakaia Huts 9.30–10am
Southbridge School 10.45am–12pm
Abbeyfield, Leeston 2.30–3.00pm
Thursday 18 October
Annabel's West Melton 1.00–1.30pm
Lincoln University Early Childhood Centre 2.00–2.30pm
Prebbleton Township/Tavern 3.30–5.30pm
Tuesday 23 October
Glenroy Hall 11.40–12.10pm

Windwhistle School 1–1.30pm
Glentunnel School 1.55–2.55pm
Glentunnel Hall 3–3.30 pm

NOTICE OF MEETING

Selwyn District Council Sister Cities Committee
Tuesday 13 November 2018 at 6pm, Rolleston.
Selwyn District has Sister Cities cultural and friendship relationships and exchange visits with our Sister Cities in Japan; China; Coventry in Rhode Island, USA; and Toraja, Indonesia;
Anyone welcome to attend. RSVP to Bernadette Ryan 3472 830 or bernadette.ryan@selwyn.govt.nz for catering purposes.

Meetings

Public Forums: *Council, Community Board and local committee meetings are open to the public. Time is available at the start of meetings for people to speak on matters of concern. Please notify Bernadette Ryan or your local committee at least three days before the meeting.*
Township, Hall and Reserve Committees: *To list or make changes to meeting details, email meeting.changes@selwyn.govt.nz or phone 347 2800 or 318 8338 by 9am Wednesday the week before publication.*

COUNCIL & COMMUNITY BOARD

Unless otherwise stated all of these meetings will be held at the Rolleston Council Building.
Road Safety Subcommittee
Wed 17 Oct 10am
Malvern Community Board
Tue 23 Oct 4.30pm
Kirwee Hall
Selwyn Waihora Zone Committee
Tue 6 Nov 1pm
Lincoln Event Centre
Property Committee
Wed 7 Nov 9am
Audit and Risk Subcommittee
Wed 7 Nov 10.15am
Council meeting
Wed 7 Nov 1pm

LOCAL COMMITTEES & ASSOCIATIONS

Coalgate Township Committee
Tue 23 Oct 7.30pm
Coalgate Fire Station
Coalgate/Glentunnel Reserve Management Committee
Tue 6 Nov 7.30pm
Coalgate Fire Station
Darfield Recreation and Community Centre Management Committee
Mon 5 Nov 7.30pm
Darfield Rec and Community Centre
Darfield Township Committee
Thur 18 Oct 7.30pm
Darfield Library/Service Centre
Doyleston Community Committee
Wed 7 Nov 7.30pm
Osborne Park Hall
Glenroy Community Hall Committee
Tue 16 Oct 7.30pm
Glenroy Community Hall
Glentunnel Township Committee
Mon 29 Oct 7.30pm
Glentunnel Community Centre
Ladbrooks Community Hall Committee
Fri 26 Oct 7.30pm
Ladbrooks Hall
(note change of date)

Leeston Community Committee
Mon 5 Nov 7.30pm
Leeston Library Community Room
Leeston Park Committee
Mon 29 Oct 8pm
Leeston Park Pavilion
Rolleston Community Centre Management Committee
Thur 25 Oct 7pm
Rolleston Community Centre
Rolleston Residents Association
Mon 28 Oct 7pm
Rolleston Community Centre
Sheffield/Waddington Community Committee
Thur 18 Oct 7.30pm
Sheffield Hall
Springston Hall Committee
Fri 9 Nov 7.30pm
Springston Hall
(additional meeting)
Springston Reserve Committee
Wed 17 Oct 7.30pm
Errol Tweedy Pavilion, Springston Reserve
Tawera Memorial Hall Committee
Wed 7 Nov 7.30pm
Tawera Hall
Waihora Park Reserve Committee – AGM
Tue 6 Nov 7.30pm
Waihora Bowling Club



On the roads this week

Pre-seal repair work will be undertaken on Lincoln Tai Tapu Road, Ellesmere Road, Leadleys Road and Blakes Road. Reconstruction will continue on Waimakariri Gorge Road between Waddington Road and Minchins Road. Resealing will be completed along The Lake Road and Hudsons Road. Curve Road, Cossars Road, Lincoln Tai Tapu Road and Ellesmere Road will have patch sealing take place.

Maintenance grading is to take place in the Hororata, Dunsandel and Motukarara areas. The shoulder on West Belt, Lincoln is being formed and sealed.

What do YOUTH think? survey

The Selwyn Youth Council wants to hear what young people think about living, learning, working and playing in Selwyn.
Each year Selwyn District Council conducts a residents' survey to better understand the needs of the Selwyn community.

Starting this year, the Youth Council have decided to conduct their own annual youth survey to help focus their efforts to better support the district's youth.

The survey is open until Wednesday 31 October for any young person living in Selwyn between the ages of 13–24.

Complete the survey by Wednesday 24 October and you'll be in the draw for an early bird \$50 Prezzy Card prize. Go to the Selwyn Youth Council's Facebook page for more information and a link to the survey.



MONDAY

22

OCTOBER

Homebush Stables and Gardens

2142 Homebush Road, 10am–4pm

This historic place will be open to the public free of charge to celebrate 25 years of operating and restoring the stables complex and gardens. Buildings, museum, gardens and cafe all open. Bring a picnic or enjoy country feasts and delicious food in the Swingletree Cafe. There will be plenty to see and do including a teddy bears picnic and children's games. Signposted from Darfield.

WEDNESDAY

31

OCTOBER

Halloween Disco

Lincoln Event Centre, 4.30–6pm

Lincoln Event Centre's Halloween Disco is back for 2018! Come dressed to dance in your favourite Halloween costume for an afternoon full of fun and activities. For pre-schoolers and children aged up to eight years. Just \$3 per child or \$5 per family, tickets available from the Lincoln Event Centre reception or door sales on the day.

SATURDAY

3

NOVEMBER

Rolleston Fireworks

Foster Park, 5pm

The iconic event is back again, brought to you by an incredible group of local volunteers. As well as a wonderful fireworks display, there will be plenty of delicious food options, fairground rides and entertainment including on stage performances. Access by way of donation, \$5 per adult and \$2 per child (5 to 12 years). Postponement date of Sunday 4 November.

SATURDAY

24

NOVEMBER

The Courtenay A&P Show

Kirwee Showgrounds, from 8am

Featuring fun and friendly competition, a great day out where town and country meet. The Courtenay A&P Show is a held on the Saturday after Show Weekend. For more information head to www.courtenayshow.org.nz.

For information on listing a community event visit www.selwyn.govt.nz/councilcall

Leeston Library & Service Centre
19 Messines Street, Leeston
Ph 347 2871

Lincoln Library & Service Centre
Gerald Street, Lincoln
Ph 347 2876

(03) 347 2800
Darfield call free 318 8338
www.selwyn.govt.nz
f SelwynDistrictCouncil

