

Challenge and inspiration at Arts Festival

William Sutton, Plantation Series XVIII, 1988. Reproduced courtesy of Christchurch Art Gallery Te Puna O Waiwhe

Feathered friends, bugs, fashion and a public peek at a huge collection of Kiwi art are all aiming to inspire and challenge people in the second annual Selwyn Arts Festival.

Following a successful festival last year, the Council has once again partnered with three Selwyn art galleries, Te Huanui in Darfield, Lakeland Gallery in Leeston and Down by the Liffey Gallery in Lincoln to put on the festival celebrating art in Selwyn.

The year's festival will feature 13 tours, events and workshops across Selwyn from 14–22 November.

The week aims to stimulate people's understanding of the arts, with the hands-on sessions covering everything from chalk painting to block printing and enamelling.

It will also include three public tours of Lincoln University's collection of over 280 pieces by Kiwi artists, run by the collections curator Fiona Simpson.

Arts festival organiser and Council Work Readiness and Enterprise Coordinator Trudi Fraser says the university already runs tours for community groups and was excited by the opportunity to make its collection more accessible to the community.

"A lot of people don't know that they have a big collection of New Zealand art, so it was a good opportunity to open it up to the public."

Other events range from spoon carving to 'create a critter' illustration workshops and a 'feathered friends' themed exhibition of art at Te Huanui Art Gallery in Darfield.

The week will also cover fashion with a glass jewellery workshop, while artist Emily Dot is offering to turn people's sneakers into fashion statements by collecting and painting them for \$10 a pair. People are welcome to drop in their clean canvas or leather sneakers from 10–11am on Saturday 14 November and Emily will paint them ready for collection later in the week.

For more information on the Selwyn Arts Festival visit selwyn.govt.nz/artsfestival or pick up a brochure from one our libraries and service centres.

Kirwee Players supporting roles for rangatahi

Over the past few months, the junior members of Kirwee Players have been rehearsing lines for their performance of The Lion King Jr, which premiered last Friday.

Behind the scenes, the Council's Creative Communities Selwyn Fund helped provide the show's creative team, from hiring musical directors and choreographers, to costumes, scripts and scores.

The fund is available to groups or individuals with community-based creative projects that promote arts or culture in Selwyn.

Kirwee Players Grant Application Assistant Linda Gosling says any grant Kirwee Players gets is vital to the survival of this small community theatre group.

"Creative Communities has been great in the fact that sometimes the difference between getting a community grant and not, can mean the difference between actually putting on a show, or not putting on a show."

The theatre group has been performing shows since 1977 and in 2015, they introduced children's shows, which Linda says plays a key role in its future.

"It is really important. Kirwee Players might be 43 years old, but the reality is most of us on the committee are well over 40, so we need to get younger people involved. We don't just need people on the stage, we also need people behind stage, so it's at all levels.

"Doing junior shows, not only opens it up to the youth of Selwyn, but it also enables these younger directors, musical directors and choreographers to be in the show's creative team and stage management. The funding we get from the Council's Creative Communities Fund helps support these opportunities for our youth."

For more information on Kirwee Players visit kirweeplayers.org.nz or facebook.com/kirweeplayers.

The Creative Communities Selwyn Fund is open for applications until 5pm, Friday 27 November. Visit selwyn.govt.nz/artsfunding for more information and to apply.



Photo credit: Erin Grigson

Further infrastructure upgrades coming for Leeston and Doyleston

Three projects to improve flood protection and wastewater infrastructure around Leeston and Doyleston should be completed by Christmas.

The projects include upgrades to culverts and pipes along Leeston Road and will be coordinated to minimise disruption along the road.

Work on the Leeston stormwater bypass project is ahead of schedule and the closure of Leeston Road at the intersection with Station Street has been brought forward, with a detour in place using Station Street and Cunningham Street.

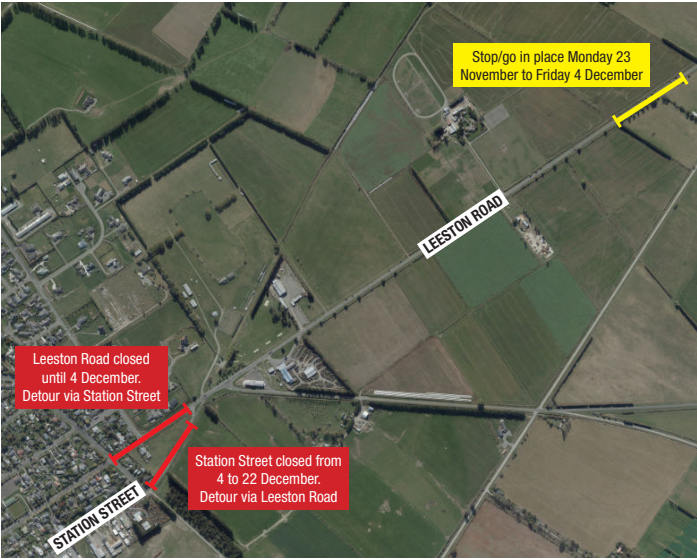
The works are part of a long-term project to upgrade the stormwater network and reduce the risk of flooding in Leeston. Final works on Station Street will be completed from 4–22 December, to coordinate with the other work on Leeston Road.

Flood protection work for Doyleston will also be happening from Monday 23 November to upgrade the culvert under Leeston Road near Drain Road. This work will enlarge the culvert and reduce the risk of flooding in Doyleston. A stop/go system will be in place on Leeston Road around this site for two weeks from Monday 23 November to Friday 4 December.

Taking advantage of the works already in place, a team is planning to replace the wastewater pipe along Leeston Road between the townships, working from the Doyleston end towards Leeston.

Work on the Doyleston to Leeston wastewater pipe is scheduled to take place from Monday 9 November to Friday 18 December. The work site will move along Leeston Road in 300 metre increments with a low-speed zone in place.

Infrastructure Group Manager Murray Washington says the Council appreciates residents' patience while these upgrades are carried out to improve flooding protection and wastewater infrastructure.



Leeston Doyleston walk and cycle link opening

The new walking and cycleway between Doyleston and Leeston will help bring the townships together when it opens this weekend.

The Leeston Doyleston Way will be officially opened on Saturday 14 November, and members of the public are invited to the opening event starting at 10am at the Leeston Showgrounds entrance.

Chairman of the Leeston Township Committee Lloyd Clausen says the cycle and walk way is a long-awaited project that people are excited to see open.

"There are people using it all the time. It's great for the towns. It's good for the safety of people travelling between the two towns and it opens up another area for people to walk. It makes life easier to get between the two and it ties the towns together a bit more."

The 2.1 kilometre cycle and walk way runs between Drain Road at Doyleston and Manse Road in Leeston and was built by Leeston-based Johnston Excavating and Drainage. It relied on needing additional land from the main adjoining properties to fit the pathway in alongside Leeston Road where there were a number of design challenges to overcome.

Council Transportation Asset Manager Andrew Mazey says the Council is excited to see the cycle and walk way open and adding to the strong network of cycleways across the district.

"We know people in Doyleston and Leeston have been waiting patiently to enjoy this path. As a Council we're keen to support people in walking, cycling and being active and this is another link in our chain of cycleways and walk ways that we are implementing to support that."

Notices

DOG MICROCHIPPING

This free monthly service is available on Friday 20 November at the following places:

- Rolleston Council offices 9–9.30am
- Lincoln Library 10.15–10.45am
- Leeston Library 11.30am–12pm
- Darfield Library 12.45–1.15pm

If your dog was first registered after 30 June 2006 and is not a working dog, the law requires him or her to be microchipped. Please note:

All clinics last for half an hour. The Rolleston venue is in Norman Kirk Drive. All others are libraries.

Microchipping will not take place if wet.

If you have any questions regarding microchipping, please contact Tracey Wheeler on 0800 SELWYN (735 996).

PUBLIC NOTICE – EASEMENT REQUEST KIRWEE RESERVE

The Council has received a request from Orion New

Zealand Ltd (Orion) to grant an easement in the Kirwee Recreation Reserve to install a 100kva power transformer adjacent to the Kirwee Bowling Club and underground cabling across the reserve. Public notice is required in accordance with Section 48 of the Reserves Act 1977.

The works are to increase capacity for the benefit of the reserve. Copies of the plan showing the proposed works are available by request.

The easement runs over Lot 44 DP 173 and Reserve 2416 both held in Gazette Notice 1980 p 2565 and Lot 42–43 DP 16807 held in CB101/173.

Any person objecting or submitting to this proposal can do so in writing no later than 5pm Monday 14 December. To make a submission or objection or to find out more about this proposal please contact the Acquisitions, Disposals and Leasing Department by e-mail to property@selwyn.govt.nz or post to PO BOX 90, Rolleston 7643.

SPORT NEW ZEALAND RURAL TRAVEL FUND

Sport New Zealand Rural Travel Funding is available for Selwyn sport teams who need to travel to local competition games and are comprised of members aged 5–19 years (school competitions in school time are not eligible). This funding round is for summer sports only. For further information and application forms go to selwyn.govt.nz/services/funding/sport-nz-rural-travel-fund or contact Stuart Westoby, 03 347 2708, stuart.westoby@selwyn.govt.nz. Applications for this funding round close Friday 27 November.

ALCOHOL NOTICES

BR & LK Little Limited has applied for the renewal of an off licence and Darfield Rugby Football Club Incorporated has applied for the renewal of a club licence. Objections to these applications are open until Monday 23 November. For more information visit selwyn.govt.nz/alcoholnotices.

Meetings

Public Forums: *Council, Community Board and local committee meetings are open to the public. Time is available at the start of meetings for people to speak on matters of concern. Please notify Therese Davel or Bernadette Ryan if you wish to speak at the Council meeting at least five days before the meeting.* Township, Hall and Reserve Committees: *To list or make changes to meeting details, email meeting.changes@selwyn.govt.nz or phone 347 2800 or 318 8338 by 9am Wednesday the week before publication.*

COUNCIL & COMMUNITY BOARD

Malvern Community Board
Mon 23 November 4pm Darfield Library/Service Centre

Council
Wed 25 November 1pm Council Rolleston Offices*

** Livestreamed on the Council website and YouTube channel*

DISTRICT COMMITTEE MEETINGS

Coalgate Township Committee
Tue 24 November 7.30pm
Coalgate Fire Station

Dunsandel Community Committee

Mon 16 November 7.30pm
Dunsandel Community Centre

Greendale Recreation Reserve Management Committee
Tue 24 November 8pm
Greendale Pavilion

Kirwee Community Committee
Mon 16 November 7.30pm
Kirwee Hall

Leeston Park Association Committee AGM
Mon 30 November 7.30pm
Leeston Park Pavilion

Protecting our district’s heritage

Efforts to protect the history of 12 of the districts’ heritage properties have received a boost through the Council’s Heritage Fund.

Building repairs, maintenance and a project to safely preserve historical artefacts will all be supported, with the fund awarding up to \$39,000 towards the projects.

Keeping the district’s heritage alive is a big undertaking, which the Council supports through funding and through the District Plan, which identifies heritage buildings, structures, sites and trees and sets the rules for their preservation.

Selwyn has experienced several waves of settlement by Māori and Europeans over many decades. As a result there are sites, buildings and structures in our district which are of cultural or historic value to individuals, families, iwi, rūnanga and communities.

It’s important we look after all the things and places that are part of our history and identity, and preserve them for current and future generations to enjoy and learn from.

The Proposed District Plan updates the list of heritage buildings and notable trees as well as identifying and including new rules to recognise and protect sites and areas of significance to Māori. For more about how the Proposed District Plan plans to protect heritage items and how to make a submission visit selwyn.govt.nz/districtplanreview. Submissions are open till 5pm Friday 11 December.



On the Roads

Leeston Road is closed at the intersection with Station Street for work on the Leeston Stormwater Bypass. This closure is due to be in place until 4 December. A detour will be in place along Station Street and Cunningham Street.

Selwyn Events

THURSDAY
12
NOVEMBER

Rangoli Workshop

Rolleston Library, 6.30–7.30pm
Nishi from Heenolly will demonstrate and teach several styles of Rangoli, a vibrant Indian art style using colourful rice, lentils, Rangoli powder and flowers. Nishi will also exhibit patterns using hand-crushed quartz and will have quartz kits and sky lamps for sale. Suitable for teens and adults. Free. Bookings essential at selwynlibraries.co.nz.

THURSDAY
12
NOVEMBER

Sherlock Holmes Murder Mystery

Darfield Library, 7–8pm
Join us for a night of mystery and intrigue at our Sherlock Holmes Murder Mystery night. Use your knowledge of Arthur Conan Doyle’s famous detective novels to follow a series of clues and solve a murder. Recommended for 15+ years. Free. Bookings essential at selwynlibraries.co.nz

SATURDAY
14
NOVEMBER

Poetry for Fun

Lincoln Library, 2–3pm
Local poet Kathleen Scott will give this fun poetry workshop, tailored for adults. All experience levels welcome! If you haven’t done poetry since school - this is the session for you. Free. Bookings essential at selwynlibraries.co.nz.

MONDAY
16
NOVEMBER

Lawyer to Linocutter

Darfield Library, 5–6pm
Darfield artist Soon-Lee Spicer will be sharing her inspirational story and journey as an artist specialising in linocut printmaking.

TUESDAY
17
NOVEMBER

Driver Skills Refresher

West Melton Community and Recreation Centre
Build confidence by refreshing your knowledge of the road rules, with the support of an occupational therapist, as well as a driving instructor and police. Bookings advised as spaces are limited email roadsafety@selwyn.govt.nz or call 03 347 1867.

TUESDAY
17
NOVEMBER

Discovery Time

Leeston Library, 3.30–4.30pm
Discover new knowledge, and get creative through our hands-on play and activity-based learning at this weekly session. No booking required, just drop in. Term time only.

For information on listing a community event visit selwyn.govt.nz/councilcall

Leeston Library & Service Centre
19 Messines Street, Leeston
Ph 347 2871

Lincoln Library & Service Centre
Gerald Street, Lincoln
Ph 347 2876

0800 SELWYN

www.selwyn.govt.nz
SelwynDistrictCouncil

