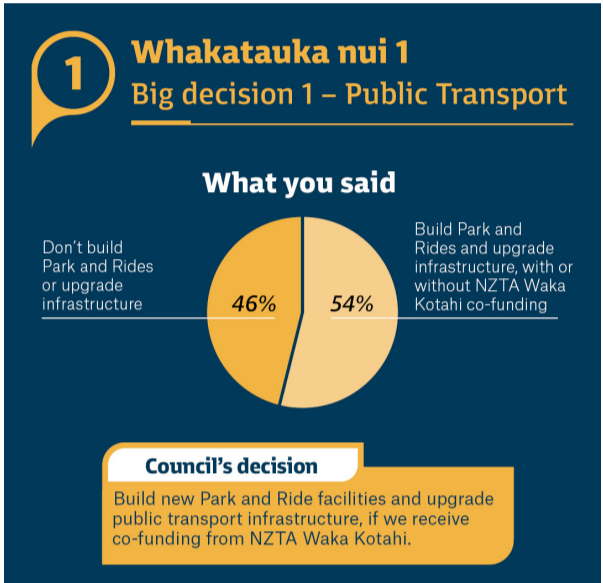


Decisions Confirmed for Long-Term Plan

Councillors have made their decisions on what will be included in the Long-Term Plan, after considering over 1500 submissions and hearing from 131 submitters at public hearings and technical advice.

The full Long-Term Plan including rates figures is being prepared and expected to be adopted on 3 July. Shown below is what the Council decided on our Big Decisions.

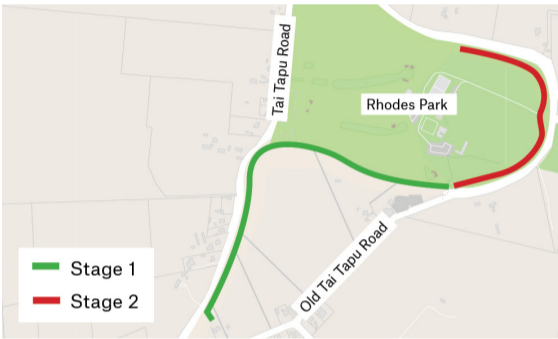


Tai Tapu Walkway Update

The first stage of the walkway from the back of the Tai Tapu Church along the river through to the Rhodes Park footbridge, will be open to the public this Friday 31 May.

The second stage of this walkway, connecting the first stage to Rhodes Park along the Huritini Halswell River is expected to be completed by end of June.

Further works are intended to follow at a later date, including planting out of the walkway.



Major public artwork for Rolleston now in production

Fundraising for *Toro Atua*, a public artwork by Ngāi Tahu artist and Arts Laureate Dr. Areta Wilkinson is now completed and the artwork in production. Set to be the largest public artwork in Rolleston, *Toro Atua* will be installed in the town centre's new reserve, near Te Ara Ātea, the sensory garden, and the youth recreation space. *Toro Atua* will be officially opened at a public celebration on 6 July. Find out more at selwyn.govt.nz/news

Council and Community Board Meetings

Councillor Briefings*

Wednesday 5 June 1pm
Rolleston Council Offices

* Livestreamed on our YouTube channel.

Selwyn Demonstrates Resilience Amidst Economic Challenges

Selwyn's economy shows remarkable resilience in the face of economic headwinds.

The district's economy matched national growth in the year to March 2024, growing 0.2% according to the latest Infometrics figures. Among other medium-sized districts, only the Waikato District experienced faster growth (+1.6%).

Employment of Selwyn residents grew by 6.1% while consumer spending grew by 12.5% compared to the national average of 2.3%, indicating robust

job market dynamics and a resilient local economy.

The slowdown in growth was mainly driven by a pullback in construction activity and challenges within the food and beverage manufacturing sector. Despite these challenges, the region continues to attract new residents, with health enrolment growth soaring by 5.4% in the year to March 2024.

"It's heartening to see that Selwyn continues to be the place people want to call home", said Mayor Sam Broughton.

"I know that many in our community are doing it tough with the economic challenges the whole country is facing, however we have an incredible community that support each other, and these numbers show our continued resilience. These are strengths that position us well to weather the year ahead."

For the full Infometrics Quarterly Economic Report visit selwyn.govt.nz/news

Events

Cupcakes and Yoga (for Caregivers of Teenagers)

Thursdays from 30 May – 19 September

Selwyn Youth Hub,
Rolleston Community Centre.

Bookings required at selwyn.govt.nz/events

Donation

Knitting Circle

Saturday 1 June, 1.30-2.30pm

Te Ara Ātea.

Bookings required at
selwyn.govt.nz/events

FREE

Chair Yoga

7 June – 29 August

Lincoln, Rolleston and Leeston,
various days and times.

Bookings required. Find out more at
selwyn.govt.nz/events

\$10