

Castle Hill

Tell us about your town:

Please share your ideas about how you'd like to see your town or surrounding settlements grow and develop over the next 15 years.

Write your comments in the feedback space – or write or draw your ideas on the map. Write on the back or use extra sheets if you need more space.

You can also give us feedback online at:

www.selwyn.govt.nz/areaplans

Feedback is open until 5pm, **Friday 28 August**.

Some questions to think about:

Growth and development

- Do you think your township should grow? Where should the boundaries be?
- What changes are needed as your township grows: More parking? More medium or high-density housing? More (or less) open space? Recreation options for young people?
- What do you suggest to encourage business growth in your township?
- Are you happy to travel to nearby townships for some services? Which services?
- Where do you think new businesses should go?

Communities and character

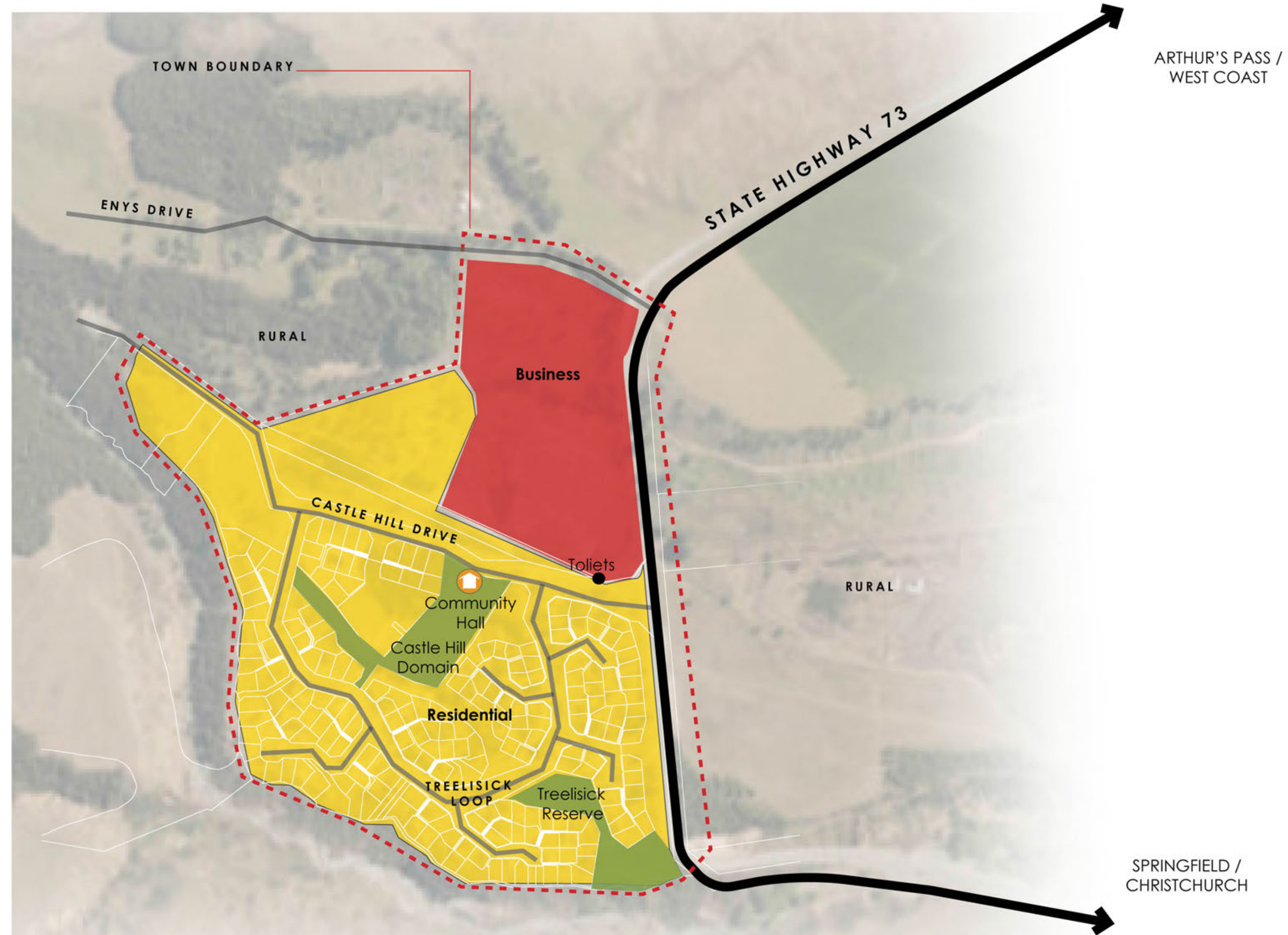
- What do you like about your township and the wider area? What would you change?
- What features make your town special: Wide tree-lined streets? Countryside views? Quiet rural feel? Other things?
- What types of housing may be need in the future as your town grows and the population changes?
- What size sections will be important for your township in the future:
 - small sections for townhouses?
 - medium sized sections for normal 3-4 bedroom houses?
 - larger sections for bigger houses and gardens?
 - lifestyle-sized sections?
- Where should new housing and open space be located?

Transport and infrastructure

- Are there enough transport connections, such as footpaths, cycleways or roads, in your town and between nearby areas?
- What transport changes might be needed in future in your town: Street landscaping, parking, walking, pedestrian or cycling facilities?
- Do you have any comments about other infrastructure, such as water supply and wastewater?
- Are there enough places for community events, reserves, playgrounds in your town?
- What additional community facilities do you think your township needs?
- Where do you think new community facilities should go?



Write down
your thoughts
or draw
directly on
this map



Share your ideas:

Name: _____

Address: _____

Email: _____

Phone: _____