

APPENDIX 1

Abbreviations

AcMP	Activity Management Plan
CRETS	Christchurch Rolleston and Environs Transportation Study
CSM2	Christchurch Southern Motorway, Stage 2
ECan	Environment Canterbury (Canterbury Regional Council)
EDA	Existing Development Area
ESSS	East Selwyn Sewage Scheme
NZHPT	New Zealand Historic Places Trust
NZTA	New Zealand Transport Agency
ODP	Outline Development Plan
PC1	Proposed Change 1 to the RPS
PWTP	Pines Wastewater Treatment Plant
RPS	Regional Policy Statement
SDC	Selwyn District Council
SDP	Selwyn District Plan
SWAP	South West Area Plan
UDS	Greater Christchurch Urban Development Strategy
UL	Urban Limit

District Plan Zoning

L1	Living 1 Zone
L1A	Living 1A Zone
L1A1	Living 1A1 Zone
L1A2	Living 1A2 Zone
L1A3	Living 1A3 Zone
L1A4	Living 1A4 Zone
L1A5	Living 1A5 Zone
LX	Living X Zone
L2A	Living 2A Zone
B1	Business Zone
Def	Deferred Zoning (pending additional capacity to the reticulated wastewater network)
IP	Inner Plains (Rural Zone)

APPENDIX 2

Consultation process

Introduction

Consultation is an essential component in the formulation of Structure Plans as they guide the future development of townships to achieve community aspirations. The Prebbleton Structure Plan has gone through three important consultation processes:

- ☐ Initial consultation phase;
- ☐ Draft Prebbleton Structure Plan
- ☐ Hearing Comments on the Draft Prebbleton Structure Plan

Initial Consultation Phase

A number of methods were used to engage the community and interested parties to identify the key issues required to be addressed in the Structure Plan, which included:

- ☐ Direct liaison with the land owners of the three 'Greenfield' development areas (SP1, SP2 and SP3) and strategic land holdings (business and deferred zoned land and Meadow Mushrooms);
- ☐ Feedback was sought from statutory authorities and government agencies (Ministry of Education, Mahaanui Kurataiao Ltd, New Zealand Historic Places Trust and UDS Partners);
- ☐ Meetings and presentations to community interest groups (Prebbleton Community Association, Community Museum, Prebbleton Plunket and Prebbleton Enviro-village).



A Structure Plan drop-in evening was held at the Prebbleton Community Hall on the 20th May 2009 to:

- (a) Introduce the Structure Plan to members of the public;
- (b) Seek feedback from the community on what traits define Prebbleton's unique 'character'; and
- (c) Identify the key issues that needed to be addressed in the Structure Plan.

Approximately 30 members of the public attended this initial drop-in evening.

Only 11 responses were received to this questionnaire. However, the information provided by respondents was constructive and useful in highlighting the communities understanding and thoughts on the above matters.

Draft Structure Plan Consultation

- Flyers advertising the process for lodging comments on the draft and the drop-in evening were delivered to 850 households in Prebbleton;
- Council workshop to update elected representatives;
- Letters sent to stakeholders, statutory authorities and interested parties;
- Individual meetings with each of the 15 land owners within the three 'Greenfield' development areas to review the preliminary ODP's; and
- Advertisements in the Council Call publication, newspaper articles and website based information.



Two Structure Plan drop-in evenings were held at the Prebbleton Community Hall on the 24th and 27th September 2009 to: (a) Provide a project update; (b) Detail the pattern of development, identify areas of open space, confirm the location and nature of infrastructure and establish what characteristics of Prebbleton are important; and (c) To facilitate comments on the Draft Structure Plan.

The drop-in evening provided information on the following:

- ☐ Background to the Structure Plan;
- ☐ Detailed the growth pressures in Prebbleton since 2000;
- ☐ Summarised the community feedback that informed the Draft Structure Plan;
- ☐ Outlined the number of households, sequencing, location and existing zoning (if applicable) of each ODP area to accommodate the household numbers allocated to Prebbleton up to 2041;
- ☐ Introduced the preliminary ODP's; and
- ☐ Prescribed the methods to retain Prebbleton's unique 'character'.



Approximately 45 members of the public attended the drop-in evening on the 24th September 2009 and a further 25 attended the following session on the 27th September 2009.

Comments Received and Public Hearing

As part of the consultation process, the public were encouraged to make comments on the Draft Structure Plan. The following highlights the four main themes that arose from the comments received on the Draft Structure Plan, which are:

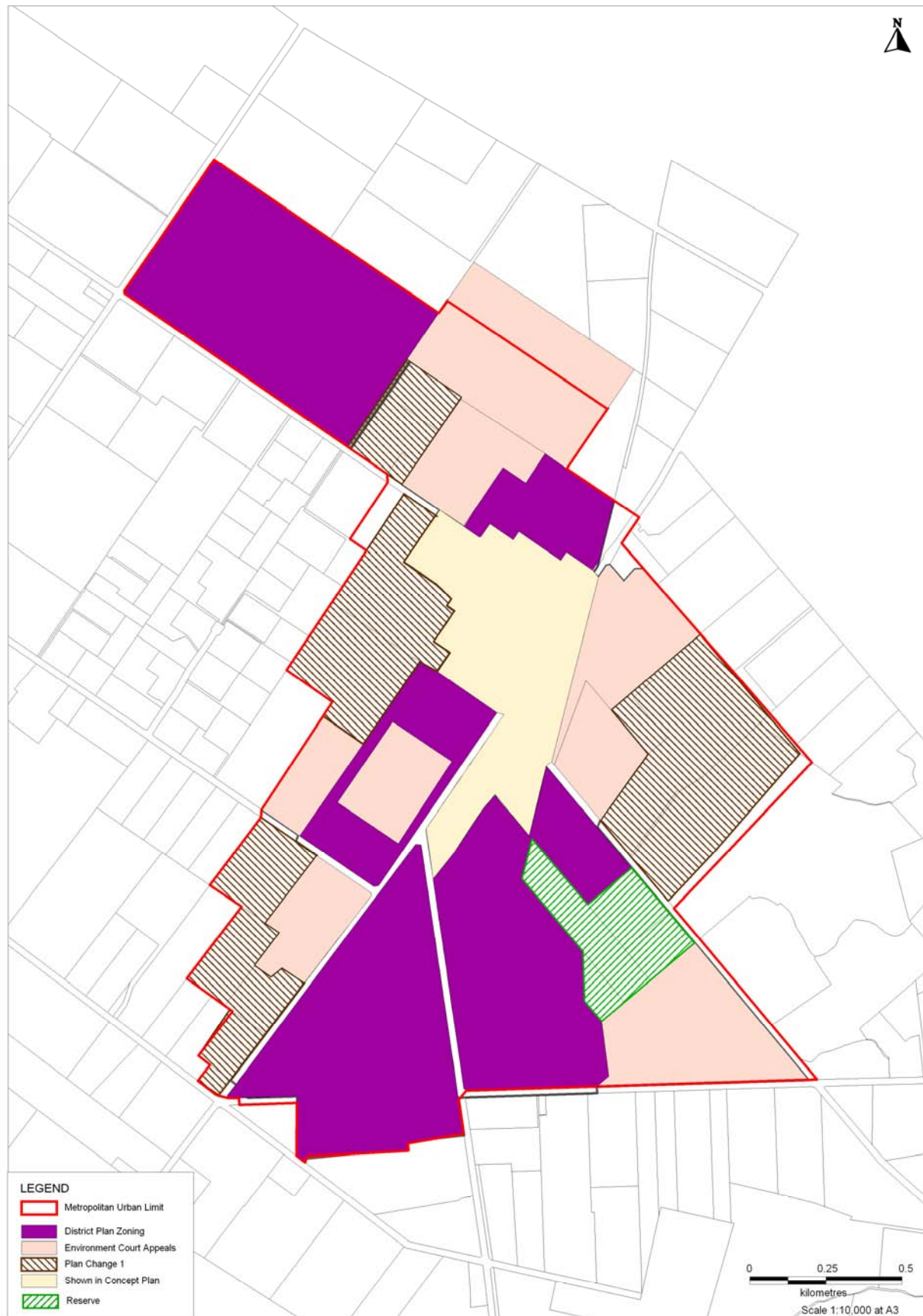
- (1) Support for the Structure Plan;
- (2) Concerns with mixed housing densities and ODP's;
- (3) Prebbleton's character and community make-up; and
- (4) Concerns with the transport network

A hearing was held on the 7th December 2009 to provide the respondents who lodged comments on the Draft Structure Plan the opportunity to present their views to the Council. Two Councillors were appointed to consider all the comments received, endorse Council's response to each comment and to review the proposed amendments to the Structure Plan. There were 8 of the 31 respondents in attendance at the hearing.

The final Prebbleton Structure Plan was adopted by the Council at the meeting held on the 24th of February 2010. This decision requires all future Council reports relating to Prebbleton to clearly identify its impacts on, and consistency with, the Prebbleton Structure Plan. It also accepted the Hearing Panels endorsement of the Officer's responses to each of the comments received on the Draft Prebbleton Structure Plan.

APPENDIX 3 - MAPS

1. Growth of urban zoning in Prebbleton



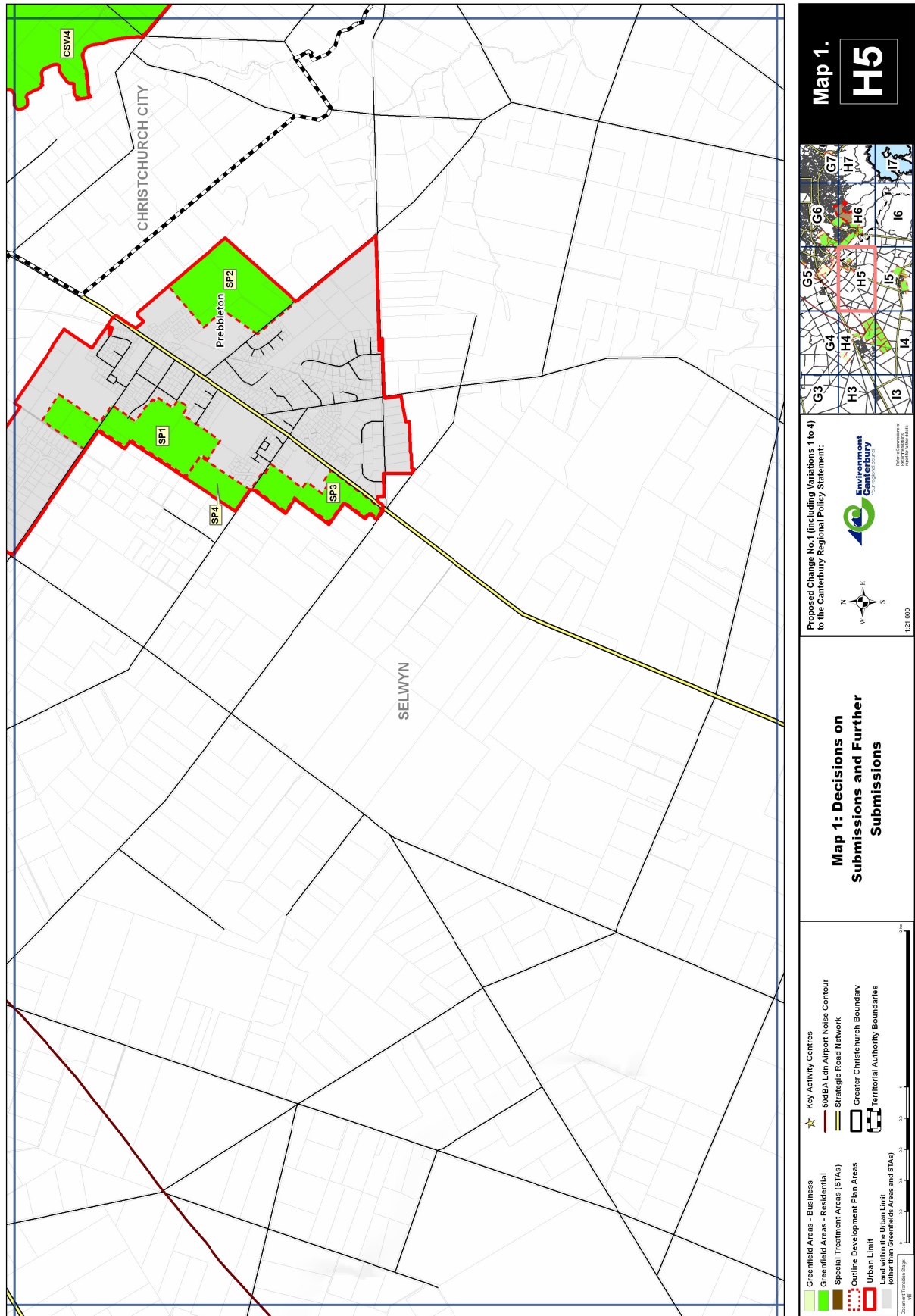
Evolution of Prebbleton

2. Urban Development Strategy



Greater Christchurch Urban Development Strategy Area

3. RPS Decisions on submissions & further submissions: Map 1 H5



4. Extract from Christchurch Rolleston & Environs Transportation Study (CRETS)

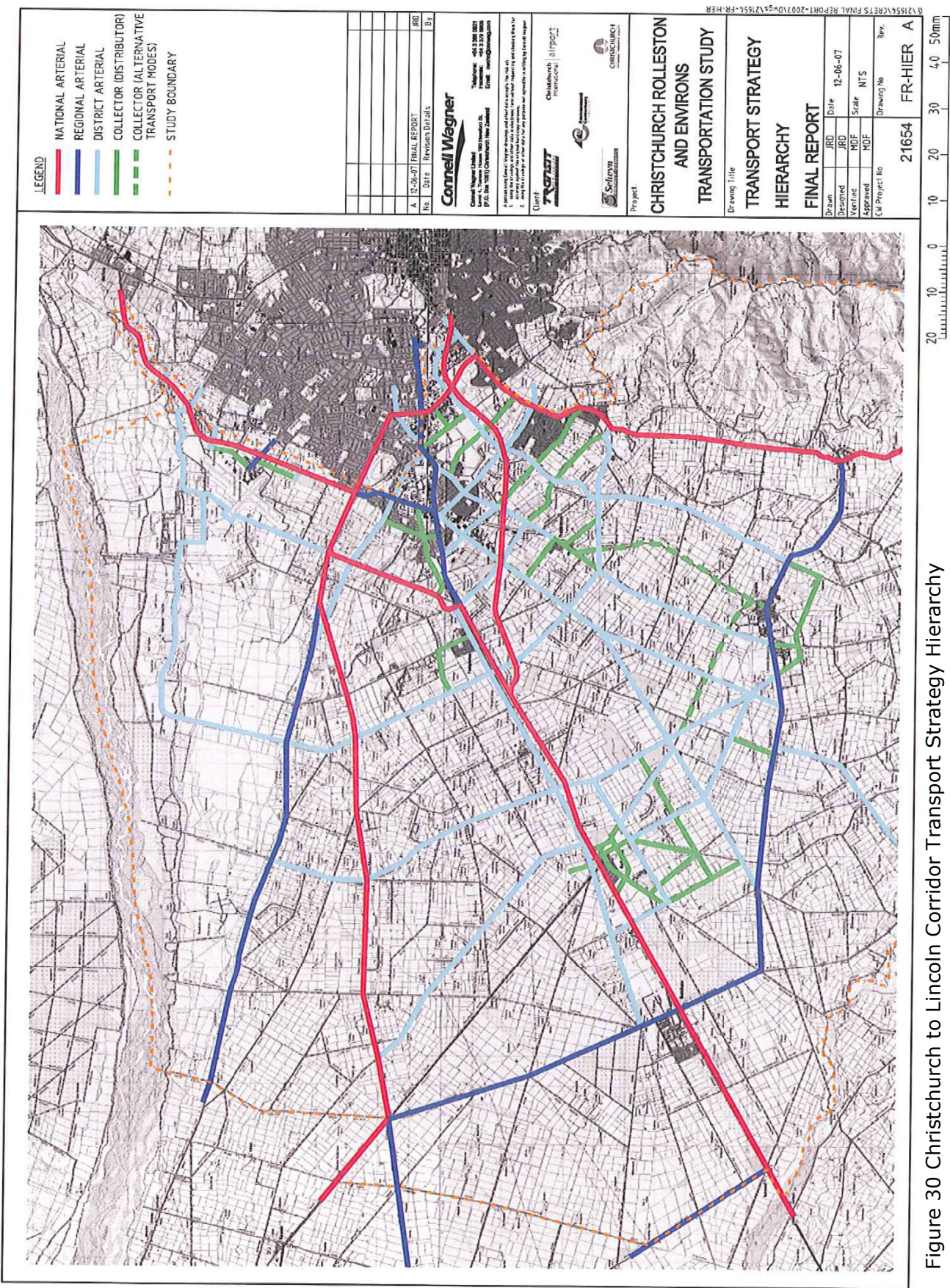


Figure 30 Christchurch to Lincoln Corridor Transport Strategy Hierarchy

5. South West Area Plan (SWAP)

Christchurch City Council SWAP Figure 7: Integrated land use pattern 2041

