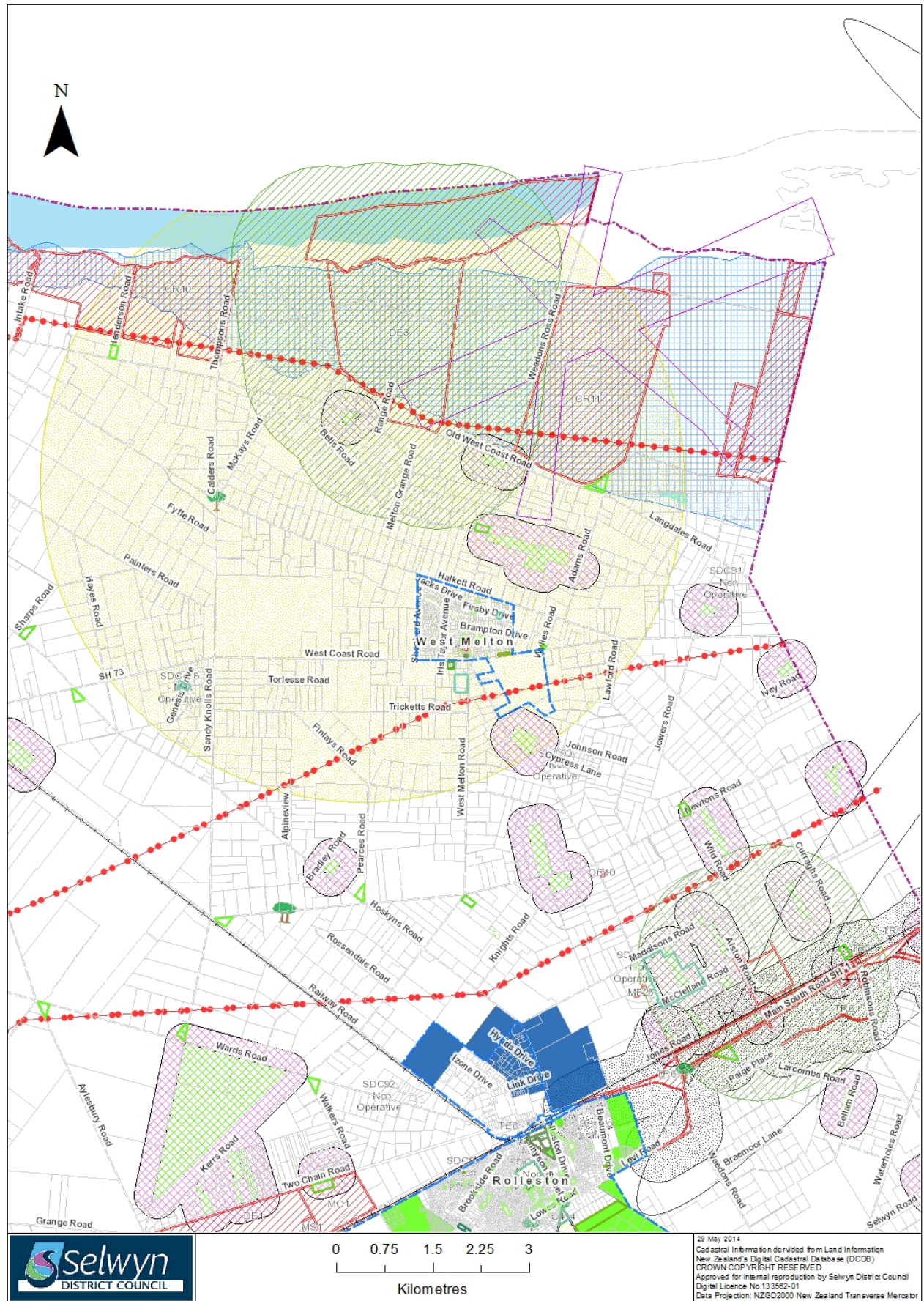


# MAP 10

## **Land use layer**

### **West Melton environs**



<b>Boundary</b>		
<b>District Sites</b>		
	Cemeteries	
	Forestry	
	Gravel Reserve	
	Halls, Community Centres	
	Heritage Building	
	Land	
	Neighbourhood Reserves	
	Pensioner Housing	
	Property and Buildings	
	Recreational Reserves	
	Rental Housing	
	Swimming Pools	
	Toilets	
	Utility Reserve	
	SDC Forestry Blocks	
<b>Road</b>		
	All Road Labels	
<b>Railway</b>		
	Railway	
<b>Rating</b>		
	Parcels	
<b>LURP and Greenfield Areas</b>		
	Business	
	Residential	
<b>Layer Group 1</b>		
	Confirmed SNA Sites	
	Visual Amenity Landscape Zones	
	Open Space Covenants	
<b>Layer Group 4</b>		
	Protected Trees	
	ChCh International Airport Noise	
	NZ Defence Force Buffer	
<b>Layer Group 5</b>		
	Transpower Main Lines	
	Archaeological Site	
<b>Layer Group 6</b>		
	Statutory Aknownledged Sites	
	Non Operative	
	Operative	
	NZTA Widening Designation	
	CSM2 / MSRFL Designation	
	500m Buffer of CSM2 / MSRFL Designation	
<b>Layer Group 7</b>		
	Heritage Buildings	
	Wahi Taonga Management Sites	
	Scheduled Sites	
	Silent File Areas	
<b>Layer Group 8</b>		
	West Melton Airport	
	Intensive Farming	
	Intensive Farming Buffer	
	West Melton Observatory Zone	
	Outstanding Natural Feature	
<b>Layer Group 9</b>		
	Forestry Exclusion Areas	
	Wahi Taonga Management Areas	
	Outstanding Landscapes	
	Lake Ellesmere Flood Area	
	Lower Plains Flood Area	
	Waimakariri Flood Plain	
	Waterbodies	

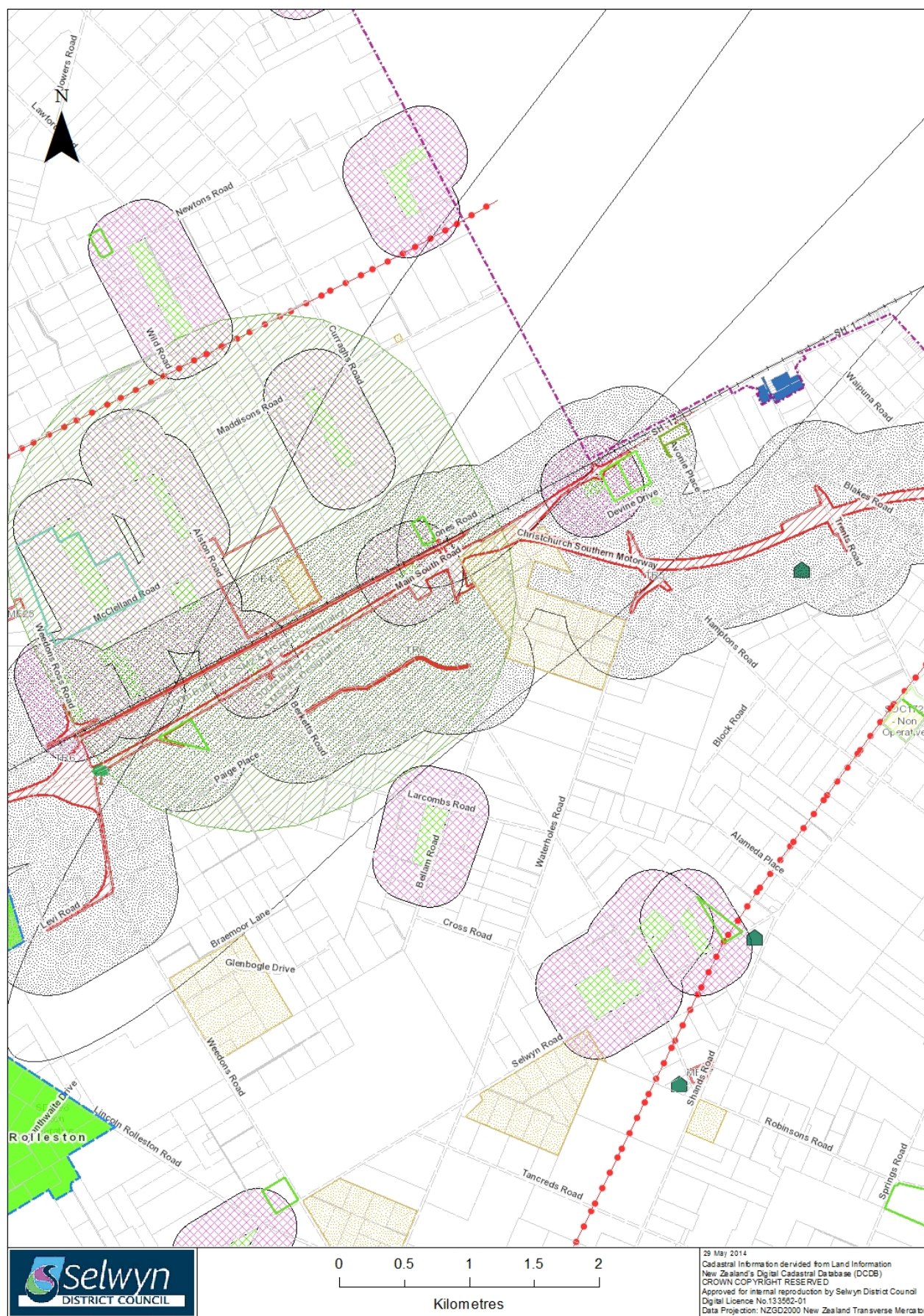
**This page has intentionally been left blank**



# MAP 11

## **Land use layer**

### **Templeton environs**



<b>Boundary</b>		
<b>District Sites</b>		
	Cemeteries	
	Forestry	
	Gravel Reserve	
	Halls, Community Centres	
	Heritage Building	
	Land	
	Neighbourhood Reserves	
	Pensioner Housing	
	Property and Buildings	
	Recreational Reserves	
	Rental Housing	
	Swimming Pools	
	Toilets	
	Utility Reserve	
	SDC Forestry Blocks	
<b>Road</b>		
	All Road Labels	
<b>Railway</b>		
	Railway	
<b>Rating</b>		
	Parcels	
<b>LURP and Greenfield Areas</b>		
	Business	
	Residential	
<b>Layer Group 1</b>		
	Confirmed SNA Sites	
	Visual Amenity Landscape Zones	
	Open Space Covenants	
<b>Layer Group 4</b>		
	Protected Trees	
	ChCh International Airport Noise	
	NZ Defence Force Buffer	
<b>Layer Group 5</b>		
	Transpower Main Lines	
	Archaeological Site	
<b>Layer Group 6</b>		
	Statutory Aknownledged Sites	
	Non Operative	
	Operative	
	NZTA Widening Designation	
	CSM2 / MSRFL Designation	
	500m Buffer of CSM2 / MSRFL Designation	
<b>Layer Group 7</b>		
	Heritage Buildings	
	Wahi Taonga Management Sites	
	Scheduled Sites	
	Silent File Areas	
<b>Layer Group 8</b>		
	West Melton Airport	
	Intensive Farming	
	Intensive Farming Buffer	
	West Melton Observatory Zone	
	Outstanding Natural Feature	
<b>Layer Group 9</b>		
	Forestry Exclusion Areas	
	Wahi Taonga Management Areas	
	Outstanding Landscapes	
	Lake Ellesmere Flood Area	
	Lower Plains Flood Area	
	Waimakariri Flood Plain	
	Waterbodies	

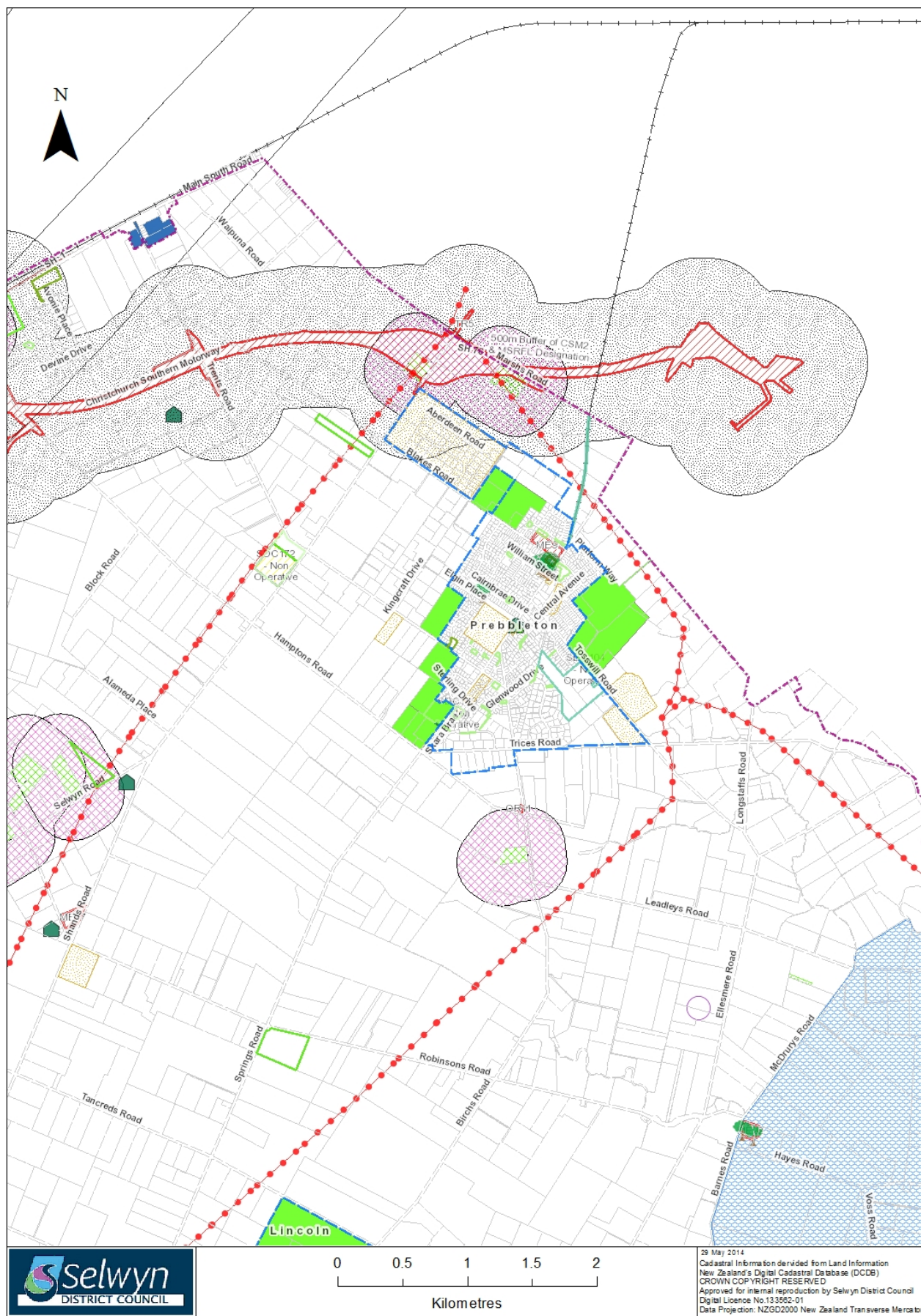
This page has intentionally been left blank



# MAP 12

## **Land use layer**

### **Prebbleton environs**



<b>Boundary</b>		
<b>District Sites</b>		
	Cemeteries	
	Forestry	
	Gravel Reserve	
	Halls, Community Centres	
	Heritage Building	
	Land	
	Neighbourhood Reserves	
	Pensioner Housing	
	Property and Buildings	
	Recreational Reserves	
	Rental Housing	
	Swimming Pools	
	Toilets	
	Utility Reserve	
	SDC Forestry Blocks	
<b>Road</b>		
	All Road Labels	
<b>Railway</b>		
	Railway	
<b>Rating</b>		
	Parcels	
<b>LURP and Greenfield Areas</b>		
	Business	
	Residential	
<b>Layer Group 1</b>		
	Confirmed SNA Sites	
	Visual Amenity Landscape Zones	
	Open Space Covenants	
<b>Layer Group 4</b>		
	Protected Trees	
	ChCh International Airport Noise	
	NZ Defence Force Buffer	
<b>Layer Group 5</b>		
	Transpower Main Lines	
	Archaeological Site	
<b>Layer Group 6</b>		
	Statutory Aknownledged Sites	
	Non Operative	
	Operative	
	NZTA Widening Designation	
	CSM2 / MSRFL Designation	
	500m Buffer of CSM2 / MSRFL Designation	
<b>Layer Group 7</b>		
	Heritage Buildings	
	Wahi Taonga Management Sites	
	Scheduled Sites	
	Silent File Areas	
<b>Layer Group 8</b>		
	West Melton Airport	
	Intensive Farming	
	Intensive Farming Buffer	
	West Melton Observatory Zone	
	Outstanding Natural Feature	
<b>Layer Group 9</b>		
	Forestry Exclusion Areas	
	Wahi Taonga Management Areas	
	Outstanding Landscapes	
	Lake Ellesmere Flood Area	
	Lower Plains Flood Area	
	Waimakariri Flood Plain	
	Waterbodies	

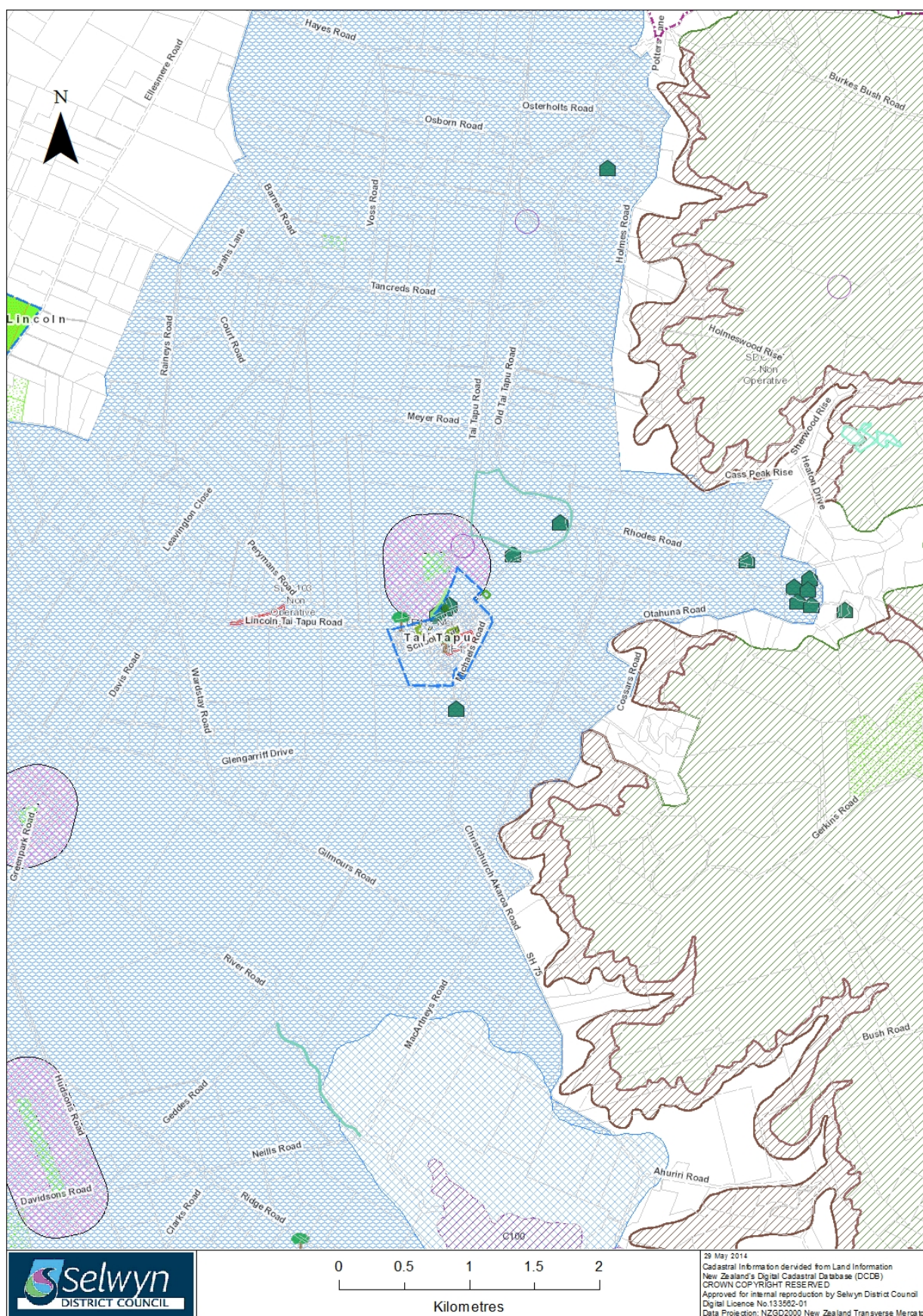
**This page has intentionally been left blank**



# MAP 13

## **Land use layer**

### **Tai Tapu environs**



<b>Boundary</b>		
<b>District Sites</b>		
	Cemeteries	
	Forestry	
	Gravel Reserve	
	Halls, Community Centres	
	Heritage Building	
	Land	
	Neighbourhood Reserves	
	Pensioner Housing	
	Property and Buildings	
	Recreational Reserves	
	Rental Housing	
	Swimming Pools	
	Toilets	
	Utility Reserve	
	SDC Forestry Blocks	
<b>Road</b>		
	All Road Labels	
<b>Railway</b>		
	Railway	
<b>Rating</b>		
	Parcels	
<b>LURP and Greenfield Areas</b>		
	Business	
	Residential	
<b>Layer Group 1</b>		
	Confirmed SNA Sites	
	Visual Amenity Landscape Zones	
	Open Space Covenants	
<b>Layer Group 4</b>		
	Protected Trees	
	ChCh International Airport Noise	
	NZ Defence Force Buffer	
<b>Layer Group 5</b>		
	Transpower Main Lines	
	Archaeological Site	
<b>Layer Group 6</b>		
	Statutory Aknownledged Sites	
	Non Operative	
	Operative	
	NZTA Widening Designation	
	CSM2 / MSRFL Designation	
	500m Buffer of CSM2 / MSRFL Designation	
<b>Layer Group 7</b>		
	Heritage Buildings	
	Wahi Taonga Management Sites	
	Scheduled Sites	
	Silent File Areas	
<b>Layer Group 8</b>		
	West Melton Airport	
	Intensive Farming	
	Intensive Farming Buffer	
	West Melton Observatory Zone	
	Outstanding Natural Feature	
<b>Layer Group 9</b>		
	Forestry Exclusion Areas	
	Wahi Taonga Management Areas	
	Outstanding Landscapes	
	Lake Ellesmere Flood Area	
	Lower Plains Flood Area	
	Waimakariri Flood Plain	
	Waterbodies	

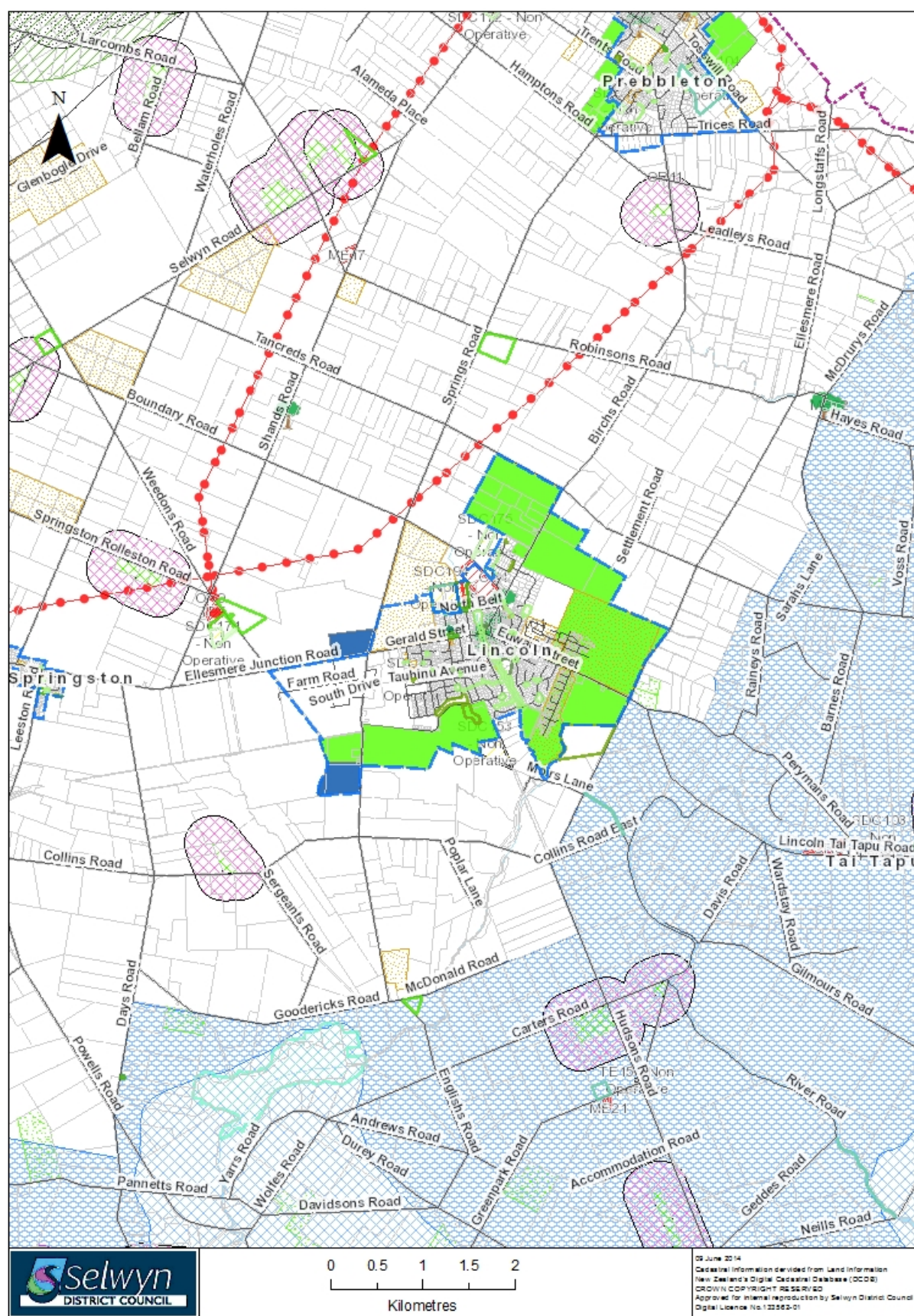
**This page has intentionally been left blank**



# MAP 14

## **Land use layer**

### **Lincoln environs**



<b>Boundary</b>		
<b>District Sites</b>		
	Cemeteries	
	Forestry	
	Gravel Reserve	
	Halls, Community Centres	
	Heritage Building	
	Land	
	Neighbourhood Reserves	
	Pensioner Housing	
	Property and Buildings	
	Recreational Reserves	
	Rental Housing	
	Swimming Pools	
	Toilets	
	Utility Reserve	
	SDC Forestry Blocks	
<b>Road</b>		
	All Road Labels	
<b>Railway</b>		
	Railway	
<b>Rating</b>		
	Parcels	
<b>LURP and Greenfield Areas</b>		
	Business	
	Residential	
<b>Layer Group 1</b>		
	Confirmed SNA Sites	
	Visual Amenity Landscape Zones	
	Open Space Covenants	
<b>Layer Group 4</b>		
	Protected Trees	
	ChCh International Airport Noise	
	NZ Defence Force Buffer	
<b>Layer Group 5</b>		
	Transpower Main Lines	
	Archaeological Site	
<b>Layer Group 6</b>		
	Statutory Aknownledged Sites	
	Non Operative	
	Operative	
	NZTA Widening Designation	
	CSM2 / MSRFL Designation	
	500m Buffer of CSM2 / MSRFL Designation	
<b>Layer Group 7</b>		
	Heritage Buildings	
	Wahi Taonga Management Sites	
	Scheduled Sites	
	Silent File Areas	
<b>Layer Group 8</b>		
	West Melton Airport	
	Intensive Farming	
	Intensive Farming Buffer	
	West Melton Observatory Zone	
	Outstanding Natural Feature	
<b>Layer Group 9</b>		
	Forestry Exclusion Areas	
	Wahi Taonga Management Areas	
	Outstanding Landscapes	
	Lake Ellesmere Flood Area	
	Lower Plains Flood Area	
	Waimakariri Flood Plain	
	Waterbodies	

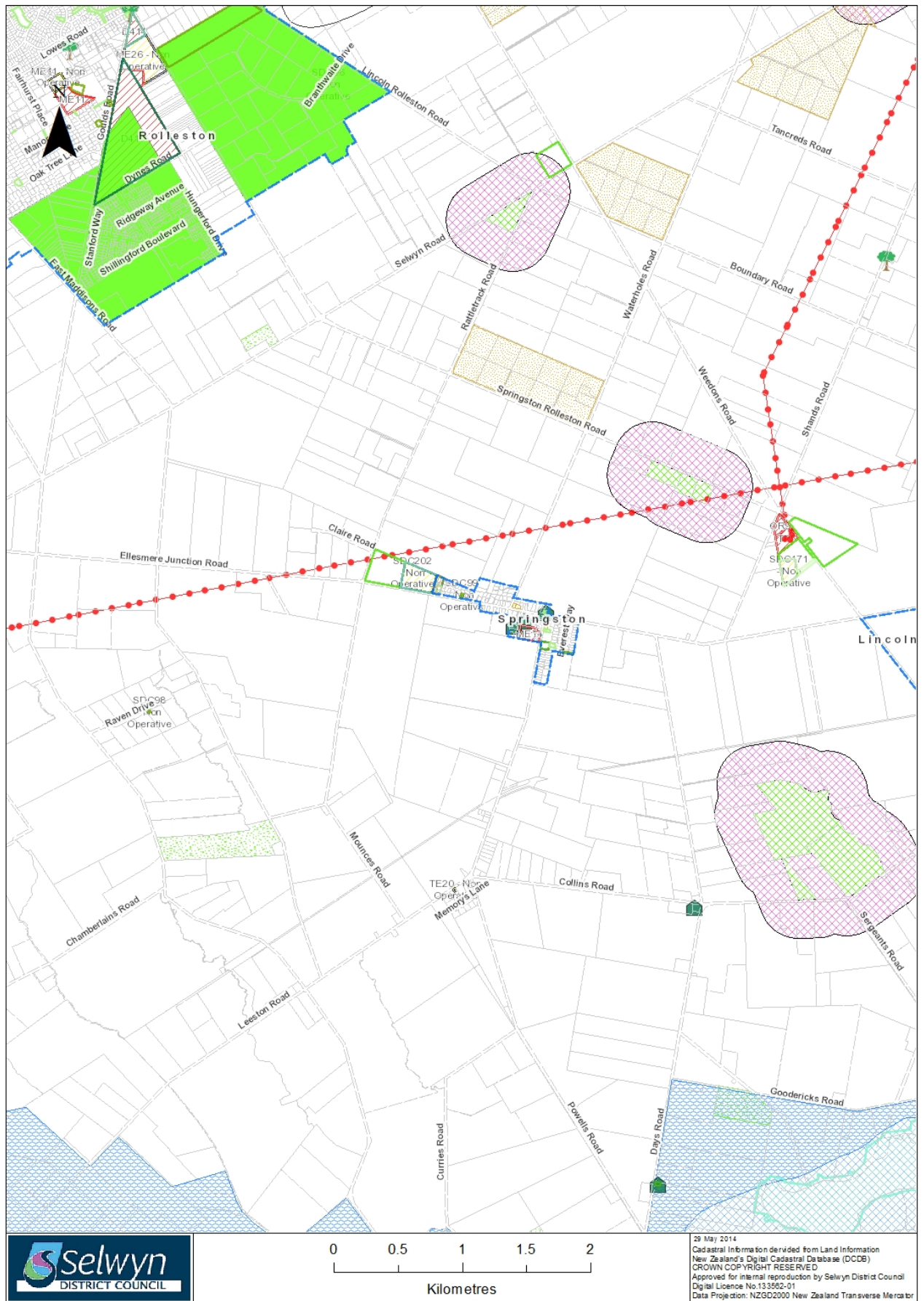
This page has intentionally been left blank



# MAP 15

## **Land use layer**

### **Springston environs**



<b>Boundary</b>		
<b>District Sites</b>		
	Cemeteries	
	Forestry	
	Gravel Reserve	
	Halls, Community Centres	
	Heritage Building	
	Land	
	Neighbourhood Reserves	
	Pensioner Housing	
	Property and Buildings	
	Recreational Reserves	
	Rental Housing	
	Swimming Pools	
	Toilets	
	Utility Reserve	
	SDC Forestry Blocks	
<b>Road</b>		
	All Road Labels	
<b>Railway</b>		
	Railway	
<b>Rating</b>		
	Parcels	
<b>LURP and Greenfield Areas</b>		
	Business	
	Residential	
<b>Layer Group 1</b>		
	Confirmed SNA Sites	
	Visual Amenity Landscape Zones	
	Open Space Covenants	
<b>Layer Group 4</b>		
	Protected Trees	
	ChCh International Airport Noise	
	NZ Defence Force Buffer	
<b>Layer Group 5</b>		
	Transpower Main Lines	
	Archaeological Site	
<b>Layer Group 6</b>		
	Statutory Aknownledged Sites	
	Non Operative	
	Operative	
	NZTA Widening Designation	
	CSM2 / MSRFL Designation	
	500m Buffer of CSM2 / MSRFL Designation	
<b>Layer Group 7</b>		
	Heritage Buildings	
	Wahi Taonga Management Sites	
	Scheduled Sites	
	Silent File Areas	
<b>Layer Group 8</b>		
	West Melton Airport	
	Intensive Farming	
	Intensive Farming Buffer	
	West Melton Observatory Zone	
	Outstanding Natural Feature	
<b>Layer Group 9</b>		
	Forestry Exclusion Areas	
	Wahi Taonga Management Areas	
	Outstanding Landscapes	
	Lake Ellesmere Flood Area	
	Lower Plains Flood Area	
	Waimakariri Flood Plain	
	Waterbodies	

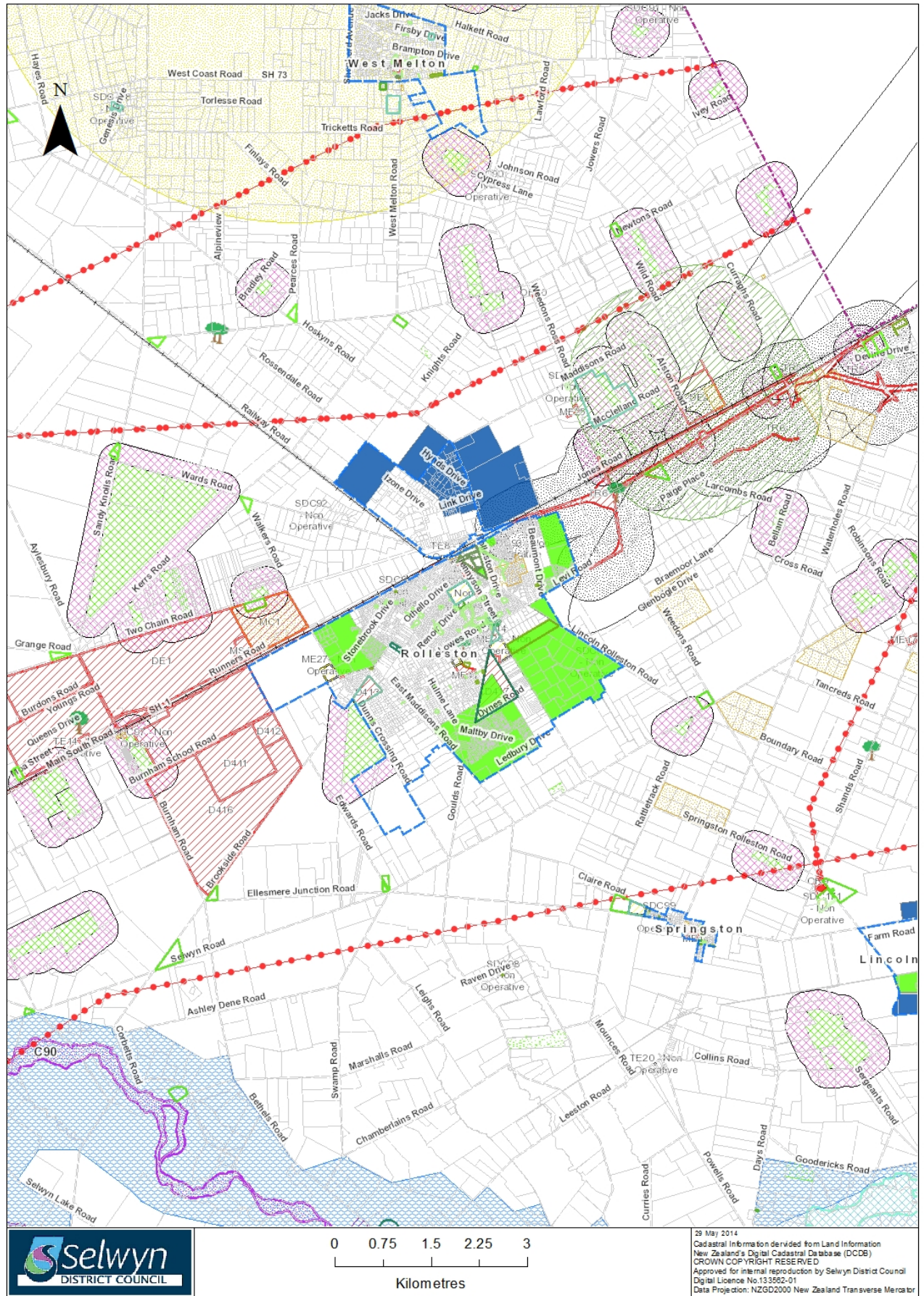
This page has intentionally been left blank

# MAP 16

## **Land use layer**

### **Rolleston environs**





<b>Boundary</b>		
<b>District Sites</b>		
	Cemeteries	
	Forestry	
	Gravel Reserve	
	Halls, Community Centres	
	Heritage Building	
	Land	
	Neighbourhood Reserves	
	Pensioner Housing	
	Property and Buildings	
	Recreational Reserves	
	Rental Housing	
	Swimming Pools	
	Toilets	
	Utility Reserve	
	SDC Forestry Blocks	
<b>Road</b>		
	All Road Labels	
<b>Railway</b>		
	Railway	
<b>Rating</b>		
	Parcels	
<b>LURP and Greenfield Areas</b>		
	Business	
	Residential	
<b>Layer Group 1</b>		
	Confirmed SNA Sites	
	Visual Amenity Landscape Zones	
	Open Space Covenants	
<b>Layer Group 4</b>		
	Protected Trees	
	ChCh International Airport Noise	
	NZ Defence Force Buffer	
<b>Layer Group 5</b>		
	Transpower Main Lines	
	Archaeological Site	
<b>Layer Group 6</b>		
	Statutory Aknownledged Sites	
	Non Operative	
	Operative	
	NZTA Widening Designation	
	CSM2 / MSRFL Designation	
	500m Buffer of CSM2 / MSRFL Designation	
<b>Layer Group 7</b>		
	Heritage Buildings	
	Wahi Taonga Management Sites	
	Scheduled Sites	
	Silent File Areas	
<b>Layer Group 8</b>		
	West Melton Airport	
	Intensive Farming	
	Intensive Farming Buffer	
	West Melton Observatory Zone	
	Outstanding Natural Feature	
<b>Layer Group 9</b>		
	Forestry Exclusion Areas	
	Wahi Taonga Management Areas	
	Outstanding Landscapes	
	Lake Ellesmere Flood Area	
	Lower Plains Flood Area	
	Waimakariri Flood Plain	
	Waterbodies	

**This page has intentionally been left blank**