

# Rolleston

## Living 1B Deferred Zone Structure Plan

### What's happening with the Structure Plan?

**As many of you will know, the Council is in the process of preparing a Structure Plan for the Rolleston Living 1B Deferred zone.**

Open days were held in March 2006 and 35 questionnaires completed. The results of these were reported in our first newsletter in May last year.

The next step was to prepare a draft structure plan taking on board all the feedback received from the first round of consultation.

The plan (overleaf) was designed to incorporate the features residents valued, or would like to see in the area, such as a sense of spaciousness, local parks, the water race and pedestrian and bicycle connections. It also needed to be designed to enable the area to be efficiently serviced, including a safe network of local roads which avoided multiple accesses onto the surrounding, busier roads.

In October last year two more open days were held, with around 80 people attending. Landowners were sent the draft structure plan prior to the open days and invited to comment and offer their own suggestions. A second questionnaire was provided, seeking more specific information from affected landowners. 32 questionnaires were returned.

Since October the comments received at the open days and in the questionnaires have been carefully considered. There are some diverse views and it is proving difficult to develop a plan which is likely to be acceptable to everyone.

Some landowner requirements can be accommodated through alterations to the Draft Structure Plan, but there are still areas of conflict, particularly in relation to preferred minimum section sizes.

### Views on the draft Structure Plan:

Most respondents to the questionnaire generally supported the Structure Plan. 21 respondents supported the location of the reserves, while 5 did not. 17 supported the location of the roads, while 9 did not. 15 supported locating walkways/cycleways next to the water race, while 12 did not. 26 supported keeping existing trees on reserves and roadways, while 2 did not.

Participants in the first round of consultation were very supportive of cycling and walking access. However, when possible routes were shown on the draft plan, respondents were not so supportive, with 11 respondents supporting all the walkway/cycleways, 8 supporting some of them and 8 supporting none of them.

Continued overleaf >>>

Would you like more information?

Nick Regnault  
Strategic Planner

Please contact me on 03 324 5827 or Fax: 03 324 3531

e-mail [nick.regnault@sewlyn.govt.nz](mailto:nick.regnault@sewlyn.govt.nz)





When asked specifically about a pedestrian cycling access from Fairhurst Place to the proposed school site many people (15) were opposed to an access link at all, although 13 respondents supported at least one link.

There was a preference for new roads to have kerb and channel and Jozecom Place, Fairhurst Place and Waterbridge Way to remain as they are, with no kerb and channel.

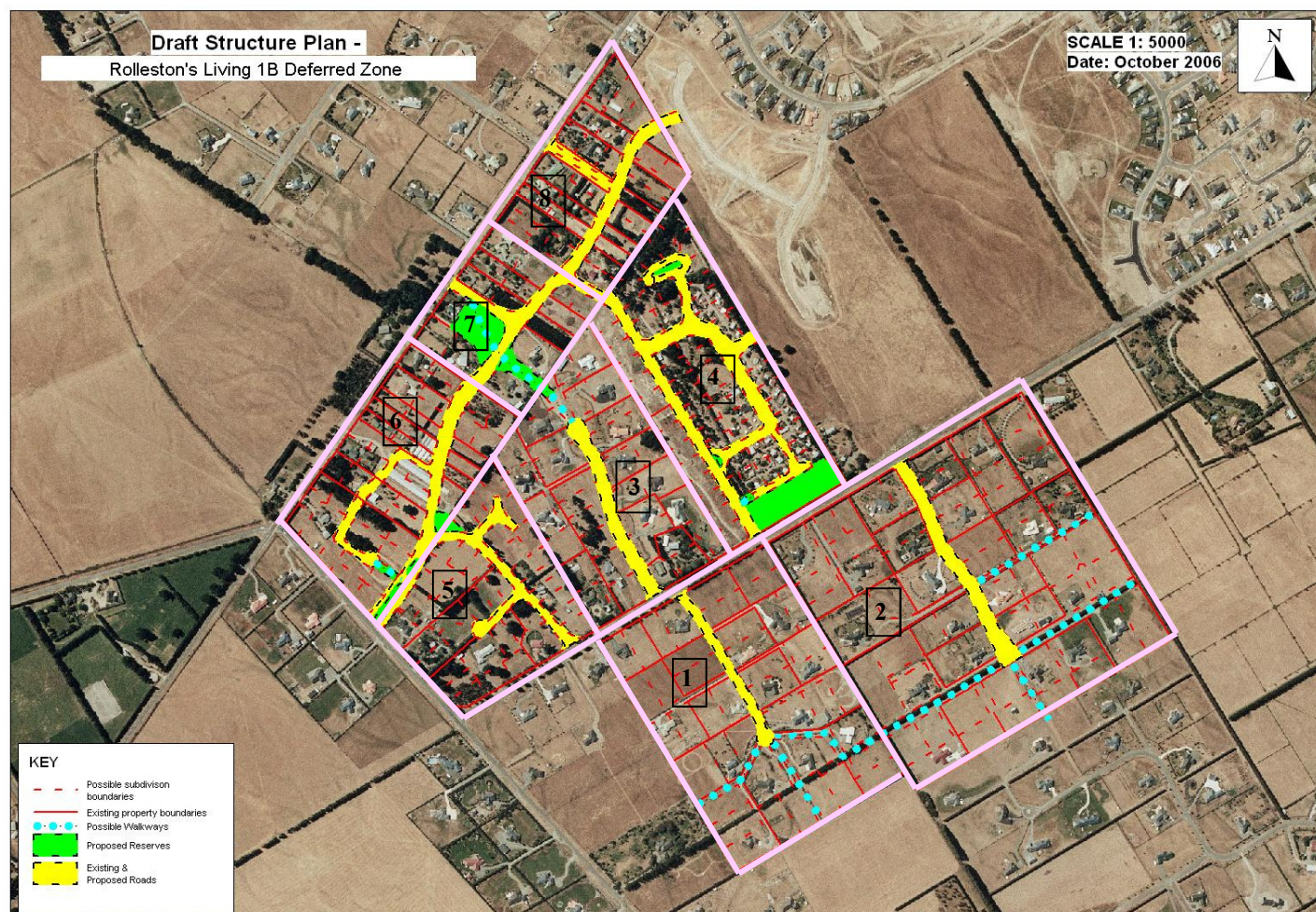
There was a diversity of views in relation to minimum section sizes with 13 preferring 2000m<sup>2</sup> or above, 13 preferring 1000m<sup>2</sup> and 6 preferring 750m<sup>2</sup> or less

**New to the area? Or missed the open meetings?**

You can still access much of the information from our website:

[www.selwyn.govt.nz](http://www.selwyn.govt.nz)

In order to continue to move towards a Structure Plan that can be supported by the majority of landowners, the Living 1B zone has been broken down into a number of sub-areas for detailed consideration. These are outlined on the plan below.



## What Next?

Your Councillors and Community Board members will shortly be meeting to discuss the best way to proceed. After the meeting all stakeholders will be notified individually of the outcome. In the meantime you may like to look at the detailed results of the consultation exercises. These are posted on the Council's website, under Planning ([www.selwyn.govt.nz](http://www.selwyn.govt.nz)) and available at Council Service Centres.