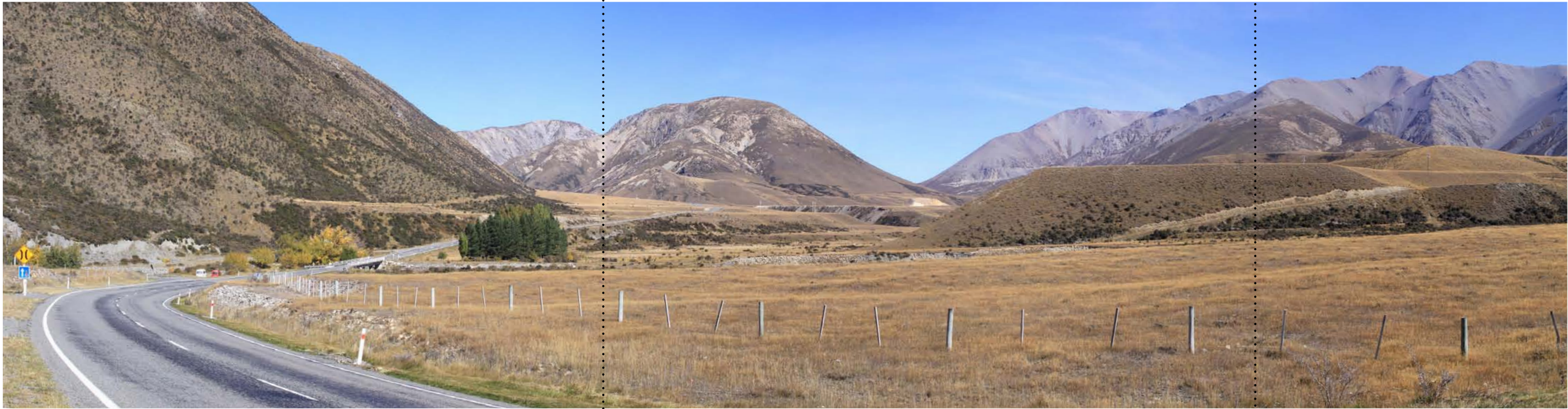


Viewpoint 01 - Location Plan

Black dotted line shows the extent of the following photo simulation



Viewpoint 01 - Overall Panorama stitched from 9 portrait photos

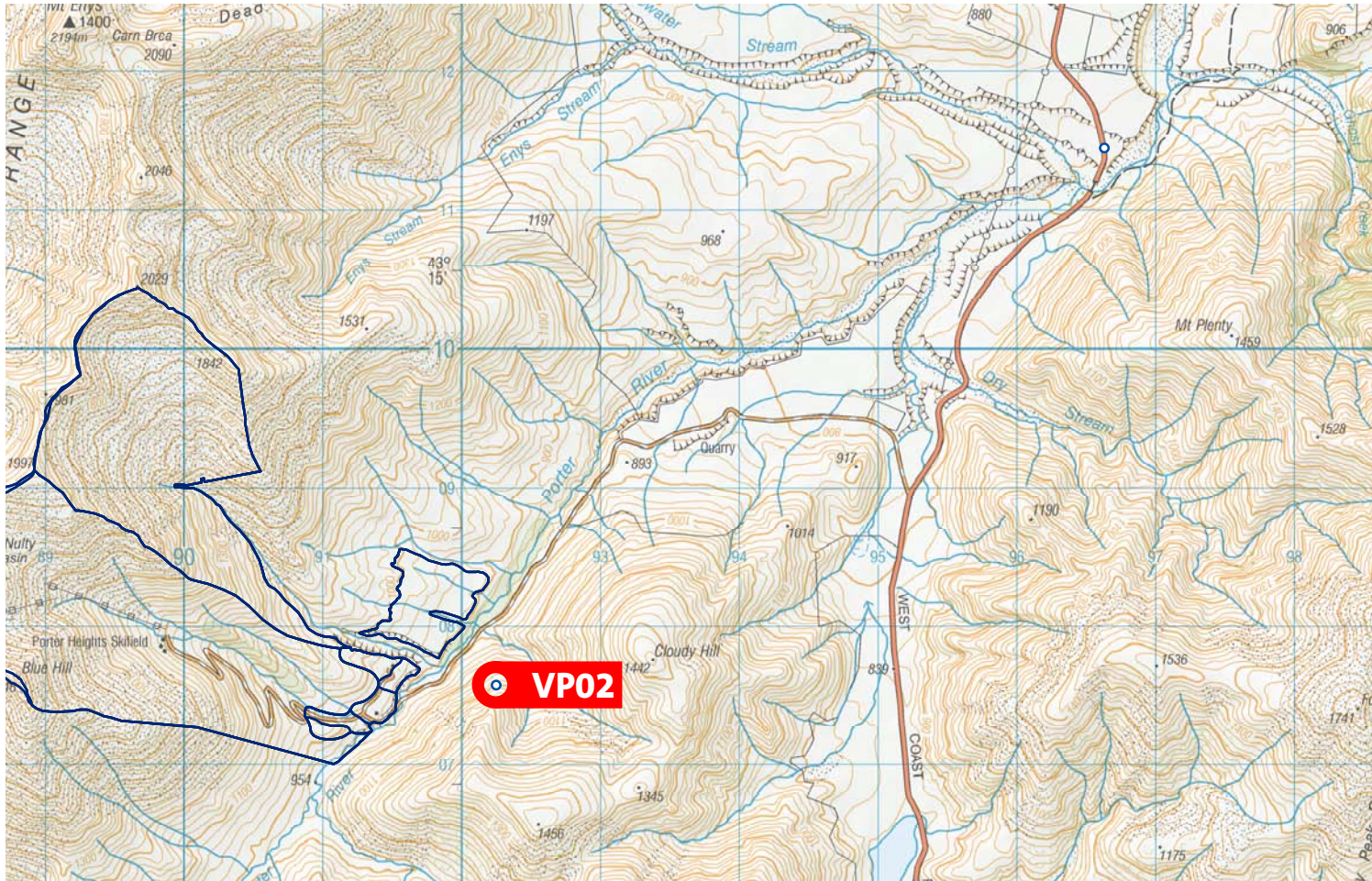
NZTM Easting	: 1 496 634 mE	Elevation	: 724m Approx (GD2000)
NZTM Northing	: 5 211 454 mN	Date of Photography	: 12:49pm, 2 April 2011
Camera Model	: Canon EOS 50D	Horizontal FOV	: 90°





Viewpoint Details

NZTM Easting	: 1 496 634 mE	Elevation	: 724m Approx (GD2000)
NZTM Northing	: 5 211 454 mN	Date of Photography	: 12:49pm, 2 April 2011
Camera Model	: Canon EOS 50D	Focal Length	: 48mm (30mm x 1.6 crop factor)
Viewing Distance (A3)	: 50cm	Horizontal FOV	: 40°
Data source: Electronic base model built using Lidar survey data supplied by NZ Aerial Mapping. Survey setout for photo control references by Eliot Sinclair. All earthworks modelling by Eliot Sinclair. Building models based on concept design sketches by BDA Architects. Building models approved by BDA Architects.			



Viewpoint 02 - Location Plan

Black dotted line shows the extent of the following photo simulation



Viewpoint 02 - Overall Panorama stitched from 9 portrait photos





Viewpoint Details

NZTM Easting : 1 492 248 mE
NZTM Northing : 5 207 579 mN

Elevation : 1 110m Approx (GD2000)
Date of Photography : 1:43pm, 2 April 2011

Camera Model : Canon EOS 50D
Viewing Distance (A3) : 50cm

Focal Length : 48mm (30mm x 1.6 crop factor)
Horizontal FOV : 40°

Data source: Electronic base model built using Lidar survey data supplied by NZ Aerial Mapping. Survey setout for photo control references by Eliot Sinclair. All earthworks modelling by Eliot Sinclair. Building models based on concept design sketches by BDA Architects. Building models approved by BDA Architects.

PROPOSED PORTERS SKI AREA EXPANSION
Viewpoint 02 - Proposed - Summer

| Date: 26 May 2011 | Revision: 04 |

Graphic prepared for Porters Ski Area Limited by Boffa Miskell Limited
Author: nik.kneale@boffamiskell.co.nz | Checked: DM

Figure 6

