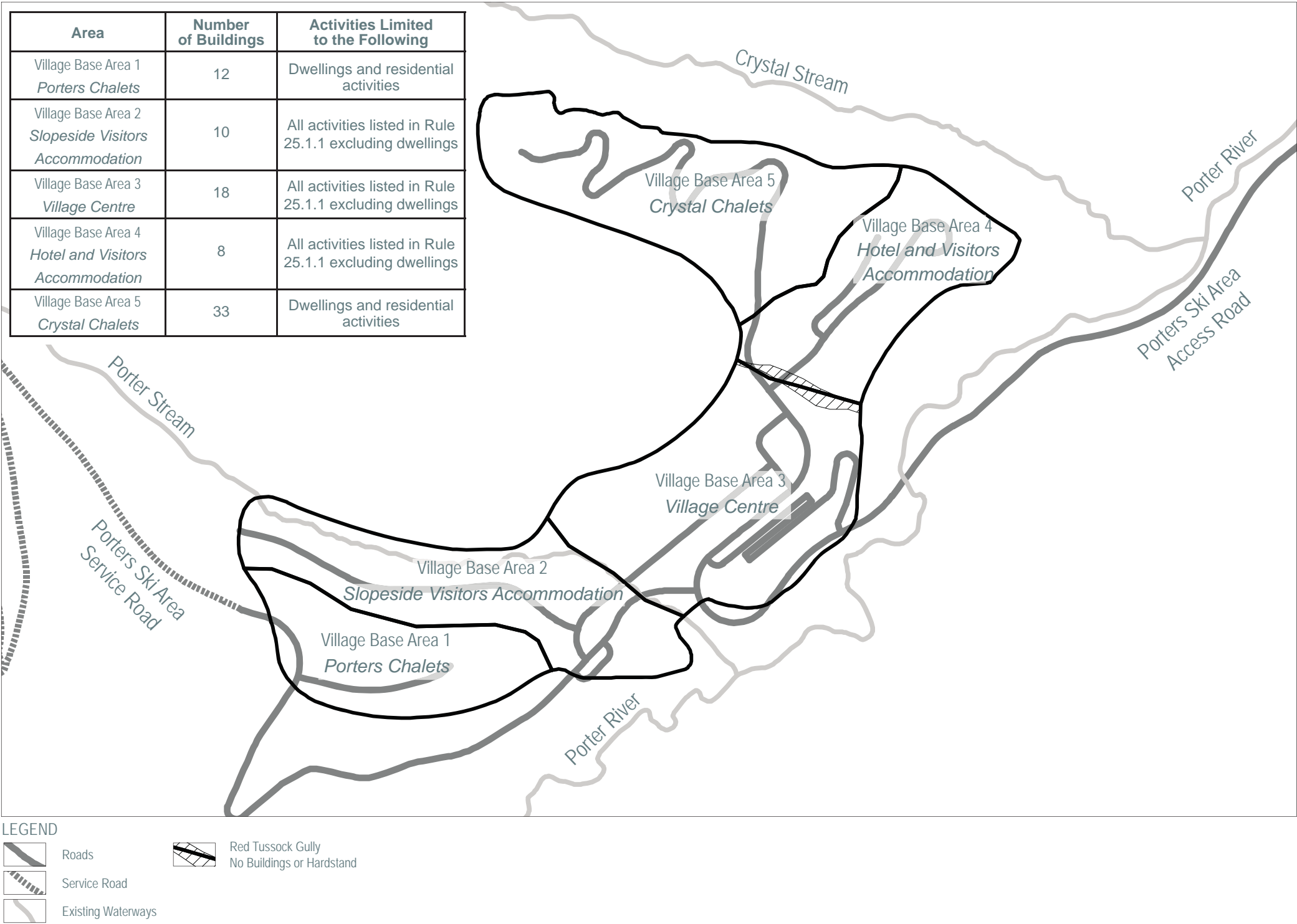
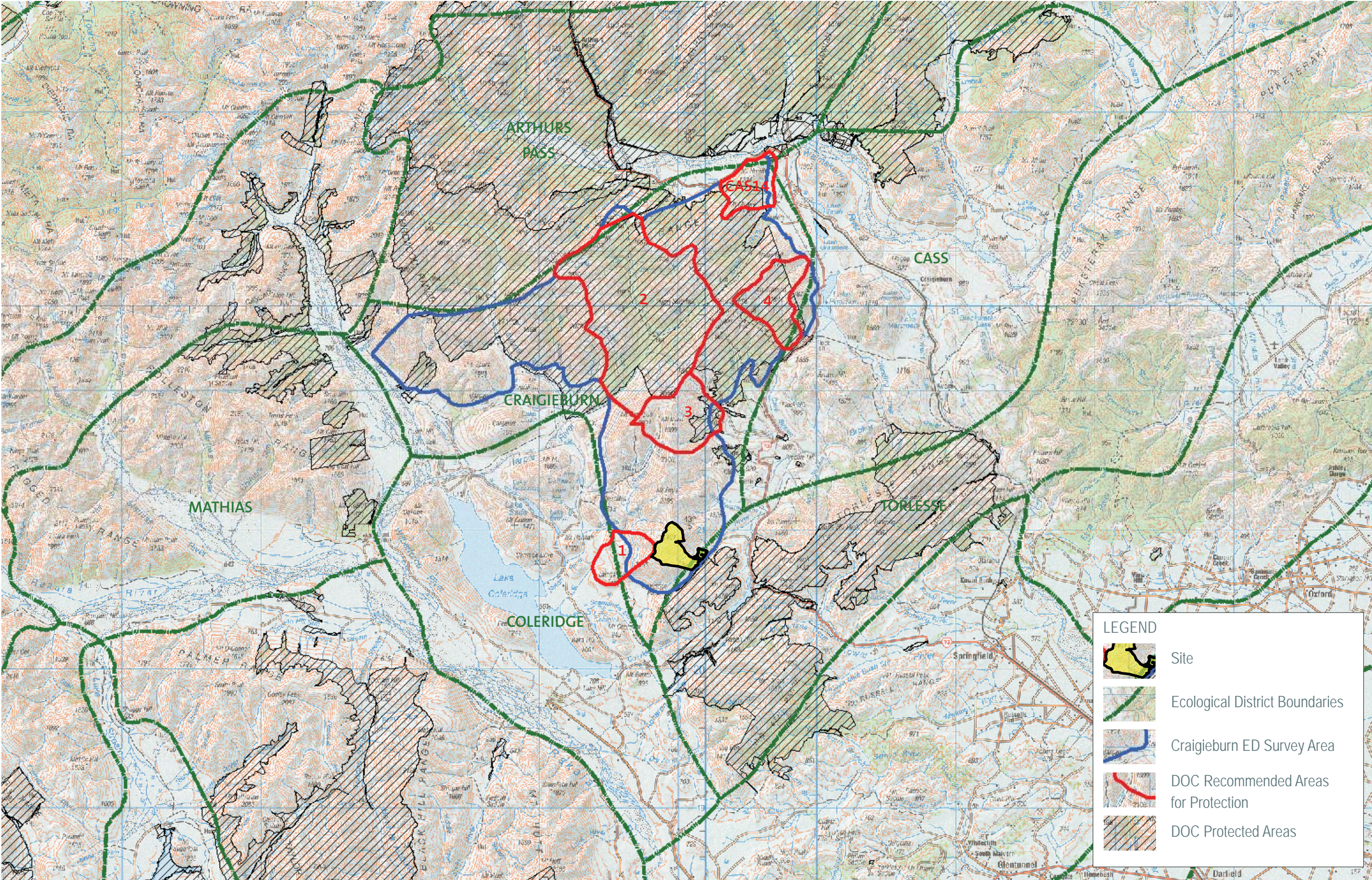


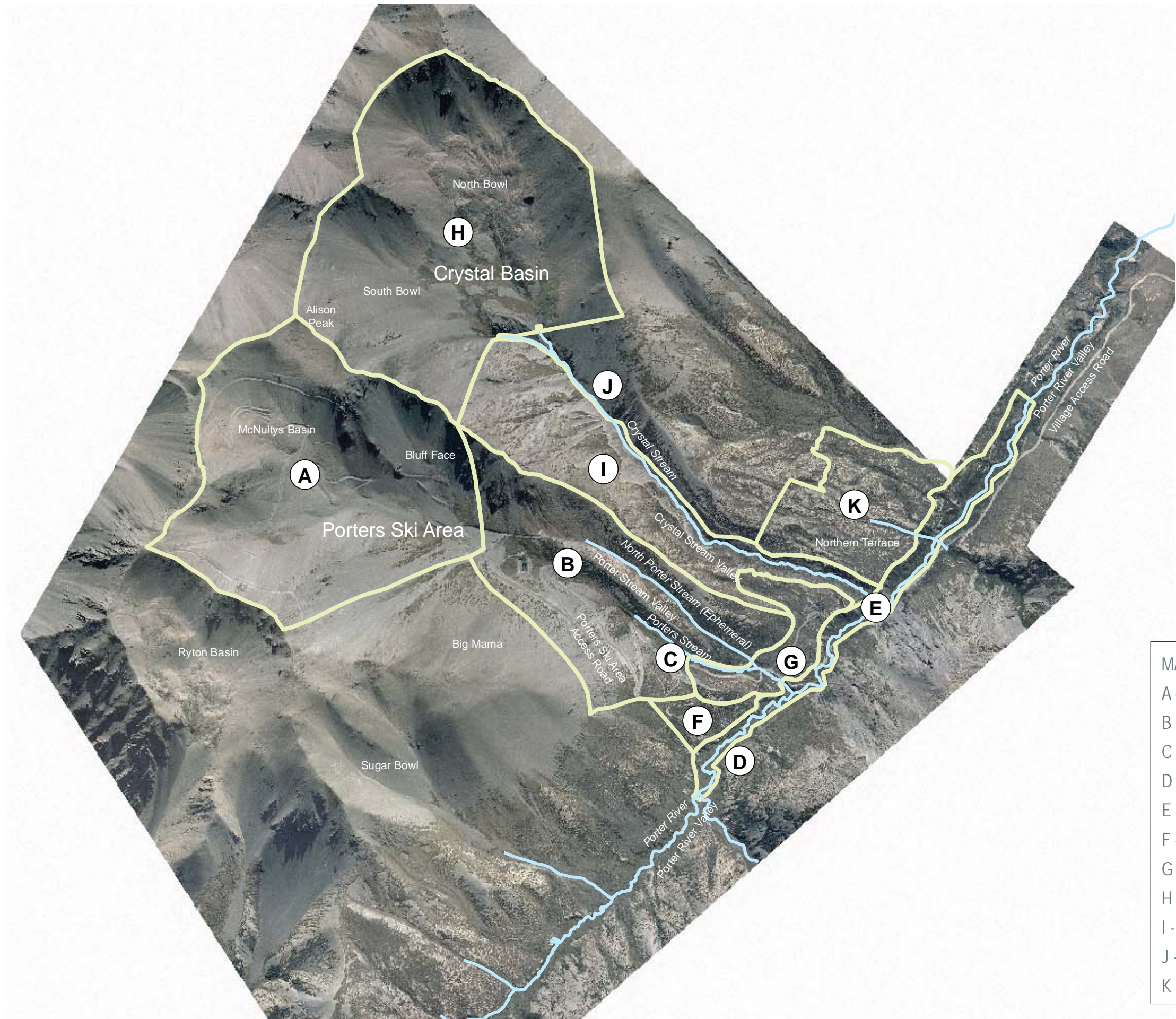
File Ref: C06110_ODP.indd





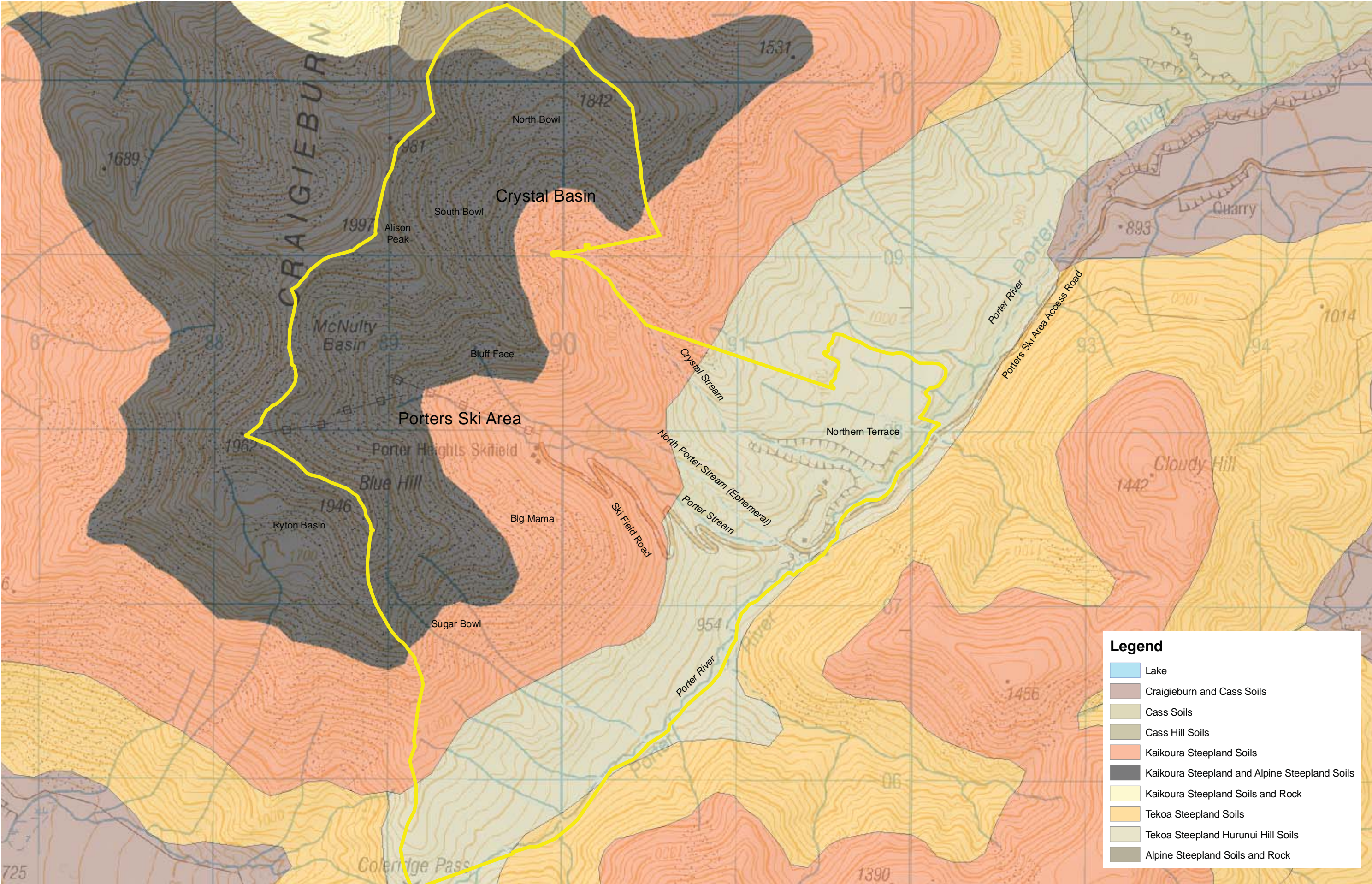


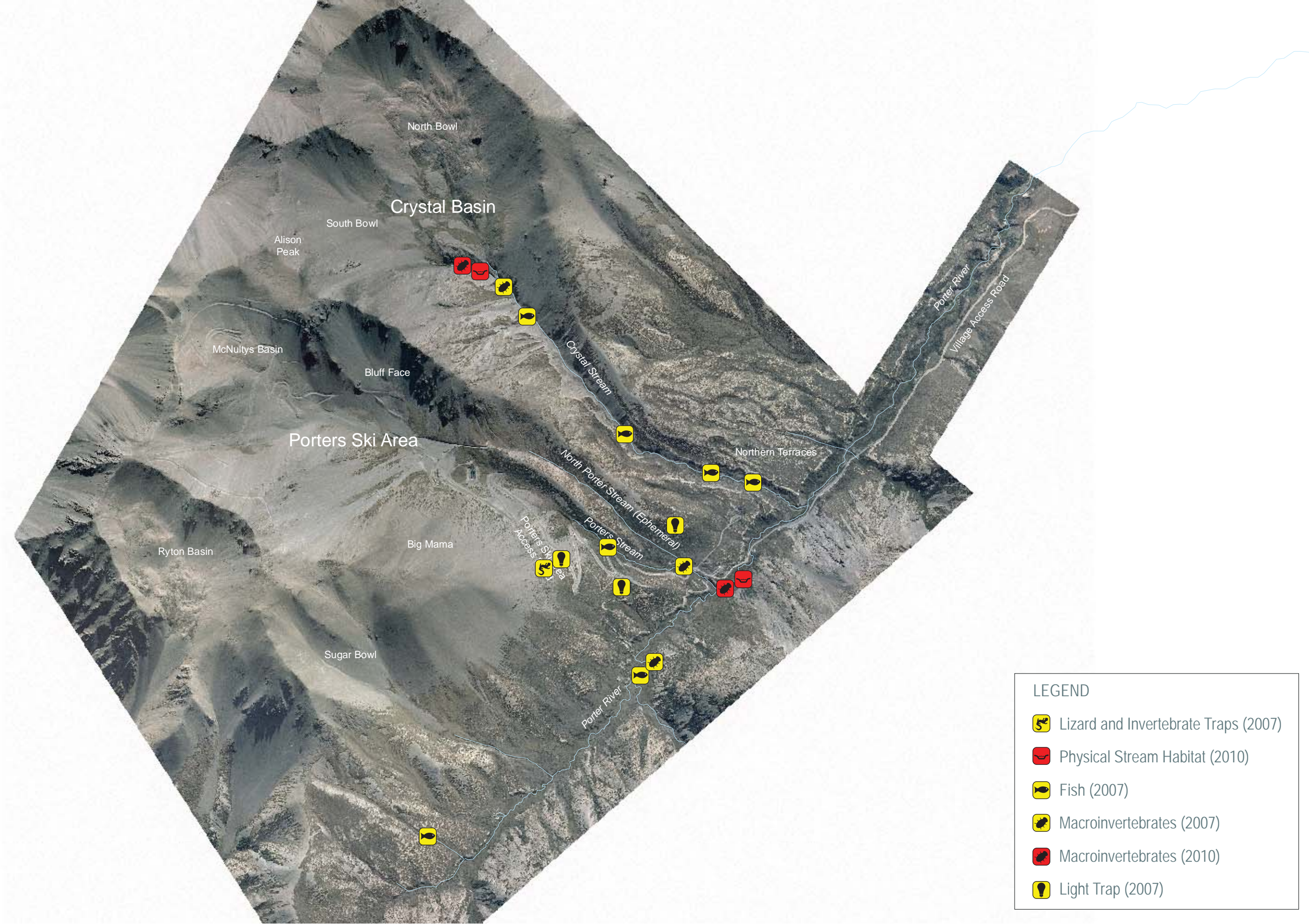


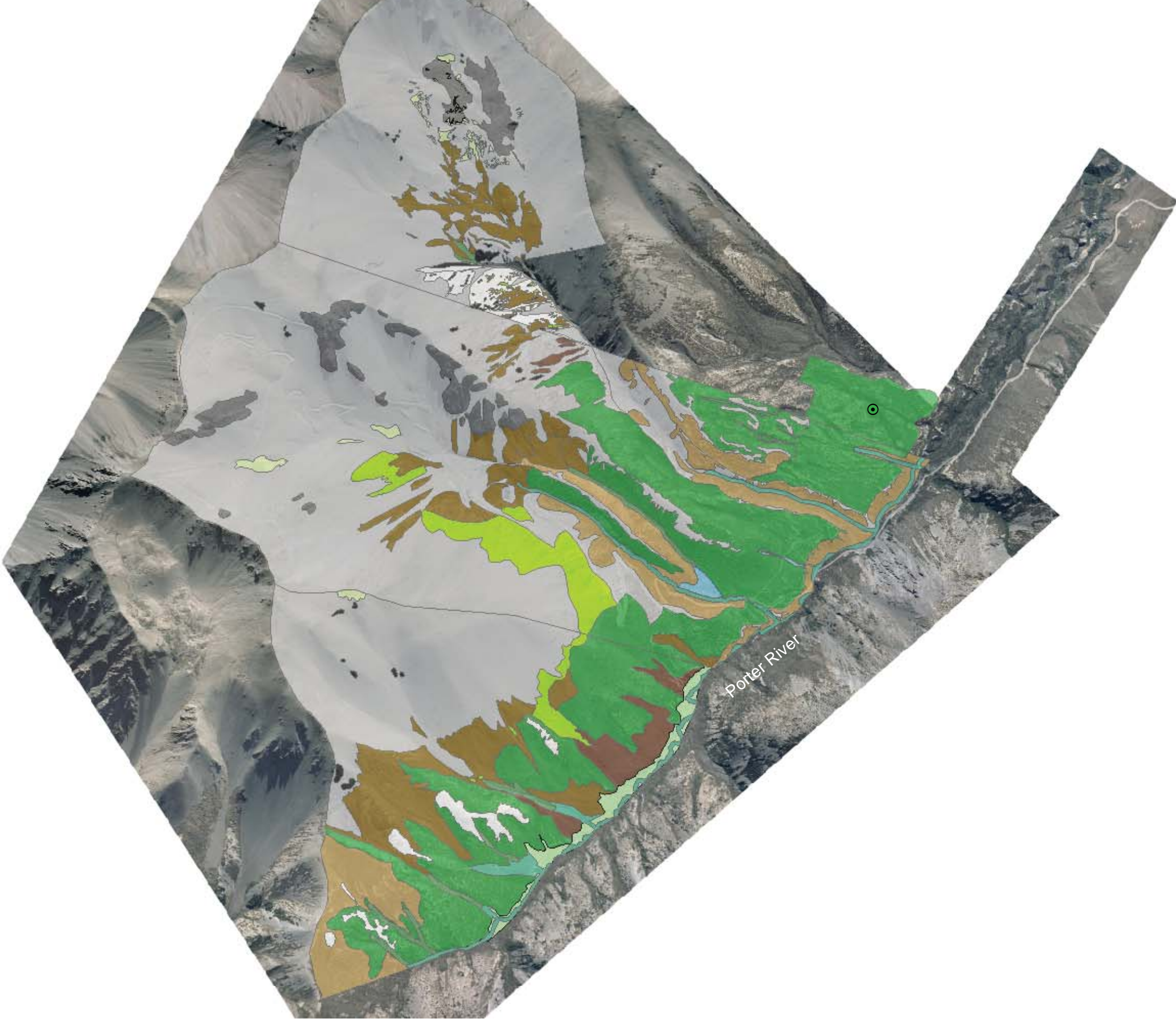


- MANAGEMENT UNITS
- A - Porters Basin
 - B - Porter Stream Valley
 - C - Porter Stream
 - D - Porter River
 - E - Porter River Valley
 - F - Porter Hill Slopes
 - G - Southern Terrace (Village)
 - H - Crystal Basin
 - I - Crystal Valley
 - J - Crystal Stream
 - K - Northern Terrace









Legend

Manuka Copse

Vegetation Types

Scree

Loose Rock / Scree Chute

Rocky Outcrop

Boulder Field

Spring Flush

Celmisia Herb Field

Tall Tussock Snow Totora

Dracophyllum Tall Tussock

Tall Tussock Dracophyllum

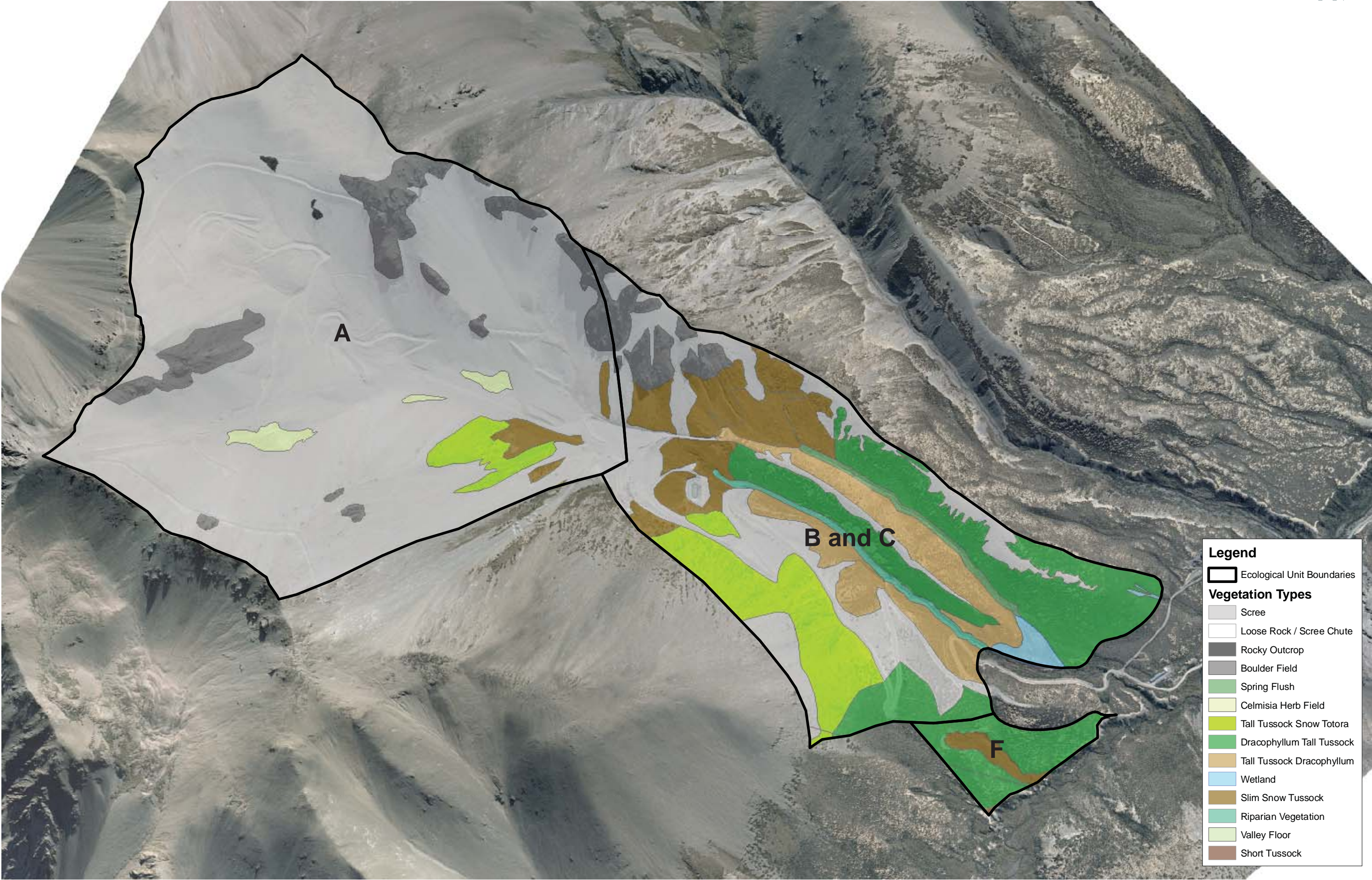
Wetland

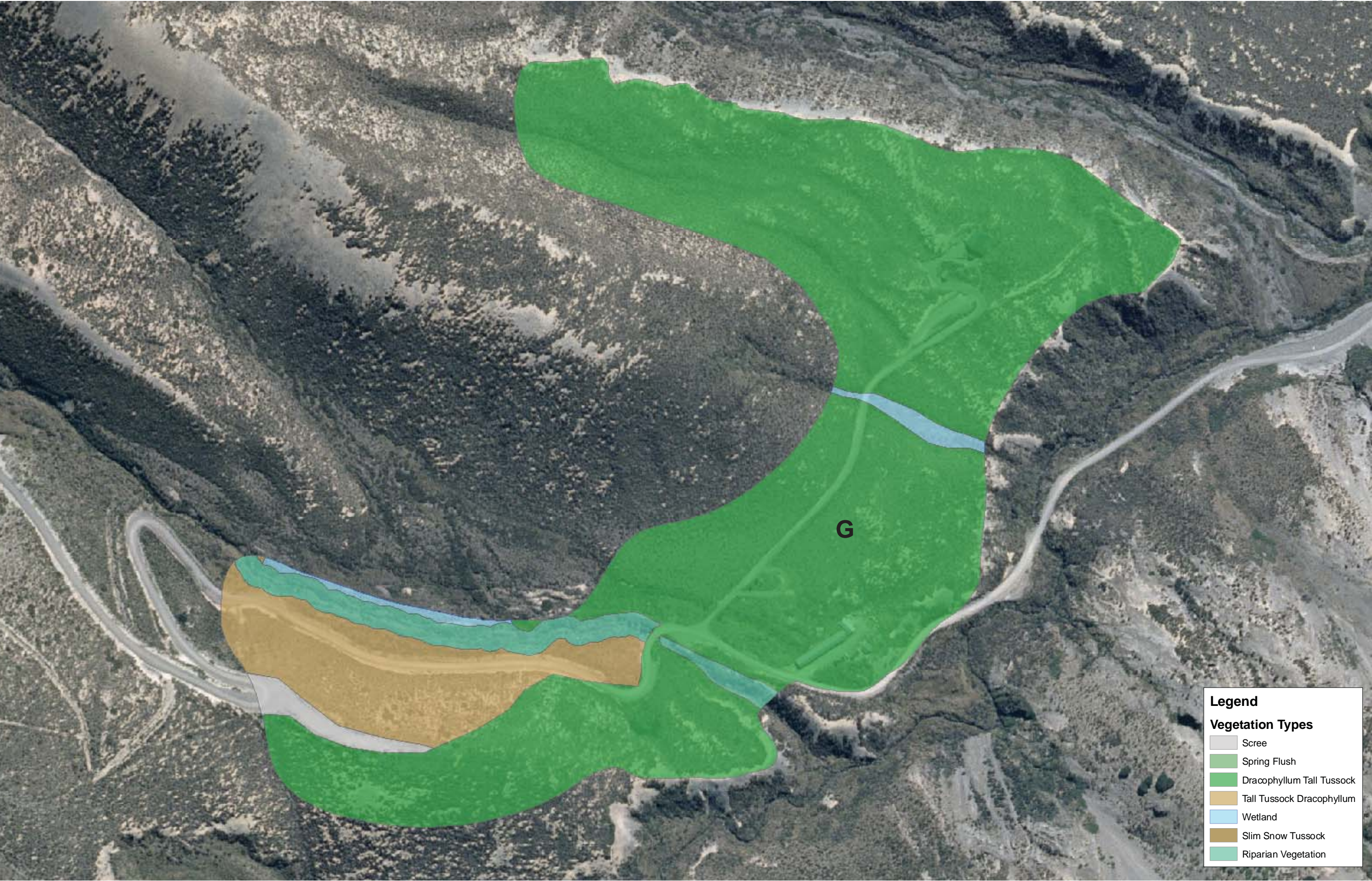
Slim Snow Tussock

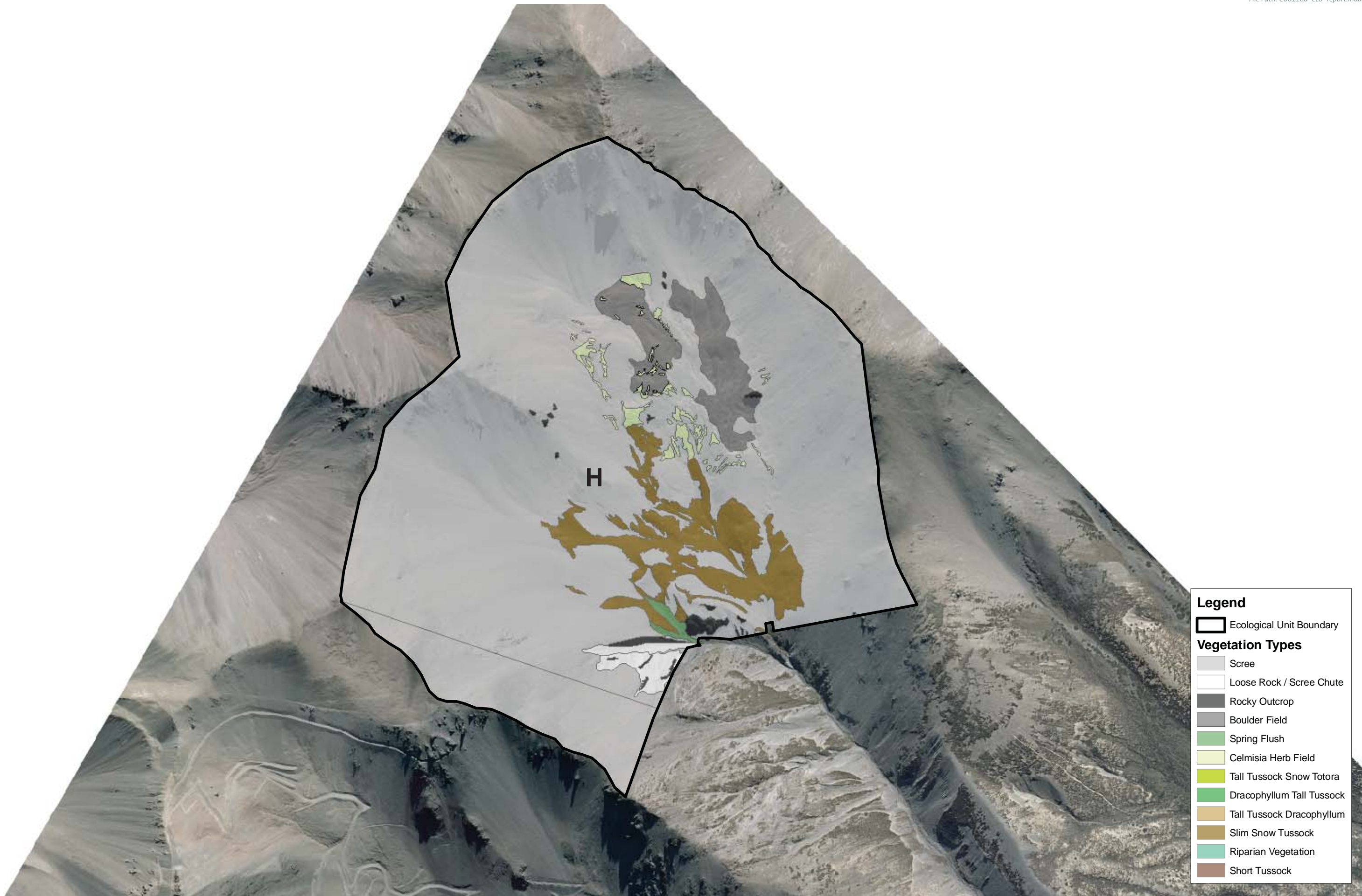
Valley Floor

Short Tussock

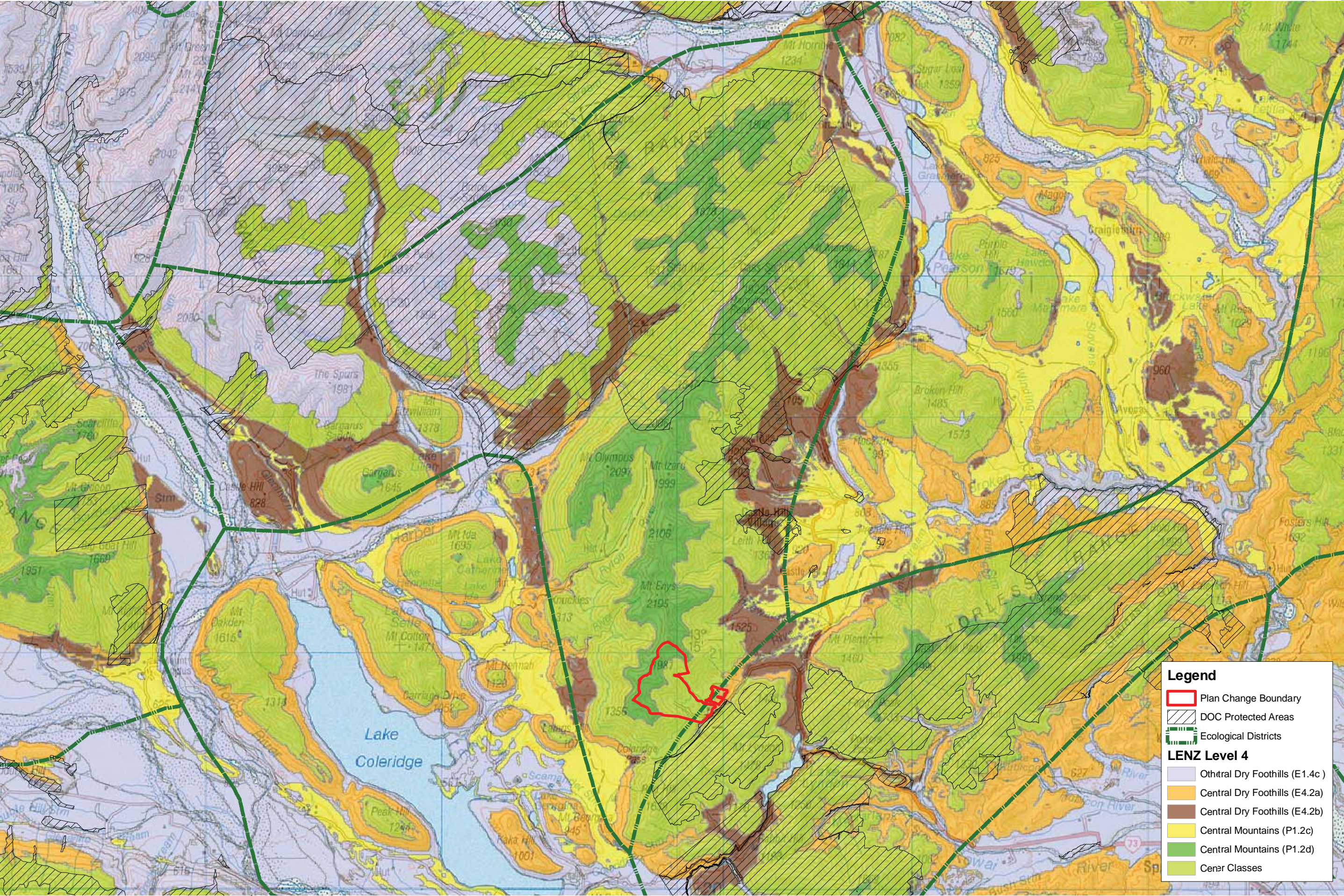
Riparian Vegetation













Legend

LENZ Threat Class

No Threat Category

LENZ Level 4

Central Dry Foothills (E1.4c)

Central Dry Foothills (E4.2a)

Central Dry Foothills (E4.2b)

Central Mountains (P1.2c)

Central Mountains (P1.2d)



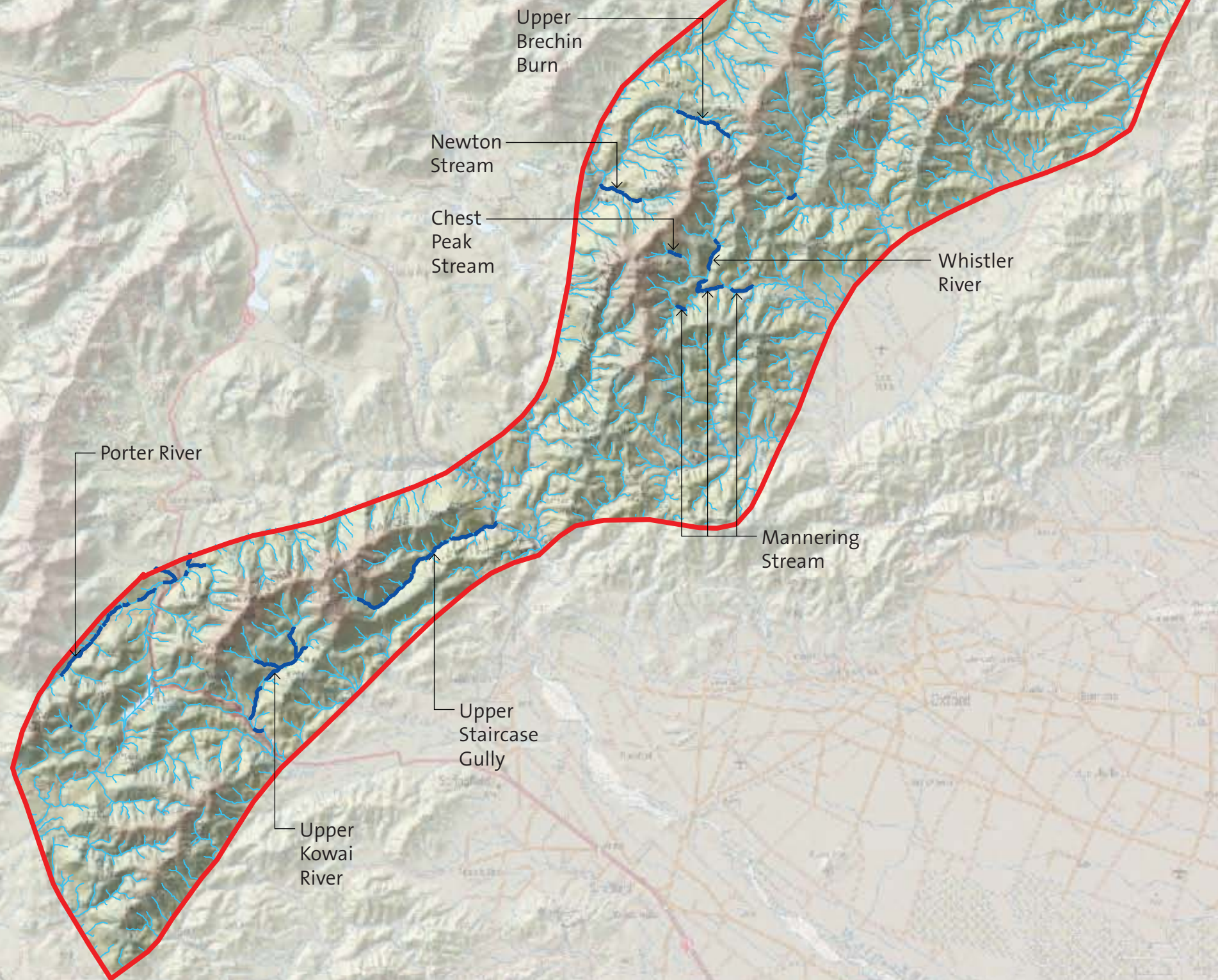
Data Sources:

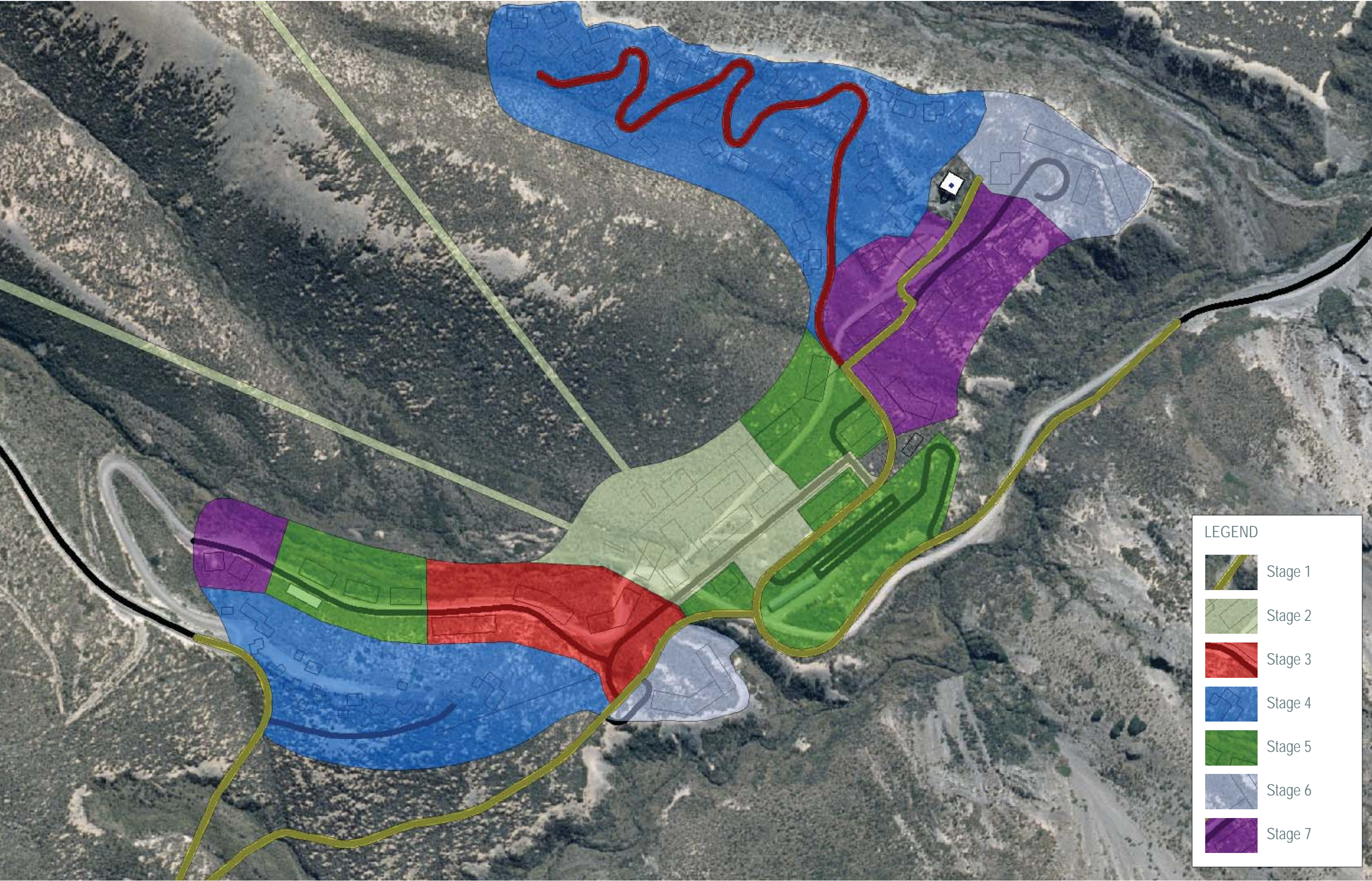
Aerial photo supplied by NZAM Ltd.
LENZ data sourced from MFE.





Source of Flow is Mountain
Geology is Hard Sedimentary
Landcover is Bare
Network Position is Middle Order
Valley Landform is High Gradient or Valley Landform is Medium Gradient





Data Sources:
Aerial photo supplied by NZAM Ltd.

0 100m
1:3,000 @ A3