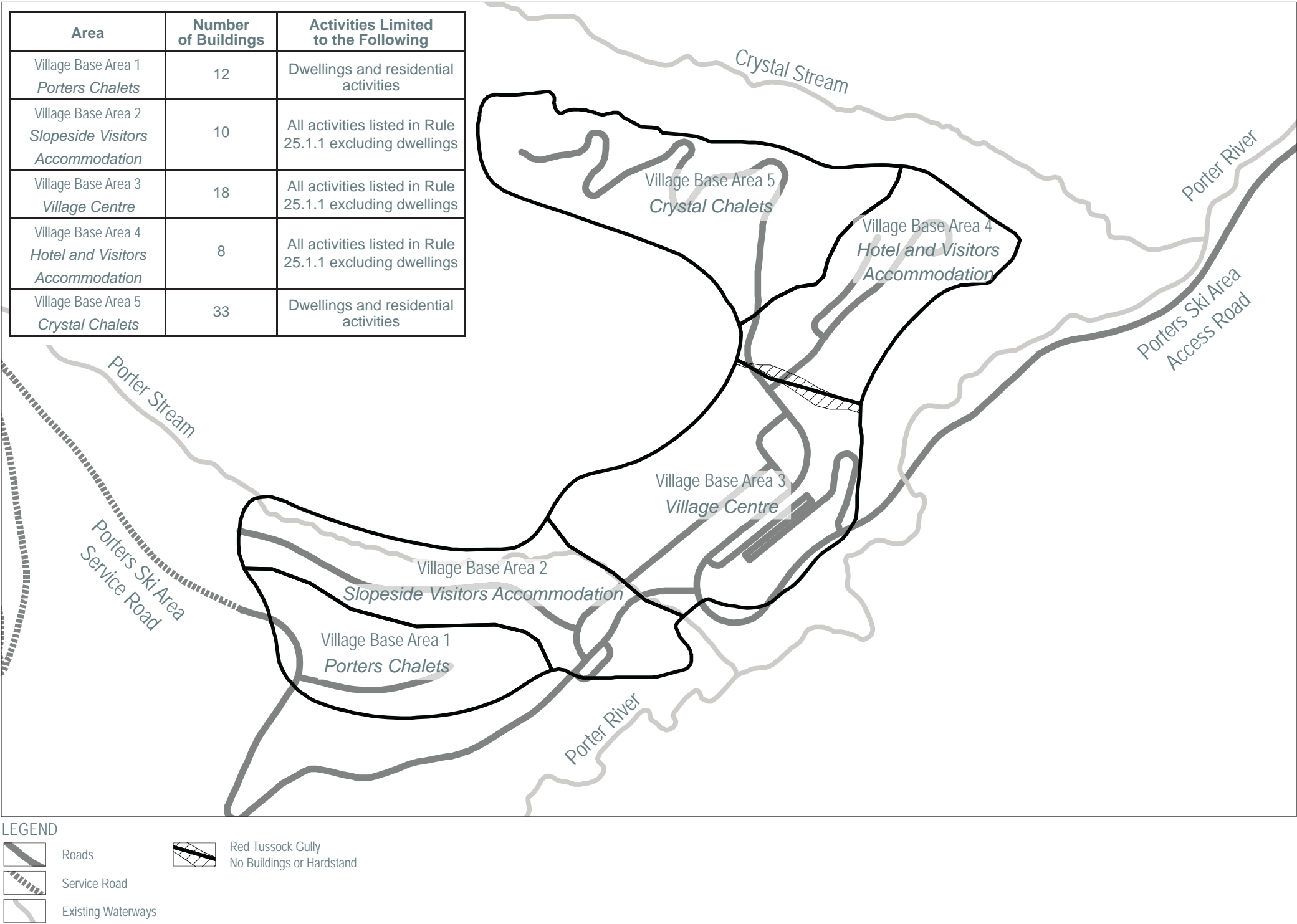


File Ref: C06110\_ODP.indd









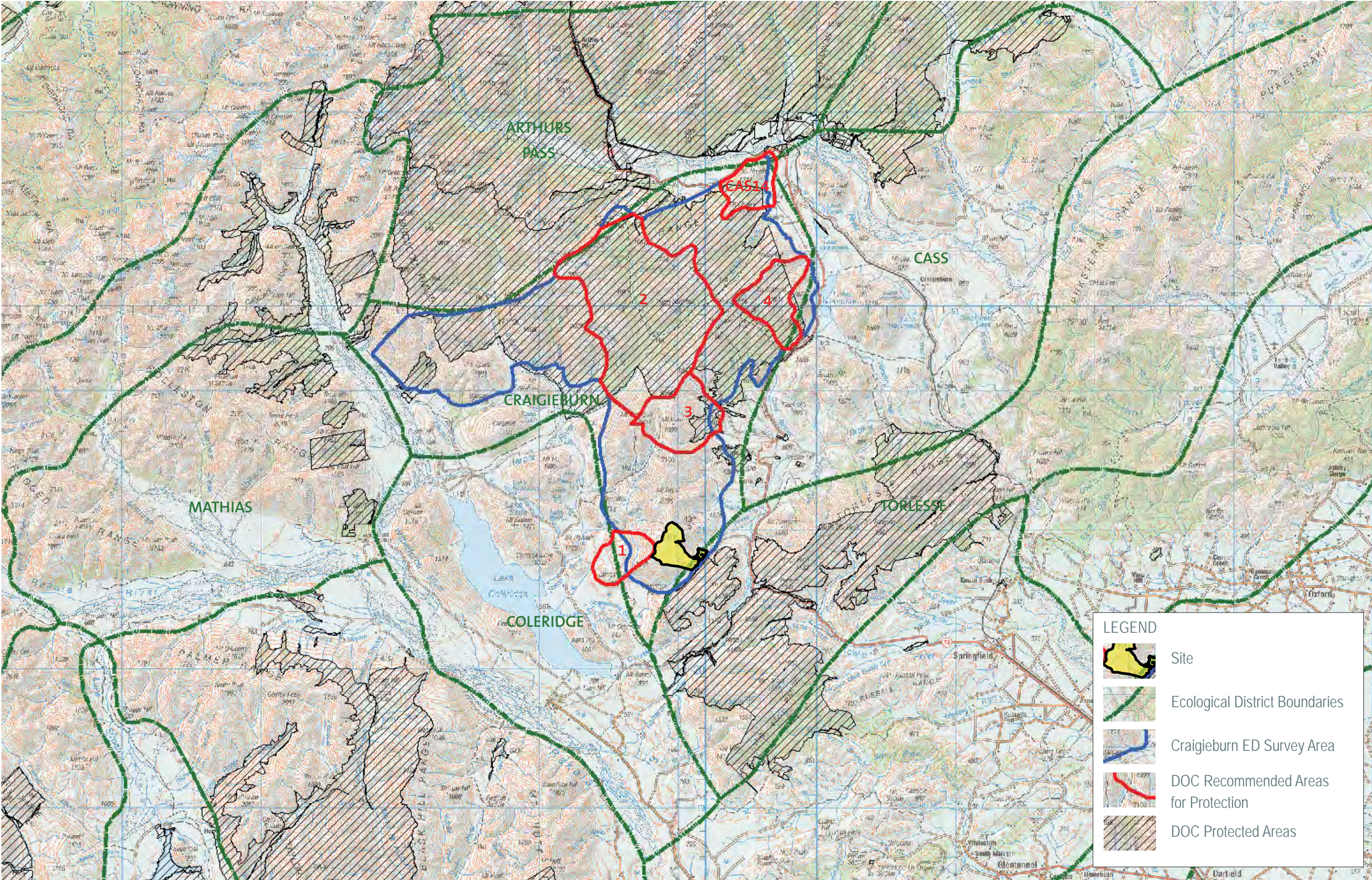


**LEGEND**

	Study Area
	Existing Ski Area Access Road
	Existing Waterways







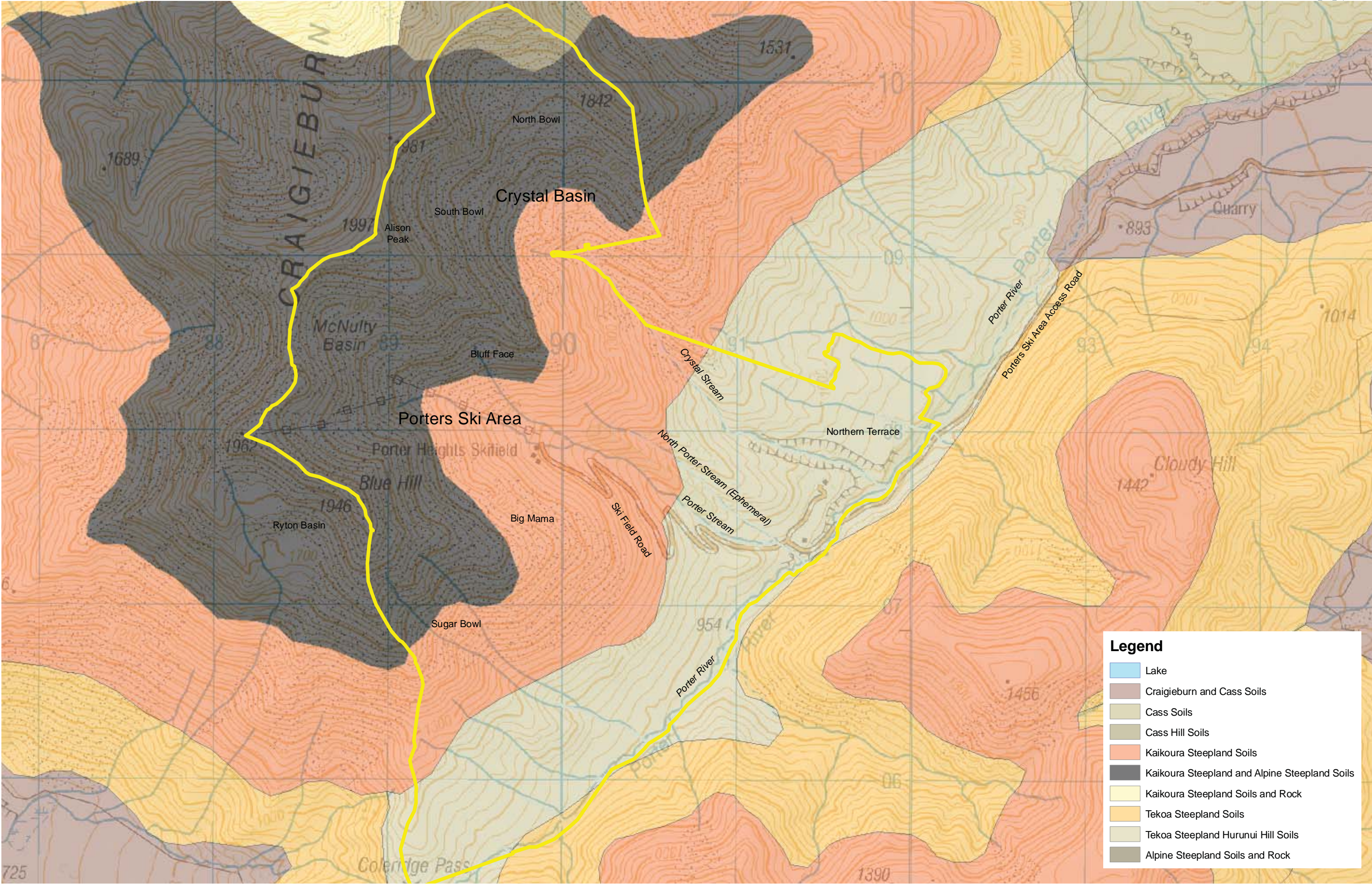




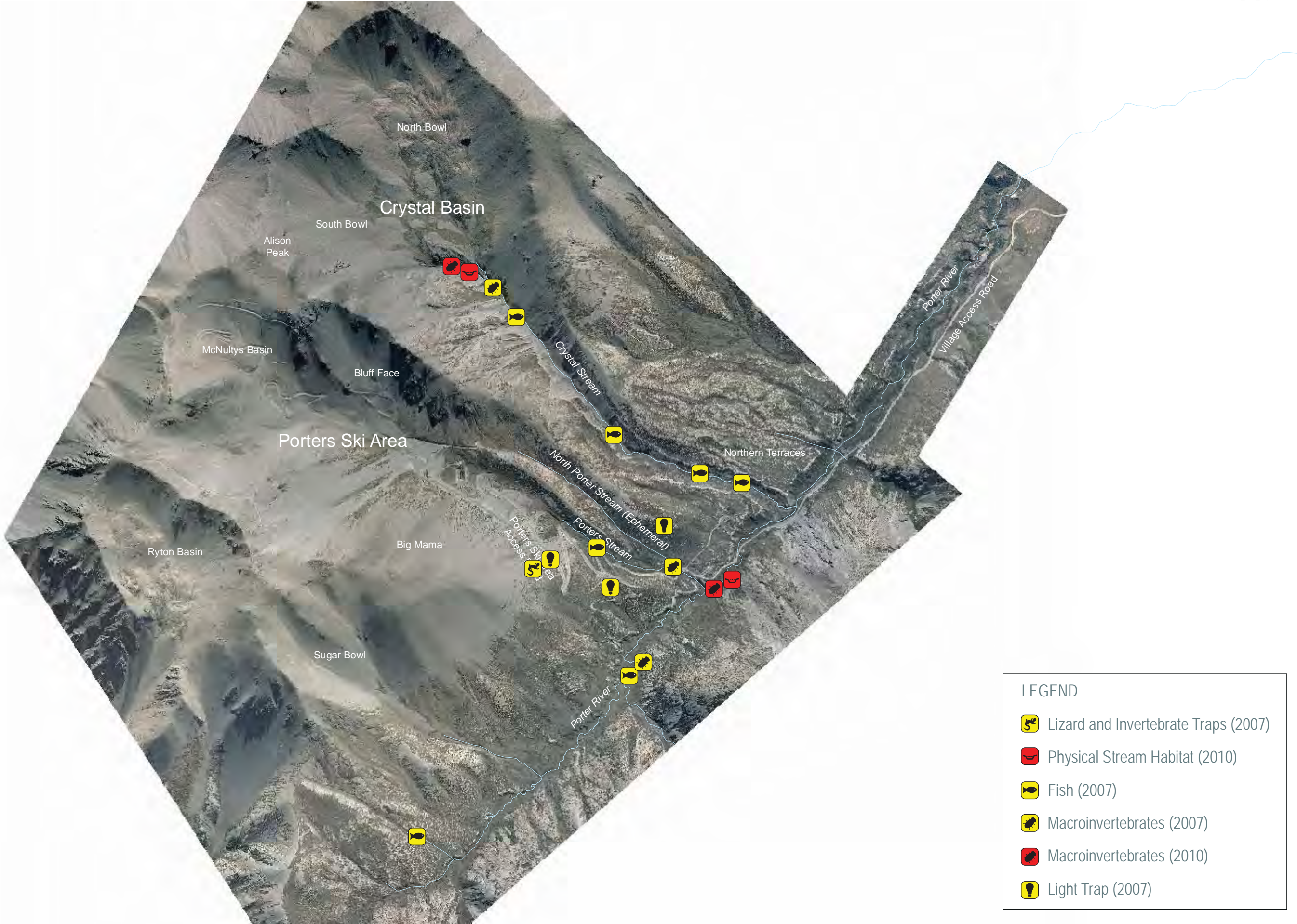
- MANAGEMENT UNITS
- A - Porters Basin
  - B - Porter Stream Valley
  - C - Porter Stream
  - D - Porter River
  - E - Porter River Valley
  - F - Porter Hill Slopes
  - G - Southern Terrace (Village)
  - H - Crystal Basin
  - I - Crystal Valley
  - J - Crystal Stream
  - K - Northern Terrace



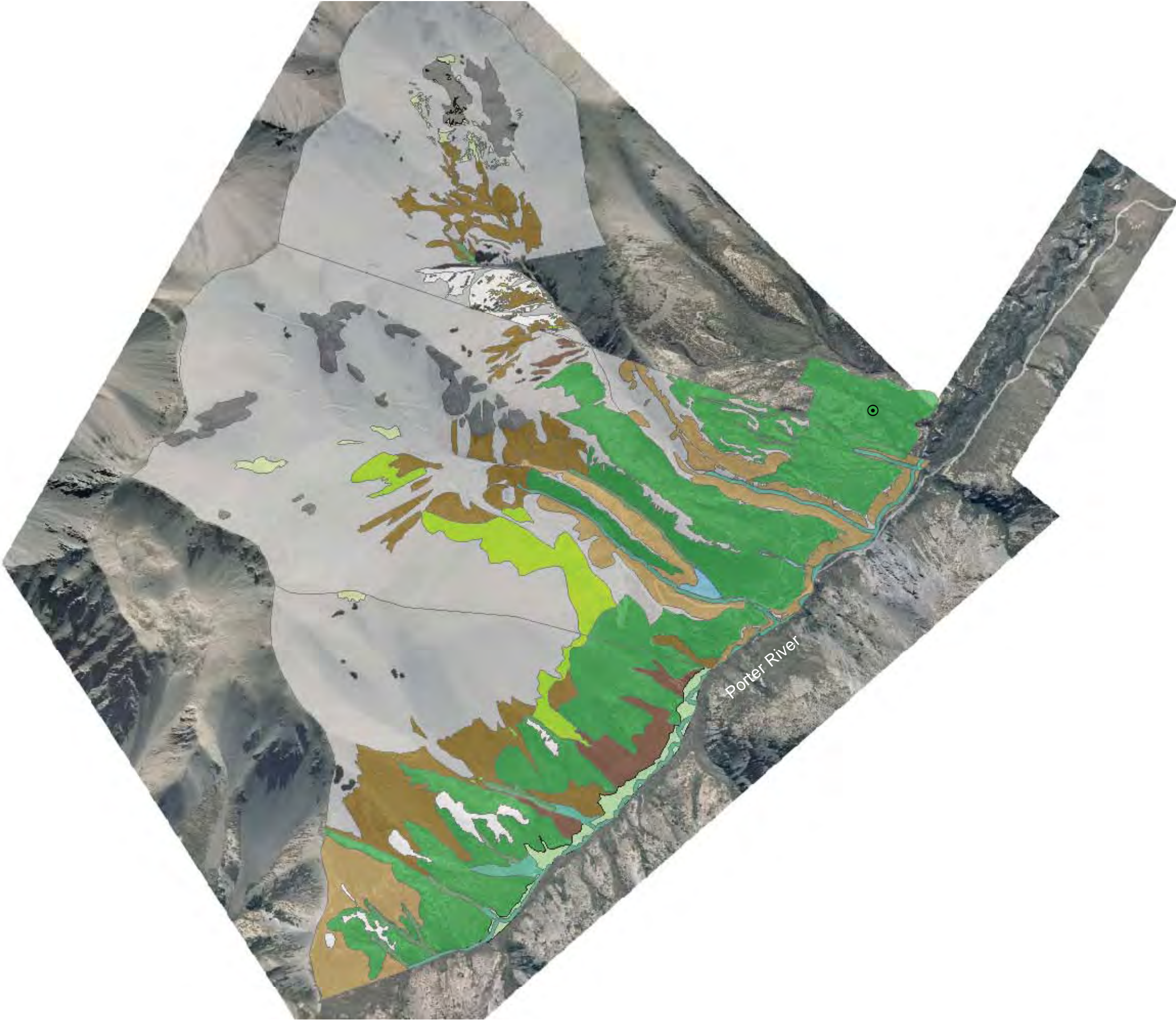












**Legend**

Manuka Copse

**Vegetation Types**

Scree

Loose Rock / Scree Chute

Rocky Outcrop

Boulder Field

Spring Flush

Celmisia Herb Field

Tall Tussock Snow Totora

Dracophyllum Tall Tussock

Tall Tussock Dracophyllum

Wetland

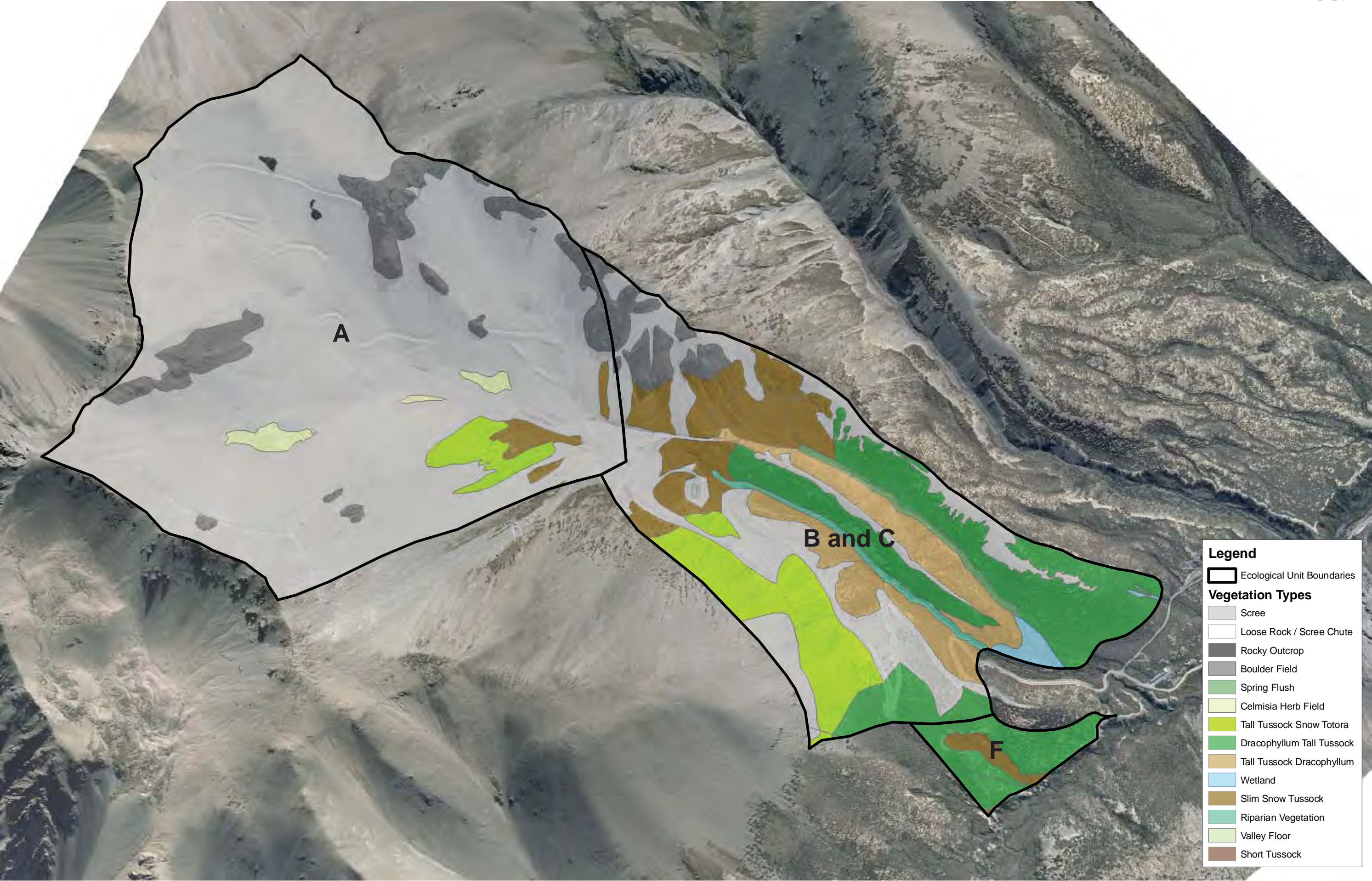
Slim Snow Tussock

Valley Floor

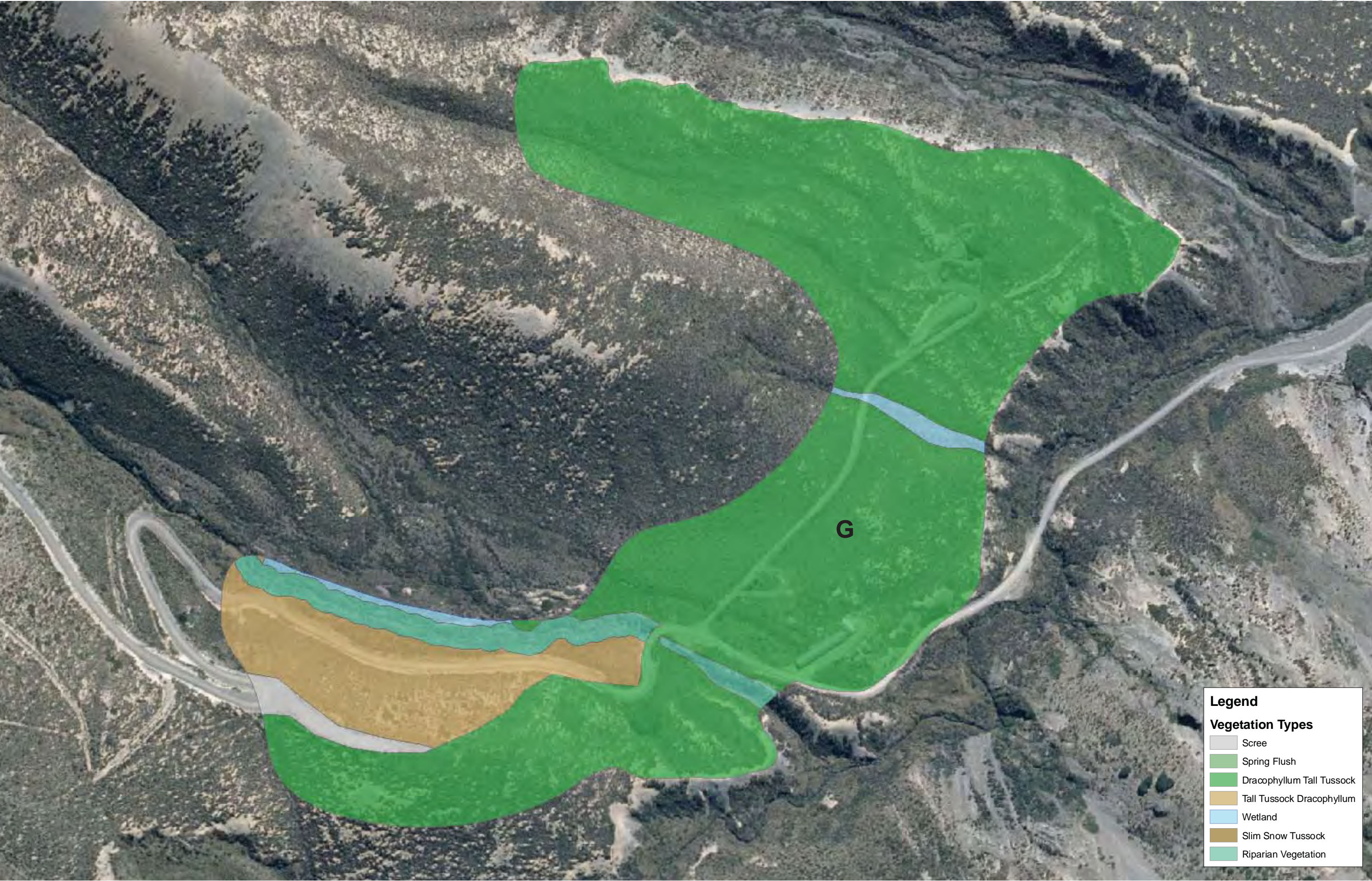
Short Tussock

Riparian Vegetation









**Legend**

**Vegetation Types**

- Scree
- Spring Flush
- Dracophyllum Tall Tussock
- Tall Tussock Dracophyllum
- Wetland
- Slim Snow Tussock
- Riparian Vegetation



Data Sources:  
Aerial photo supplied by NZAM Ltd.



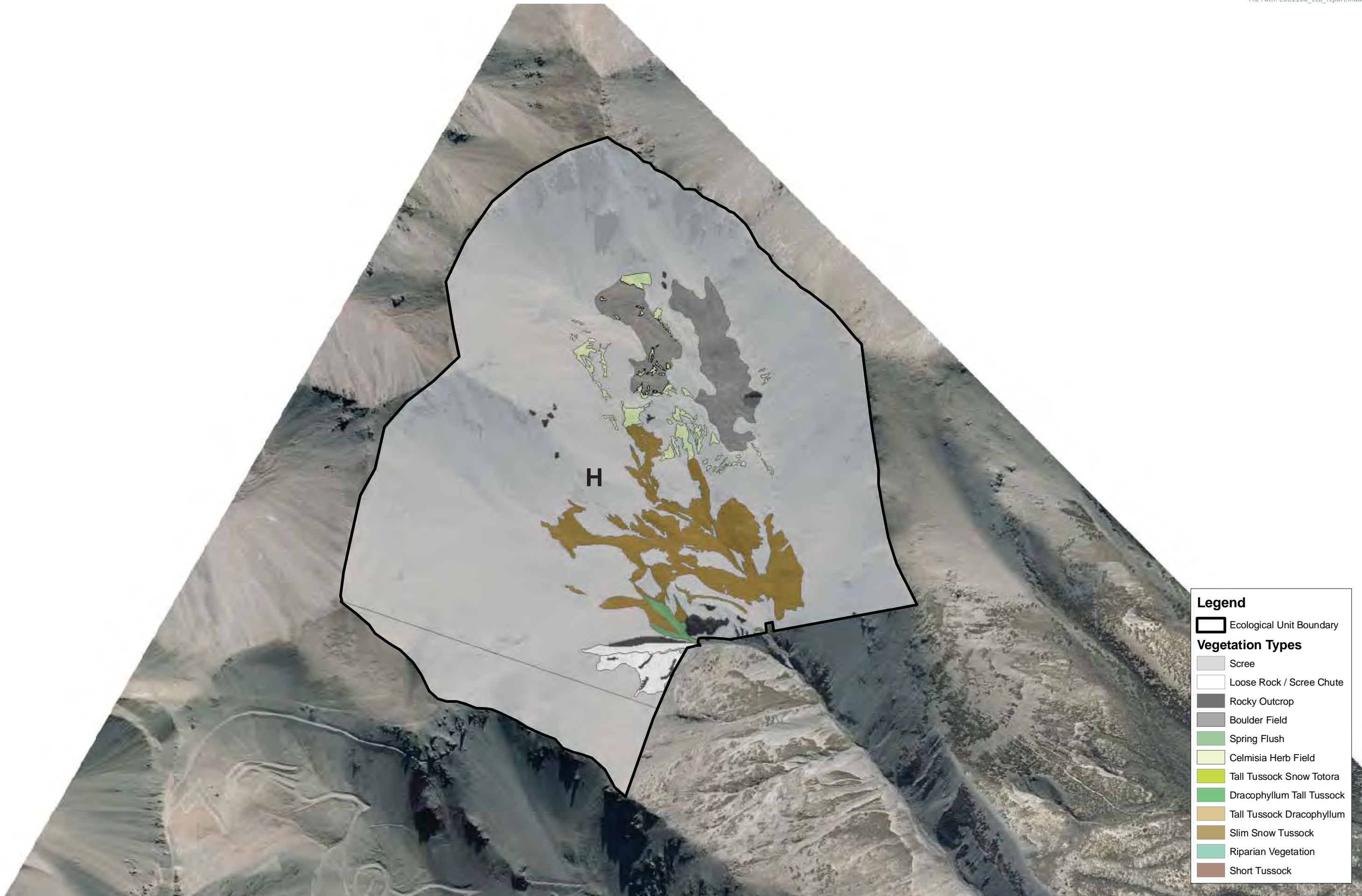
**PORTERS EXPANSION PROJECT - ECOLOGY REPORT**  
**Vegetation Types - Management Unit G**

Date: 12 July 2010

Plan prepared for Porters Ski Area Limited by Boffa Miskell Limited  
Author: gary.white@boffamiskell.co.nz | Checked: CJM

**Figure**  
**5 - 3**

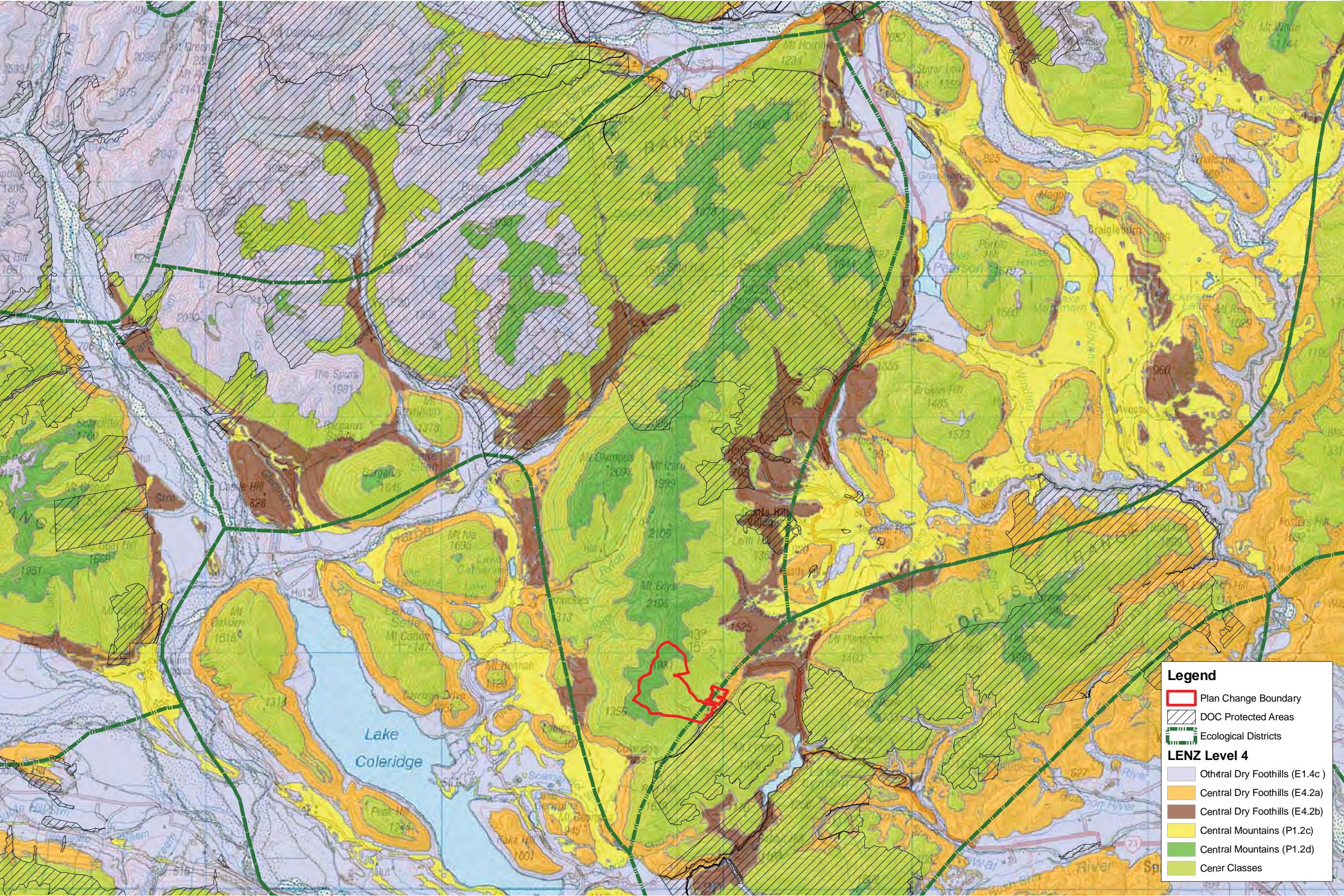



















**Legend**

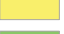
**LENZ Threat Class**


 No Threat Category


**LENZ Level 4**

 Central Dry Foothills (E1.4c )

 Central Dry Foothills (E4.2a)

 Central Dry Foothills (E4.2b)

 Central Mountains (P1.2c)

 Central Mountains (P1.2d)



Data Sources:

Aerial photo supplied by NZAM Ltd.  
LENZ data sourced from MFE.



**PORTERS EXPANSION PROJECT - ECOLOGY REPORT**  
**National LENZ Threat Classification**

Date: 12 July 2010

Plan prepared for Porters Ski Area Limited by Boffa Miskell Limited

Author: gary.white@boffamiskell.co.nz | Checked: CJM







Source of Flow is Mountain  
Geology is Hard Sedimentary  
Landcover is Bare  
Network Position is Middle Order  
Valley Landform is High Gradient or Valley Landform is Medium Gradient

