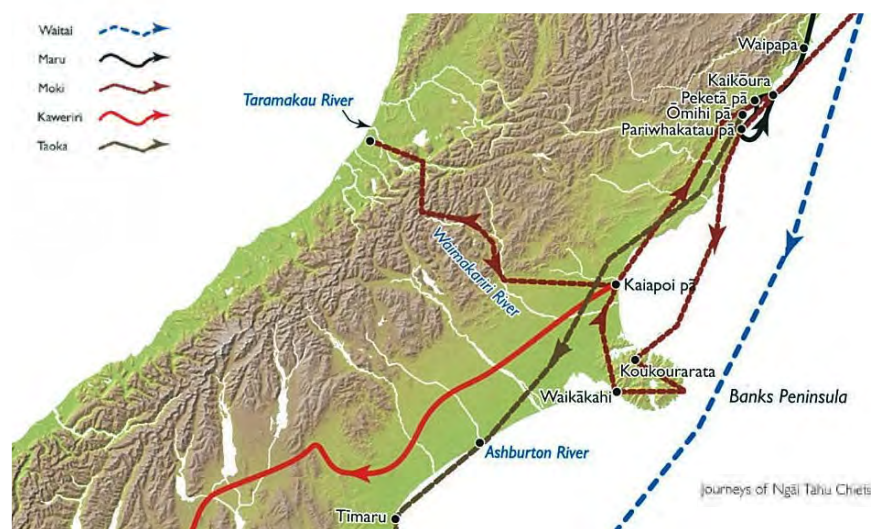
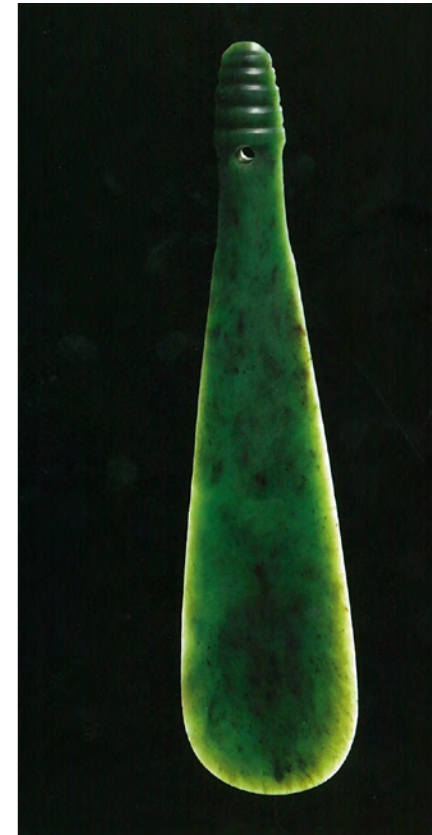


11.0 CULTURAL RESPONSE



Mountain peaks, rocky slopes, heathlands and stream courses are the most visible features of this unique, wild landscape. Less apparent are the network of ancestral trails, hunting and gathering areas, resting places and settlements utilized by generations of Tangata Whenua throughout the high country.

Development in this context must acknowledge the intrinsic value of 'untouched' natural and cultural landscapes. It must be carefully planned and carried out. It must also be consultative, observe sound conservation principles and maintain a minimal footprint.

An ongoing and open relationship with Ngai Tahu is required, so that cultural values are recognized and appropriately provided for. Aspects of significant cultural value include:

- Water – maintenance of waterways, wetlands and aquatic habitats
- Plants and animals – protection of indigenous species
- Evidence of occupation – recognition of ancestral trails, settlements and resting places, hunting and gathering areas, rock drawings and burial sites

In looking forwards to the future, this project is aimed at creating a place for everyone to utilize and enjoy in the present. To successfully achieve this also requires looking backwards to the past.

In its detailed design Porters Village must refer to the history of the area, the cultures of its people and its mountain context.

The Taonga of water, from its precipitation as rain and snow, emerging in streams and rivers, flowing down to the ocean and ascending to become moist airstreams and clouds can be considered as a continuum linking our origins and our destinies.