

Appendix 9: Geotechnical Report

6 May 2016

Reference No. 1656831_7407-001-LR-Rev0

Judith Pascoe

C/- Ms Anna MacKenzie
Avanzar Consulting Ltd
356 Memorial Avenue
Burnside
Christchurch 8053

**PROPOSED PLAN CHANGE FOR 193 AND 223 CREYKE ROAD AND 1878 TELEGRAPH ROAD,
DARFIELD**

Dear Judith

In November 2010 Golder Associates (NZ) Ltd inspected the site of the proposed development of the property illustrated in Figure 1 of our 19 November 2010 letter report to Fred Rhame of Silverstream Estates Ltd (as enclosed).

A Plan Change encompassing part of this area as shown on the enclosed plan on the corner of Creyke and Telegraph Roads, Darfield. It is proposed to build low rise residential units on this land. The geotechnical issues pertaining to this new development are likely to be similar if not exactly the same as those affecting the subdivision in 2010. We have not been made aware of any reason that warrants changing our assessment of the geotechnical issues with respect to residential development of the land.

Therefore, to the best of our knowledge based on the details disclosed to us by you our 19 November 2010 this assessment and our conclusions remain applicable to this proposed new development covered by this Plan Change.

Yours sincerely

GOLDER ASSOCIATES (NZ) LIMITED



C K Anderson
Associate - Principal Geotechnical Engineer
CPEng No. 57965

CKA/JND/jsb

Attachments: Report Limitations
Golder Associates (NZ) Limited – 19 November 2010 Letter Report

i:\projects-dynamics\2016\7407\1656831_pascoe_193creykeroad\deliverables\001 lr-proposedplanchange\rev0\1656832_7407-001-lr-rev0-proposedplanchange.docx



Report Limitations

This Report/Document has been provided by Golder Associates (NZ) Limited ("Golder") subject to the following limitations:

- i) This Report/Document has been prepared for the particular purpose outlined in Golder's proposal and no responsibility is accepted for the use of this Report/Document, in whole or in part, in other contexts or for any other purpose.
- ii) The scope and the period of Golder's Services are as described in Golder's proposal, and are subject to restrictions and limitations. Golder did not perform a complete assessment of all possible conditions or circumstances that may exist at the site referenced in the Report/Document. If a service is not expressly indicated, do not assume it has been provided. If a matter is not addressed, do not assume that any determination has been made by Golder in regards to it.
- iii) Conditions may exist which were undetectable given the limited nature of the enquiry Golder was retained to undertake with respect to the site. Variations in conditions may occur between investigatory locations, and there may be special conditions pertaining to the site which have not been revealed by the investigation and which have not therefore been taken into account in the Report/Document. Accordingly, if information in addition to that contained in this report is sought, additional studies and actions may be required.
- iv) The passage of time affects the information and assessment provided in this Report/Document. Golder's opinions are based upon information that existed at the time of the production of the Report/Document. The Services provided allowed Golder to form no more than an opinion of the actual conditions of the site at the time the site was visited and cannot be used to assess the effect of any subsequent changes in the quality of the site, or its surroundings, or any laws or regulations.
- v) Any assessments, designs and advice made in this Report/Document are based on the conditions indicated from published sources and the investigation described. No warranty is included, either express or implied, that the actual conditions will conform exactly to the assessments contained in this Report/Document.
- vi) Where data supplied by the client or other external sources, including previous site investigation data, have been used, it has been assumed that the information is correct unless otherwise stated. No responsibility is accepted by Golder for incomplete or inaccurate data supplied by others.
- vii) The Client acknowledges that Golder may have retained subconsultants affiliated with Golder to provide Services for the benefit of Golder. Golder will be fully responsible to the Client for the Services and work done by all of its subconsultants and subcontractors. The Client agrees that it will only assert claims against and seek to recover losses, damages or other liabilities from Golder and not Golder's affiliated companies. To the maximum extent allowed by law, the Client acknowledges and agrees it will not have any legal recourse, and waives any expense, loss, claim, demand, or cause of action, against Golder's affiliated companies, and their employees, officers and directors.
- viii) This Report/Document is provided for sole use by the Client and is confidential to it. No responsibility whatsoever for the contents of this Report/Document will be accepted to any person other than the Client. Any use which a third party makes of this Report/Document, or any reliance on or decisions to be made based on it, is the responsibility of such third parties. Golder accepts no responsibility for damages, if any, suffered by any third party as a result of decisions made or actions based on this Report/Document.

19 November 2010

Project No. 1078102449

Fred Rahme
Silverstream Estates Limited
160 Hussey Road
PO Box 20 383
Bishopdale
Christchurch

PROFESSIONAL SERVICES: GEOTECHNICAL ASSESSMENT OF SUITABILITY OF LAND FOR RESIDENTIAL DEVELOPMENT

Dear Fred

We understand that the Selwyn District Council requires a geotechnical assessment of your site to identify whether any potential issues exist with respect to earthquake risk, and to confirm the geotechnical suitability of the land for its “intended purpose”¹. We understand that its “intended purpose” relates to residential development.

This letter summarises the results of our geotechnical assessment of your Darfield site. The land area covered by this report is indicated by the red outline in Figure 1.

Site walkover

The site walkover was conducted on 18 November 2010, by Clive Anderson (Principal Geotechnical Engineer) and Tim McMorran (Principal Engineering Geologist).

The site is level and flat, and currently in pasture separated by pine shelterbelts.

No earthquake related ground deformation or liquefaction was observed.

Other residential dwellings are located on similar soils around and on this parcel of land.

Geology

The vast expanse of the Canterbury Plains comprises coalesced floodplains. Large parts of the plain are abandoned braided river floodplains (Forsyth et al., 2008²)

The geology in the area of the site comprises Quaternary grey to brown fan alluvium (Figure 2).

We have reviewed the subsurface logs provided. The stratigraphy in this area comprises less than half a metre of silty loam top soil underlain by dry sand bound gravel with 35 – 50% cobbles.

¹ Selwyn District Council Letter dated 20 October 2010

² Forsyth, P.J., Barrell, D.J.A., Jongens, R. (compilers) 2008: Geology of the Christchurch area. Institute of Geological and Nuclear Sciences 1:250,000 geological map 16. 1 Sheet + 67p.



We have reviewed groundwater levels in monitored Environment Canterbury wells. The nearest site is well I35/0163 at Kirwee (at a distance of approximately 7km from the site) which has a long term average depth of greater than 70 m below ground level.

The Darfield Earthquake

The M7.1 Darfield earthquake on 4 September 2010 was the result of a rupture on the previously unknown Greendale Fault. The fault location and epicentre are shown in Figure 3. The Greendale Fault was not previously recognized as an active fault because there was no surface evidence for its presence beneath the Canterbury Plains. The fault ruptured the ground surface for approximately 28 km. It has been proposed that the Greendale Fault had not had a major earthquake in the last 16,000 years because no evidence of earthquake-related geomorphic features (offset stream channels or fault scarps) had been observed on the ground surface of the Canterbury Plains around the modern fault scarp. It is therefore likely that the recurrence interval for the Greendale Fault is in the thousands of years.

The exact earthquake triggering mechanism is not known, although the theory of multiple, instantaneous fault ruptures has been postulated by scientists in the media. At this early stage however, no firm data exists on the locations of 'blind' faults (that did not rupture the surface) and it is likely to be some time before scientists publish their findings on triggering mechanisms, and associated blind faults.

The proposed residential subdivision site in Darfield is approximately 10-15 km from the area of the surface ruptured by the Greendale Fault.

There are no known faults passing through the site.

Conclusions

The near surface soils are gravelly and have suitable bearing capacity for residential dwellings.

Typically liquefaction occurs in saturated unconsolidated silts and sands, at depths of less than 10 m. The types of soils inferred at this site are sandy gravels, well above the groundwater table. Such material is expected to exhibit good earthquake performance, and is not vulnerable to liquefaction or liquefaction induced ground deformation such as subsidence or lateral spreading.

There are no known faults known faults passing through the site.

Therefore we conclude that this site is suitable on geotechnical grounds for residential development.

Yours faithfully,

GOLDER ASSOCIATES (NZ) LIMITED



Clive Anderson
Principal Geotechnical Engineer

REPORT LIMITATIONS

This Document has been provided by Golder Associates (NZ) Ltd ("Golder") subject to the following limitations:

- (i). This Document has been prepared for the particular purpose outlined in Golder's proposal and no responsibility is accepted for the use of this Document, in whole or in part, in other contexts or for any other purpose.
- (ii). The scope and the period of Golder's Services are as described in Golder's proposal, and are subject to restrictions and limitations. Golder did not perform a complete assessment of all possible conditions or circumstances that may exist at the site referenced in the Document. If a service is not expressly indicated, do not assume it has been provided. If a matter is not addressed, do not assume that any determination has been made by Golder in regards to it.
- (iii). Conditions may exist which were undetectable given the limited nature of the enquiry Golder was retained to undertake with respect to the site. Variations in conditions may occur between investigatory locations, and there may be special conditions pertaining to the site which have not been revealed by the investigation and which have not therefore been taken into account in the Document. Accordingly, additional studies and actions may be required.
- (iv). In addition, it is recognised that the passage of time affects the information and assessment provided in this Document. Golder's opinions are based upon information that existed at the time of the production of the Document. It is understood that the Services provided allowed Golder to form no more than an opinion of the actual conditions of the site at the time the site was visited and cannot be used to assess the effect of any subsequent changes in the quality of the site, or its surroundings, or any laws or regulations.
- (v). Any assessments made in this Document are based on the conditions indicated from published sources and the investigation described. No warranty is included, either express or implied, that the actual conditions will conform exactly to the assessments contained in this Document.
- (vi). Where data supplied by the client or other external sources, including previous site investigation data, have been used, it has been assumed that the information is correct unless otherwise stated. No responsibility is accepted by Golder for incomplete or inaccurate data supplied by others.
- (vii). The Client acknowledges that Golder may have retained subconsultants affiliated with Golder to provide Services for the benefit of Golder. Golder will be fully responsible to the Client for the Services and work done by all of its subconsultants and subcontractors. The Client agrees that it will only assert claims against and seek to recover losses, damages or other liabilities from Golder and not Golder's affiliated companies. To the maximum extent allowed by law, the Client acknowledges and agrees it will not have any legal recourse, and waives any expense, loss, claim, demand, or cause of action, against Golder's affiliated companies, and their employees, officers and directors.
- (viii). This Document is provided for sole use by the Client and is confidential to it and its professional advisers. No responsibility whatsoever for the contents of this Document will be accepted to any person other than the Client. Any use which a third party makes of this Document, or any reliance on or decisions to be made based on it, is the responsibility of such third parties. Golder accepts no responsibility for damages, if any, suffered by any third party as a result of decisions made or actions based on this Document.

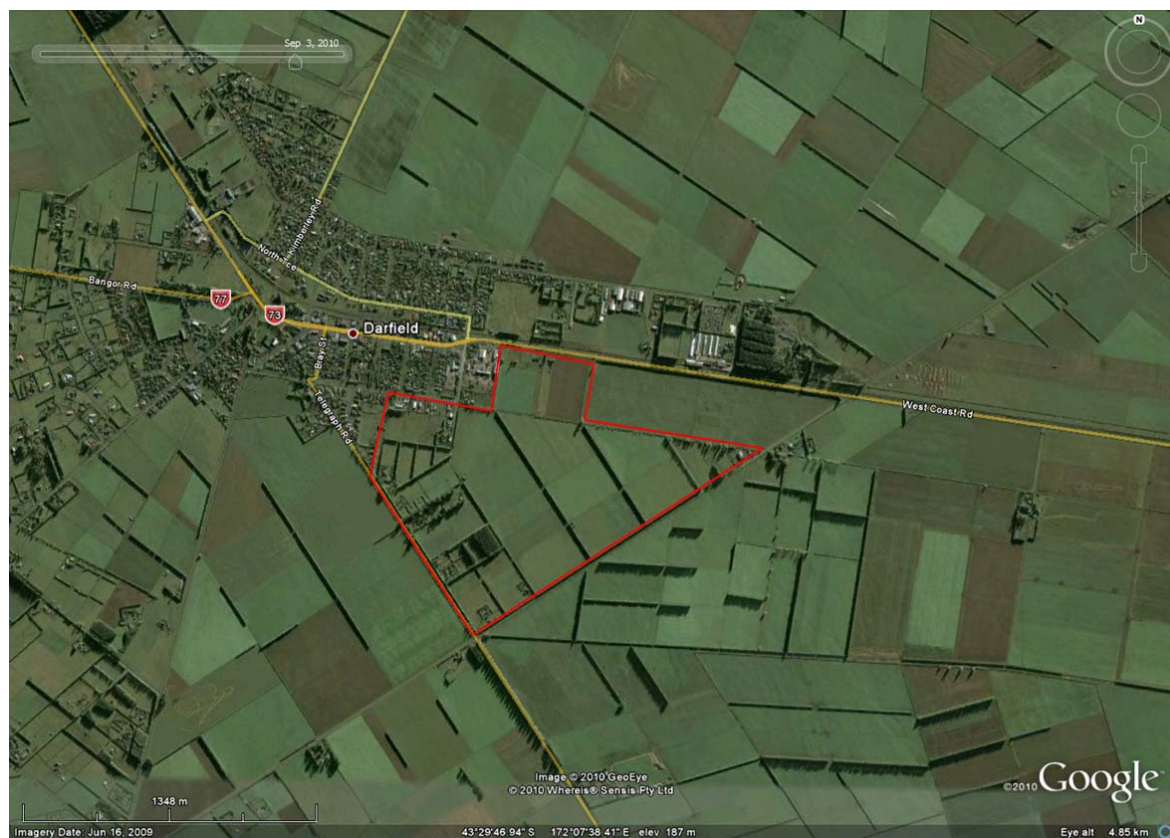


Figure 1: Site location (approximate)

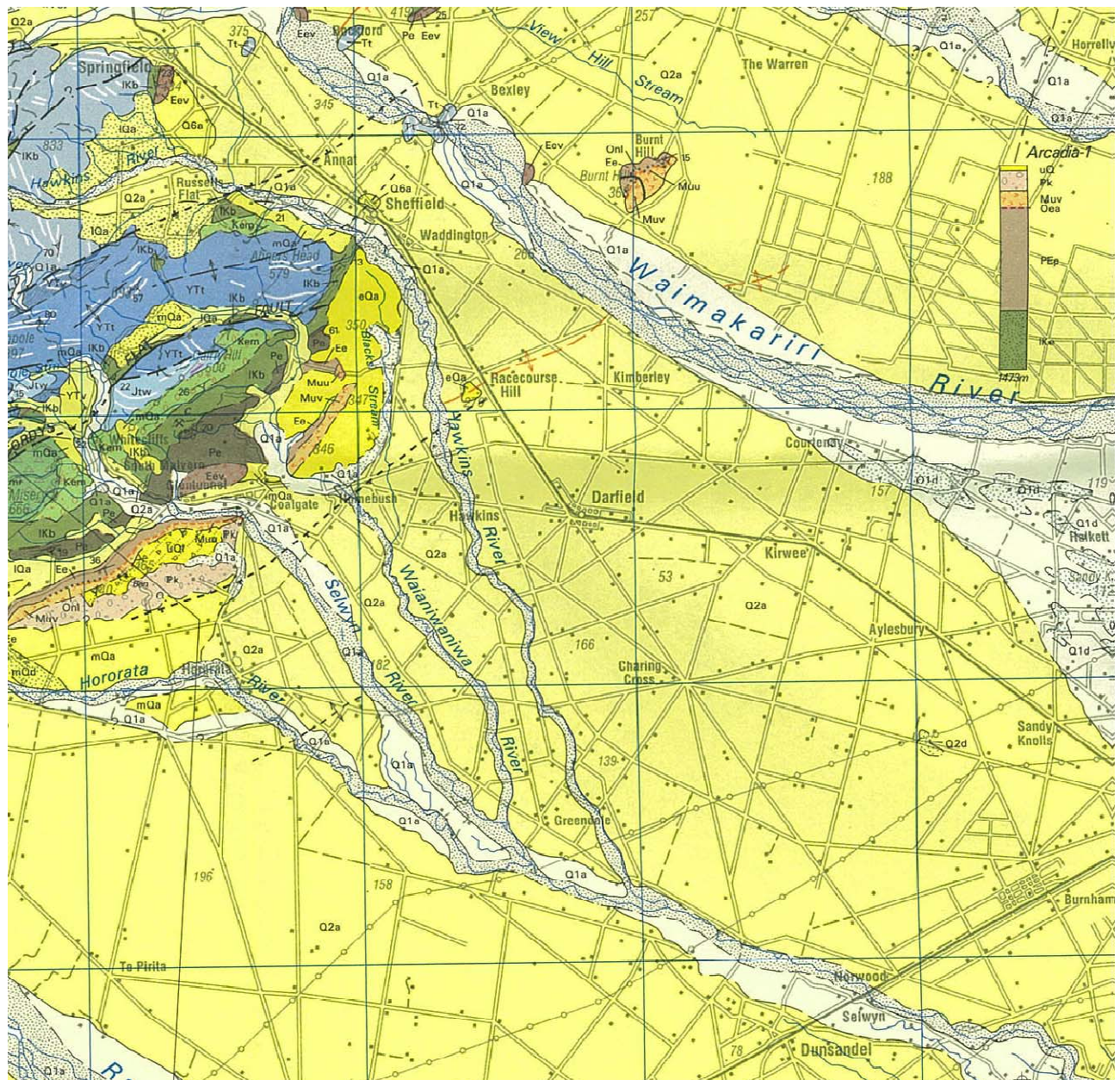


Figure 2: Geological Map of the Canterbury Plains (Forsyth et al., 2008) 'Q2a' is Quaternary grey to brown alluvial fan deposits.

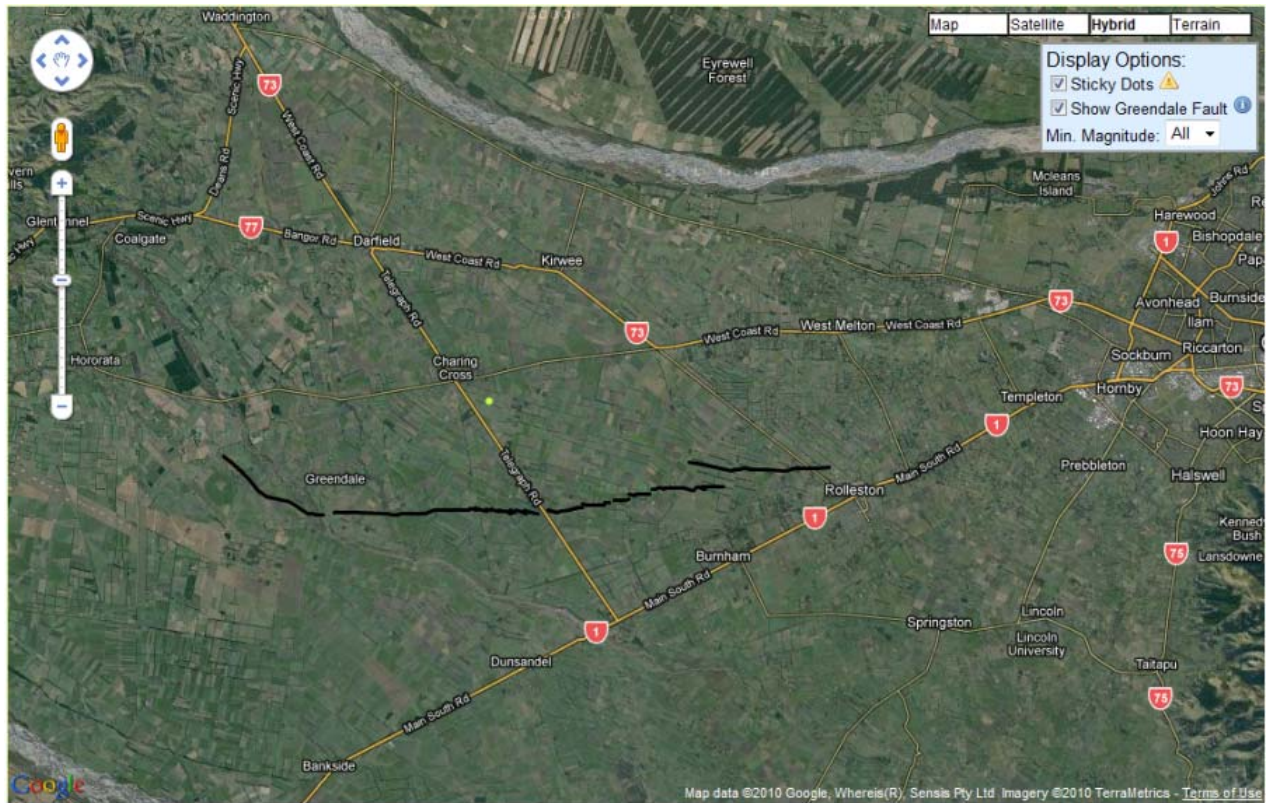


Figure 3: Epicentre of the Darfield Earthquake (epicentre represented by the light green dot southeast of Charing Cross. The Greendale fault trace is indicated by the black line). Image sourced from <http://www.christchurchquakemap.co.nz/>