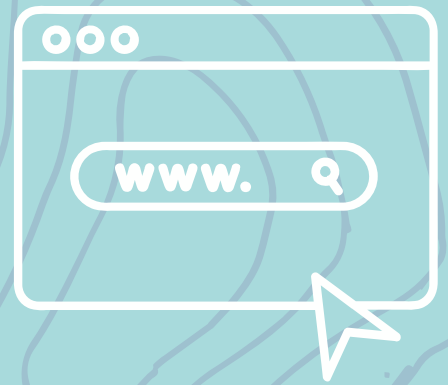


How to view the Variation to the Proposed District Plan

From the ePlan landing page select 'Read Entire Plan'

1



Select to view variations on or post consultation

 Select

Sections marked with a blue dashed line are affected by a Variation

2

From the left hand menu look for this box and click 'Select'

Select 'Variation 1'

3



4

Select the button at the top of the screen to see a tracked change version of Variation 1

 Show Variation changes

Note

Text highlighted in green has been added through Variation 1, text highlighted in red has been deleted

added

~~deleted~~