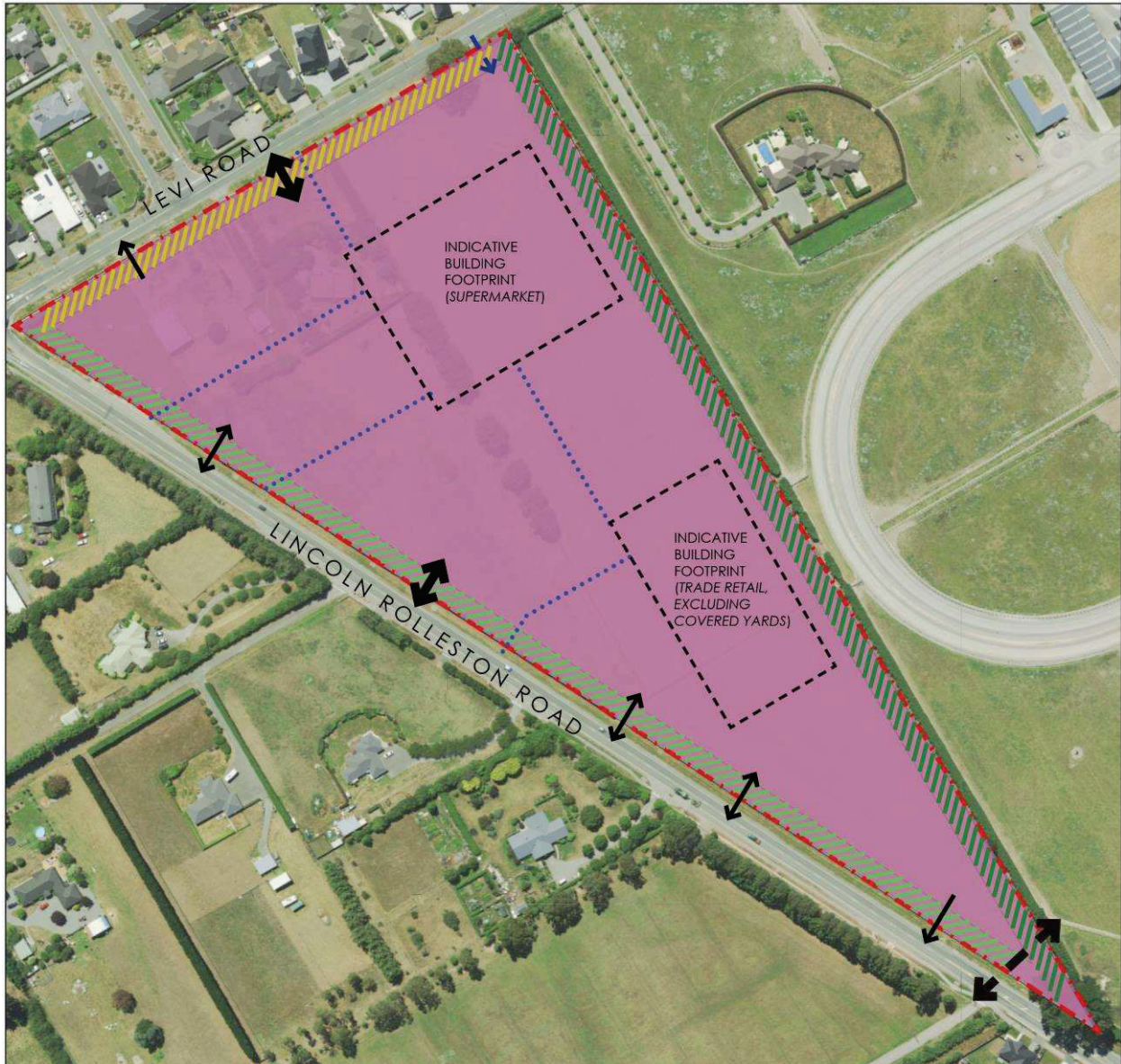


# Appendix F – Proposed Outline Development Plan

## ROLLESTON 1 DEVELOPMENT AREA



	PRINCIPAL ENTRANCE		INDICATIVE PEDESTRIAN CONNECTIVITY		LFRZ (PRECz)
	SUPPLEMENTARY ENTRANCE		3M (MINIMUM) LANDSCAPE TREATMENT		SITE BOUNDARY
	SUPERMARKET SERVICE ENTRANCE ONLY		5M (MINIMUM) LANDSCAPE TREATMENT		
	FUTURE PRIMARY ROAD		10M LANDSCAPE TREATMENT		

N

### LANDSCAPING

- Landscape planting shall be established in the landscape planting areas prior to the erection of any principal building on any site subject to DEV-RO1
- Tree planting within the car park areas of PRECz shall be at a ratio of one tree per five car parks
- All trees to be planted within the car parking areas (excluding road frontage trees) shall be planted with a minimum uncompacted available soil volume based on the expected future size of the tree, as follows:
  - (i) Small tree (<7m in height): 5-15m³
  - (ii) Medium tree (7-15m in height): 20-40m³
  - (iii) Large tree (>15m in height): 40m³
- Uncompacted available soil volume for the purpose of this rule means the volume of soil excluding aggregate should a structural soil mix be used.
- The landscaping shall consist of those species listed in APP4 along with the following additional species:

#### GROUP A

*Alnus jorullensis* - Mexican Alder,  
*Carpinus betulus* - Hornbeam  
*Liriodendron tulipifera* 'fastigiata' - Upright Tulip Tree  
*Platanus orientalis* 'Autumn Glory' - Oriental Plane  
*Quercus coccinea* - Scarlet Oak

#### GROUP C

*Coprosma rugosa* 'Lobster'  
*Corokia* 'Geentys Green'  
*Pseudopanax lessonii* - Houpara  
*Pseudowintera colorata* - Horopito

#### GROUP D

*Apodasmia similis* - Oioi  
*Arthropodium cirratum* - Rengarenga Lily  
*Astelia nervosa* 'Westland'  
*Carex testacea* - Speckled Sedge  
*Carex virgata* - Pukio  
*Chionochloa flavicans* - Snow Tussock,  
*Chionochloa rubra* Red Tussock  
*Brachyglottis greyii* -  
*Dianella revoluta* 'Little Rev'  
*Dianella tasmanica* 'Tas Red'  
*Echinacea* 'White Swan'

*Eleocharis acuta* - Sharp Spike Sedge  
*Gaura* - Bee Blossom  
*Muehlenbeckia axillaris* - Creeping Pohuehue