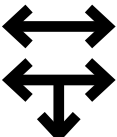
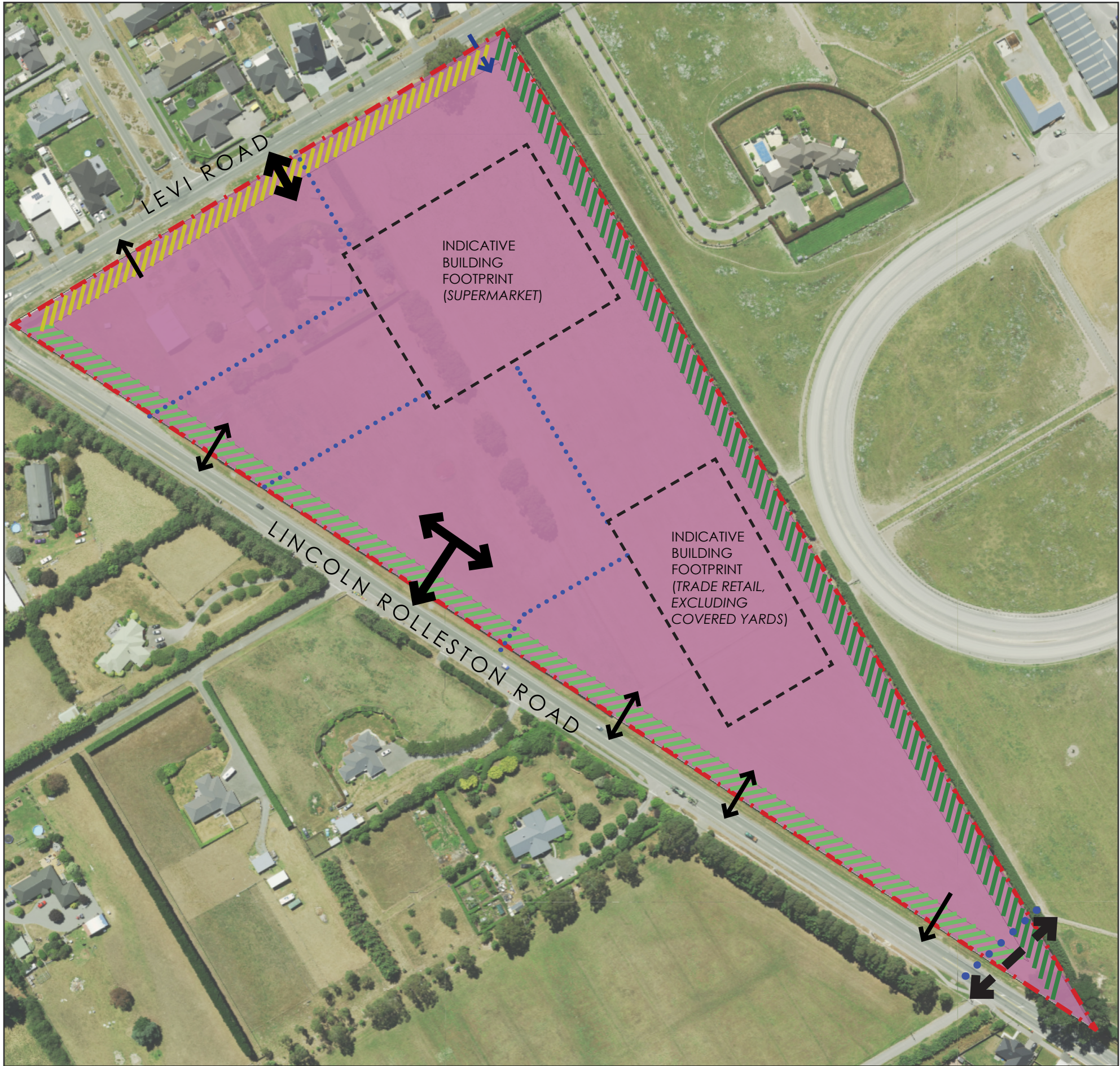


LINCOLN ROLLESTON ROAD LARGE FORMAT RETAIL PRECINCT



PRINCIPAL ENTRANCE

PRINCIPAL ENTRANCE WITH ROAD LINKS

SUPPLEMENTARY ENTRANCE

SUPERMARKET SERVICE ENTRANCE ONLY

FUTURE PRIMARY ROAD

INDICATIVE PEDESTRIAN CONNECTIVITY (INTERNAL)

INDICATIVE CYCLE /PEDSTRIAN ROUTE

3M (MINIMUM) LANDSCAPE TREATMENT

5M (MINIMUM) LANDSCAPE TREATMENT

10M LANDSCAPE TREATMENT AND ACOUSTIC TREATMENT (2M FENCE ON BOUNDARY AND 2.5M FENCE APPROX. 6M FROM BOUNDARY)

LFRZ (PREC13)

SITE BOUNDARY

N

LANDSCAPING

- Landscape planting shall be established in the landscape planting areas prior to the erection of any principal building on any site subject to LFRZ-SCHED1
- Tree planting within the car park areas of PREC13 shall be at a ratio of one tree per five car parks
- All trees to be planted within the car parking areas (excluding road frontage trees) shall be planted with a minimum uncompacted available soil volume based on the expected future size of the tree, as follows:
 - (i) Small tree (<7m in height): 5-15m³ (ii) Medium tree (7-15m in height): 20-40m³ (iii) Large tree (>15m in height): 40m³
- Uncompacted available soil volume' for the purpose of this rule means the volume of soil excluding aggregate should a structural soil mix be used.
- The landscaping shall consist of those species listed in APP4 along with the following additional species:

GROUP A

Alnus jorullensis - Mexican Alder.
Carpinus betulus - Hornbeam
Liriodendron tulipifera 'fastigiata' - Upright Tulip Tree
Platanus orientalis 'Autumn Glory' - Oriental Plane
Quercus coccinea - Scarlet Oak

GROUP C

Coprosma rugosa 'Lobster'
Corokia 'Geentys Green'
Pseudopanax lessonii - Houpara
Pseudowintera colorata - Horopito

GROUP D

Apodasmia similis - Oioi
Arthropodium cirratum - Rengarenga Lily
Astelia nervosa 'Westland'
Carex testacea - Speckled Sedge
Carex virgata - Pukio
Chionochloa flavicans - Snow Tussock,
Chionochloa rubra Red Tussock
Brachyglottis greyii -
Dianella revoluta 'Little Rev'
Dianella tasmanica 'Tas Red'
Echinacea 'White Swan'

Eleocharis acuta - Sharp Spike Sedge
Gaura - Bee Blossom
Muehlenbeckia axillaris - Creeping Pohuehue