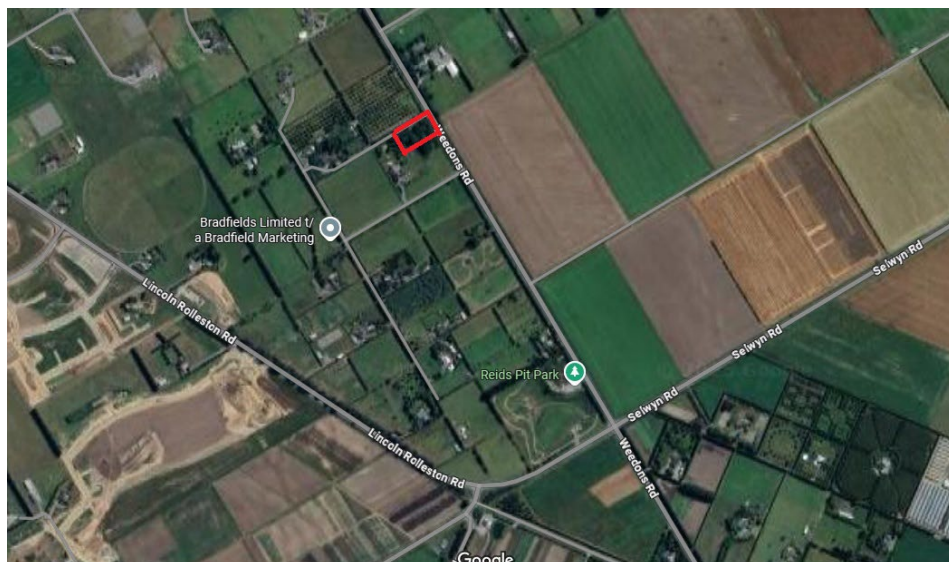


Arborist Report

Project Manager:	Hamish Wheelans	Email:	hamish@yoursection.nz
Site:	1/487 Weedons Road, Rolleston		
Arborist:	Mat Palmer		
Contact:	Advanced Tree Services	Email:	info@atscrew.net
Date of site visit:	10.07.25		

Brief

Hamish Wheelans has asked me to survey the trees at 1/487 Weedons Rd, Rolleston, to determine if any are suitable for retention as reserve trees when the site is subdivided.



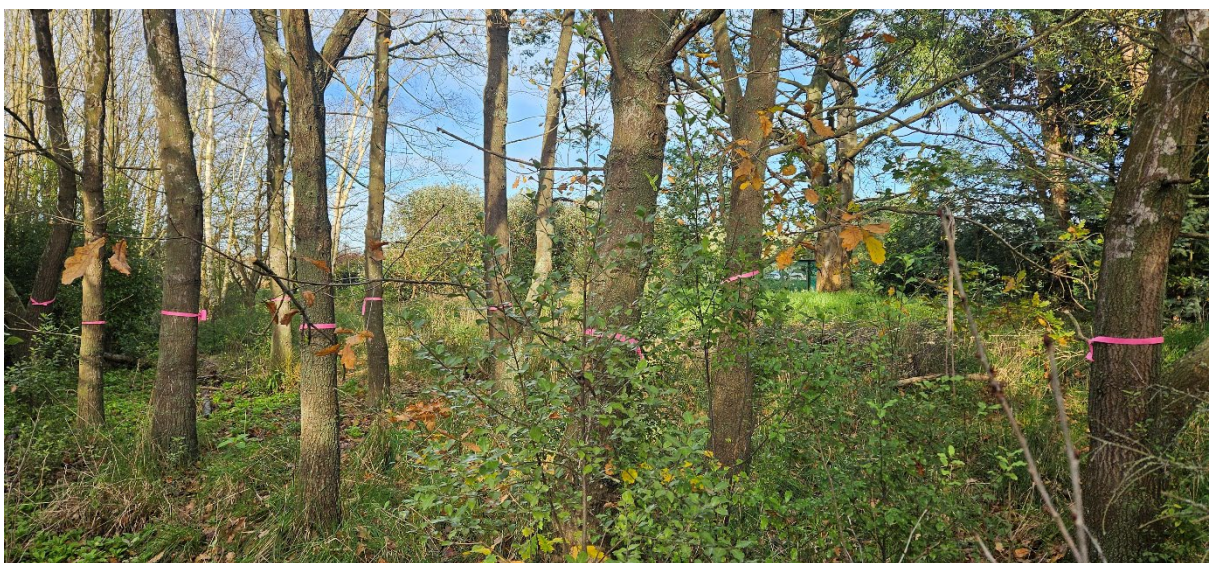
Assessment

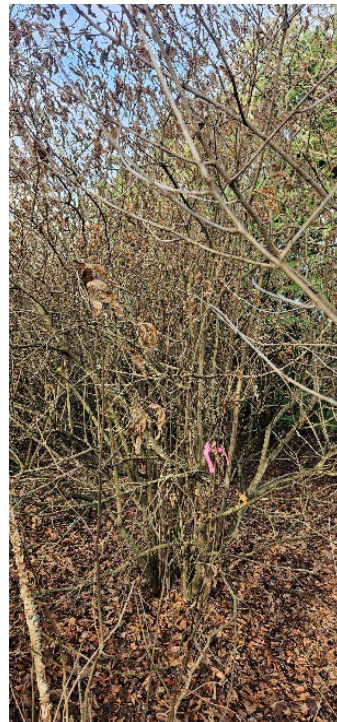
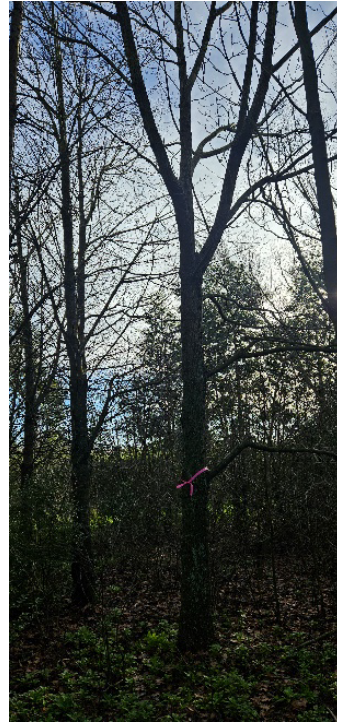
I have identified around forty trees that could potentially be retained as reserve specimens. I have marked these with pink flagging tape. They include:

- 10 Quercus robur
- 7 Picea
- 1 Black Walnut
- 3 Ginkgo biloba
- 7 European Beech
- An avenue of approximately 12 Cherry trees
- Mixed species native border (not marked with flagging tape)

Many of the trees were originally planted in a nursery lot and are arranged in rows, so some selective thinning and form pruning will be necessary.







Recommendation

My advice for the next steps is to remove all the weed species and the poorer specimens that I have not flagged for retention. The trees I propose for removal include Acacias, which are considered undesirable weed species, Eucalyptus trees that are exhibiting poor form, Cypress trees that have dead tops and are in a state of decline, as well as Robinias that are approaching the end of their life cycle. Following this, we can conduct a detailed evaluation of the retained trees to finalise our assessment.
