

Proposed Church

LOT: 912012 DP: 7589

Building Consent - RFI - REVISION C

Sheet Index			
Subset ID and Name	Layout ID	Layout Name	Revision ID & Issue Date
A1 SITE	A1.01	COVER SHEET	C - 2/03/24
A1 SITE	A1.02	SITE PLAN	C - 2/03/24
A1 SITE	A1.03	SITE ACCESS PLAN	C - 2/03/24
A2 PLANS	A2.01	ACCESSIBILITY & FLOOR PLANS	C - 2/03/24
A2 PLANS	A2.02	FRAMING PLANS	C - 2/03/24
A2 PLANS	A2.03	ROOF PLAN	C - 2/03/24
A2 PLANS	A2.04	HYDRAULIC PLANS	C - 2/03/24
A2 PLANS	A2.05	REFLECTED CEILING PLANS	C - 2/03/24
A3 ELEVATIONS	A3.01	ELEVATIONS	C - 2/03/24
A3 ELEVATIONS	A3.02	ELEVATIONS	C - 2/03/24
A4 SECTIONS	A4.01	CROSS SECTIONS	C - 2/03/24
A4 SECTIONS	A4.02	CROSS SECTIONS	C - 2/03/24
A4 SECTIONS	A4.03	CROSS SECTIONS	C - 2/03/24
A4 SECTIONS	A4.04	STAIR PLANS & SECTIONS	C - 2/03/24
A5 DETAILS	A5.01	CLADDING DETAILS	C - 2/03/24
A5 DETAILS	A5.02	ROOF DETAILS	C - 2/03/24
A5 DETAILS	A5.03	JOINERY DETAILS	C - 2/03/24
A5 DETAILS	A5.04	WET AREA DETAILS	C - 2/03/24
A5 DETAILS	A5.05	ACCESSIBLE BATHROOM DETAILS	C - 2/03/24
A6 SCHEDULES	A6.01	EXTERIOR DOOR/WINDOW SCHEDULE	C - 2/03/24
A6 SCHEDULES	A6.02	INTERIOR DOOR SCHEDULE	C - 2/03/24

Site Information	
Lot: 912012 DP: 7589	
Site area:	12,147.9m2
Ground Floor area:	1,663.40m2
Mezzanine Floor Area:	630.96m2
Total Floor Area:	2,294.36m2
Site coverage:	13.7%
Impervious surface area:	7,165m2
Territorial Authority:	Selwyn District Council
Planning Zone:	Living Z
Earthquake Zone:	2
Wind Zone:	High
Exposure Zone:	C
Snow Zone:	N4 1.5kPa
Climate Zone:	3

NZBC F5

Site Safety fencing (linked netting) is to be erected around the site (urban) / building platform (rural) to a height of 2.0m. The entry to the site will have gates that will open on to the site.

When work is taking place at height (i.e roofing), roofing edge protection will be provided and is to comply with page 27 and 28 of Working at Height Safety Guide in attached documents.

Refer to the Erosion & Sediment Control Management Plan by Kim Sanders Consulting in Supporting Documents.

TO BE READ IN CONJUNCTION WITH THE SITE ACCESS PLAN & THE CIVIL ENGINEERS PLANS & DETAILS IN SUPPORTING DOCS

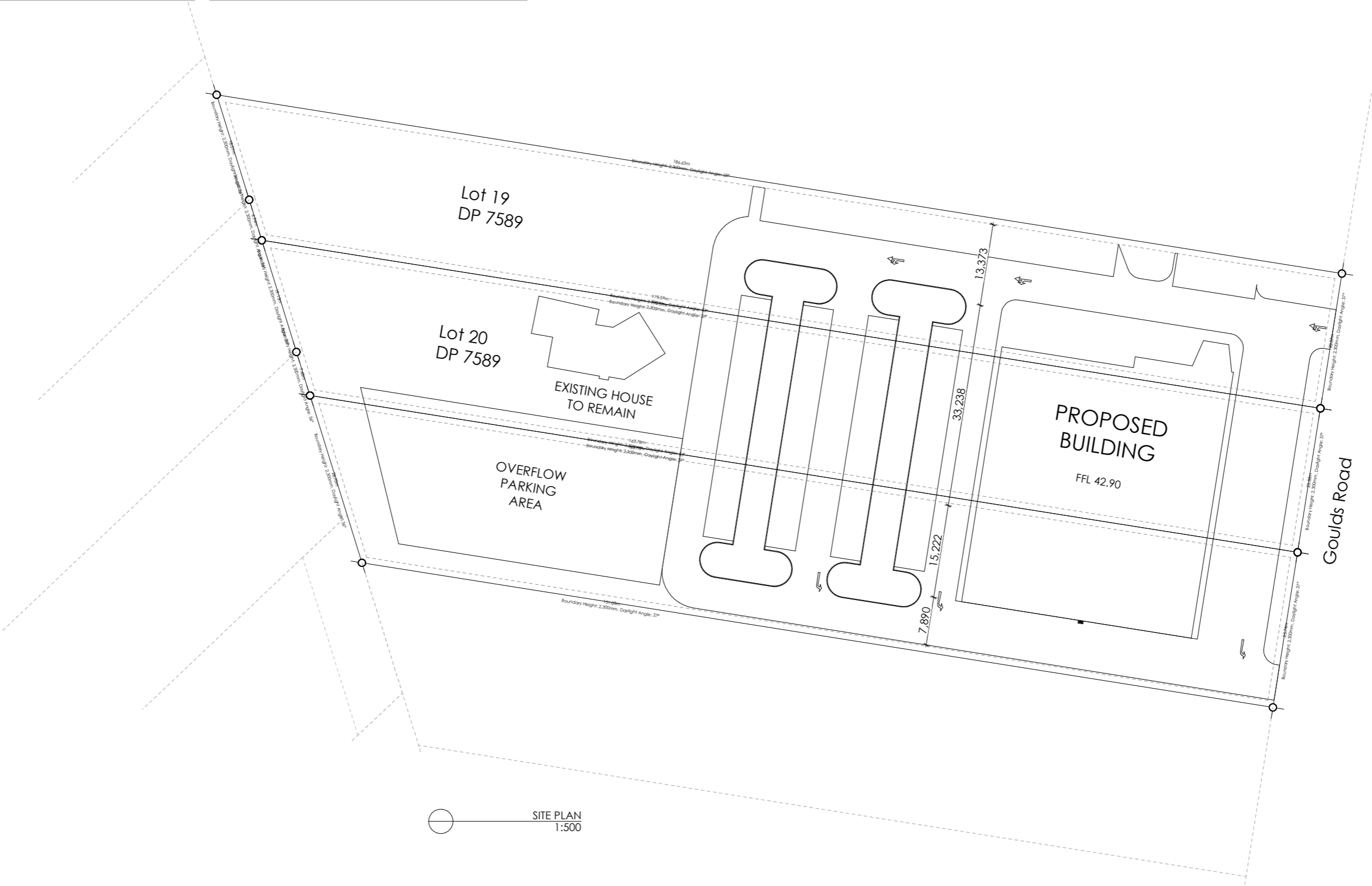
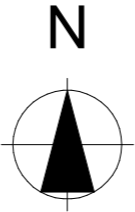
General Notes

All entry and exits to be in accordance with NZBC D1/AS1.

All access routes must have a non slip surface in accordance with NZBC D1 AS1 Table 2. All 1:100 fall min away from building to landscaping, kerb or sump.

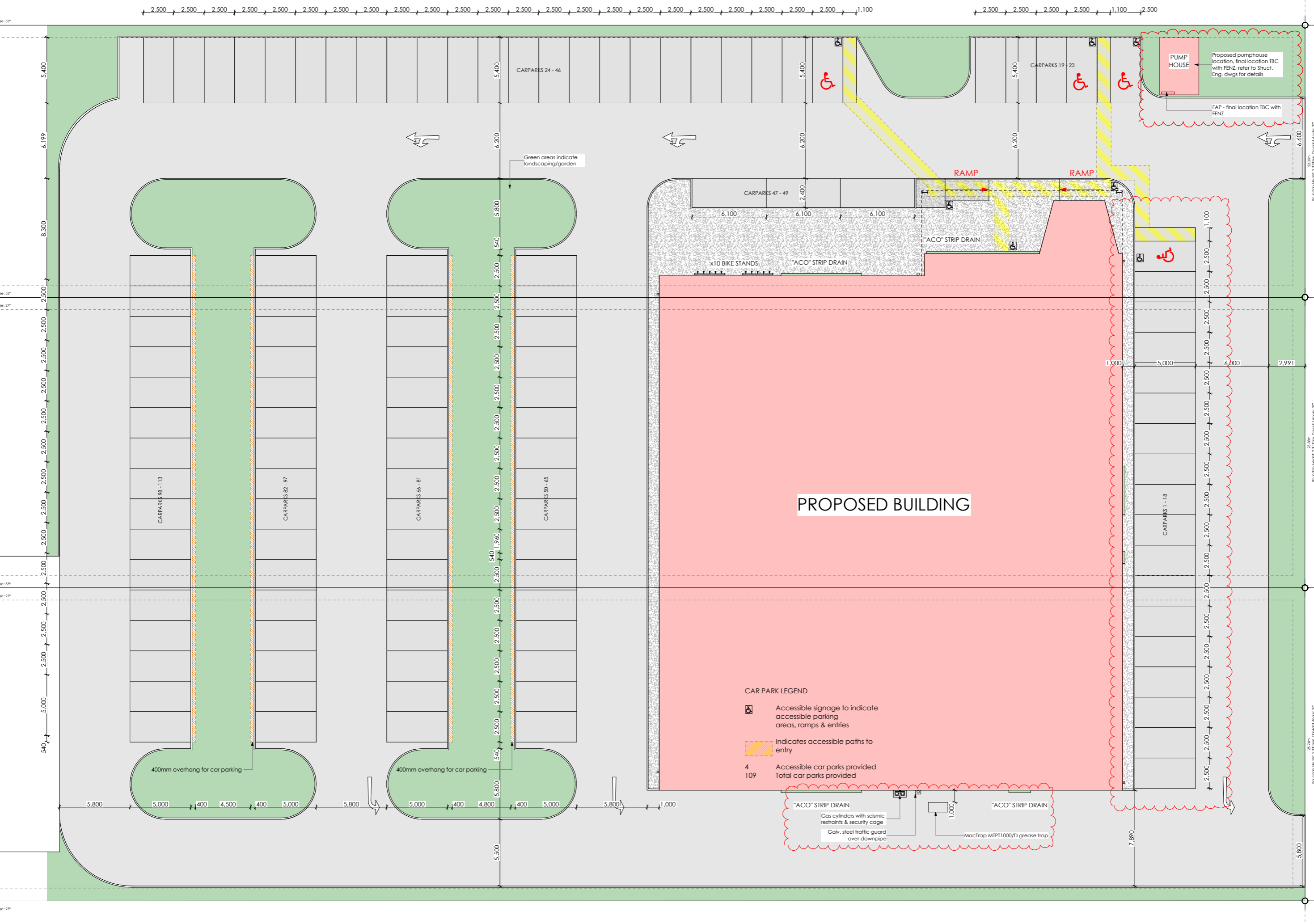
Confirm all service connection locations on site prior to site work commencing.

Site scrape required to level building platform, FFL to be 225mm min above the levelled FGL.



SITE PLAN
1:500





GENERAL NOTES:

ROOF:

Office & Auditorium roof to be Metacraft Metcom 965 cladding with 15 deg. pitch falling to external 0.55 BMT 300mm Metacraft box gutter with 150mm diameter downpipes.

Auditorium roof to be Metacraft Metcom 965 cladding with 15 deg. pitch falling to external gutter (as above) one side & an Equus Suprema TPO membrane internal gutter with 1:100 minimum fall to RWH outlet. Refer to the roof plan for downpipe locations and catchment areas.

All roof penetrations shall be flashed as per NZBC E2/AS1 Section 8.4 "Profiled Metal Roof Penetrations" (8.4.17 Roof Penetrations) as shown in Fig. 53 & 54.

Refer to Structural Engineers plans and details for roof structure.

CLADDING:

Metacraft Metcom 965 vertically fixed over 20mm cavity and Thermakraft Watergate plus building wrap.

All flashings to be 0.55mm BMT Colorsteel Endura fixed in accordance with NZS 3604:2011 & meeting the durability requirements of NZBC E2/AS1 Table. 20, 21, 22.

DURABILITY:

All timber framing, metal fixings and fastenings must comply with NZBC B2 and its referenced standards (e.g. NZS3604, NZ3602, etc.)

PREVENTION OF DAMPNESS:

Fix DPC to all timber members abutting concrete.

TIMBER ABUTTING STRUCTURAL STEEL:

Fix DPC to all timber members abutting structural steel.

ACCESSIBILITY & SIGNAGE NOTES

Allow for the installation of an Audio Loop system in accordance with NZBC G3 Interior Environment

1200mm min clear path for all accessible routes with 860 door leaf typical (760mm clear opening min)

All door handles to be lever action at a height of 1000mm AFFL typical

Light switches to be 1000mm AFFL in line with NZBC G9

Provide an accessible counter in accordance with NZBC G5 & NZS4121:2001 Part 11.1.1 & 11.1.2

All accessible signage to be displayed at a height of 1400mm to 1700mm

All WC compartments to have UNISEX signage in accordance with NZBC D1/AS1 Part 8.1 - Accessible WC's to have signage displayed at a height of 1400mm - 1700mm

Fire alarm panel to be displayed at the front of the building in a location approved by FENZ.

Ensure fire call point signage is displayed in accordance with the Fire Engineers report and NZBC F8/AS1

To be read in conjunction with the Fire Engineers report in supporting documents.

FLOOR PLAN LEGEND

- Rebated water absorbent matting at all entries
- Selected Tarkett non slip commercial vinyl floor covering with coved edges
- Selected Tarkett Primo Safe, T vinyl floor covering with coved edges
- Selected Godfrey Hirst 500x500 carpet tile (All stairs carpeted)
- Selected tile adhesive grout fixed to concrete slab
- Accessible signage indicating facilities & access
- Directional exit signs for evacuation

KITCHEN & FOOD PREPARATION AREAS:

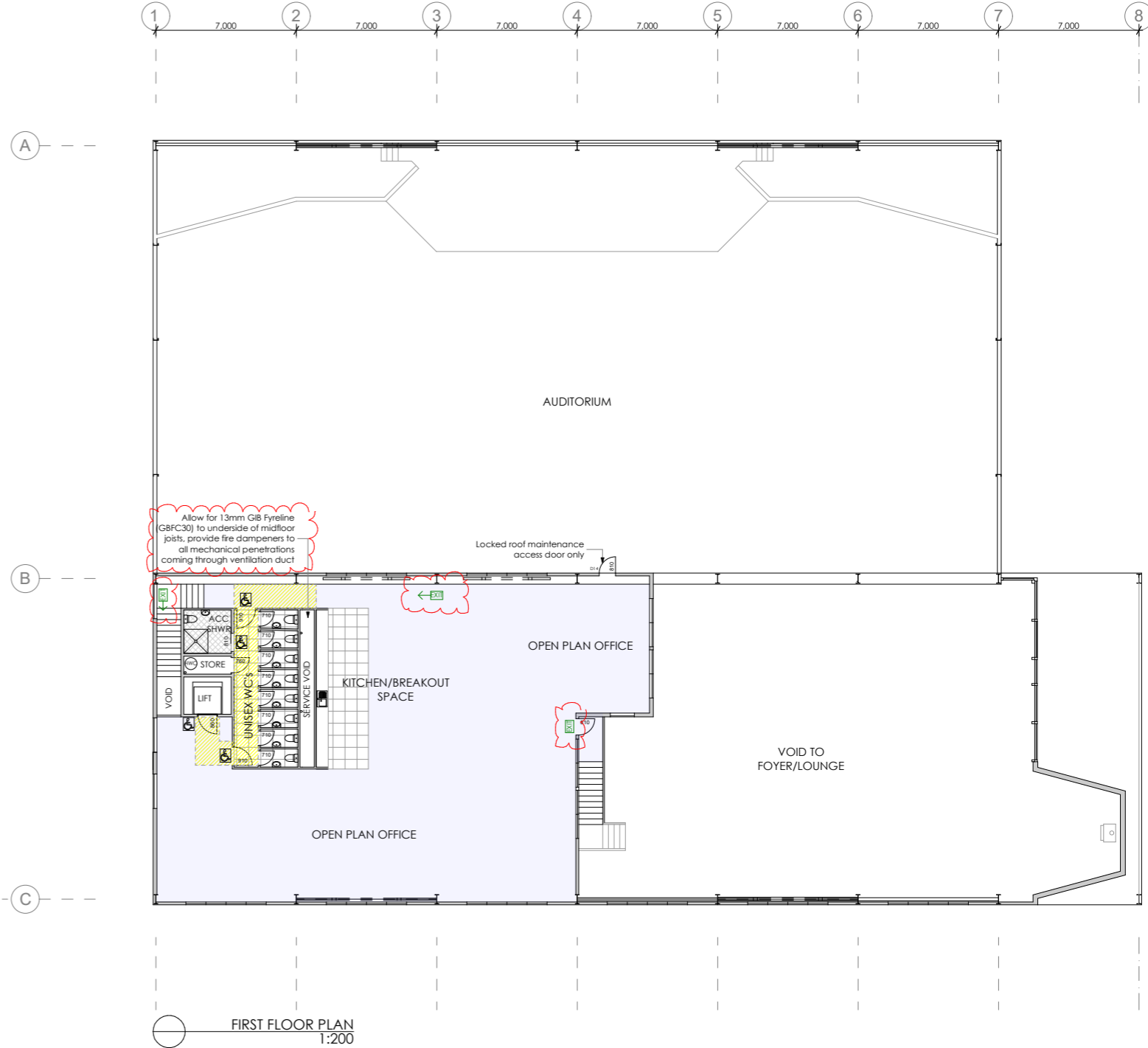
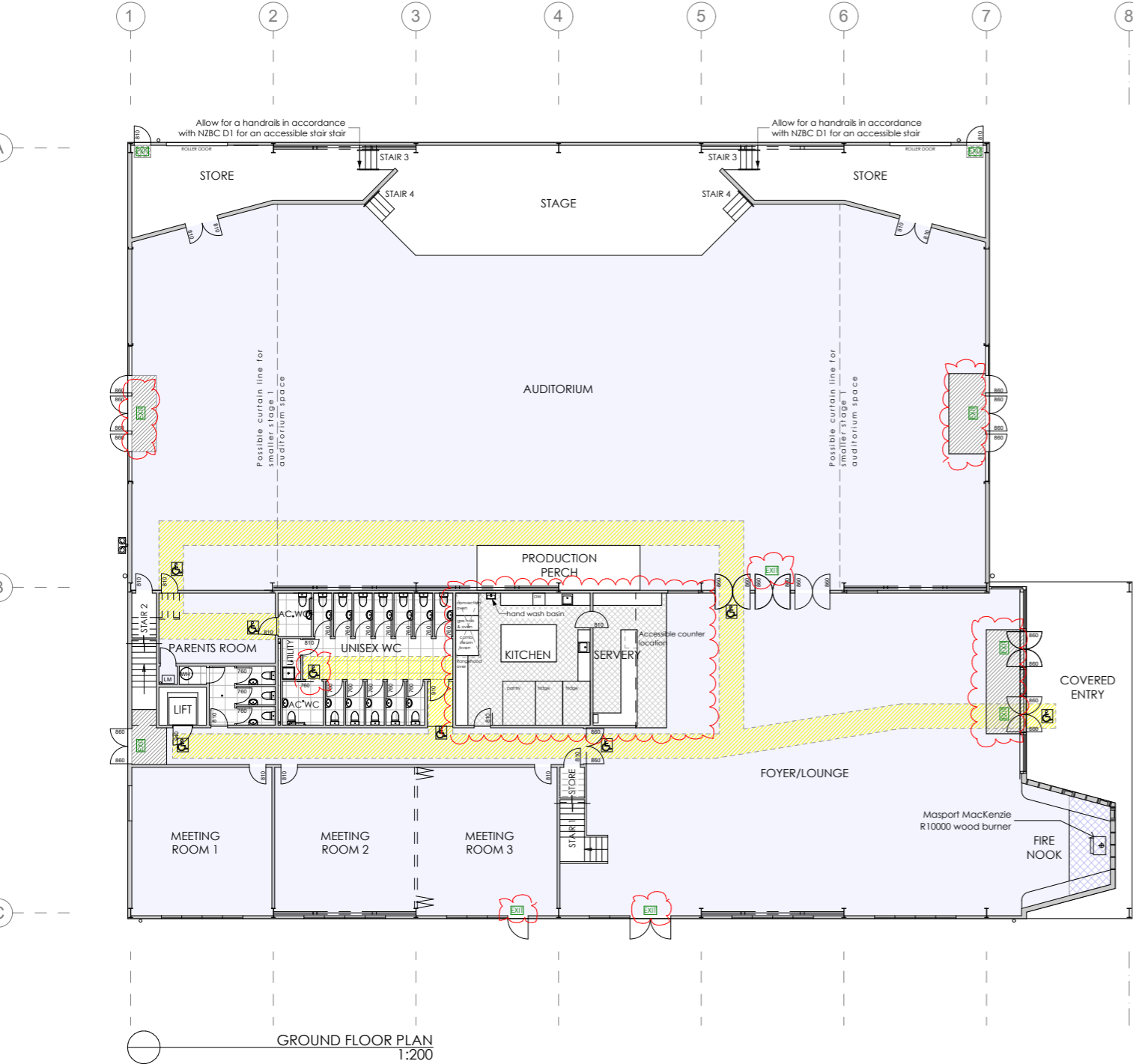
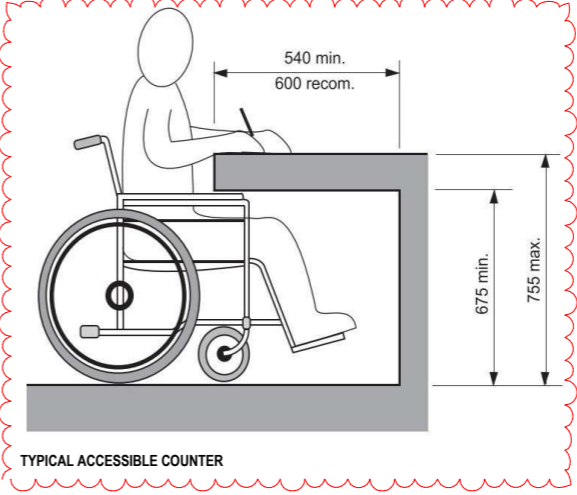
All surfaces in the downstairs commercial kitchen areas to be in accordance with NZBC G3 2.0 & 2.1

All wall linings to have surfaces that are non porous & easily maintained in a hygienic condition.

All benchtops and wall linings within the commercial kitchen area that are adjacent to cooking appliances to be Stainless Steel.

All plasterboard linings in the commercial kitchen to be sealed using 1 coat of Resene Waterborne SureSeal then 2 top coats of Resene SpaceCote Low Sheen Kitchen & Bathroom on walls & Resene SpaceCote Flat Kitchen & Bathroom on ceilings.

Floor coverings to be impervious with slip resistance in accordance with NZBC D1/AS1



Whimbrel

Structural Engineering & Architecture

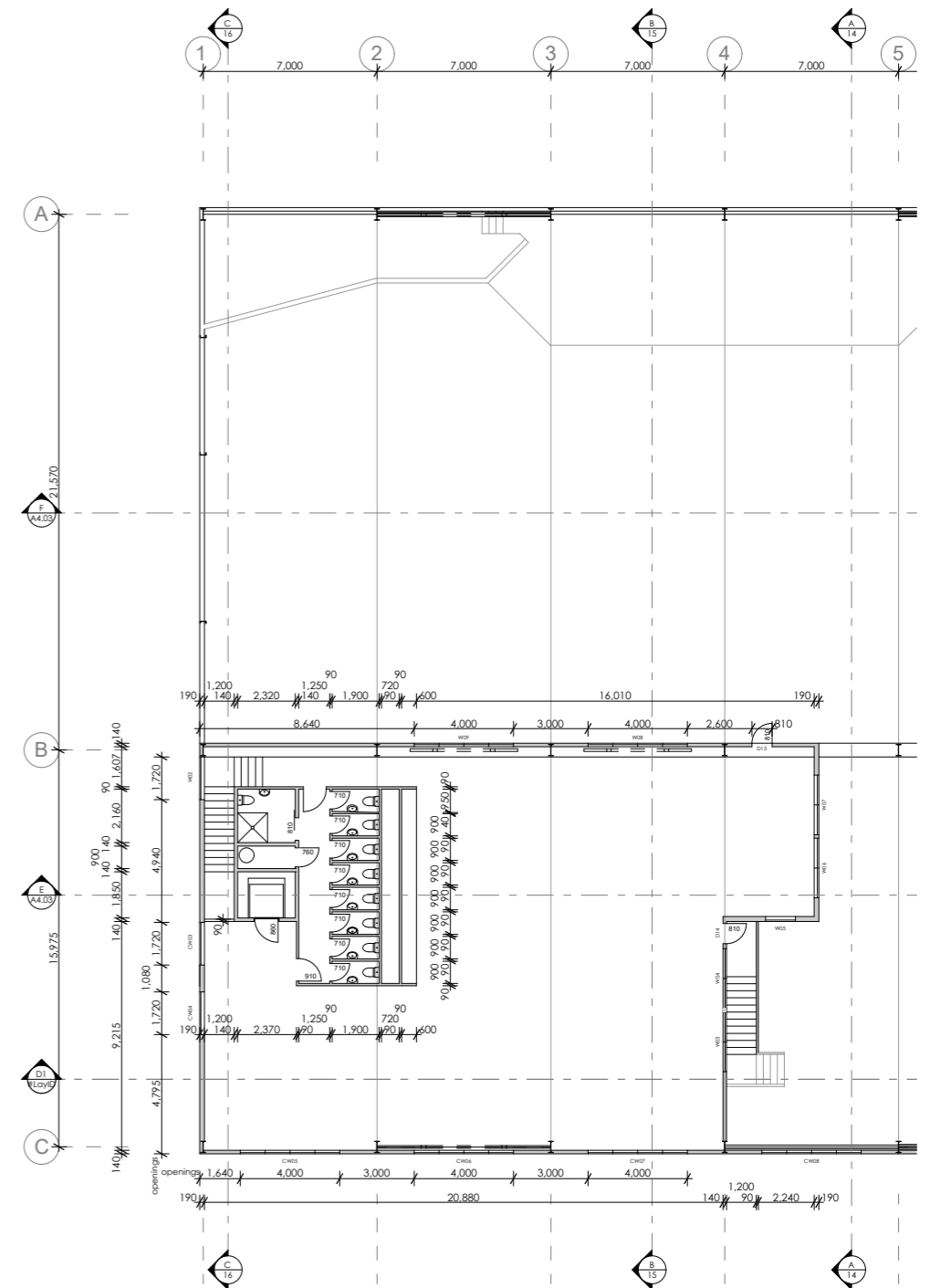
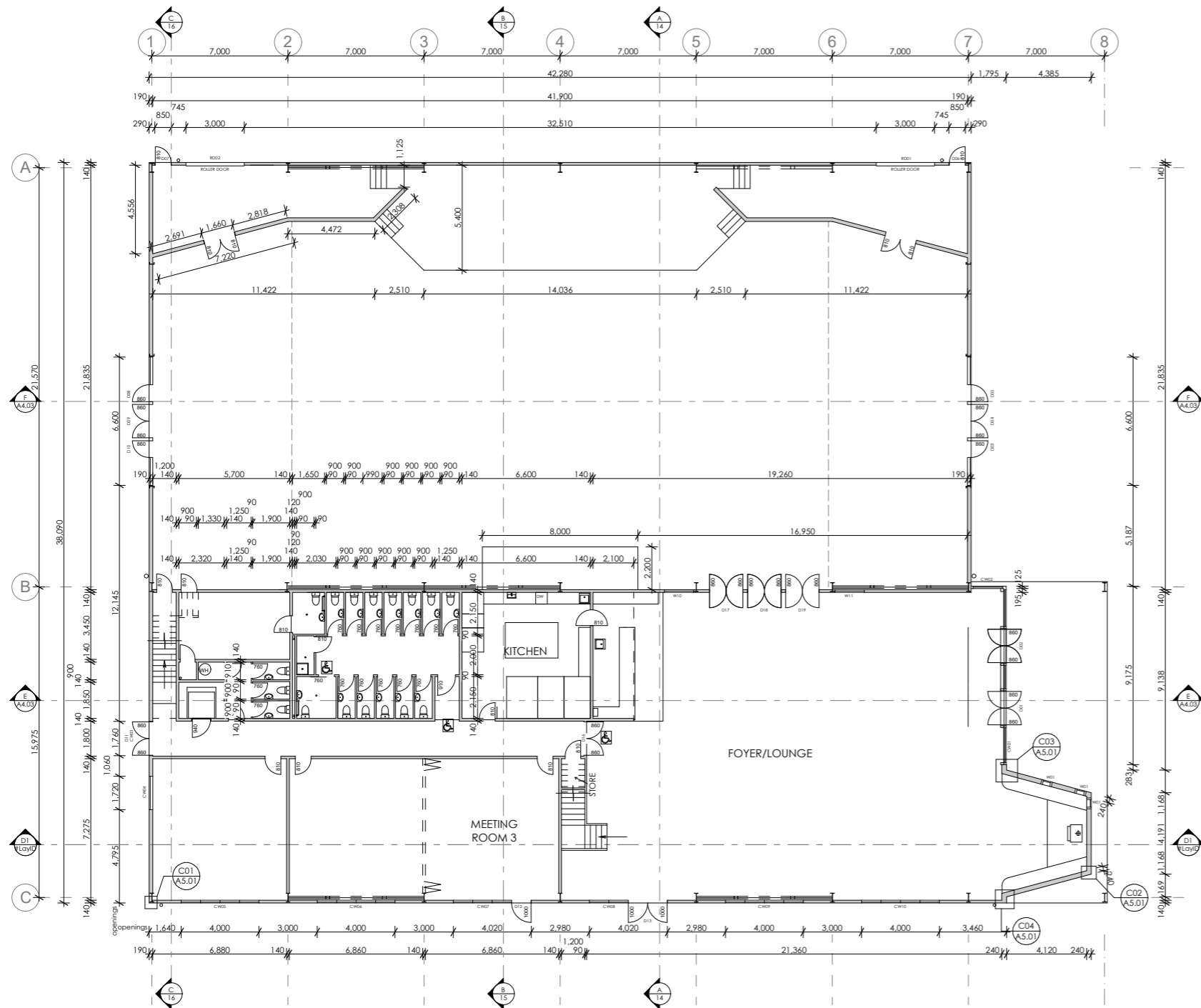
www.whimbrel.co.nz
james@whimbrel.co.nz
027 225 8277

ACCESSIBILITY & FLOOR PLANS

Revision ID - C

Proposed Church
999 Goulds Road, Rolleston

A2.01
1:200 @ A2
printed to scale at 100% on A2



Whimbrel

Structural Engineering & Architecture

www.whimbrel.co.nz
james@whimbrel.co.nz
027 225 8277

FRAMING PLANS

Revision ID - C

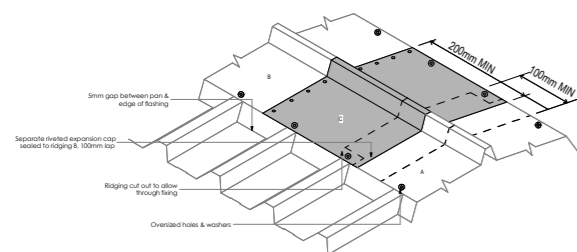
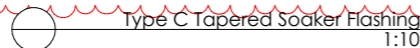
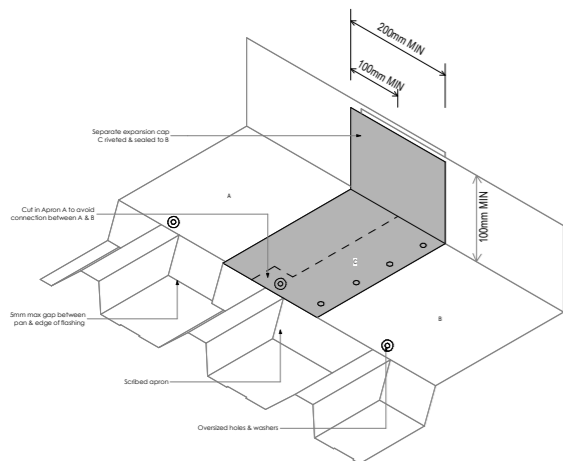
Proposed Church
999 Goulds Road, Rolleston

A2.02
1:200 @ A2
printed to scale at 100% on A2

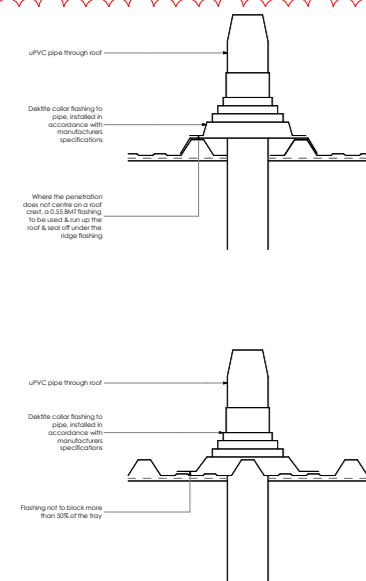
Metalcraft Metcom 965 cladding with 15 deg. pitch on DHS 250/18 purlins @ 1200 crs spanning 7m between portal frames. Refer to the Structural Engineers Plans and specifications.

All roof penetrations shall be flashed as per NZBC E2/AS1 Section 8.4 Profiled Metal Roof Cladding (8.4.17 Roof Penetrations) as shown in Fig. 53 & 54.

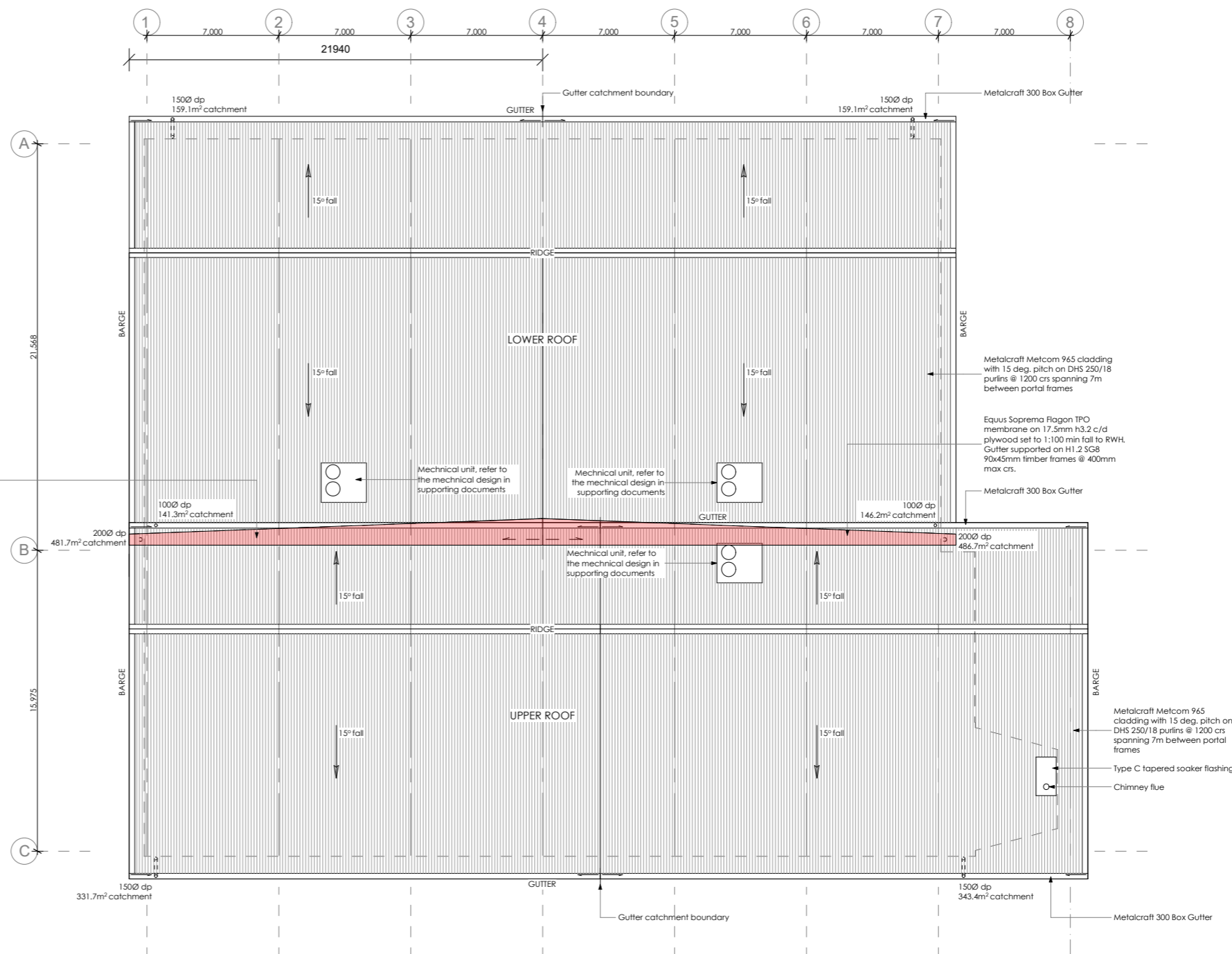
All flashings to be 0.55 BMT Colorsteel Endura fixed in accordance with NZS3604:2011 & meeting the durability requirements of NZBC E2/AS1 Table 20, 21 & 22.

 Ridge Flashing Expansion Joint
1:10

Apron Flashing Expansion Joint
1:10



Typical Pipe Penetration
1:10



Roof Plan
1:200

FOUNDATION KEY	
	50mm sawcuts. Top mesh discontinuous across cut with additional mesh on bottom layer lapped to maintain cross section area.
	Control joint with R12 dowel bars 400mm long.
	Footling A - 1300mm square x 300mm deep directly beneath slab thickenings.
	Footling B - 1500mm square x 300mm deep directly beneath slab thickenings.
	Slab Thickening 1 - 300mm x 300mm deep (including slab). 4-H16 bars & D12 ties @ 400mm max crs. 1200mm into slab
	Slab Thickening 2 - 300mm x 300mm deep (including slab). 4-H16 bars & R10 ties @ 400mm max crs.
	Slab Thickening 3 - 200mm wide x 200mm deep (including slab). 2-H16 bars & D12 ties @ 400mm Max crs. 1200mm into slab

PLUMBING LEGEND:	
	Sanitary sewer drain. arrow indicates direction of flow
	Storm water drain: arrow indicates direction of flow
	Fixture discharge pipe
	DP Downpipe
	HWC Hot water cylinder
	HT Hose tap
	ORG Overflow relief gully
	GT Gully trap
	FWG Floor waste gully
	RP Roding point
	IP Inspection point
	AAV 50mm air admittance valve
	TV 100mm terminal vent
	SS 100mm discharge stack with 80mm vent through roof
	SD Strip drain

GENERAL NOTES:	
All plumbing & drainage to comply with AS/NZS 3500 or section G13 of NZBC.	
One gully trap/overflow relief gully (org) must have the rim 150mm below the overflow level of the lowest fixture	
All work to be carried out by a licenced and registered plumber.	
All waste pipe sizes, fall venting, and inspection points to be confirmed by a licenced and registered plumber.	
Exact location and routes of drains / pipes to be determined on site. layout shown is indicative only.	
Hot water cylinder: 300 litre mains pressure HWC complete with isolating valve, non return valve, expansion control valve & temperature & pressure relief valve. HWC fixed back to wall with 3 no. Seismic restraints. Overflow safe tray discharging to exterior via 40mm pipe to a free draining location. HWC to be installed on safe tray complying with NZBC G12 paragraph 5.2.3 with a 20mm min diameter drain	

PLUMBING DU'S & MIN PIPE Ø & FALL - NZBC G13/AS1			
BASIN	1	32Ø - 1:40	
WC	4	80Ø - 1:100	
CLEANERS SINK	1	40Ø - 1:40	
KITCHEN SINK	3	50Ø - 1:40	
DISHWASHER	3	40Ø - 1:40	
SHOWER	2	40Ø - 1:40	

REFER TO TABLE 4 FOR COMBINED DISCHARGE PIPE SIZE, GRADIENT & MAX DU'S.

DRAINAGE PLAN TO BE READ IN CONJUNCTION WITH THE KIM SAUNDERS CONSULTING CIVIL PLANS & DOCUMENTATION

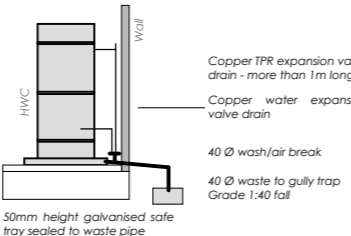
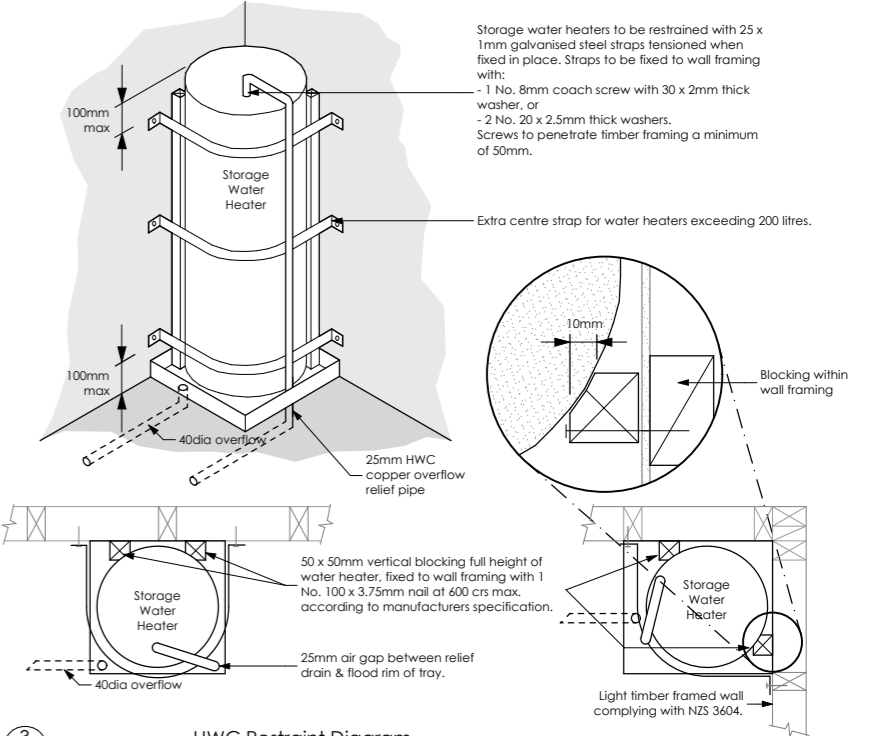
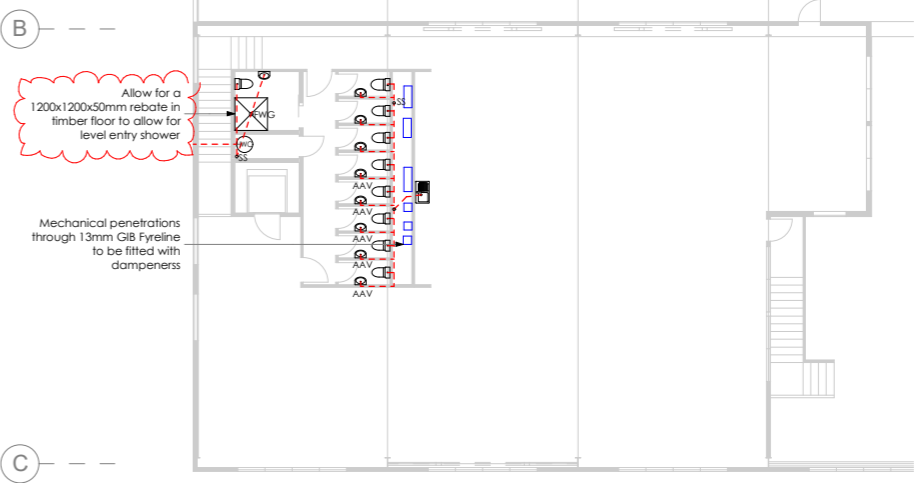
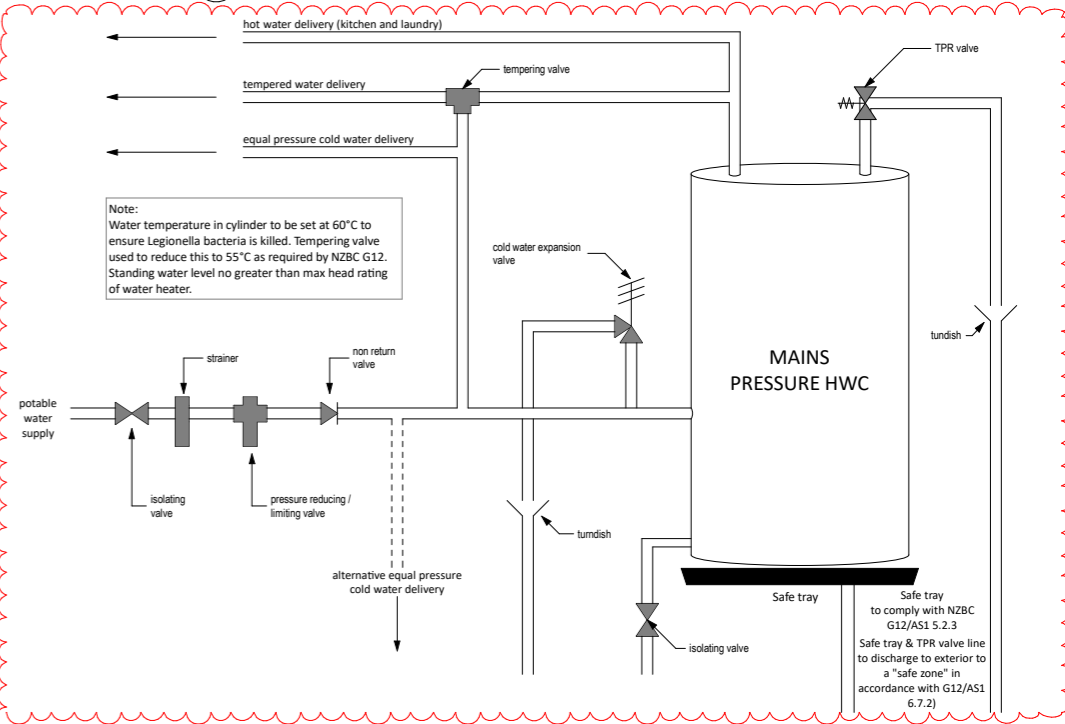


Table 4: Discharge unit loading for stacks and graded discharge pipes Paragraphs 4.3.2, 4.4.1 and 4.7.1							
Diameter (mm)	Maximum discharge from any one floor	Vertical stack (Note 1)	Graded discharge pipes				
			1:20	1:30	Minimum gradient 1:40	1:50	1:60
32	1	1	1				
40	2	6	6	5	4		
50	5	15	15	10	8		
65	6	18	51	29	21		
80	13	40	65	39	27	20	16
100	65	195	376	248	182	142	115
Note: Shaded area = not permitted 1. Total loading at the base of the discharge stack.							

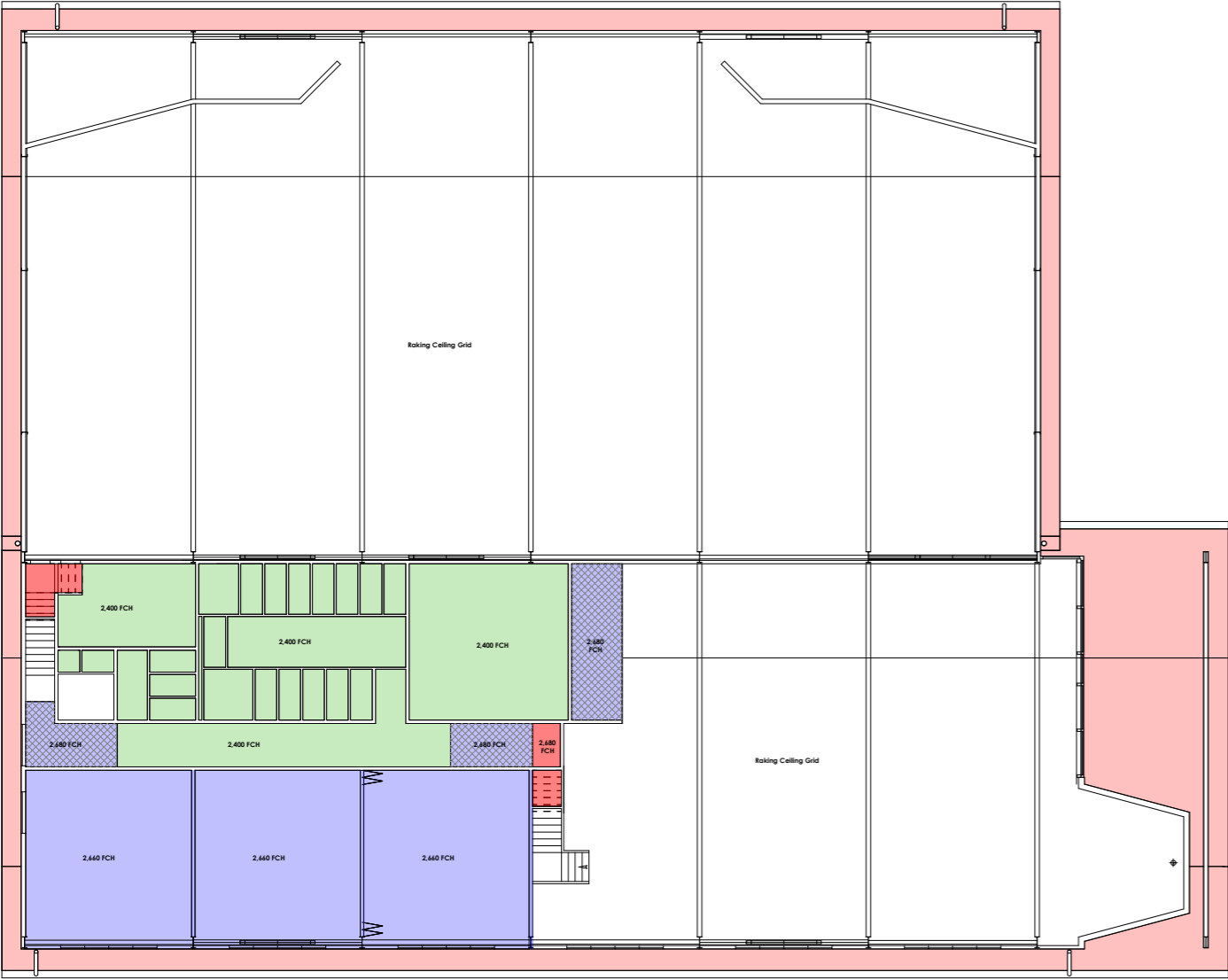


HWC Restraint Diagram
 1:50



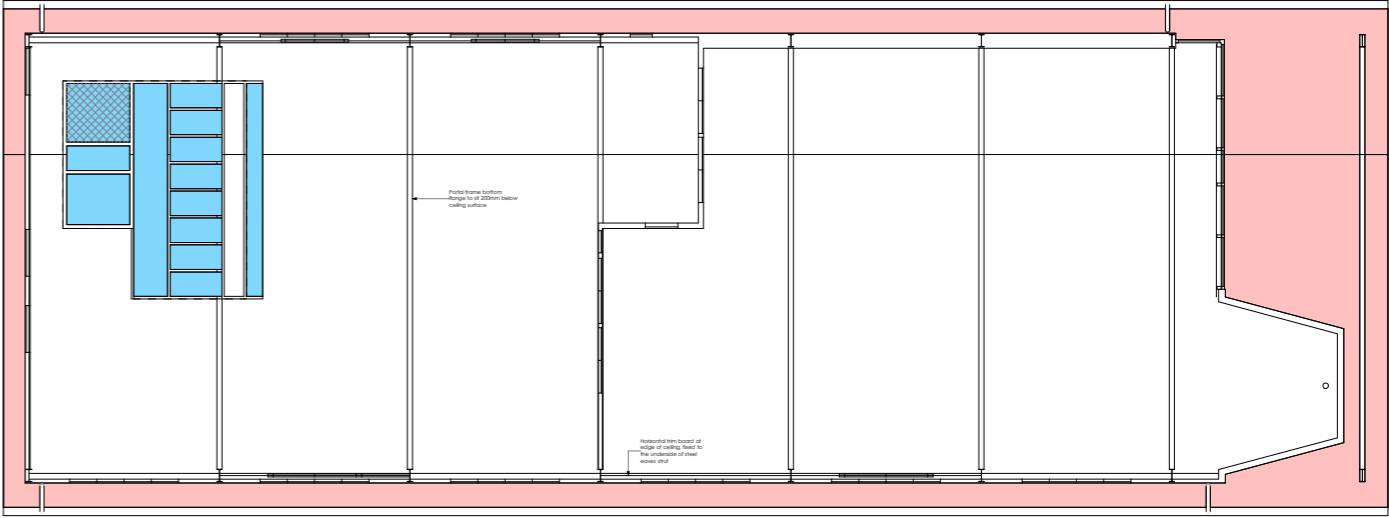
First Floor Plumbing Plan
 1:200

Foundation & Plumbing Plan
 1:200



- Selected acoustic tile grid suspended ceiling to sit 200mm above the underside of partial rafters (R/C 1.50m)
- 20' Vibration ceiling lining on 10x45 GIB 10.2 battens @ 400mm c/c. Control joints as set out in manufacturer's installation manual
- 13mm GIB Fyneline (GBFC30) ceiling installed below spandrel sheet, battens flange of 400mm c/c used to cut
- 13mm GIB Fyneline (GBFC30) ceiling on 70x35 timber battens @ 400mm c/c
- 16mm GIB Fyneline (GBFC30) ceiling fixed to the underside of the stair structure
- 13mm GIB Fyneline (GBFC30) ceiling direct fixed to the underside of the roof floor joist with 13mm 30x GIB fixed below on suspended steel battens @ 400mm c/c
- 13mm 30x GIB on 70x35mm timber battens @ 400mm c/c
- 13mm GIB Aquadine on 70x35mm timber battens @ 400mm c/c

TO BE READ IN CONJUNCTION WITH THE BEATTIE AIR MECHANICAL PLANS



Whimbrel

Structural Engineering & Architecture

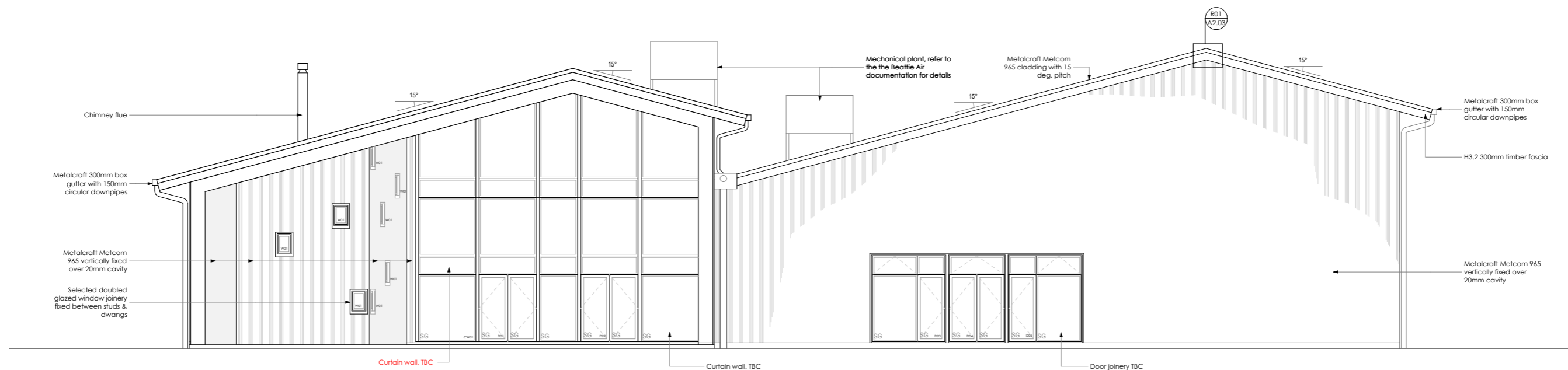
www.whimbrel.co.nz
james@whimbrel.co.nz
027 225 8277

REFLECTED CEILING PLANS

Revision ID - C

Proposed Church
999 Goulds Road, Rolleston

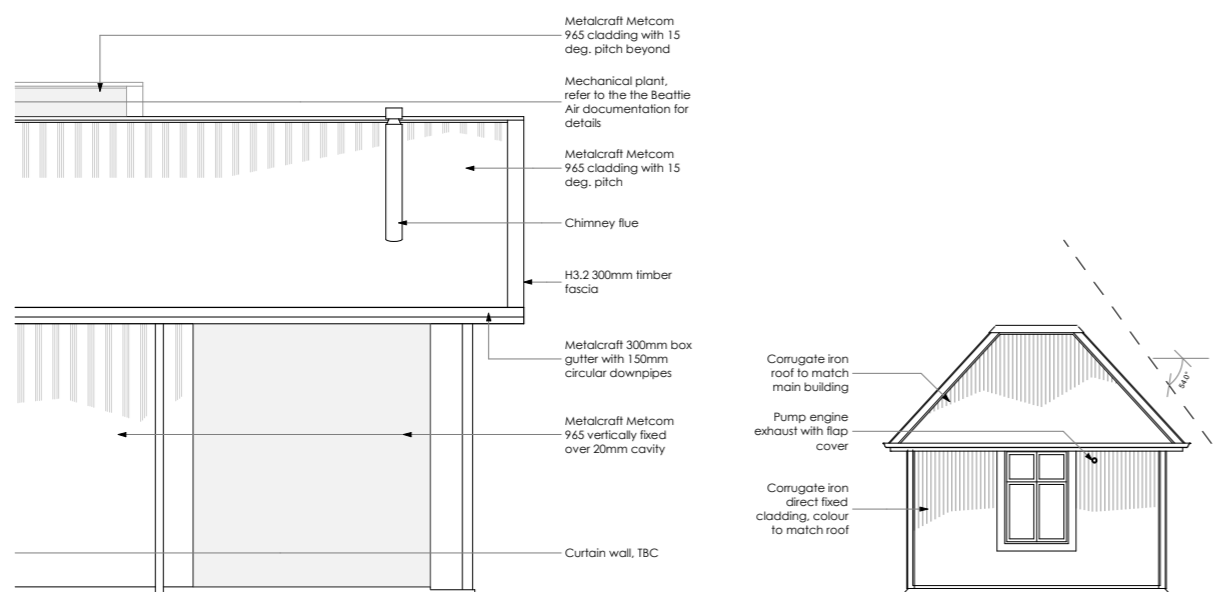
A2.05
1:200 @ A2
printed to scale at 100% on A2



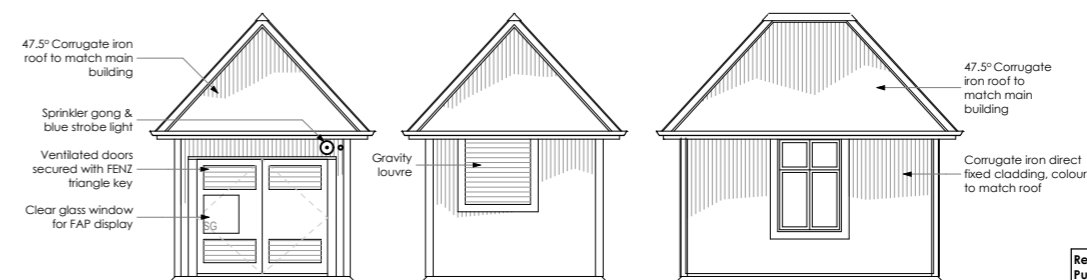
North Elevation
1:100



East Elevation
1:100



East Elevation with Pump House
1:100



Whimbrel

Structural Engineering &
Architecture

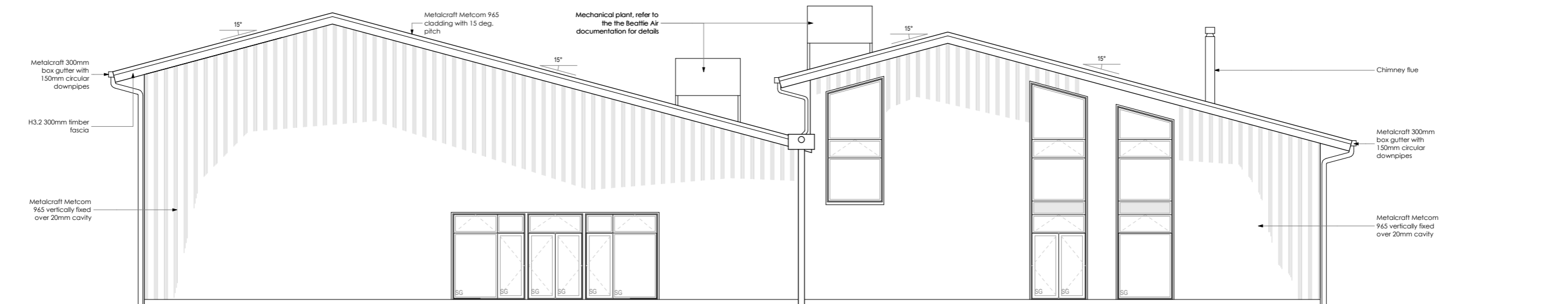
www.whimbrel.co.nz
james@whimbrel.co.nz
027 225 8277

ELEVATIONS

Revision ID - C

Proposed Church
999 Goulds Road, Rolleston

A3.01
1:100 @ A2
printed to scale at 100% on A2



South Elevation
1:100



West Elevation
1:100



Whimbrel

Structural Engineering &
Architecture

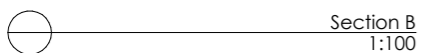
www.whimbrel.co.nz
james@whimbrel.co.nz
027 225 8277

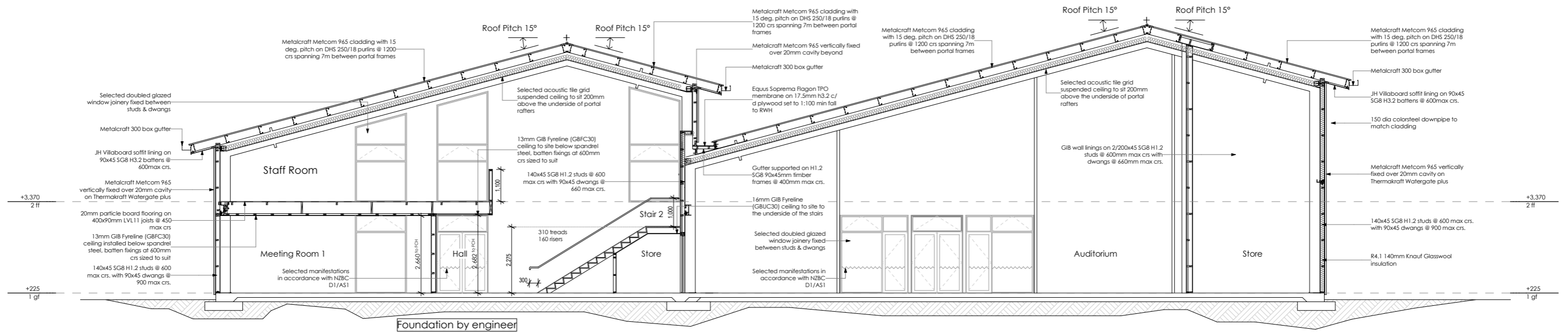
ELEVATIONS

Revision ID - C

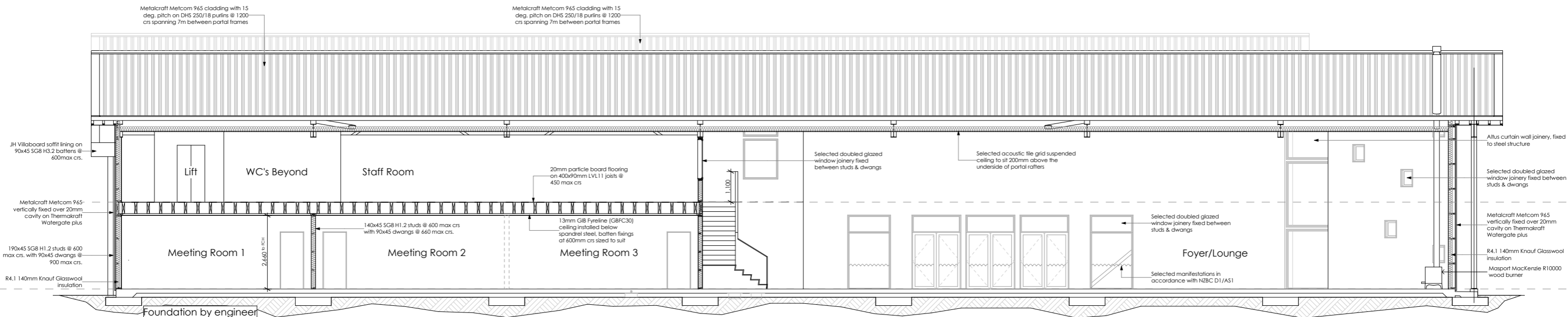
Proposed Church
999 Goulds Road, Rolleston

A3.02
1:100 @ A2
printed to scale at 100% on A2



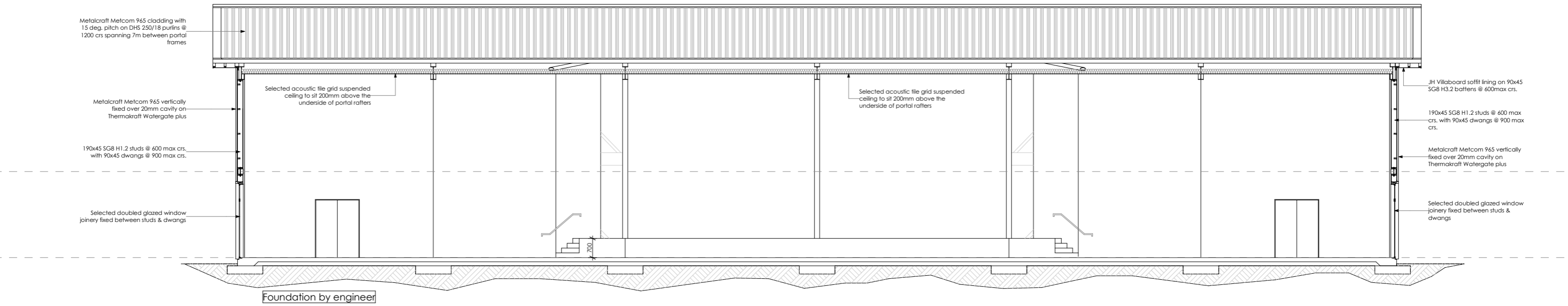
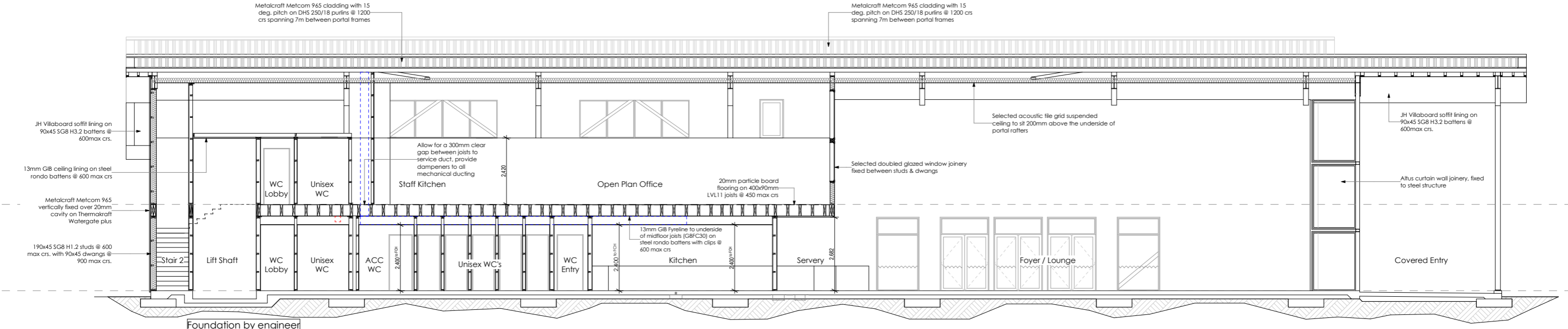


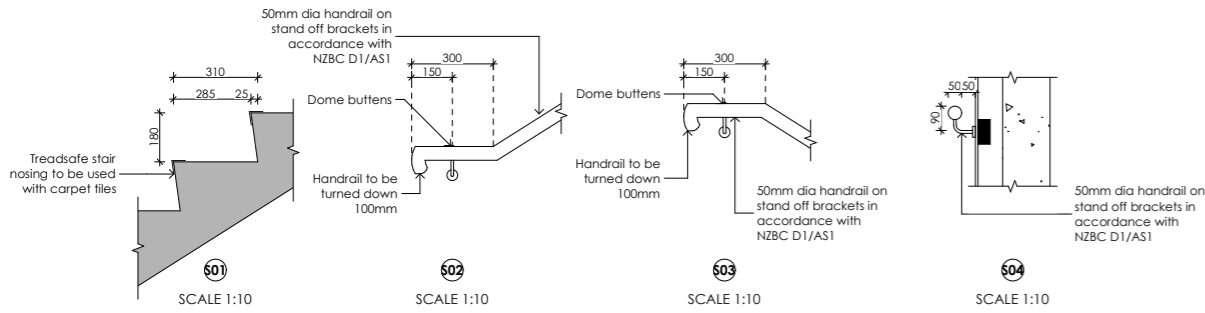
Section C
1:100



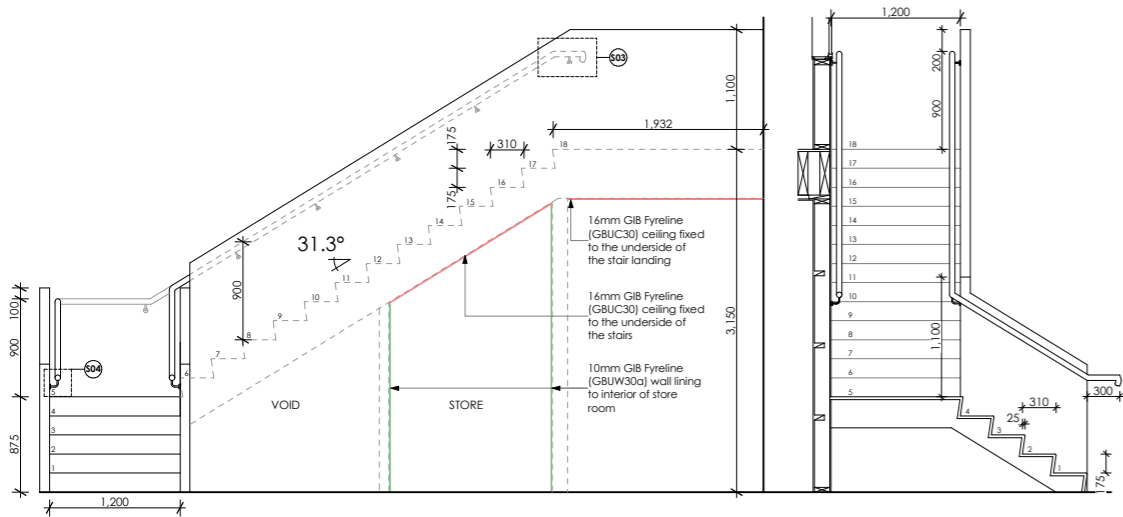
Section D
1:100



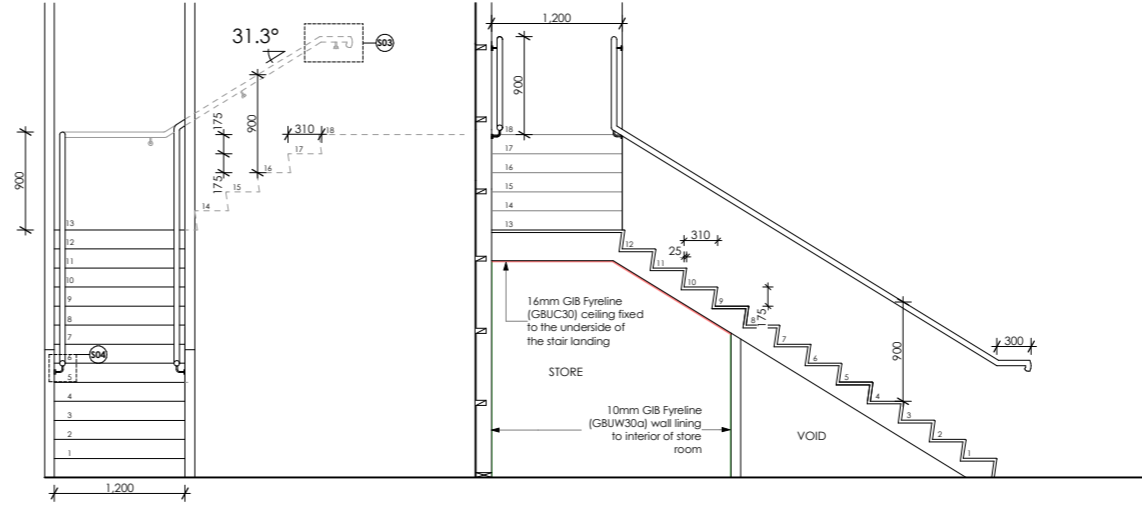




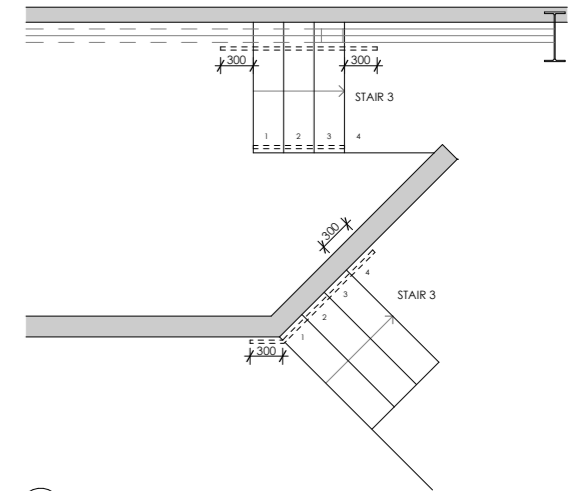
Stair Details
1:20



Stair One Plan & Elevations
1:50

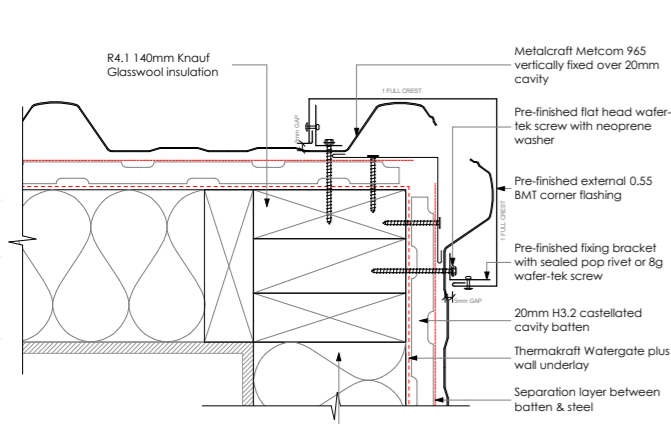


Stair Two Plan & Elevations
1:50

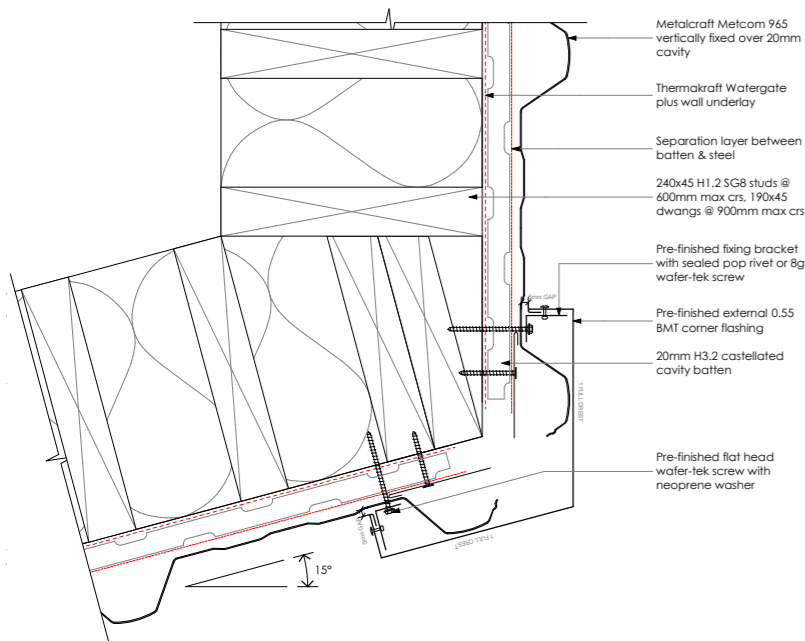


Stair Three & Four Plans
1:50

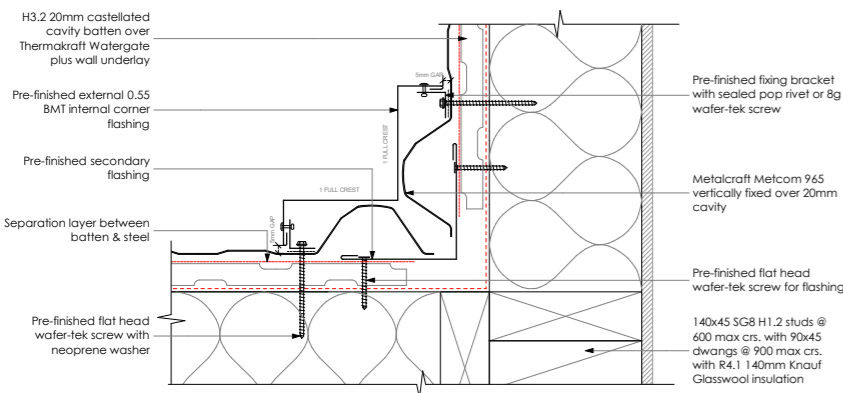




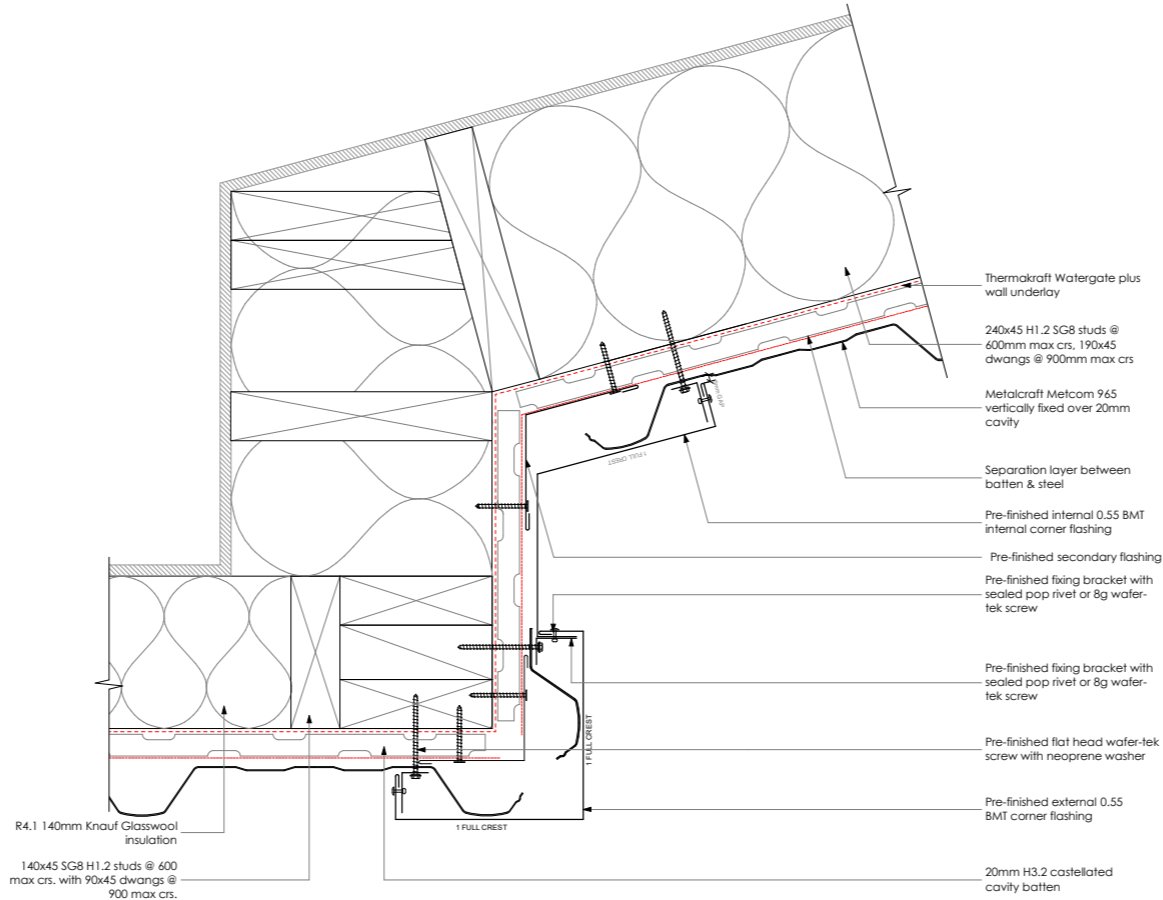
C01 Profiled Metal - External Corner 1:5



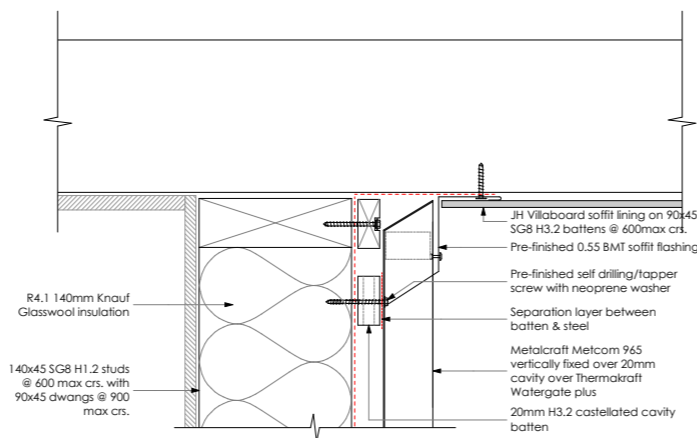
C02 Profiled Metal - External Corner Detail 1:5



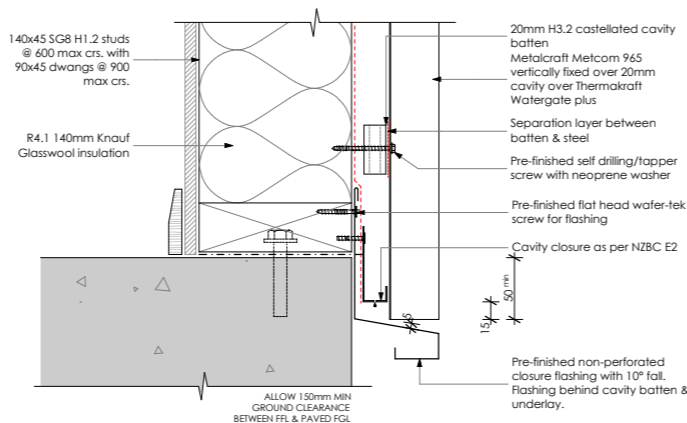
C03 Profiled Metal - Internal Corner Detail 1:5



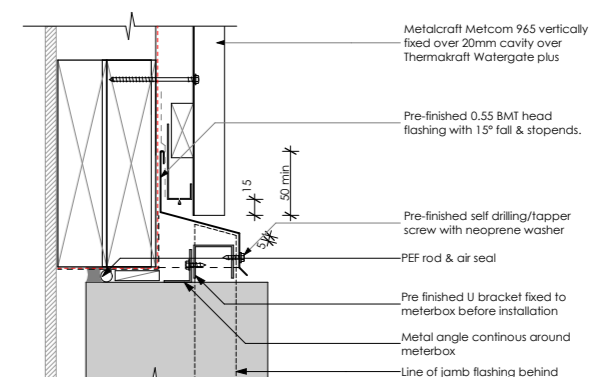
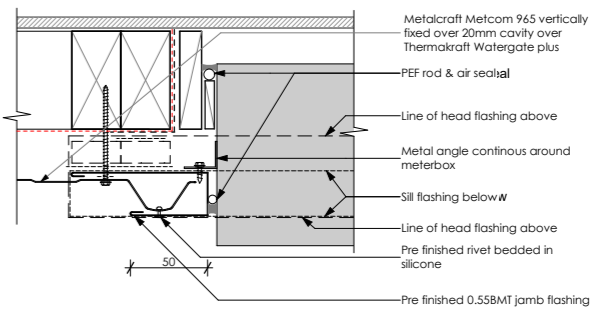
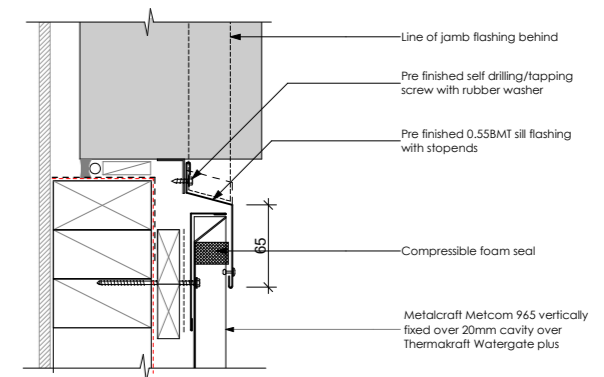
C04 Profiled Metal - External/Internal Corner Detail 1:5



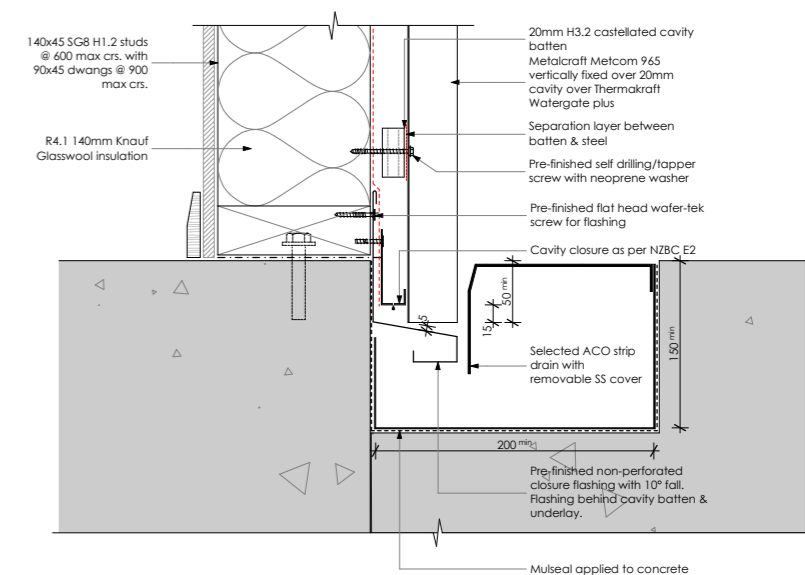
C05 Profiled Metal - Soffit Detail 1:5



C06 Profiled Metal - Foundation 1:5

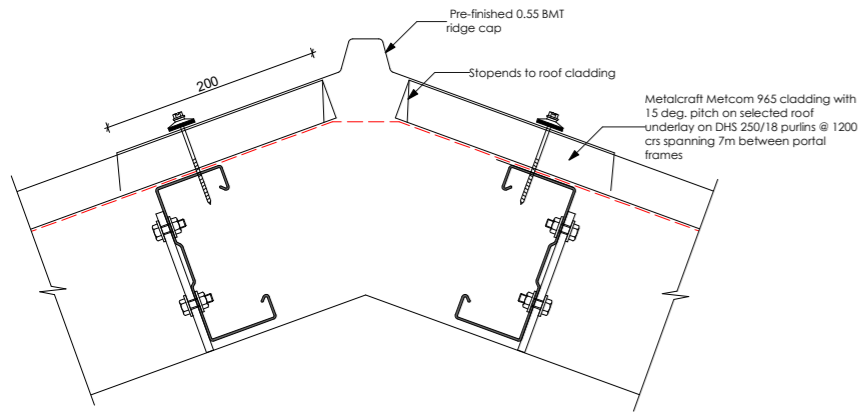


C07 Profiled Metal - Meterbox Penetration Detail 1:5

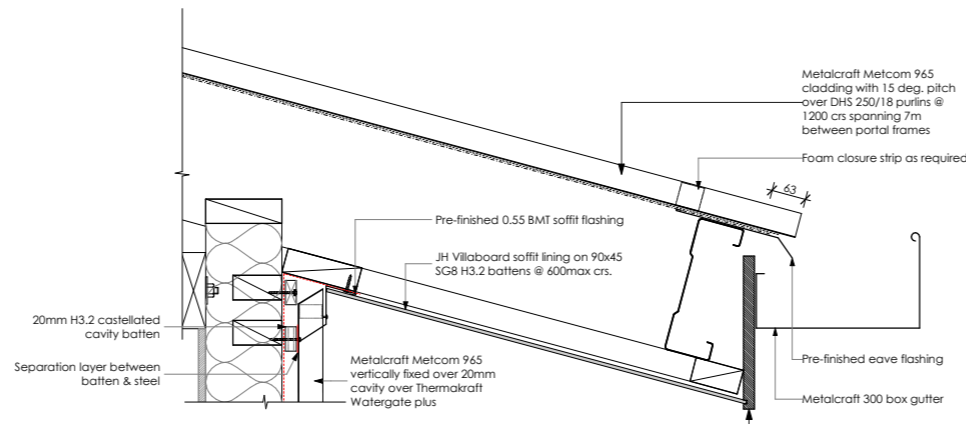


C08 Profiled Metal - Level Entry Foundation 1:5

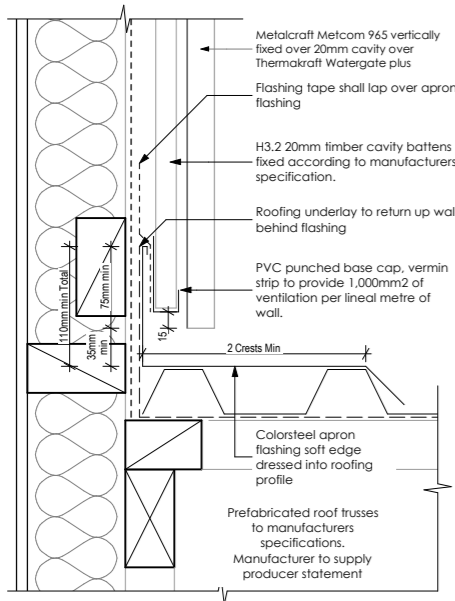




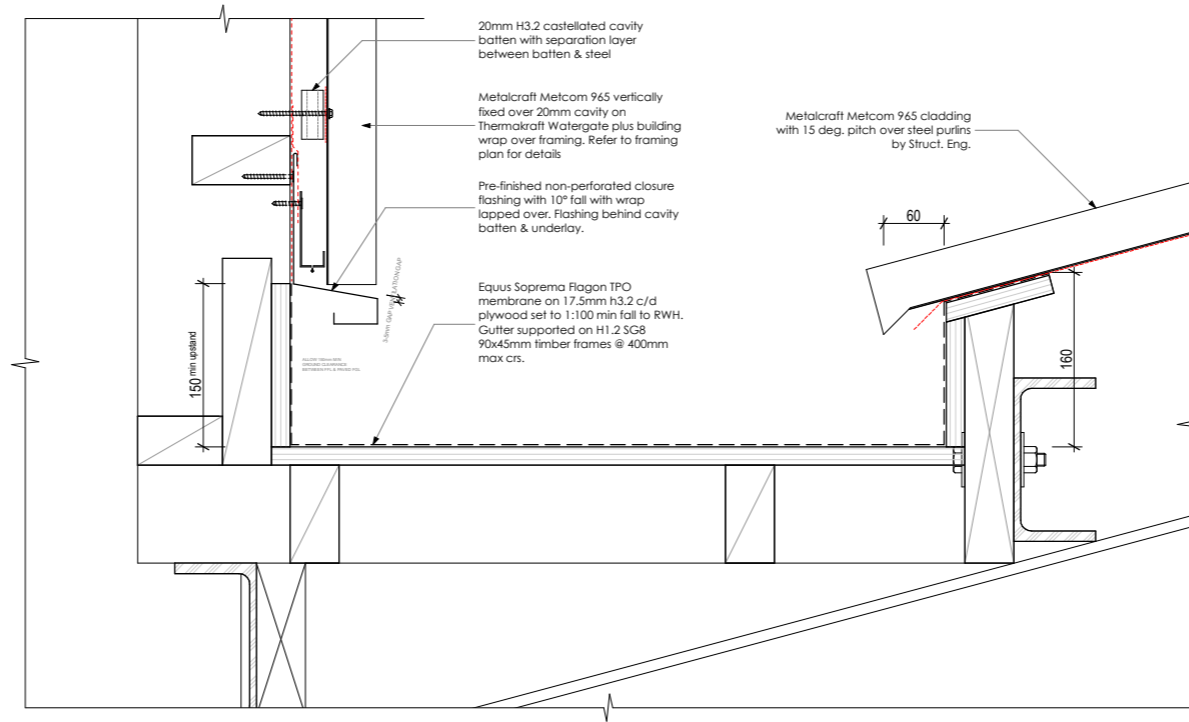
R01 Profiled Metal - Typical Ridge
1:5



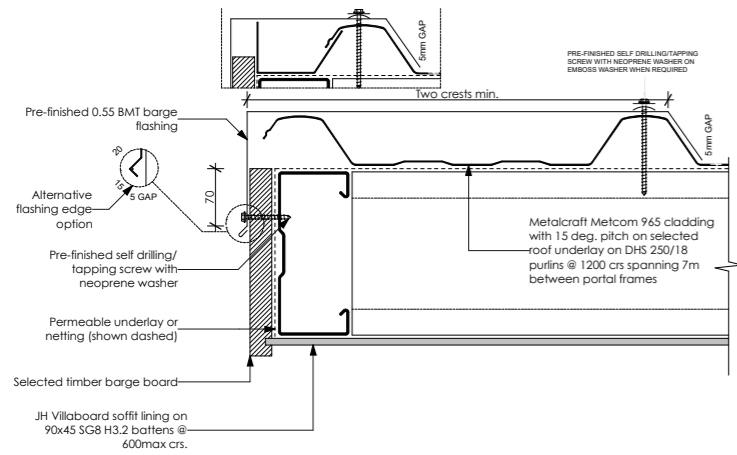
R04 Profiled Metal - Typical Eave and Soffits
1:10



R02 Profiled Metal - Typical Apron Flashing (Parallel)
1:5

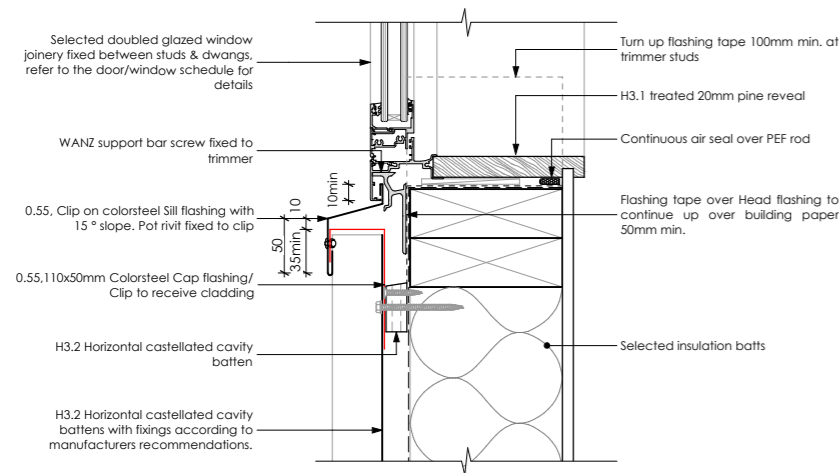
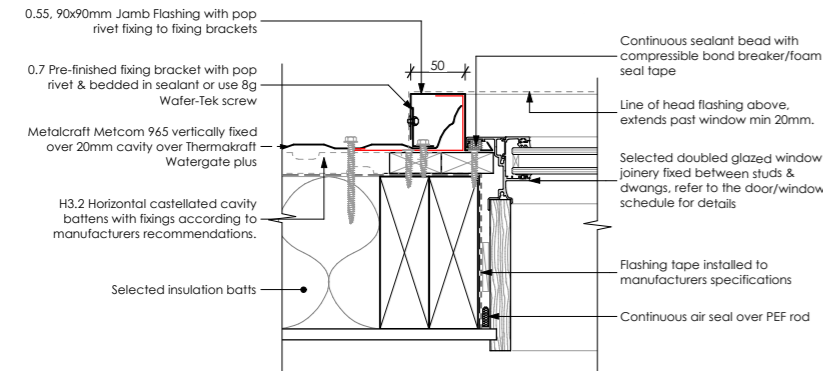
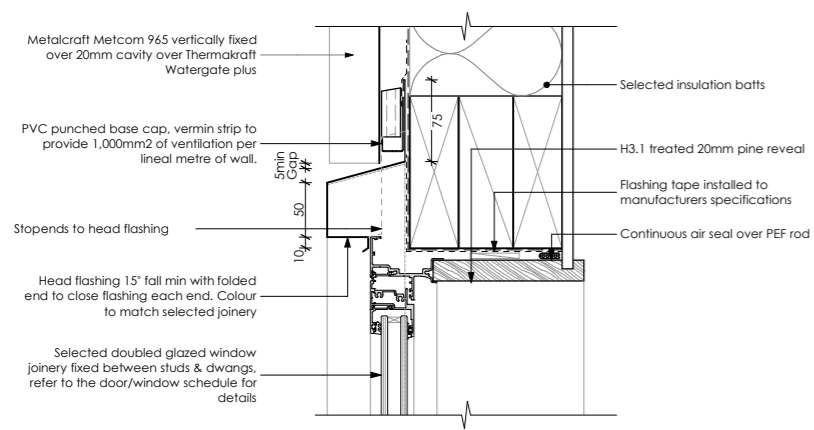


R05 Internal Gutter Detail
1:5

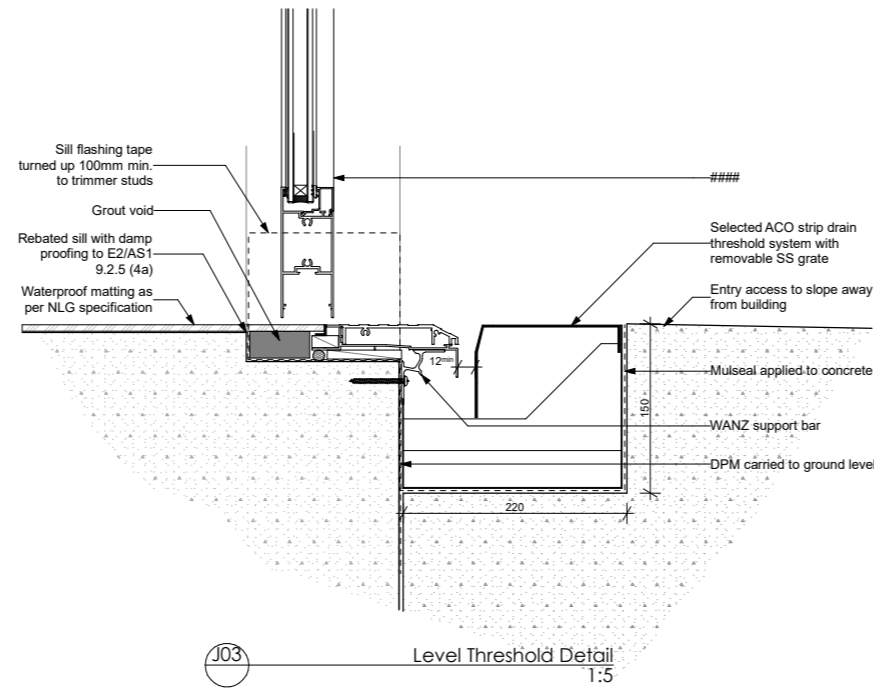


R03 Profiled Metal - Typical Barge
1:5



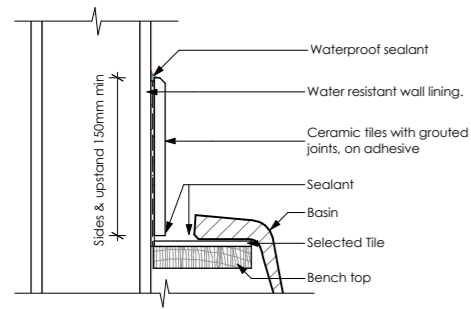


J01 Profiled Metal - Typical Window Head/Sill Jamb Detail
1:5

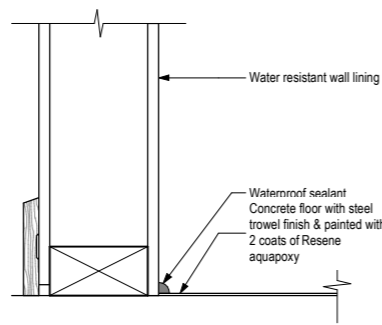


J03 Level Threshold Detail
1:5

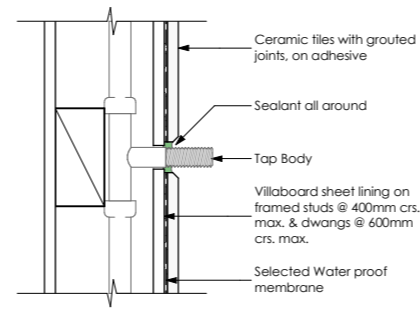




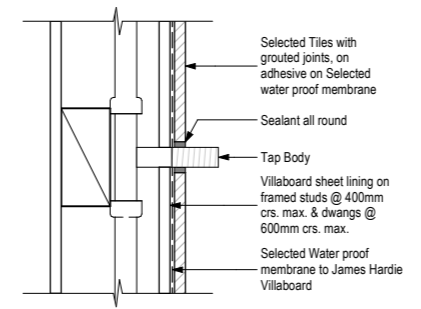
1 Basin Bench to Wall Junction
1:5



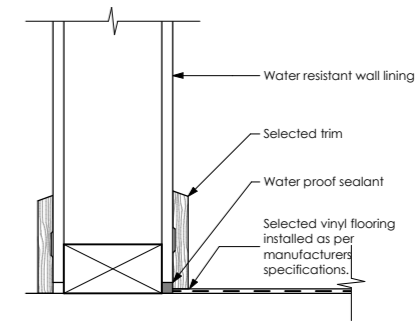
2 Concrete Floor to Wall Junction
1:5



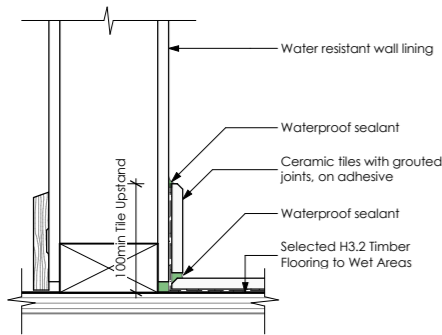
3 Pipe Penetration (Acrylic Shower)
1:5



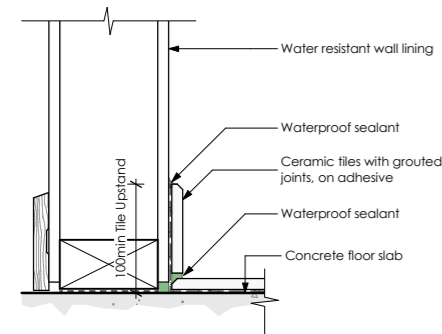
4 Pipe Penetration (Tiled Shower)
1:5



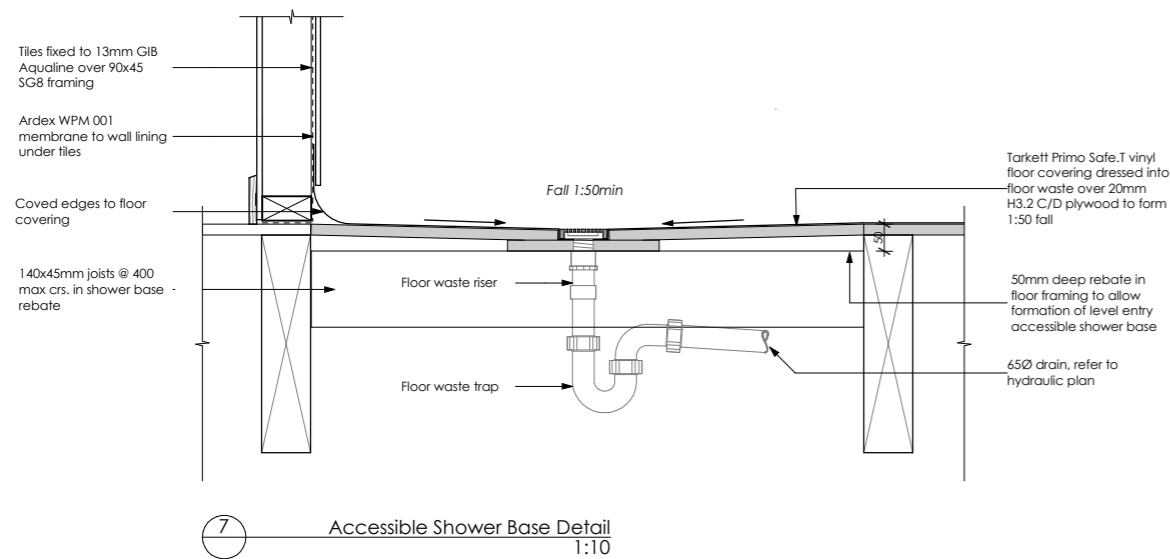
5 Vinyl Floor to Wall Junction
1:5



6 Tile floor to Wall Junction
1:5

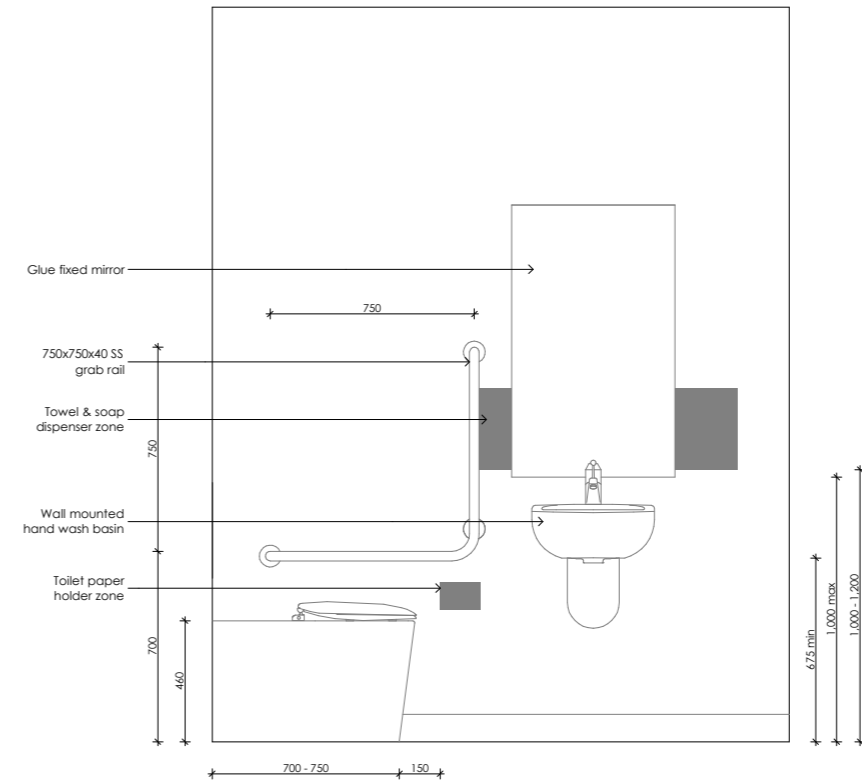
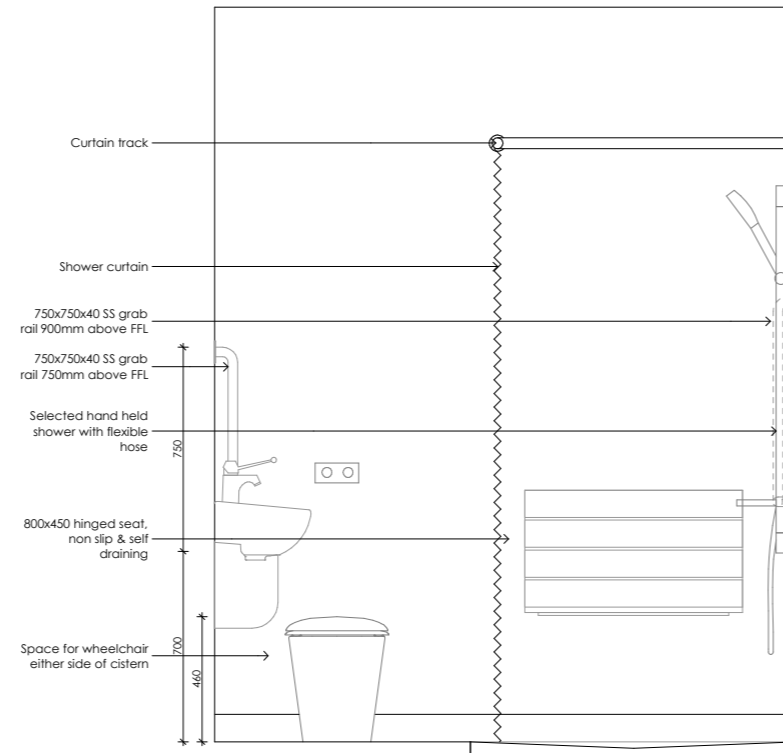
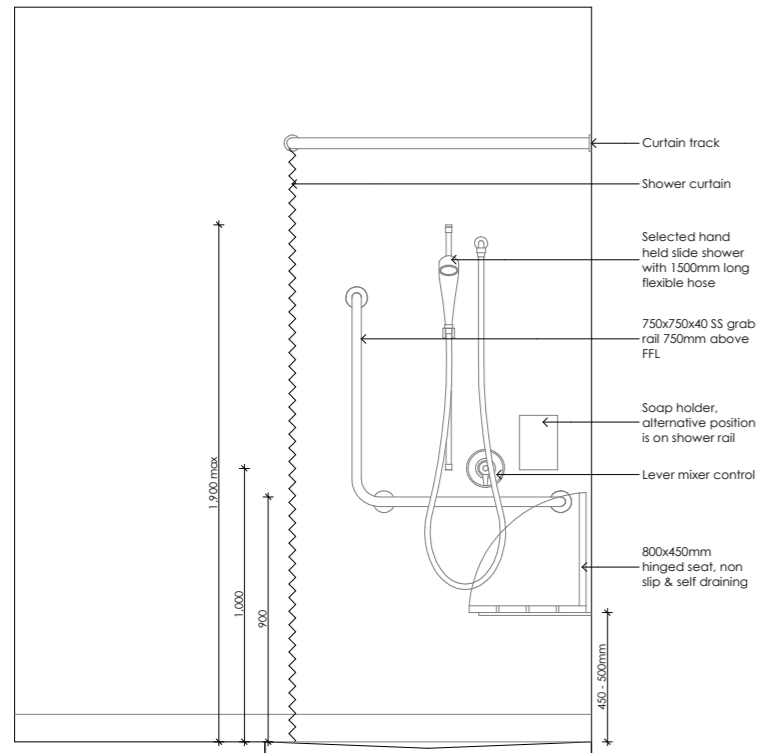
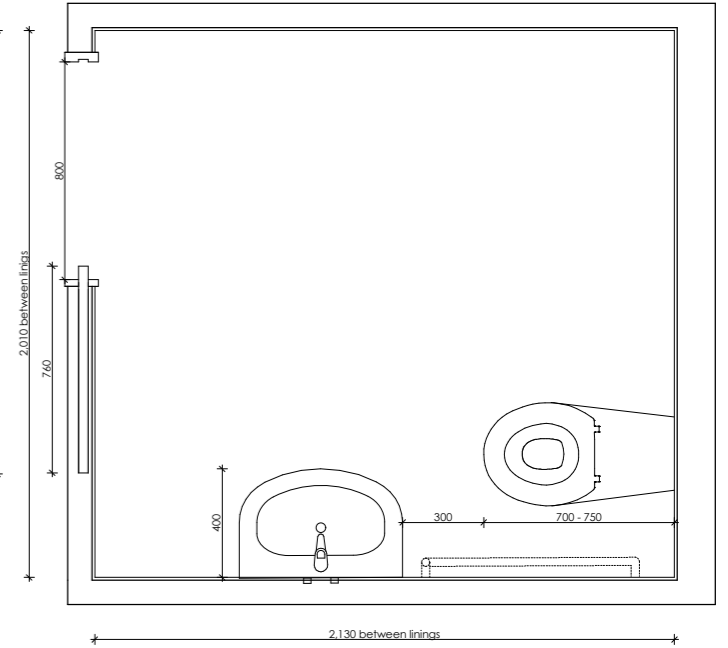
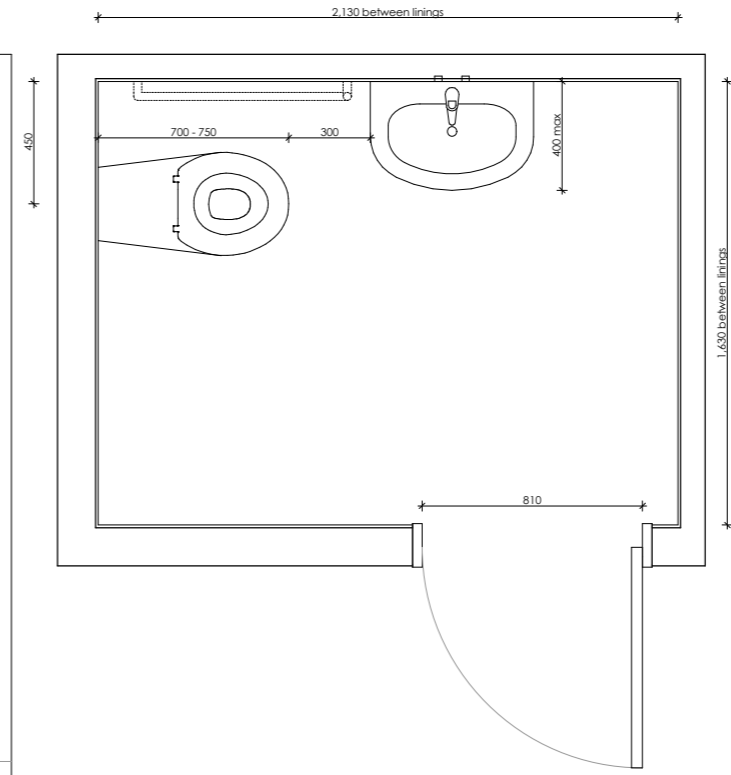
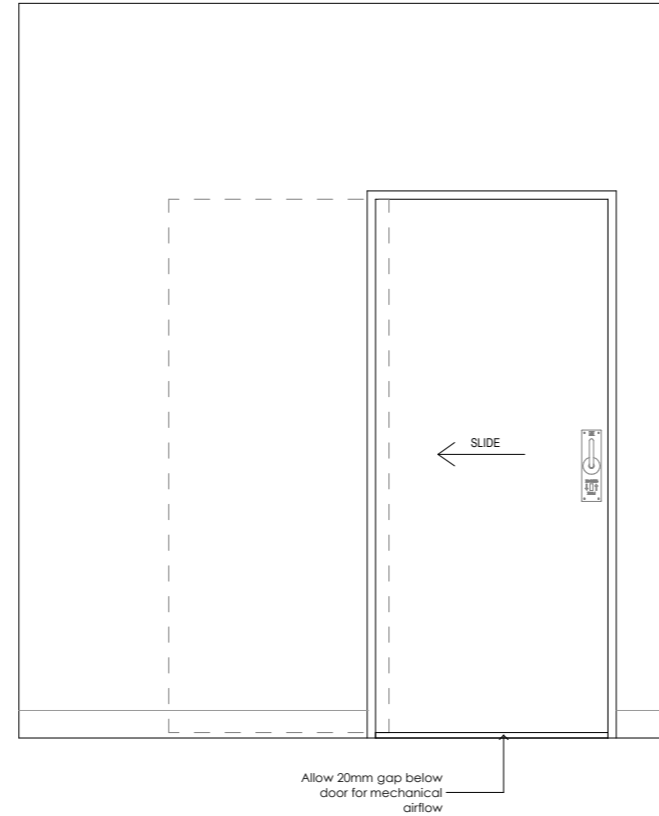
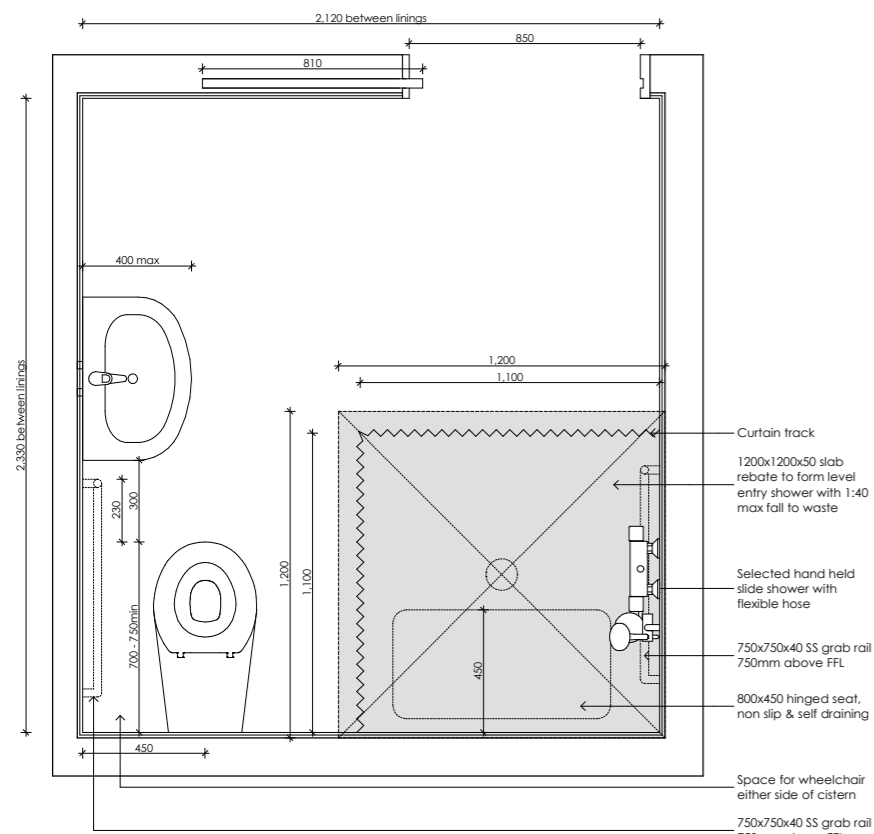


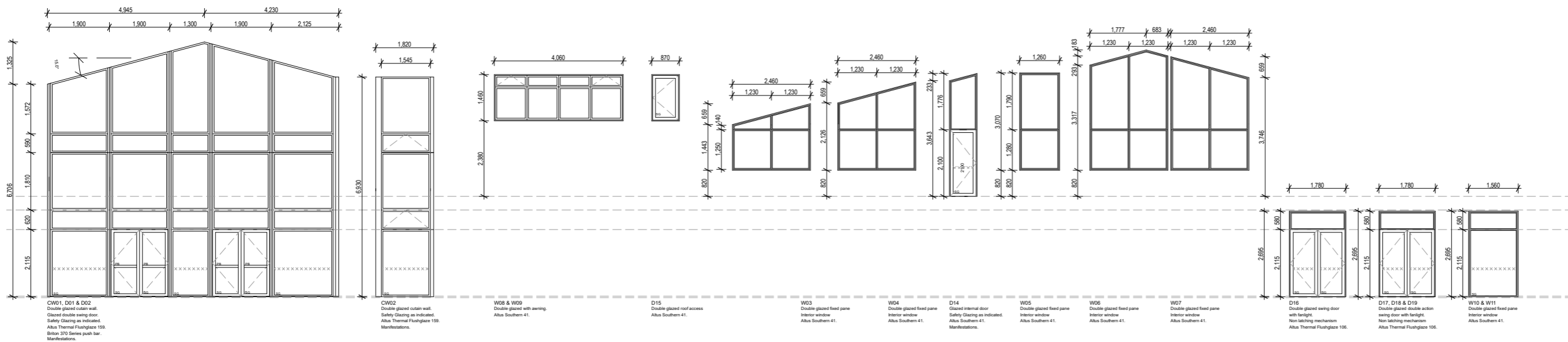
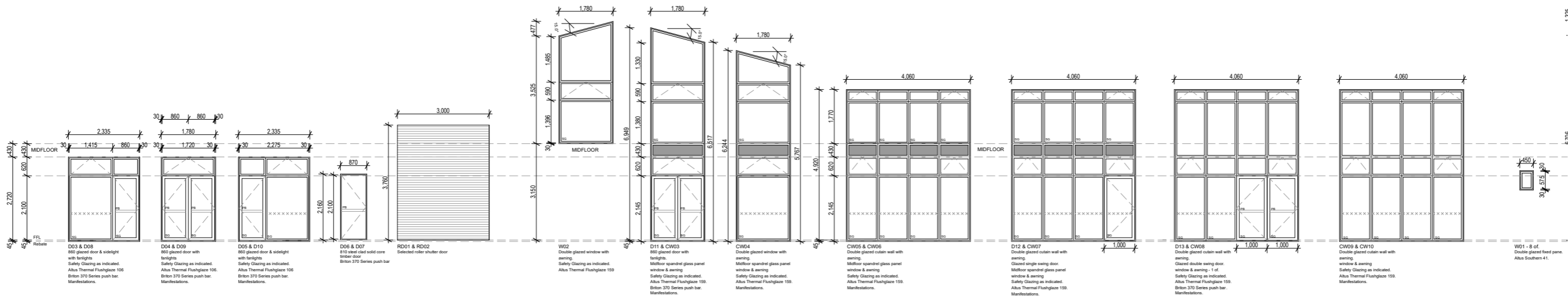
7 Accessible Shower Base Detail
1:10



7 Accessible Shower Base Detail
1:10







ID	ID01	ID02	ID03	ID04	ID05	ID06	ID07	ID08	ID09	ID10	ID11	ID12	ID13	ID14	ID15	ID16	ID17	ID18
Quantity	1	1	1	1	1	1	1	1	1	1	1	1	1	1	1	1	1	1
W x H Size	1,690×2,035	1,690×2,035	1,800×2,100	1,800×2,100	1,800×2,100	880×2,035	1,690×2,035	980×2,035	830×2,035	880×2,035	880×2,035	930×2,035	780×2,035	780×2,035	780×2,035	780×2,035	780×2,035	930×2,035
Orientation	R	L	R	L	L	L	L	L	L	R	L	L	L	L	L	L	L	L
Door head height	2,035	2,035	2,100	2,100	2,100	2,035	2,035	2,035	2,035	2,035	2,035	2,035	2,035	2,035	2,035	2,035	2,035	2,035
2D Symbol																		
3D Front View																		

Door List																		
ID	ID19	ID20	ID21	ID22	ID23	ID24	ID25	ID26	ID27	ID28	ID29	ID30	ID31	ID32	ID33	ID34	ID35	ID36
Quantity	1	1	1	1	1	1	1	1	1	1	1	1	1	1	1	1	1	1
W x H Size	780×2,035	780×2,035	780×2,035	780×2,035	780×2,035	780×2,035	780×2,035	780×2,035	930×2,035	880×2,035	780×2,035	780×2,035	780×2,035	780×2,035	930×2,035	880×2,035	880×2,035	880×2,035
Orientation	R	L	L	L	L	L	L	L	R	L	R	R	R	R	R	R	R	L
Door head height	2,035	2,035	2,035	2,035	2,035	2,035	2,035	2,035	2,035	2,035	2,035	2,035	2,035	2,035	2,035	2,035	2,035	2,035
2D Symbol																		
3D Front View																		

ID	ID37	ID38	ID39	ID40	ID41	ID42	ID43	ID44	ID45	ID46	ID47	ID48	ID49	ID50	ID51
Quantity	1	1	1	1	1	1	1	1	1	1	1	1	1	1	1
W x H Size	6,850×2,035	880×2,035	880×2,035	780×2,035	780×2,035	780×2,035	780×2,035	780×2,035	780×2,035	780×2,035	780×2,035	880×2,035	880×2,035	780×2,035	880×2,035
Orientation	L	R	R	R	R	R	R	R	R	R	R	L	R	R	L
Door head height	2,035	2,035	2,035	2,035	2,035	2,035	2,035	2,035	2,035	2,035	2,035	2,035	2,035	2,035	2,035
2D Symbol															
3D Front View															

