

Before the Hearing Commissioner  
Appointed by Canterbury Regional Council and Selwyn District Council

Under	The Resource Management Act 1991
In the matter of	an application by Southern Screenworks Limited for land use consents and discharge permits associated with the extension of, and changes to, existing quarry operations at 50 Bealey Road, Kirwee

---

**Statement of evidence of Sarah Jayne Bonnington**

**31 March 2025**

---

**Applicant's solicitors:**

Alex Booker | Jen Vella  
Anderson Lloyd  
Floor 2, The Regent Building, 33 Cathedral Square, Christchurch 8011  
PO Box 13831, Christchurch 8141  
DX Box WX10009 Christchurch  
p + 64 3 379 0037  
alex.booker@al.nz | jen.vella@al.nz

**anderson  
lloyd.**

## **Qualification and experience**

- 1 My full name is Sarah Jayne Bonnington.
- 2 I am the Environmental and Compliance Manager for Southern Screenworks Limited (**Southern Screenworks**), and I am authorised to provide this evidence on its behalf.
- 3 I have held this role since November 2018. It involves development, planning, implementing and coordinating health, safety and environmental programmes, driving continual improvement and best practice across these areas of the business, planning for and facilitating training and development opportunities and generally promoting employee well-being and engagement within the organisation.
- 4 I have been in the quarrying industry for 11 years. Prior to my current role, I worked in the mobile crushing team at Fulton Hogan for 5.5 years. Prior to that I trained and worked as vet nurse/rural technician.
- 5 I am currently studying towards a B-grade Quarry Manager Certificate of Competence overseen by the New Zealand Mining Board of Examiners, part of Worksafe | Mahi Haumaru Aotearoa.

## **Scope of evidence**

- 6 My evidence addresses the following matters:
  - (a) Overview of site operations at the existing Aylesbury quarry and cleanfill;
  - (b) Management of environmental effects and compliance at the existing site;
  - (c) Overview of proposal to expand the quarry, including how the transition from the existing quarry to the expansion would occur;
  - (d) Consultation with potentially affected parties; and
  - (e) Matters raised in submissions.

## **Existing quarry and cleanfill operations**

- 7 Southern Screenworks intends to operate the proposed quarry expansion in generally the same way as the existing quarry. The main difference is that there will be no cleanfill in the expanded quarry, and the expansion area will be rehabilitated progressively at a lower ground level. It is therefore helpful to explain how the existing quarry and cleanfill operation works on a day to day basis.

### *Overview of site and key components*

- 8 Southern Screenworks operates Lot 1 DP 345364, Res 4005 and the paper road for quarrying operations. The company holds a wide range of resource consents from both SDC and Environment Canterbury (ECan) for the quarry and cleanfill operation, as well as a mining permit from New Zealand Petroleum and Minerals (NZPAM).
- 9 Res 4005 is owned by Selwyn District Council (SDC) (SDC site), and Southern Screenworks leases the SDC site and the paper road for its operations. Although Southern Screenworks has been quarrying at Aylesbury since approximately 2012, the SDC site had previously been operated by other parties.
- 10 The quarry site is surrounded by other rural-based industries, such as horticulture (cropping) and agriculture activities (dairy, sheep and pig farming). The northern boundary is bordered by State Highway 73 and the railway line. Bealey Road to the south, and Railway and Station roads to the east and north directions are gravel roads. The Aylesbury airfield is also close by. All these activities can generate noise and/or dust from time to time.
- 11 The key components of the quarry and cleanfill site include:
  - (a) quarry face and pit, including stockpiles of aggregate;
  - (b) cleanfill, including a deposition and inspection area;
  - (c) internal haul roads;
  - (d) processing plant (ie., mobile crusher and screener);
  - (e) a concrete pad/ wash bay for Southern Screenworks' vehicles and machinery;
  - (f) a large workshop and site office, which service the whole of Southern Screenworks' business operations;
  - (g) an area for storage of quarry plant and machinery; and
  - (h) other ancillary facilities such as three water carts, four water tanks, storage containers and a diesel storage and refueling facility.
- 12 The site is accessed via a heavy vehicle access only on Bealey Road. The access is sealed for 25 metres beyond the hedge line, which minimises dust generated by trucks entering and exiting the site.
- 13 Since the quarry was established, extensive planting and bunding has been established around the site perimeter to minimise noise, visual and dust effects.

We have also implemented clusters of native plantings and a curved planted bund on the SDC land in front of 23 Bealey Road, and additional planting around the site entrance and main building. This is addressed in further detail below, but the quarry is well screened from roads, the railway line and nearby neighbours.

- 14 Under the current consent, the quarry and cleanfill operates from 7.30 am to 6pm, Monday to Friday and 8am to 1pm on Saturdays, although staff are allowed to arrive and depart outside of those hours. We do not operate on Sundays or public holidays. I understand that the hours of operation were in line with the noise limits of the district plan at the time consent was granted. Southern Screenworks is seeking to align those hours of operation with the Partially Operative Selwyn District Plan which have a slightly earlier start of 7am from Monday to Saturday.
- 15 We do not undertake any blasting. Crushing is limited to four times a year, for three weeks at a time and can only be undertaken from 7.30am to 6pm Monday to Friday. This does create some issues for Southern Screenworks, which I will address in more detail below. This crushing limitation is proposed to be removed, Although Southern Screenworks has offered not to crush on Saturdays as a result of engagement with neighbours.

#### *Quarrying activities*

- 16 We undertake quarrying and cleanfilling in stages of typically around one to two hectares at a time. The reason for that is to minimise the amount of exposed area, which assists to minimise the amount of dust generated on the site overall. The staging approach also ensures that the landscape/visual effects of the quarry are kept to a minimum.
- 17 When moving from one stage to another, we move from an existing stage into the new one so that the new stage commences at the level of the existing quarry floor, which helps to minimise dust and noise.
- 18 Prior to extracting aggregate, the area is prepared by removing topsoil and subsoil overburden material using an excavator and trucks. That material is stockpiled or temporarily banded for future reuse in site rehabilitation. The stockpiles and bunds are compacted and stabilised with grass to reduce exposed unstable soil. We suppress dust using on-site water carts until grass develops and the topsoil stabilises.
- 19 Following preparation of the area, aggregate is extracted from the active quarry face using either a 20-30 tonne front-end loader or a 20-30 tonne excavator. Extracted material is taken from the pit face directly to a mobile processing plant which is located on the pit floor.

- 20 The mobile crushing and screening plant has capacity for dust suppression spray bars, which can be used to dampen aggregate during processing when material from the pit face is not adequately damp.
- 21 Southern Screenworks has 10 mobile crushing and screening plants. We tend to only use one on-site at any time (with the others being used at our river sites). However, we occasionally use two crushers at the same time because specific machinery is used for specialist product. The maximum capacity of our crushing plant is 100 tonnes per hour.
- 22 Under the current consent, crushing is limited to four times a year, for three weeks at a time. This can sometimes cause issues for Southern Screenworks because we sell a variety of products but can only stockpile 10,000m<sup>3</sup> at a time. This means that it can be difficult to maintain an adequate supply of products in between crushing periods, and, on occasion, we have run out. In addition, we do not always crush for 3 weeks at a time – for example, if we commence crushing, but the weather conditions require us to stop for a period of time, we lose some days for that period that we are not able to gain back at another time. In this application we are proposing to remove that restriction.
- 23 Once processed (i.e., screened and crushed), material is stockpiled on the quarry pit floor. Some material may be stockpiled without being processed, for sale as pit-run material. The stockpiles are no higher than natural ground level, and they are shaped to ensure they are stable to minimise windblown dust and visual effects.
- 24 Aggregate is then ready for sale. Customers that arrive at the site proceed to the stockpile area on the quarry pit floor to be loaded at the trade weighing system. They follow a one-way system around the site, and then exit via the site access. We keep a log of all traffic entering and exiting the site.

#### *Cleanfill activities*

- 25 While the proposed expansion does not include any cleanfilling activity, I have provided a brief overview of how the cleanfill aspects of the site work for completeness.
- 26 Cleanfilling on the current site will continue even once aggregate on the existing quarry site is exhausted. The whole site will eventually be clean filled, and the staging of the clean fill follows the staging of quarrying. At this point in time, 9 ha has been filled and rehabilitated, based on current fill rates it will take just under 30 years to fill the current land available for quarrying.
- 27 Once customers arrive with a load, they are taken to the cleanfill deposition and inspection area adjacent to the working quarry pit - we call this area the 'tip-head'. Only acceptable cleanfill is allowed into the active cleanfill operation area.

- 28 Loads are deposited and inspected in the inspection area and, if found to be suitable, are pushed directly into the pit. A water cart is used around the active face of the cleanfill area when placing dusty loads or during dry periods to reduce the potential for dust generation.
- 29 Once the quarrying and cleanfill stage is close to completion, new bunds are constructed to adjoin the existing bunds, and the bunds around the completed area are removed. That stage is then rehabilitated. It is initially covered with an intermediate cover until a sufficient area is available to achieve the final landform slopes and drainage. At that time, a final cover comprised of top soil, pasture and vegetation is placed over the area and replanted in the next growing season.

### **Management of environmental effects and compliance**

- 30 The main potential environmental effects associated with the Aylesbury Quarry and the cleanfill operations are largely amenity related, and include dust, noise and landscape/visual effects. Southern Screenworks takes great pride in its operation and site appearance - we work hard to keep the site as tidy as possible and, as Mr King emphasised, we strive to be a good neighbour.
- 31 This section of my evidence sets out how Southern Screenworks approaches the management of these potential effects, along with health and safety requirements and compliance with its resource consents.

#### *Site management plan*

- 32 The quarry and cleanfill operate in accordance with a site management plan. The site management plan sets out operational procedures to ensure that we operate in accordance with the consents and appropriately manage potential effects. It addresses matters such as dust management, formation of bunds, management of vehicles using the site and maintenance of haul roads and landscaping.
- 33 All staff receive training to ensure that they are familiar with the requirements of the site management plan.

#### *Landscaping and bunding*

- 34 Screenworks has undertaken significant plantings for the purposes of managing potential effects on amenity, such as minimising dust and noise, and screening the quarry from roads, the railway line and neighbouring properties.
- 35 We maintain perimeter planting of a cypress hedge at 4m high around most of the site. The exception to this is in the northern corner of the site, which is maintained at 2.5m high to allow distant views to the Southern Alps. The cypress hedge grows well and provides a thick screening. We keep the planting and bunding around the site boundaries and entrances in a tidy condition at all times, and replace trees

when they are not thriving. Plantings are watered as required to accelerate grass and plant growth.

- 36 This means that the quarry is well-screened from Bealey Road, and people sometimes tell us that the only sign of the quarry from the road is the sign at the entrance. The quarry and cleanfill pits themselves, and stockpiles of aggregate, are well set-back from the road behind the workshop, so they cannot be seen from Bealey Road.
- 37 The quarry was also well screened from State Highway 73 until the summer of 2023 / 2024, when fires burned the cypress hedge along the railway line. The fire was extinguished with the help of Southern Screenworks' water carts. We replanted those trees soon after the fire, and they are now growing strongly.
- 38 Over time, we have enhanced planting and bunding around the site through planting additional native and exotic trees and further bund development. We are conscious that bund construction can generate additional dust, and so we have covered bunds in a geofabric wool mesh in some instances, to minimise dust while the shrubs and trees establish.

#### *Dust management*

- 39 We actively manage dust on site on a day to day basis using a variety of measures.
- 40 Dust is minimised through measures such as:
- (a) limiting the speed of vehicles on site;
  - (b) keeping the sealed main entrance to the site clean and free of dust;
  - (c) stripping topsoil in stages to minimise exposed areas where windblown dust could arise;
  - (d) only undertaking topsoil stripping during suitable weather conditions which takes into account ground moisture and wind strength and direction;
  - (e) Dampening open areas when required (eg removal of topsoil, haul roads, etc) using a water cart.
  - (f) Re-grassing or otherwise stabilising exposed surfaces (through the use of dust suppressants or pea gravel) as soon as practicable to minimise dust emissions from vehicle movements and wind; and
  - (g) Dampening dusty loads.
- 41 A full water cart is always available on site for the purposes of dampening open areas if/when required.

- 42 A daily visual inspection is undertaken each day and observations are recorded. In addition, staff are trained to keep an eye on potential dust emissions throughout the day. If they observe a change in weather conditions or see dust being emitted from open areas, they will alert me or other senior management and ordinarily immediately apply water to the area themselves. If dust is clearly visible and crossing the site boundary, or if wind is strong, we cease operating.
- 43 As part of Screenworks' commitment to best practice, we installed a dust monitoring system in February 2024, which is capable of sending alerts to me when wind conditions may warrant applying additional dust suppression measures or temporarily ceasing dust generating activities. This system has been collecting data over the last year – how the system works and the results of monitoring is addressed in more detail in Mr Bluett's evidence. Mr Bluett has advised us that our dust management measures are working well.

#### *Managing noise on site*

- 44 We take additional practical measures to reduce noise generated on site, including:
- (a) locating processing equipment (ie mobile crusher) on the quarry floor;
  - (b) maintaining our quarry haul roads to minimise potholes;
  - (c) regularly maintaining heavy vehicle and crushing equipment in our workshop to ensure they are running efficiently – this helps to minimise both noise and exhaust emissions; and
  - (d) training our staff to operate machines in a considerate manner such as not dragging buckets or chains but rather placing attachments on the ground.
- 45 We used to store our trucks and machinery on the SDC quarry land in the south-west corner of the site. However, we are aware from discussions with our neighbour at 23 Bealey Road that this can on occasion create undesirable noise for them and sometimes additional dust. We are therefore in the process of moving these trucks and machinery away from this area, so any noise generated will be further sheltered by our workshop/office building. We have already moved the machinery to our purpose-built hardstand, and in the winter of 2025 we will create an area for the truck and trailers, when conditions are appropriate for stripping topsoil.

#### *Hazardous substances*

- 46 We have a 27,000L diesel tank on site for the purposes of refuelling, along with flammable substances and small amounts of petrol. The diesel tank is located on a concrete pad to ensure that any spillages can be contained. The tank has a test



certificate and Screenworks holds a location compliance certificate for the flammable substances.

- 47 We occasionally need to refuel generators for the processing plant on the quarry floor, which is undertaken using a 2000L mobile diesel trailer.

#### *Health and safety – industry best practice*

- 48 Southern Screenworks follows the WorkSafe New Zealand 'Good Practice Guidelines for Health and Safety at Opencast Mines, Alluvial Mines and Quarries'. These comprehensive guidelines were put together in consultation with industry stakeholders, including the Aggregate and Quarry Association of New Zealand (AQA), the Institute of Quarrying New Zealand, and the MinEx Health and Safety Council Inc (MinEx).
- 49 The guidelines give practical advice on health and safety controls and measures at opencast mines, alluvial mines and quarries. Although not primarily focused on environmental matters, many of these guidelines do also manage and reduce environmental effects, such as nuisance dust and noise.
- 50 I have been involved over the years in developing Southern Screenworks' health and safety systems and procedures. Health and safety is everyone's responsibility on the site, and that is clearly understood by Southern Screenworks' employees. We have a worker health plan, and carry out annual health checks and silica exposure monitoring every 5 years.

#### *Complaints*

- 51 We currently maintain a complaints register for our business as a whole, but have never had a complaint made to us about the quarry.
- 52 My understanding is that quarry has only had one complaint made to either to SDC or ECan over the last 12 years of operations. That complaint related to the imported fill material which exceeded the appropriate cleanfill levels, as described in Mr King's evidence. To my knowledge no other complaints have been received, including in relation to dust, noise or traffic.

### **Proposed expansion of the quarry**

#### *Overview*

- 53 Southern Screenworks is proposing to expand the quarry activities to two adjacent sites – Lot 2 596079 and Res 4005 – which are owned by the company or related entities. It is proposed to continue to operate the quarry as we currently do (subject to some minor changes) on the new sites. New haul roads will be required to enable this to occur. Southern Screenworks does not intend to significantly increase the

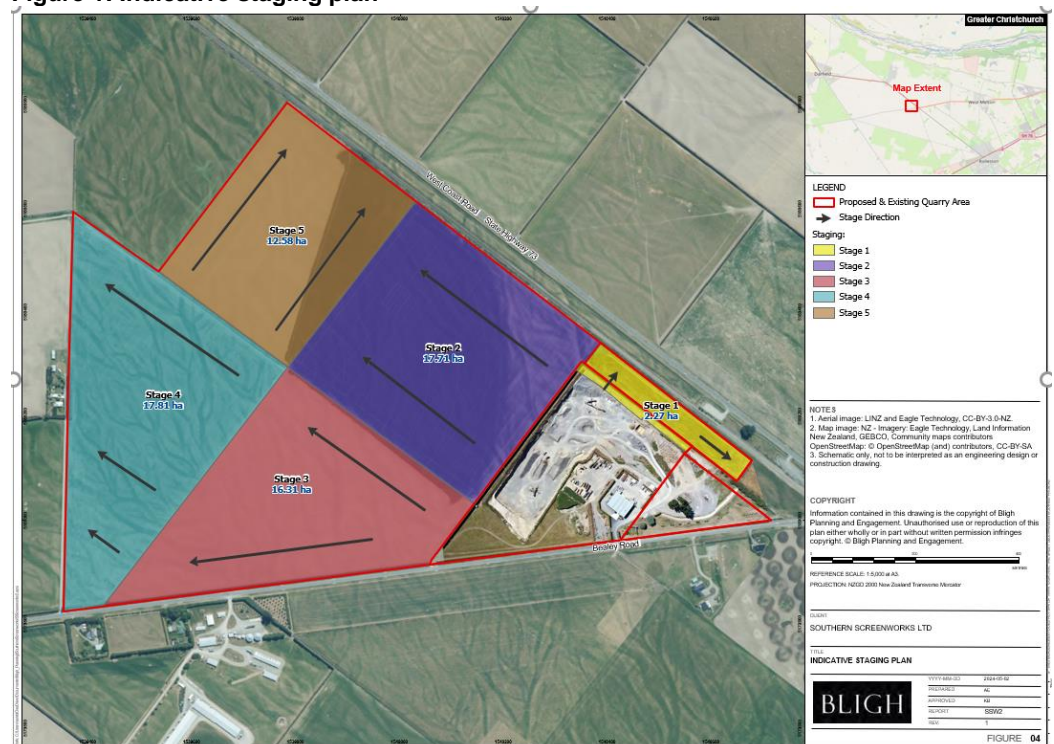
scale or intensity of quarrying activities, although we do propose some changes to the way we operate the quarry in order to provide some flexibility. These are addressed below. Heavy vehicle movements will remain the same (other than the occasional movement of two transporters, addressed further below).

- 54 All of the existing infrastructure – such as the workshop, office, wash bay and water storage tanks – will remain on the existing site. Cleanfilling activities will also be restricted to the current site (Lot 1 DP 354364) and no cleanfilling will occur in the expanded area. The only exception to this is that we may bring some clean imported topsoil to the site if required to assist in site rehabilitation. This would only occur if inadequate topsoil was available on the site at a time of needing to apply a final topsoil layer to a completed quarry stage.

#### *Staged quarrying and rehabilitation*

- 55 We intend to continue the staged approach to quarrying and progressive rehabilitation of extraction areas. An indicative staging plan for the expansion area is shown in Figure 1, below. No more than 6 hectares of active quarry area across both the existing quarry/ cleanfill and the expansion area will be open at any one time, including haul roads.

**Figure 1: Indicative staging plan**



- 56 Figure 1 shows that Stage 1 of the quarrying activities will extend into Res 4005 to the northwest of the existing site. This area is around 1.8 ha and we expect that it will take around 12 – 18 months to extract the aggregate from that area. Following the pre-hearing meeting, Screenworks has agreed not to quarry within 150m of 23

Bealey Road (unless written approval has been obtained from the landowner), so part of this parcel will not be quarried. During Stage 1, the extracted material will be transported to the existing processing area located within the existing quarry, and be processed and stockpiled.

- 57 Following Stage 1, quarrying will move to Stage 2, to the east of the existing quarry. From this point on, both aggregate extraction will be further away from 23 Bealey Road than it is now. During the initial part of Stage 2, material will continue to be processed and stockpiled in the current location but will subsequently be processed in Stages 2 and 5.
- 58 It is not anticipated that quarrying will reach Stages 3 and 4 for over 15 years.
- 59 It was initially proposed that, following the initial part of Stage 2, the mobile crushing plant would move closer to the area being excavated. However, Screenworks has agreed, following the pre-hearing meeting, that no processing will be undertaken in the area identified for Stages 3 and 4, in order to further reduce potential noise effects on 137 and 153 Bealey Road.
- 60 While stripping of new stages of extraction will occur at ground level, the aggregate will be accessed by excavating through existing quarry pit walls and will therefore occur below ground level. Some changes to existing bunding and landscaping will be required, which are addressed by Ms Crawford.
- 61 Rehabilitation will involve spreading overburden, cleaning reject aggregate, and stored topsoil and subsoil materials within the base of the quarry floor. Bunding will be graded back to 1:3 to the bottom floor of the quarry. While all cleanfilling will only occur on the existing quarry site and not the expansion area, clean topsoil may be used to assist with rehabilitation if required.

#### *Setbacks*

- 62 Southern Screenworks initially proposed to quarry the entire expansion area, except within 100m from nearby residences and 50m from water races. Quarrying will also be set back 10m from the site boundary.
- 63 In response to submissions and following the pre-hearing meeting, Southern Screenworks has agreed that no extraction occur within 200m of 137 and 153 Bealey Road, and 300m on Saturdays, unless written approval has been obtained from the landowner. As noted above, we have also agreed not to extract within 150m of 23 Bealey Road unless written approval is obtained. The reason for the difference in proposed setbacks is to address the specific requests of each submitter.

- 64 Southern Screenworks has been advised that these extended setbacks are not required for the purposes of mitigating adverse effects of either noise or dust to an acceptable level, but has offered to limit quarrying in those areas in response to requests made by its neighbours.
- 65 We have also agreed not to crush in Stages 3 and 4 as a result of discussions at the pre-hearing meeting. We do still need to crush on the existing site in Stage 1 and part of Stage 2, however this is already authorised by our existing consent.

#### *Dust management*

- 66 Dust will be managed in accordance with a dust management and monitoring plan. Southern Screenworks has recently invested in a dust monitor, which has been in operation since February 2023. We have also committed to purchasing a second dust monitor, which will be located between the source of the dust and residential dwellings where appropriate. Mr Bluett will address this in more detail.
- 67 We have also agreed to further dust mitigation measures in response to specific submissions, which are addressed below.

#### *Crushing and screening*

- 68 Crushing and screening will continue to be undertaken by one of our mobile screening and crushing plants, as it is currently. As noted above, we occasionally use two crushers. We have proposed conditions to limit the use of two crushers to 10 times a year. One of our crushers runs off a modern diesel generator.
- 69 The current consents limit crushing to four times a year, for three weeks at a time, on weekdays only. For the reasons set out above, Southern Screenworks proposes that crushing is not limited to four times a year (and seeks a corresponding change to the existing consent for consistency). This restriction severely limits the range of products that can be produced throughout the year and creates unnecessary production and traffic peaks.
- 70 Removing those limitations will provide us with flexibility to ensure that we are able to respond to market demand by ensuring our full range of products are available when required.

#### *Hours of operation*

- 71 Southern Screenworks seeks that the hours of operation (except as set out below in relation to the movement of transporters) for the quarry be:
- (a) 7am – 6pm Monday to Friday;
  - (b) 7am to 1pm Saturday.

- 72 This aligns with the noise limits in the Partially Operative Selwyn District Plan and allows staff and contractors to move through high peak traffic. We do not intend to operate on Sundays or public holidays.
- 73 Southern Screenworks has also agreed as a result of the pre-hearing meeting with submitters that it will not crush aggregate on Saturdays.
- 74 We seek amendments to the existing consent for consistency.

#### *Movement of transporters*

- 75 Southern Screenworks' operates two transporters. These are large vehicles used for transporting heavy plant and machinery. There are restrictions/curfews on times that transporters can move through main centres mostly because of their dimensions. Therefore, for us to move machinery from the quarry to the site at which it will be used (eg a riverbed), the transporters sometimes need to operate outside normal operating hours. It is not often that we need to move machinery at this time, but this depends on the location of our jobs.
- 76 We are therefore seeking that they be able to arrive or depart the quarry between 6am and 7am. We also seek amendments to the existing consent for consistency.

#### *Volume of stockpiles*

- 77 The current consent limits the volume of stockpiles from 10,000m<sup>3</sup>, however we seek that stockpiles be limited to 25,000m<sup>3</sup> for both the existing and expansion consent. That is to enable us to keep sufficient volumes of the wide variety of products we produce in order to meet market demand.

#### *Maximum volume of extraction*

- 78 We are not proposing a maximum volume of extraction on the expansion consent and seek changes to the existing air discharge consent to remove the maximum of 30,000m<sup>3</sup> per year. That is because we have proposed a maximum number of heavy vehicle movements and stockpile volume that control the effects of aggregate extraction.

#### **Consultation with potentially affected parties**

- 79 Southern Screenworks' approached a number of our local neighbours directly either by phone, in person or via a letter, to consult them about the proposed quarry expansion. Initial consultation related to a wider proposal that included a managed fill, however as Mr King has addressed, that application was withdrawn and replaced with this one. We had further discussions with many neighbours about the expansion proposal, which resulted in written approvals being obtained from five neighbours and the purchase of 158 Bealey Road.

- 80 We also approached rūnanga (via Mahaanui Kurataiao Ltd) before the application was lodged and we subsequently provided a response to their cultural report. On both occasions we offered to discuss the application, but unfortunately they did not take up that opportunity. While we advised the rūnanga that Southern Screenworks would not accept a 20 year duration (particularly on the land use consent), we have offered to undertake ongoing consultation with rūnanga regarding future changes to site operations if they wish. We also offered to discuss how we may incorporate indigenous planting through a rehabilitation plan. We have had no response to those offers.
- 81 Consultation on the proposed expansion resulted in Southern Screenworks agreeing to purchase the property at 158 Bealey Road, given the proximity of that property to a large part of the overall expansion.
- 82 Following the close of submissions, we engaged directly with the New Zealand Transport Authority (NZTA), KiwiRail and the owners of 137 Bealey Road (Ben and Julie Voice). Southern Screenworks also requested the councils invite the owners of 23, 137 and 153 Bealey Road to a pre-hearing meeting and, if desirable, a site visit. That meeting was held on 11 March 2025 at the West Melton Community Centre and was attended by the owners of 23 and 153 Bealey Road and a legal representative for 137 Bealey Road. Council officers and experts also attended that meeting. No parties chose to undertake a site visit.
- 83 As a result of the consultation outlined above, Southern Screenworks has proposed to make a number of changes to the proposal from that which was first lodged. Conditions being offered by Southern Screenworks are set out in relation to each submitter below. Southern Screenworks appreciates the constructive way in which our neighbours have engaged with us, and thank them for their approach.

*Te Taumutu Rūnanga*

- 84 Southern Screenworks agrees to:
- (a) the condition relation to an accidental discovery protocol; and
  - (b) undertaking appropriate dust management measures, through a management plan.
- 85 As noted above, we have offered to discuss the proposal with rūnanga, including matters relating to on-site operations and indigenous planting, however we have had no response.

*KiwiRail*

- 86 Southern Screenworks agrees to the condition sought by KiwiRail to limit the number of heavy vehicle movements to 80 per day (40 in and 40 out) and a

maximum of 120 heavy vehicle movements. We have advised KiwiRail of that agreement.

*NZTA*

87 Southern Screenworks has contacted NZTA to propose the following conditions to address their submission:

- (a) establish bunding along the full northern boundary of proposed Stages 1 and 2, adjacent to State Highway 73; and
- (b) cease extraction, crushing and screening within 100m of the northern site boundary when wind speeds from the south and south-west directions (155 to 255°N) are equal to, or exceed, 7.5m/s as a one-hour average during dry weather conditions.

88 NZTA has not responded to this offer.

*Ben and Julie Voice – 137 Bealey Road*

89 Southern Screenworks has proposed the following in response to the Voices' submission:

- (a) 200m setback from the notional boundary of the primary residence at 137 Bealey Road for extraction unless we obtain their written approval;
- (b) 300m setback from the notional boundary of the primary residence at 137 Bealey Road for extraction on Saturdays unless we obtain their written approval;
- (c) No crushing to be undertaken in Stages 3 and 4; and
- (d) No crushing on the weekends.

90 The submitter has not advised whether these conditions address their concerns at the time of writing this evidence.

*Dion Coleman – 153 Bealey Road*

91 Southern Screenworks has proposed the following in response to the Colemans' submission:

- (a) 200m setback from the notional boundary of the primary residence at 153 Bealey Road for extraction unless we obtain their written approval;

- (b) 300m setback from the notional boundary of the primary residence at 153 Bealey Road for extraction on Saturdays unless we obtain their written approval;
  - (c) No crushing to be undertaken in Stages 3 and 4;
  - (d) No crushing on the weekends;
  - (e) A double row of planting outside 153 Bealey Road to the existing farm gate, for 50m along the boundary with 158 Bealey Road, as shown on the landscape plans attached to Ms Crawford's evidence;
  - (f) An additional bund in the south-west corner of the site outside 153 Bealey Road and an additional visual screen (bund or plantings) behind the current farm entrance once Stage 3 commences, as shown on the landscape plans attached to Ms Crawford's evidence; and
  - (g) Removing the existing bracken and gorse along the roadside opposite the property and retaining the eucalyptus, flax and pittosporum.
- 92 The submitter has not advised whether these conditions address their concerns at the time of writing this evidence.

*Lou Nunn – 23 Bealey Road*

- 93 Southern Screenworks has proposed the following in response to Mr Nunn's submission:
- (a) 150m setback from the notional boundary of the primary residence at 23 Bealey Road for extraction unless we obtain their written approval;
  - (b) No crushing on the weekends;
  - (c) Move trucks and machinery off the SDC land opposite 23 Bealey Road after the winter period, when weather conditions are appropriate for stripping a new area to create a new hardstand; and
  - (d) Undertake additional planting and grassing on the SDC land opposite 23 Bealey Road if approval can be obtained from SDC (as landowner) to do so, as shown on the landscape plans attached to Ms Crawford's evidence.
- 94 The submitter has not advised whether these conditions address their concerns at the time of writing this evidence.



### **Matters raised in submissions**

- 95 The only additional comments I wish to make in relation to matters raised in submissions are as follows:
- (a) There will be no increase in heavy vehicle movements – heavy vehicle movements will remain the same with the exception of the occasional movement of the two transporters (Nunn, Wiig submissions).
  - (b) There are no new operations proposed, including truck wheel/bed wash facility, haul road and general storage, for the site opposite 23 Bealey Road (Nunn submission).
  - (c) It is not clear when the photograph of dust on Bealey Road (Nunn submission) was taken, therefore I have not been able to verify what was occurring on site at that time. However, the dust appears yellow/ brown in colour, whereas quarry dust is grey. There are other dusty activities that occur from time to time on land surrounding our site, including cropping for example.
  - (d) Screenworks does not have a no complaints covenant with any of our neighbours (Coleman submission);
  - (e) Screenworks does propose to comply with relevant setbacks and noise standards other than where written approval from landowners is obtained (Wiig submission).

**Sarah Jayne Bonnington**

31 March 2025