

# Perspective Render - From Levi Road



# Perspective Render - From Lincoln-Rolleston Road





Perspective Render - From Levi Road and Lincoln-Rolleston Road intersection





# Elevation Render - North-East View - Option A

Proposed landscaping and boundary interface should the adjacent land to the east remain in the General Rural Zone under the PSDP.



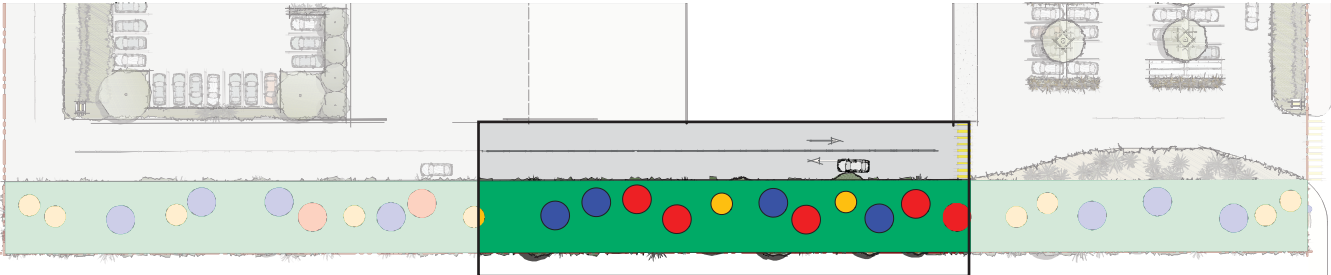
Planting shown at 10 year growth  
Mountain Beech (6m high), Ribbonwood (8m high), Kowhai (8m high) and Cabbage Trees (8m high).



Planting shown at maturity (30 years+)  
Mountain Beech (12m high), Ribbonwood (12m high), Kowhai (8m high) and Cabbage Trees (10m high).

NOTE:  
The render shows a 2.0m high acoustic timber fence on top of a 0.6m high retaining wall on the eastern boundary.  
The tree planting includes: Mountain Beech (red dot), Ribbonwood (blue dot), Kowhai (yellow dot) and Cabbage Trees (interspersed).  
The shrub planting includes a mix of tall and short shrub planting and groundcovers.

Note: the existing hedgerow in the neighbouring property would soften views of the boundary fence and retaining wall.





# Elevation Render - North-East View - Option B

Proposed landscaping and boundary interface should the adjacent land to the east be rezoned to General Residential Zone under the PC17.

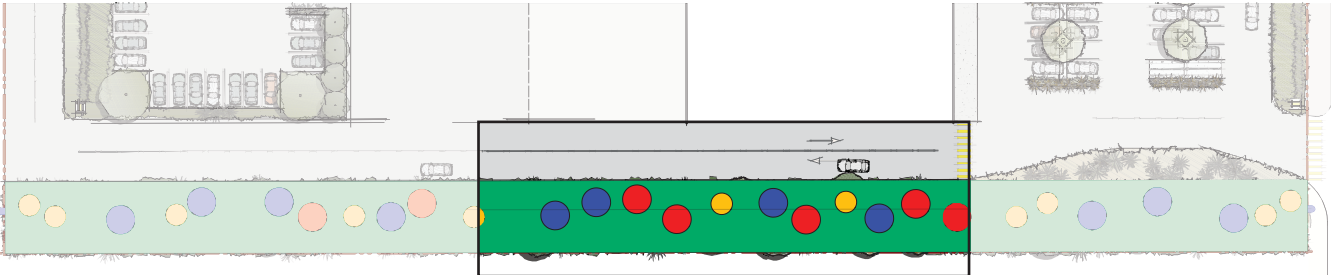


Planting shown at 10 year growth  
Mountain Beech (6m high), Ribbonwood (8m high), Kowhai (8m high) and Cabbage Trees (8m high).



Planting shown at maturity (30 years+)  
Mountain Beech (12m high), Ribbonwood (12m high), Kowhai (8m high) and Cabbage Trees (10m high).

NOTE:  
The render shows a 2.0m high timber paling fence on the eastern boundary.  
The tree planting includes: Mountain Beech (red dot), Ribbonwood (blue dot), Kowhai (yellow dot) and Cabbage Trees (interspersed).  
The shrub planting includes only short shrub planting (2m high max) and groundcovers.



Plan not to scale



Elevation Render - North-West View



## Elevation Render - South-East View



Elevation Render - South-West View





ROUGH MILNE MITCHELL  
LANDSCAPE ARCHITECTS

**Christchurch**  
Level Two, 69 Cambridge Terrace  
Christchurch 8013  
PO Box 3764 Christchurch 8140

info@rmmla.co.nz  
+64 3 366 3268

**Auckland**  
Level Two, 139 Victoria Street West  
Auckland CBD, Auckland 1010

info@rmmla.co.nz

**Dunedin**  
42 Stuart Street, Dunedin 9054

info@rmmla.co.nz  
+64 3 477 2030

**Wānaka**  
Level One, 24 Dungarvon Street,  
Wānaka 9305  
PO Box 349, Wānaka 9343

info@rmmla.co.nz  
+64 3 974 7940

# RMM

rmmla.co.nz