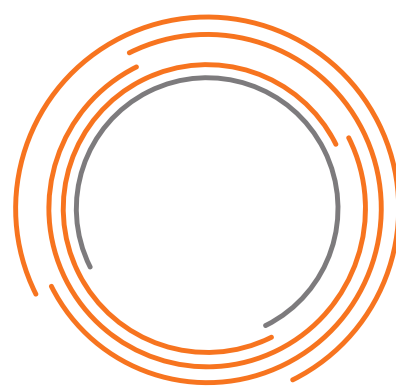


WOOLWORTHS NEW ZEALAND RESOURCE CONSENT FOR ROLLESTON SOUTH - FARINGDON OVAL

26 AUGUST 2024



asc architects

designgroup

17 maidstone street
ponsonby, auckland 1021
po box 5736, auckland 1141
new zealand
p. +64 9 377 5332
accounts@ascarchitects.co.nz
www.ascarchitects.co.nz

architecture

interior design

urban design

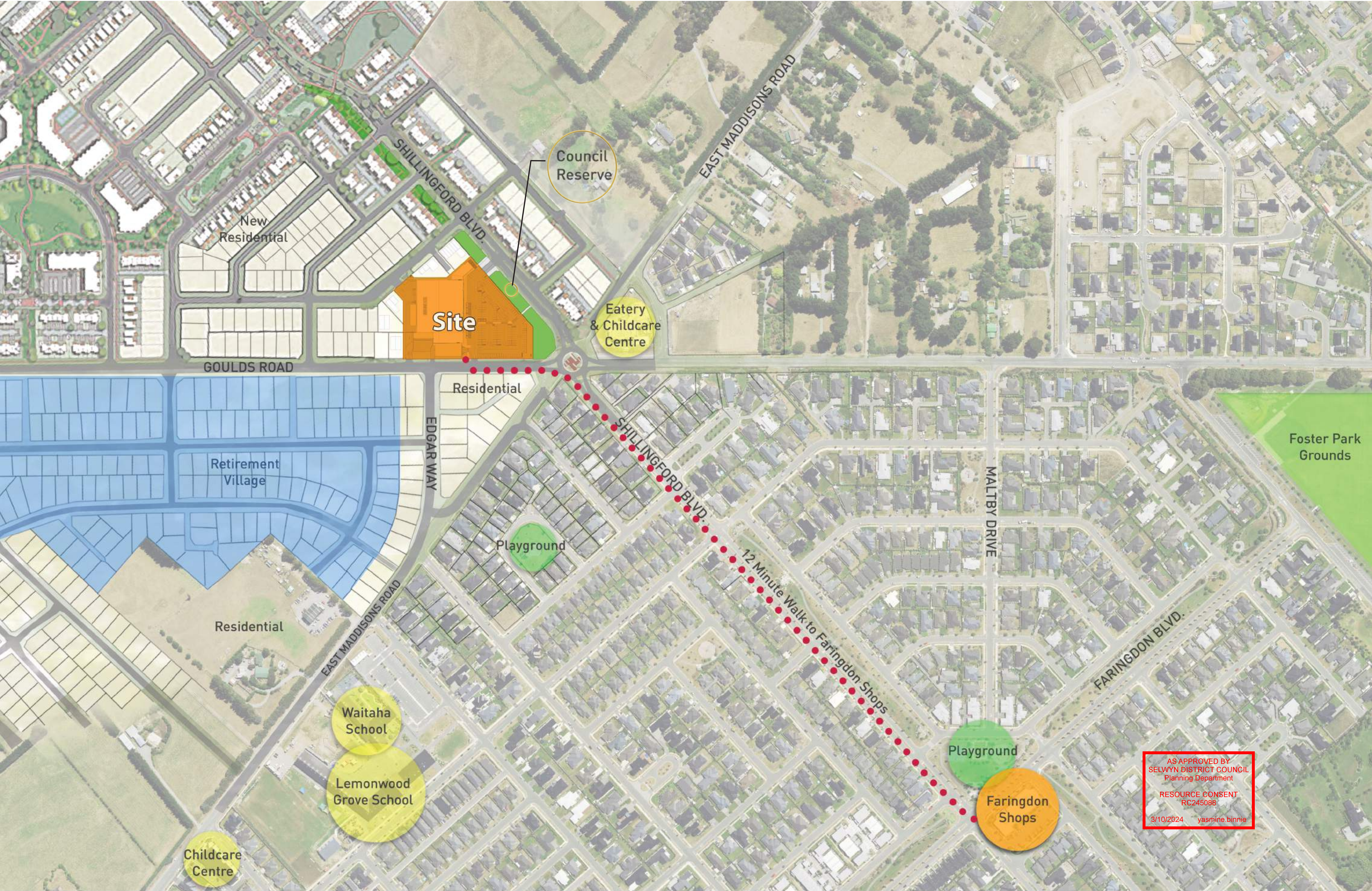
AS APPROVED BY
SELWYN DISTRICT COUNCIL
Planning Department

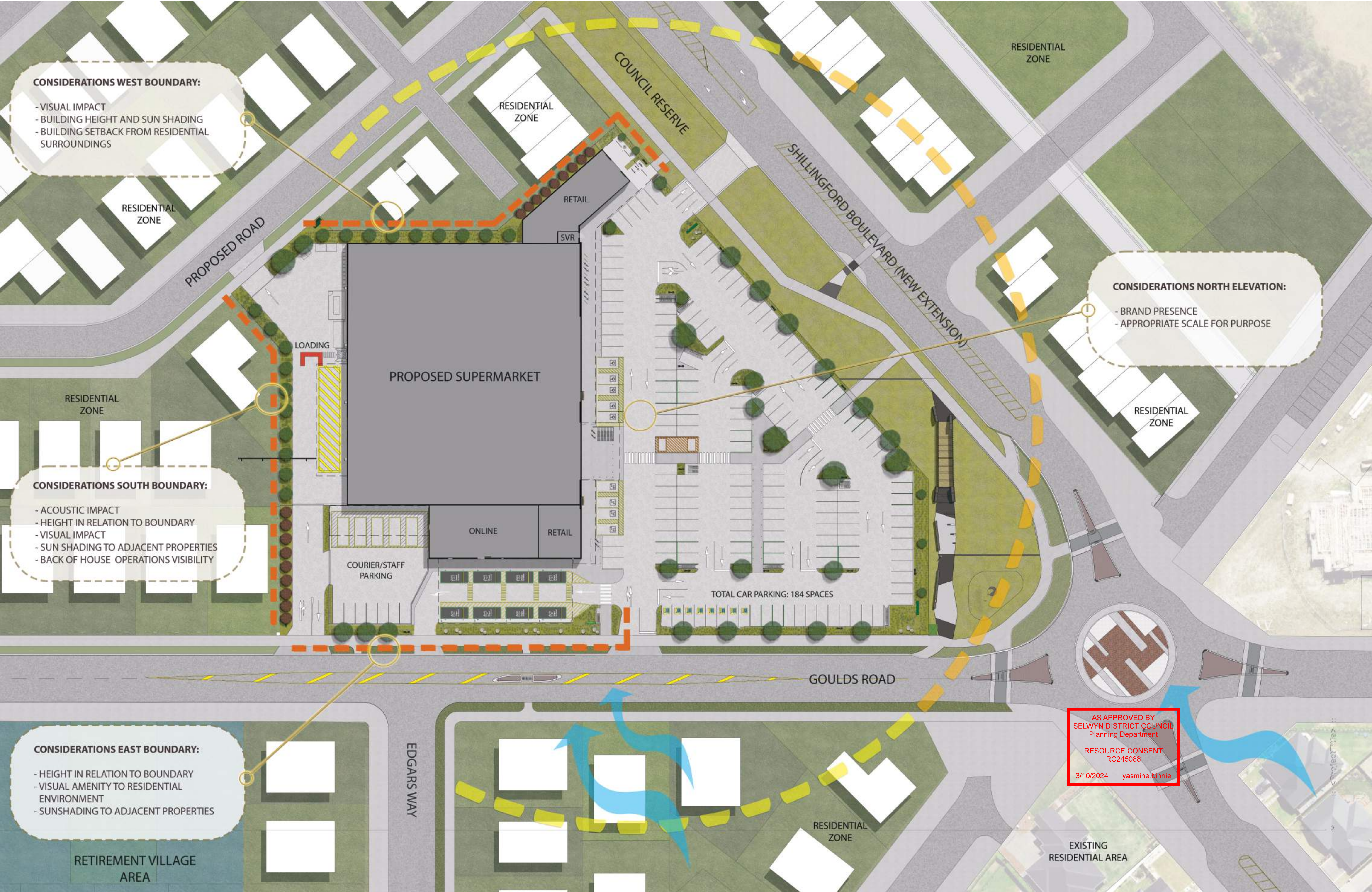
RESOURCE CONSENT
RC245088

3/10/2024 yasmine.binnie



AS APPROVED BY
SELWYN DISTRICT COUNCIL
Planning Department
RESOURCE CONSENT
RC245089
3/10/2023 yasmine.binnie











ELEVATION 01 - NORTHERN ELEVATION



ELEVATION 02 - SOUTHERN ELEVATION

LEGEND	
(P1) WEATHER BOARD PROFILE PAINT FINISH RESENE EIGHTH TRUFFLE	(P5) ACM SIGN PANEL COLOUR WWNZ GRASS COURT GREEN
(P2) PAINT FINISH RESENE NAPA	(PF) PAINT FINISH FASCIA RESENE ALABASTER
(P3) PAINT COLOUR RESENE DOUBLE MONDO	(AL) ALUMINIUM GLAZING SYSTEM WITH A POWDER-COATED FINISH IN MILLED ALUMINIUM
(P4) COLOUR WWNZ PAW PAW GREEN	(IN) "INNOSCREEN" VERTICAL ALUMINIUM FENCING SYSTEM BY WITH 'INTERPON FUTURA D2525 ORDOS SABLE' POWDERCOAT FINISH

AS APPROVED BY
SELWYN DISTRICT COUNCIL
Planning Department

RESOURCE CONSENT
RC245088

3/10/2024 yasmine.binnie

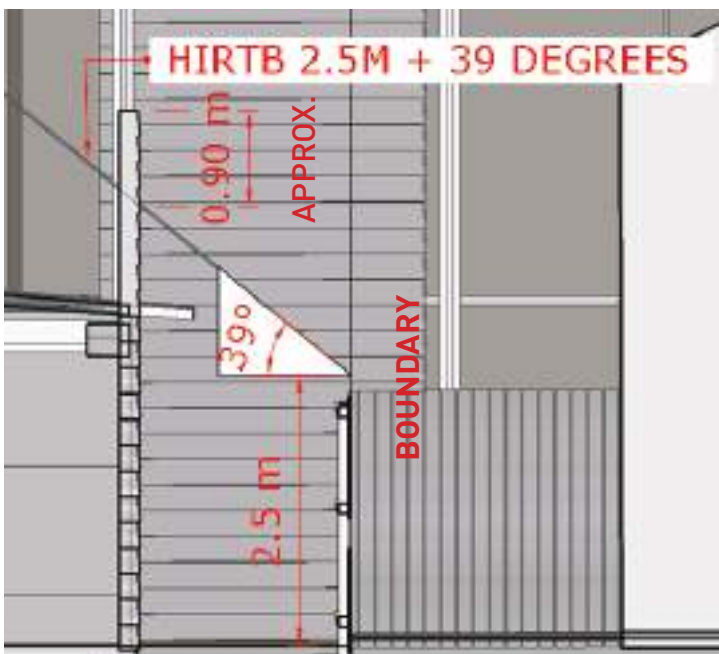




ELEVATION 04 - EASTERN ELEVATION

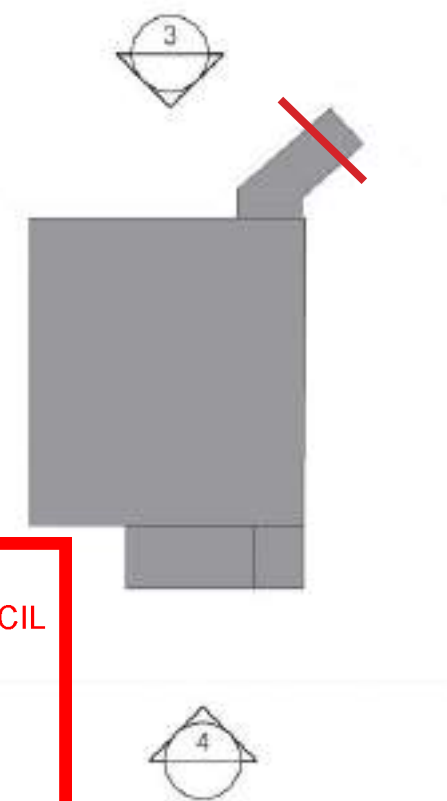


ELEVATION 03 - WESTERN ELEVATION



SECTION RETAIL AREA

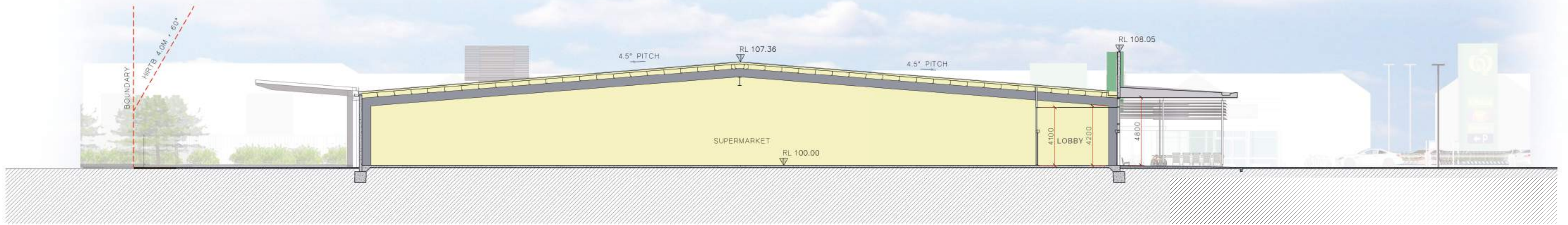
LEGEND			
(P1)	WEATHER BOARD PROFILE PAINT FINISH RESENE EIGHTH TRUFFLE	(P5)	ACM SIGN PANEL COLOUR WWNZ GRASS COURT GREEN
(P2)	PAINT FINISH RESENE NAPA	(PF)	PAINT FINISH FASCIA RESENE ALABASTER
(P3)	PAINT COLOUR RESENE DOUBLE MONDO	(AL)	ALUMINIUM GLAZING SYSTEM WITH A POWDER-COATED FINISH IN MILLED ALUMINIUM
(P4)	COLOUR WWNZ PAW PAW GREEN	(IN)	"INNOSCREEN" VERTICAL ALUMINIUM FENCING SYSTEM BY WITH 'INTERPON FUTURA D2525 ORDOS SABLE' POWDERCOAT FINISH



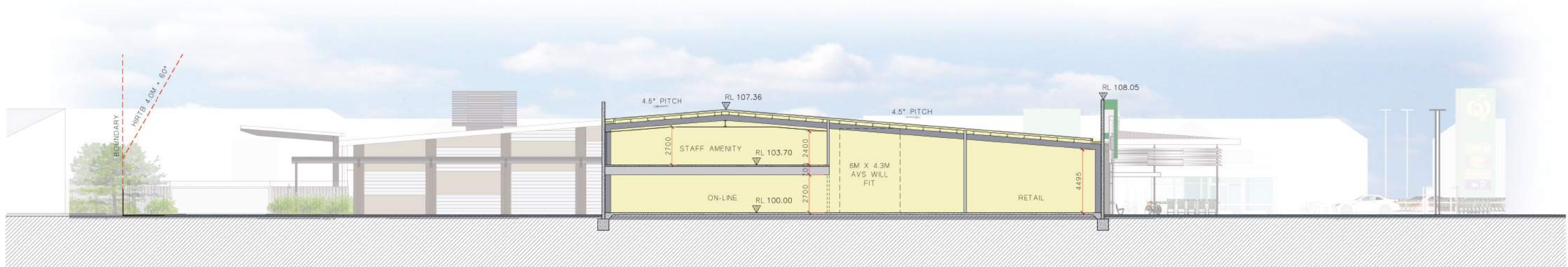
AS APPROVED BY
SELWYN DISTRICT COUNCIL
Planning Department

RESOURCE CONSENT
RC245088

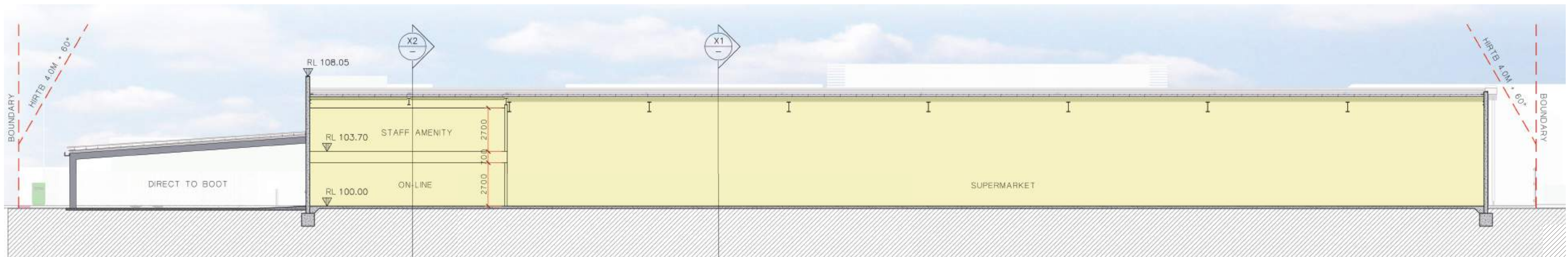
3/10/2024 yasmine.binnie



SECTION X1



SECTION X2

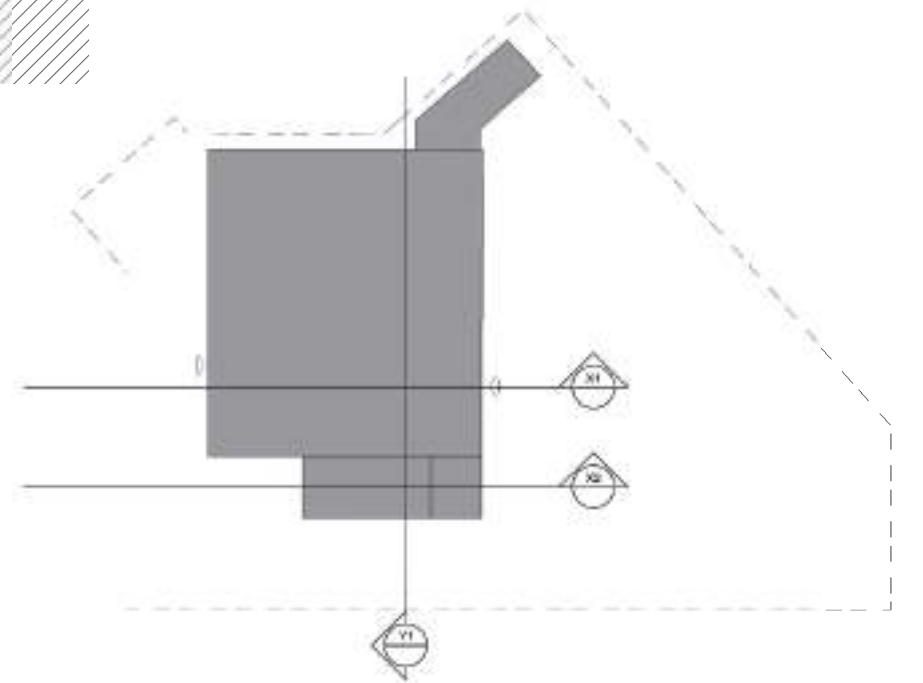


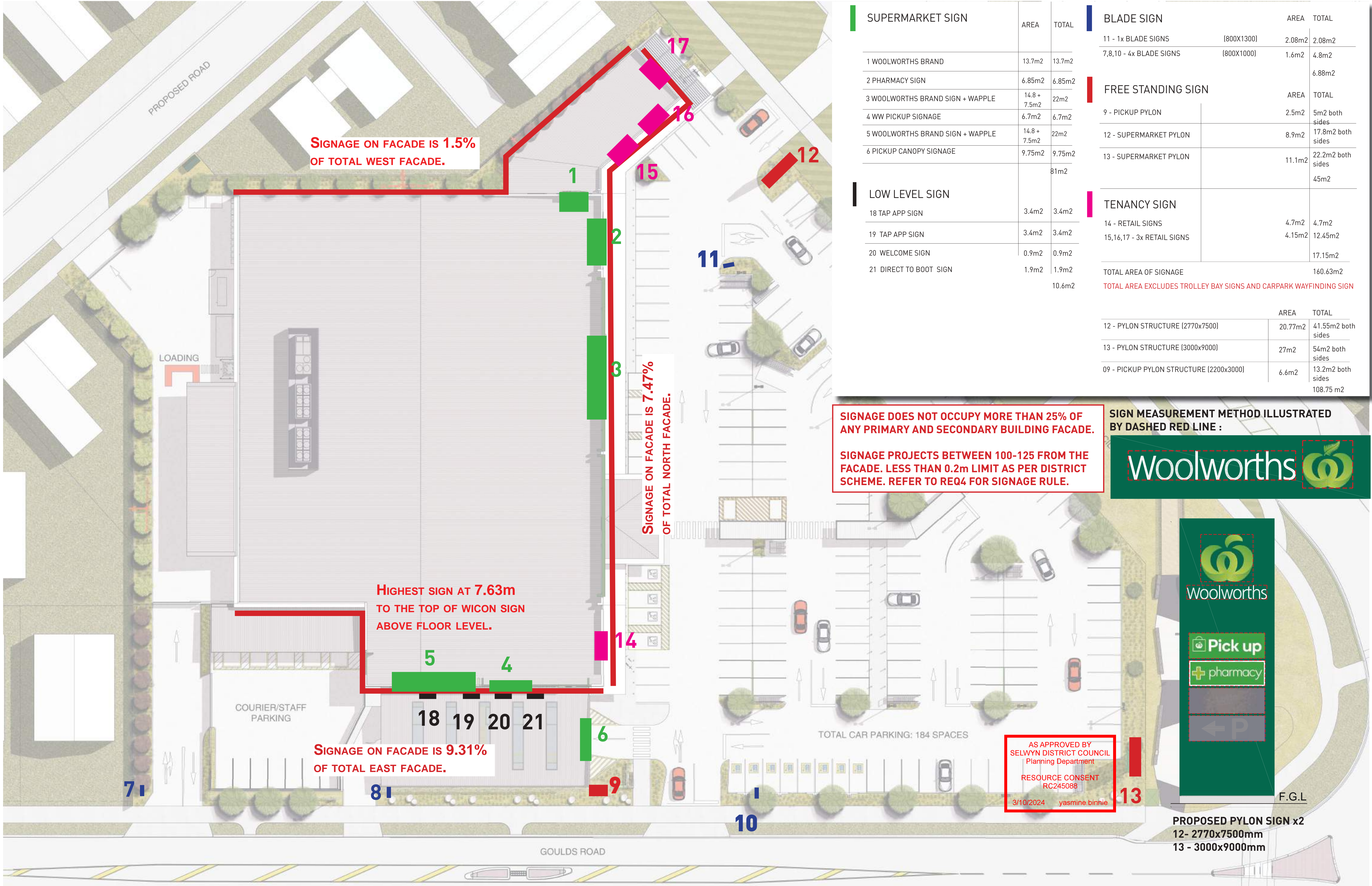
SECTION Y1

AS APPROVED BY
SELWYN DISTRICT COUNCIL
Planning Department

RESOURCE CONSENT
RC245088

3/10/2024 yasmine.binnie





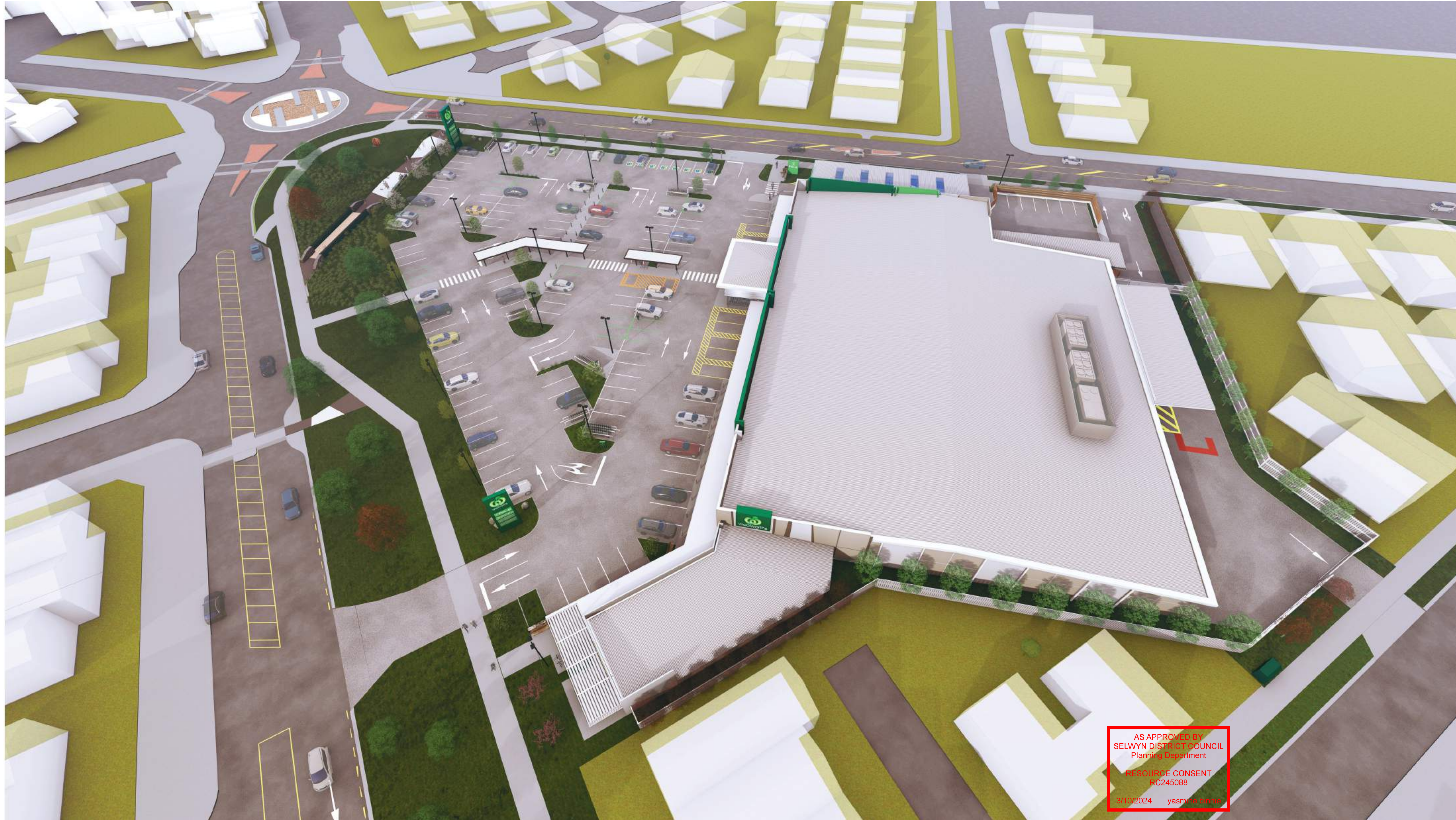
SUPERMARKET SIGN	AREA	TOTAL
1 WOOLWORTHS BRAND	13.7m2	13.7m2
2 PHARMACY SIGN	6.85m2	6.85m2
3 WOOLWORTHS BRAND SIGN + WAPPLE	14.8 + 7.5m2	22m2
4 WW PICKUP SIGNAGE	6.7m2	6.7m2
5 WOOLWORTHS BRAND SIGN + WAPPLE	14.8 + 7.5m2	22m2
6 PICKUP CANOPY SIGNAGE	9.75m2	9.75m2
		81m2
LOW LEVEL SIGN		
18 TAP APP SIGN	3.4m2	3.4m2
19 TAP APP SIGN	3.4m2	3.4m2
20 WELCOME SIGN	0.9m2	0.9m2
21 DIRECT TO BOOT SIGN	1.9m2	1.9m2
		10.6m2

BLADE SIGN		AREA	TOTAL
11 - 1x BLADE SIGNS	(800X1300)	2.08m2	2.08m2
7,8,10 - 4x BLADE SIGNS	(800X1000)	1.6m2	4.8m2
			6.88m2
FREE STANDING SIGN		AREA	TOTAL
9 - PICKUP PYLON		2.5m2	5m2 both sides
12 - SUPERMARKET PYLON		8.9m2	17.8m2 both sides
13 - SUPERMARKET PYLON		11.1m2	22.2m2 both sides
			45m2
TENANCY SIGN			
14 - RETAIL SIGNS		4.7m2	4.7m2
15,16,17 - 3x RETAIL SIGNS		4.15m2	12.45m2
			17.15m2
TOTAL AREA OF SIGNAGE			160.63m2
TOTAL AREA EXCLUDES TROLLEY BAY SIGNS AND CARPARK WAYFINDING SIGN			

	AREA	TOTAL
12 - PYLON STRUCTURE (2770x7500)	20.77m2	41.55m2 both sides
13 - PYLON STRUCTURE (3000x9000)	27m2	54m2 both sides
09 - PICKUP PYLON STRUCTURE (2200x3000)	6.6m2	13.2m2 both sides
		108.75 m2

SIGN MEASUREMENT METHOD ILLUSTRATED BY DASHED RED LINE :









AS APPROVED BY
SELWYN DISTRICT COUNCIL
Planning Department

RESOURCE CONSENT
RC245088

3/10/2024 yasmine.binnie



AS APPROVED BY
SELWYN DISTRICT COUNCIL
Planning Department

RESOURCE CONSENT
RC245088

3/10/2024 yasmine.binnie



AS APPROVED BY
SELWYN DISTRICT COUNCIL
Planning Department

RESOURCE CONSENT
RC245088

3/10/2024 yasmine.binnie



AS APPROVED BY
SELWYN DISTRICT COUNCIL
Planning Department

RESOURCE CONSENT
RC245088

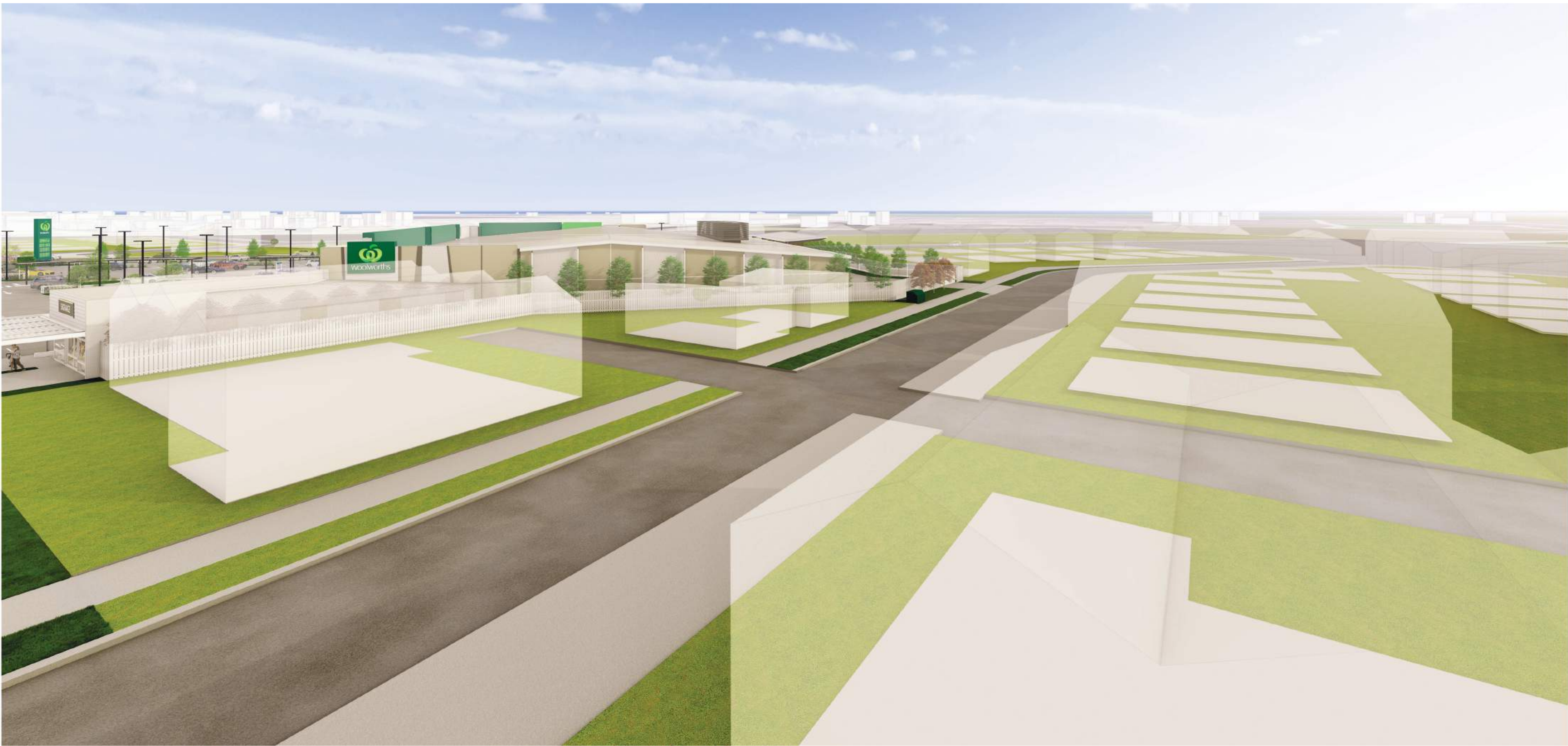
3/10/2024 yasmine.binnie



AS APPROVED BY
SELWYN DISTRICT COUNCIL
Planning Department

RESOURCE CONSENT
RC245088

3/10/2024 yasmine.binnie



AS APPROVED BY
SELWYN DISTRICT COUNCIL
Planning Department

RESOURCE CONSENT
RC245088

3/10/2024 yasmine.binnie