



# LINCOLN EVENT CENTRE

## Function and Meeting Room Hire

*An exceptional, multi-purpose  
event venue*

# Welcome to the Lincoln Event Centre

The Lincoln Event Centre is a state-of-the-art venue located just 20 minutes from Christchurch International Airport and the central city.

With a variety of affordable venue spaces, the Lincoln Event Centre can accommodate everything from boardroom meetings and seminars to product launches, gala dinners, conferences, rock concerts and major indoor sporting fixtures.

Our staff can also assist you with organising catering, theming, audio and more.

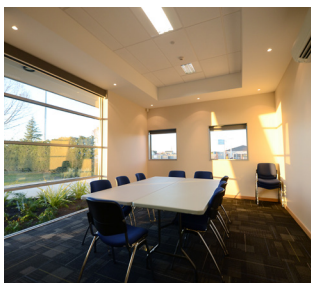


**LINCOLN**  
EVENT CENTRE

# The very best venue for your next function or event!

We offer a range of meeting rooms and lounges. As well as a large hall and stadium.

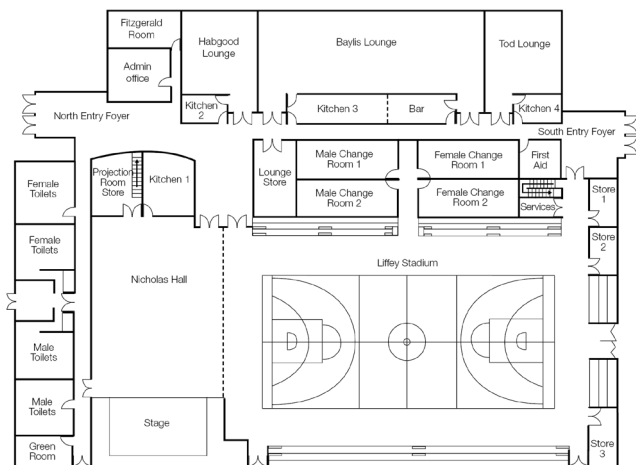
All areas are modern, clean and equipped with the latest facilities and fittings.



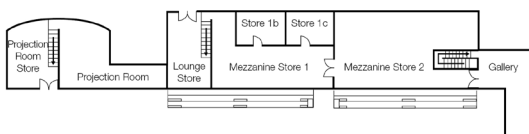
Book these facilities online at [www.lincolneventcentre.co.nz](http://www.lincolneventcentre.co.nz)

# Facilities

- Commercially-licensed kitchens
- Tables and chairs
- Crockery, cutlery and glassware
- Wheelchair access
- Coffee and tea facilities
- Free WiFi access
- Data and overhead projector
- Sound system and screen
- Staging
- Free parking for up to 200 vehicles
- Changing rooms with showers
- Umpires/first aid room
- Bar facilities designed and presented to licensed standards



LINCOLN EVENT CENTRE Ground Floor



LINCOLN EVENT CENTRE Mezzanine Floor

# Rooms available

## Liffey Stadium

 **Room size:** 1,120m<sup>2</sup>  **Capacity:** 685 people

Designed to accommodate conferences, gala dinners and sporting fixtures. The stadium also has the acoustics required for musical and theatrical performances, prize-givings and ceremonies.

**Additional features:** Carpet floor tiles. Portable stage, full-sized indoor basketball and netball court also features court markings for tennis, badminton and volleyball.

## Baylis Lounge

 **Room size:** 209m<sup>2</sup>  **Capacity:** 200 people

Our modern, top-class lounge contains a full commercial kitchen and bar facilities, making this an ideal space for weddings, 21st celebrations, conferences, and meetings.

**Additional features:** Projector and sound system, portable stage.

## Fitzgerald Room

 **Room size:** 32m<sup>2</sup>  **Capacity:** 15 people

Ideal for boardroom meetings or interviews.

## Nicholas Hall

 **Room size:** 260m<sup>2</sup>  **Capacity:** 225 people

Purpose-built room designed for seminars, meetings and concerts.

**Additional features:** In-built stage with grand piano, full commercial kitchen and multiple access doors.

## Tod and Habgood Lounges

 **Room size:** 72m<sup>2</sup>  **Capacity:** 50 people

Two identical lounges suitable for meetings, seminars and cocktail functions.

**Additional features:** Equipped kitchens, bar area, access to outdoors, fully carpeted.

## Green Room

 **Room size:** 18m<sup>2</sup>  **Capacity:** 10 people

The Green room is a great space for storing coats during an event or as a warm up space for speakers.

# Lincoln Event Centre

15 Meijer Drive, Lincoln

For general enquiries contact (03) 347 2983  
email [lec.enquiries@selwyn.govt.nz](mailto:lec.enquiries@selwyn.govt.nz)

[www.lincolneventcentre.co.nz](http://www.lincolneventcentre.co.nz)