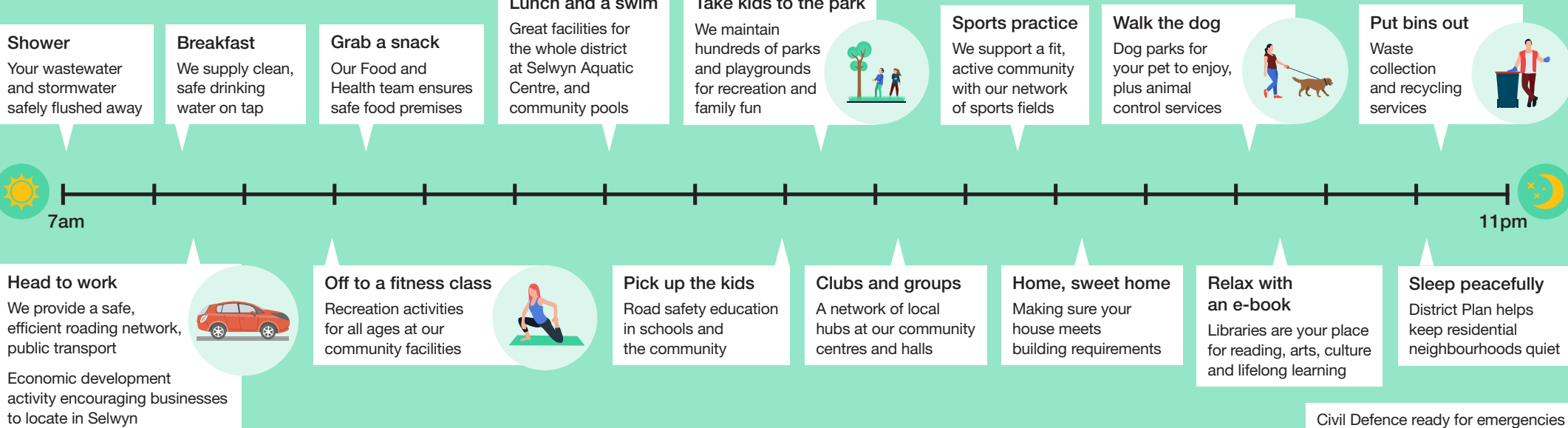


# Where do my rates go?

## 2019/20



You really can't get through the day without making use of many of the services the Council provides. Here's just a small sample of the ways your rates help keep your community ticking...



## Your rates – at work in the community 24/7

Whether it's the water you use to brush your teeth, the local roads you drive on to work or recreation, the community halls you meet in, the pools and parks where families play, the libraries where you can stimulate your mind, services that support residential and business development, events and promotions that bring visitors to the district, the water races that keep land irrigated and stock watered, regulatory functions that keep food outlets clean, the trucks that carry your rubbish away or a hundred-and-one other essential services ... your rates are working for the good of the community 24 hours a day, seven days a week.

### Funding the Council's activities

The majority of the Council's activities are funded by the rates contribution made by Selwyn residents each year. This contribution is made up of a combination of general rate and targeted rates. Other sources of funding include fees and charges, development contributions, subsidies and grants.

### Economic development

Supporting local businesses and encouraging visitors to enjoy the district is a key role for the Council, to grow the economic prosperity of the district, so that people live, work and play here long term. Economic development is funded from general rates and funds received from the Government.

1%

About 1c of your general rate dollar helps fund economic development

### Community development

The Council works with many community groups and committees to build the capacity of local communities and volunteers, and encourage activities and approaches that build a sense of community connectedness. This activity is funded by general rates plus external funding where available.

4%

About 4c of your general rate dollar helps fund community development

### Forestry

The Council has 65.9 hectares over 35 sites planted in forestry. Forestry activities are a form of sustainable land management, controlling weeds and preventing soil erosion. If revenue is not sufficient in any one year to cover operating costs general rates are used to fund the deficit.

0.6%

About 0.6c of your general rate dollar helps fund forestry activity

### Property

The community owns a range of property that allows the Council to provide for specific activities. The Council has a commercial property strategy that expects a minimum of the applicable cash return available to the Council on the date the property was purchased. Other property includes office buildings, depots and rental housing.

7%

About 7c of your general rate dollar helps fund property activity

## General rate

The general rate provides funding for a wide range of Council services and facilities that benefit the whole district. The general rate includes a fixed Uniform Annual General Charge component, plus a component related to property value. The following section outlines the services funded by the general rate, and how much of your contribution goes towards each service.

### Planning

This activity manages the Resource Management Act and includes engaging with the community to develop policy and strategy to guide Selwyn's future growth and character. It also provides for the ongoing management of resource consents. This activity is funded by both general rates and by fees and charges for services provided.

In 2017/18 we processed 729 resource consent applications.

7%

About 7c of your general rate dollar helps fund planning

### Administration of the Building Act

The Council is an accredited building consent authority and manages, monitors and processes building consent applications, to ensure that buildings meet all the criteria under the Building Act 2004. This activity is mainly funded by fees and charges for services provided, with a small proportion from general rates.

In 2017/18 we issued 2,458 building consents.

8%

About 8c of your general rate dollar helps fund building

### Cemeteries

The Council provides and maintains 19 cemeteries throughout Selwyn district. We keep records of all plots and headstones, and maintain the grounds. This activity is funded 50% by fees and charges such as purchasing of plots and interment fees, and 50% by general rates.

1%

About 1c of your general rate dollar helps fund cemeteries

### Council

Council operating costs are funded 100% from general rates. These costs include elections, consultation with the community on our Long-Term Plans, Annual Plans, annual report process and the advocacy offered by the Council on issues affecting the district.

10%

About 10c of your general rate dollar helps fund Council governance

### Public toilets

When visitors and residents alike are out and about in the Selwyn district it is good to know that there are clean, well-maintained public toilets available. The Council has 26 public toilet facilities located across the district. This activity is funded from general rates.

2%

About 2c of your general rate dollar helps fund public toilets

### Swimming pools

The hugely popular Selwyn Aquatic Centre, along with our network of community pools, provide recreation, health and social opportunities for residents and visitors as well as life skills such as learning to swim. Swimming pools are funded through a small component from general rates plus a targeted rate.

Selwyn residents and visitors made 308,000 visits to the Aquatic Centre and community pools in 2017/18.

1%

About 1c of your general rate dollar helps fund swimming pools

### Transportation

The Council maintains 2,600 kilometres of roading network across the district – including sealed and unsealed roads, footpaths, bridges and cycleways. We maintain and improve these assets to help ensure that travel around the district is safe and efficient. General rates are used to fund this activity, along with subsidies from the New Zealand Transport Agency.

In 2017/18 we repaired 5,273 potholes and ressealed 77.1 km of road.

40%

About 40c of your general rate dollar helps fund the transport network (some of this is initially funded by borrowing)

### Community centres and halls

The district has 27 community centres and halls, which serve as important local venues for social, cultural, recreational and educational use. These centres providing spaces for people to meet and interact, supporting voluntary community committees, clubs and groups. Support services for community centres and halls are funded from the general rate, while local halls are funded through a standard district-wide targeted rate.

3%

About 3c of your general rate dollar helps fund support for community centres

### Parks, reserves and playgrounds

Selwyn residents can make the most of the outdoors through the network of parks, reserves and playgrounds that the Council provides and maintains. In addition to the opportunity for recreation pursuits, reserves conserve and enhance the natural environment and rural landscape. District reserves and support costs are funded from the general rate, while specific local reserves are paid for by a local targeted rate.

We provide 706 ha of recreations reserves, and 406 reserves and playgrounds.

13%

About 13c of your general rate dollar helps fund parks, reserves and playgrounds

### Emergency management

The Council has an important role in providing resources, coordinating support, and assisting communities in emergencies, through its Civil Defence activities and initiatives such as 'Selwyn Gets Ready'. This activity is funded from general rates and from recoveries where possible.

1%

About 1c of your general rate dollar helps fund emergency management activity

### Health, liquor, and other regulatory functions

Whenever you visit a cafe or restaurant or pick up a bottle of wine from the liquor store, our team has already made sure that the shop you visit maintains high standards of hygiene and follows government standards. The Council issues liquor, food and health licenses, carries out regular checks of licensed premises and responds to noise complaints. This activity is funded largely from fees and charges, with the balance from general rates.

1%

About 1c of your general rate dollar helps fund health, liquor, and other regulatory functions activity

### Animal control

Our animal control officers are responsible for complaints regarding dogs and stock, and all manner of other animals. The Council also handles dog registrations, runs the district's dog pound and provides education programmes in schools. This activity is predominantly funded by dog owners with the balance paid from general rates.

We love dogs! In 2017/18 we registered 13,526 dogs in Selwyn.

0.4%

About 0.4c of your general rate dollar helps fund animal control activity

## Targeted rates

Targeted rates are used where a Council service or facility provides a benefit to a particular group of ratepayers or location.

The amount of each targeted rate will be shown on your rates assessment. Some of the key services and facilities provided through targeted rates include:

### Libraries

Libraries help people to meet, find information, access reading and educational material, and keep up with news and events in the district. Libraries promote lifelong learning, community awareness and participation, and contribute to increased wellbeing. The Council operates four libraries and service centres in Darfield, Leeston, Lincoln and Rolleston along with an outreach service to outlying communities.

Households contribute \$225 a year to the libraries network and services

### Recreation reserves

Recreation reserves providing spaces where people of all ages can enjoy sport and recreation. The cost of maintenance and improvements are funded by a standard district-wide targeted rate, along with some user charges.

In 2017/18, 84% of Selwyn residents used one of the district's parks or playgrounds.

Households contribute \$130 a year to district recreation reserves

### Water supply

Water rates fund the ongoing costs of operating the water supply, and maintaining and renewing the infrastructure so that it continues to operate at an acceptable level of service – ensuring Selwyn residents have access to reliable, safe, clean water.

We manage more than 30 water supplies across the district, supplying more than 7.6 million litres of clean safe drinking water to residents.

Households on Council water supplies pay a base targeted rate of \$244 a year, plus a volumetric charge\* of 48 cents per cubic metre of water (1000 litres). \*Billed separately

### Stormwater

The Council's stormwater network helps ensure the roading network can function effectively and safely, reduces risks to people from stormwater ponding for long periods and reduces environmental effects of contamination from stormwater discharge. The Council has 22 urban stormwater schemes.

Households on urban stormwater schemes pay a targeted rate of \$94 a year

### Wastewater

The Council has 15 wastewater schemes around the district, to collect and treat sewage from residential, industrial and commercial properties. The Council levies a targeted rate to pay for the operating and maintenance costs, and to fund renewals and upgrades including the Pines Wastewater Treatment Plant.

In 2017/18 we treated 3.85 million cubic metres of wastewater.

Households on urban stormwater schemes pay a targeted rate of \$542 a year

### Water races

There are three water race networks across Selwyn, primarily providing water for stock. They also provide environmental benefits as a water source and habitat for biodiversity, and help to make many townships attractive.

Amenity charge for all households of \$22 a year, plus for areas where the service is available, an annual charge of \$318 and a per hectare charge of \$18.

### Canterbury Museum levy

Museums are an important part of our heritage. This Council, along with Christchurch City, Waimakariri and Hurunui District Councils, helps fund operating costs of the Canterbury Museum that are not funded by admission charges and other revenues.

Households contribute \$31 a year to the Museum levy

### Community centres and halls

Our district-wide network of 27 community centres and halls is an important asset for Selwyn, providing space for functions, events, recreation, community groups, learning and much more. A district-wide targeted rate helps fund the provision and maintenance of these important local hubs.

Households contribute \$175 a year to community centres and halls

### Refuse and recycling

Refuse collection and disposal is an important service which the Council provides to more than 21,000 households across the district. Refuse, recycling and organic services are available in most townships, with households having a choice of wheeler bin options.

In 2017/18 we processed 27,247 tonnes of waste through the Resource Recovery Park.

Targeted rates for refuse and recycling vary according to the options chosen: organic \$210; 240L refuse \$407; 80L \$136.40. Plus fixed rate of \$106.

### Swimming pools

Swimming pools provide essential health, recreation, sport and wellbeing opportunities for residents throughout Selwyn. The swimming pools targeted rate has been split into three zones that reflect the proximity to the Selwyn Aquatic Centre and existing community pools.

A new extension to the Selwyn Aquatic Centre will begin construction in the coming year.

Targeted rate per household: Zone 1 \$177; Zone 2 \$124; Zone 3 \$44

### Other targeted rates may apply in some locations.

These figures are based a typical Selwyn residential property. Your individual rates figures may vary, depending on the services provided in your location. Refer to your rates assessment for a full list of applicable rates.

For more information on your rates see: [www.selwyn.govt.nz/rates](http://www.selwyn.govt.nz/rates)

### Making rates payments easier

We offer a range of payment methods including online card payments, internet banking and direct debit (Easypay). You can also choose to receive your rates notices by email, instead of by mail. See information and forms online.

### Rates rebates

If you are on a low income and pay rates on the property you live in, you may be eligible for a rates rebate. Check online to find out more.

### Environment Canterbury rates

Selwyn District Council also acts as an agent for the collection of Environment Canterbury (Canterbury Regional Council) rates for Selwyn district ratepayers. Environment Canterbury rates are set by the regional council and are shown on your rates assessment.

For more information see [www.selwyn.govt.nz/rates](http://www.selwyn.govt.nz/rates)  
Or email [rates@selwyn.govt.nz](mailto:rates@selwyn.govt.nz)

[www.selwyn.govt.nz](http://www.selwyn.govt.nz)



**Selwyn**  
DISTRICT COUNCIL