

## Summary of Proposal – Water Race Closures July 2021

### 1. Proposed Closures

Council has received formal requests to close the sections of water race listed in Table 1.

These races are considered to be of low significance and the closure of races in Table 1 will not significantly alter the intended level of service provision of the Ellesmere, Malvern and Paparua water race schemes.

Subject to public consultation and Council approval, these races will be closed and stock water supply in these races will cease.

Details of each closure, including maps showing the location, can be found on the page referenced in Table 1.

**Table 1 – Proposed Water Race Closures**

Closure Ref.	Scheme	Road Name	Page Ref.	Approx. Length Race (km)
1	Paparua	McLeans Island Road	4	2.7
2	Paparua	Tancreds Road	5	0.4
3	Paparua	Springston Rolleston Road	6	0.1
4	Paparua	Weedons Ross Road	7	0.1
5	Paparua	Selwyn Road	8	0.6
6	Ellesmere	Wabys and Crossgates Road	9	3.8
7	Ellesmere	Cryers and Triphooks Road	10	3.4
8	Ellesmere	Tramway and Southbridge Dunsandel Road	11	6.7
9	Ellesmere	Hororata Dunsandel Road	12	0.04
10	Malvern	Aylesbury Road	13	3.2
11	Malvern	Courtenay Road	14	0.1
12	Malvern	West Coast Road	15	0.7
13	Malvern	Telegraph Road	16	3.6
14	Malvern	West Coast to Dalethorpe Road	17	9.6
<b>Total</b>				<b>35.1</b>

### 2. Impact of Closures

The proposed water race closures represent the following loss to each of the schemes:

**Table 2 - Impact of Closure**

Water Race	Reduction in length (km)	Reduction in length (%)	Loss of targeted rate income (\$)
<b>Ellesmere</b>	13.9km	4.16%	0.68%
<b>Malvern</b>	17.25km	1.94%	0.71%
<b>Paparua</b>	3.88km	0.90%	0.09%
<b>Total</b>	<b>35km</b>	<b>(2.0%)</b>	<b>1.48%</b>

Closure of these races as been assessed for operational impact to each of the Selwyn District Stock Water Race Schemes. It has been determined disturbance and cost impact to operations and maintenance of each scheme will be minor.

### **3. Consultation Process**

#### **3.1 Views of those affected**

The Local Government Act (LGA) section 82 requires consultation with persons affected by or have an interest in a decision. These persons must also be provided with a reasonable opportunity to present their views to the Local Authority.

For an individual race closure to be progressed the Council requires that the initiator of the water race closure request obtain agreement from at least 80% of affected property owners and provide Council with an 'Agreement to Close Water Race' form signed by affected property owners.

Where a proposed closure has 80% support from affected land owners, the closure is generally considered to be of low significance, therefore the 'inform/consult' end of Council's engagement spectrum, as outlined in the LTP, is considered appropriate. An affected property owner has been deemed to be those with a race on or adjacent to the property, regardless of whether the property is rated.

Where a proposed water race closure has attracted 100% support and no further objections are received, the closure will progress once approved by Council.

#### **3.2 Interested Parties Consultation**

To allow any parties with an interest in water race closures to input into the process, as required by section 82 (1 (a)) of the LGA, all race closures will require:

- Public advertisement for a minimum of 3 weeks, in Council Call and on the Council website. Maps of proposed water race closures will be available to view at Council or on the website.
- A letter to be sent to all directly affected property owners to notify them that the proposed closure has been approved to progress to public consultation.
- Specific stakeholders, identified as Department of Conservation, Fish and Game, Fire and Emergency New Zealand, Historic Places Trust (specifically where structures e.g. headworks are involved) and Ngāi Tahu will be directly provided with a copy of the above advertisement.

If interested parties wish to present their views there will be an opportunity to present. Should objections to an advertised closure be received, a hearing panel will consider the objection and its relevance to stockwater supply as part of their decision making.

A recommendation to Council was made to delegate powers to hear submissions to the Group Manager - Infrastructure to make recommendation on the significance of water race closures and agree closures not deemed significant.

Formal public hearing will only occur if persons wish to be heard. Any objections to race closures on grounds other than stockwater supply will be considered during public hearing (if applicable) and the hearing decision confirmed by Council. Consideration will need to be given to whether objectors are stockwater rate payers and directly or indirectly affected. Should a race be retained for reasons other than stockwater supply a different rating mechanism may be required.

Following any hearings, the Group Manager- Infrastructure will make recommendations to Council, who will make a decision on approval of the closure.

### **3.3 Ecological Considerations**

The races proposed for closure will be assessed for ecological value.

The Canterbury Water, Selwyn Waihora Zone Implementation Programme acknowledges that Council are reviewing the operation of the stockwater race network and seeking opportunities for rationalisation while managing some races for biodiversity and community values.

The Ecological Assessment undertaken in the Ellesmere and Malvern schemes by EOS Ecology in 2011 identified that a number of races have high ecological value with freshwater mussels, native aquatic invertebrate biodiversity. In response to the recommendations of this report, the following actions are being taken:

- The Department of Conservation are provided an opportunity to assess all races proposed for closure to assess ecological value and undertake salvage of aquatic life if deemed beneficial.
- The Council is considering options to retain and fund nominated races of high ecological value for environmental purposes.
- A programme of fish screen installations have been funded for all active intakes now have functioning fish screens

If a race has been dry for a period of time, low levels of aquatic life are expected to be present and limited to isolated pools.

Where a salvage of aquatic life is deemed necessary, consulting companies exist that are equipped to undertake electrofishing, and salvage. However this may attract significant cost. The Agreement to Close Water Race form states that the benefiting property owners are liable for their share of the costs associated with the closure.

## **4. Further Information**

For further information on the proposed closures, or to make a submission, please contact Council on 03 347 2800 or via [WaterRaces@selwyn.govt.nz](mailto:WaterRaces@selwyn.govt.nz).

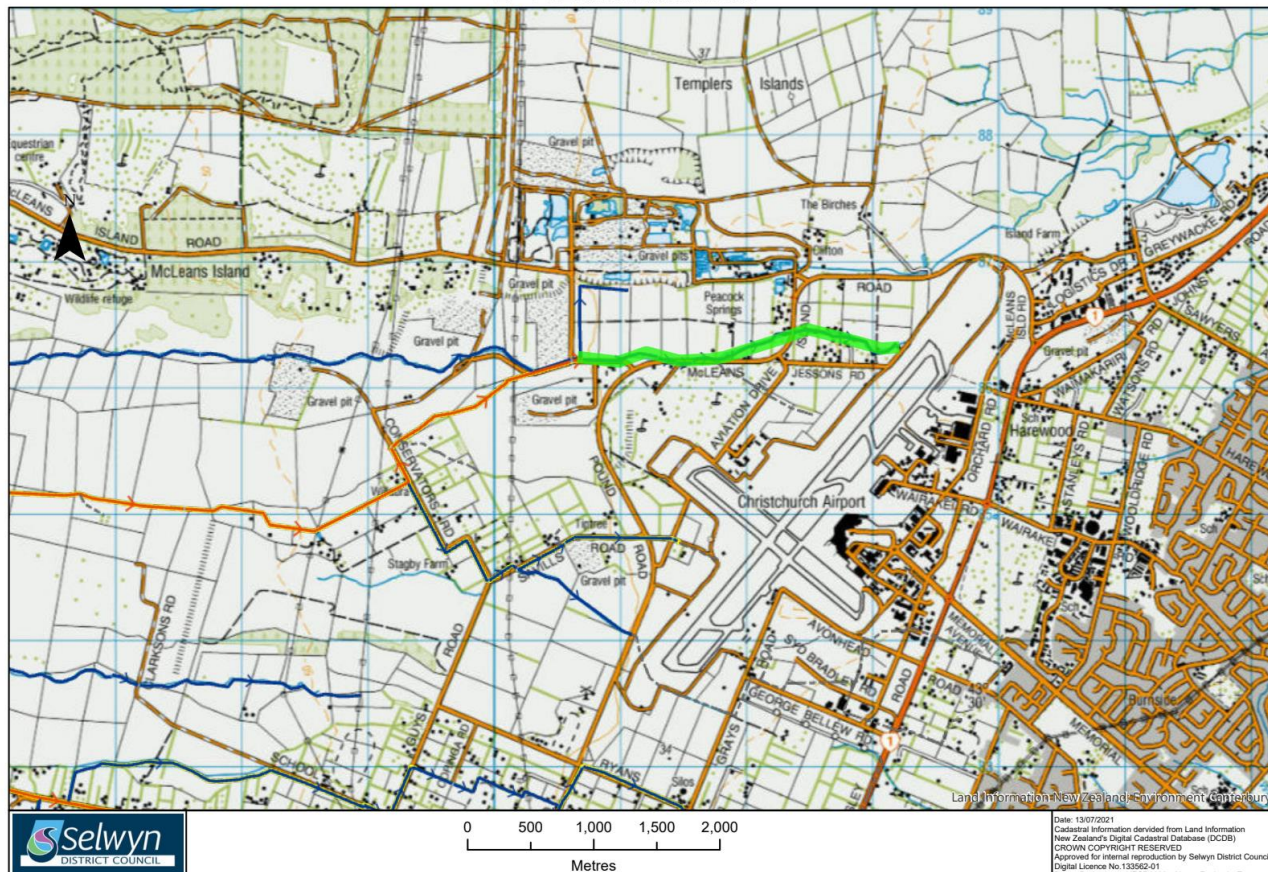
Any persons wishing to present their views on this matter should notify Council by **27<sup>th</sup> August 2021**.

## **5. Appendix 1 – Closure Maps and Details**

**Closure Reference:** #1 McLeans Island Road

**Map and Location:**

1 - McLeans Island Road



**Scheme:** Paparua

**Length of Proposed Closure:** 2.7 km

**Application Received From:** Isaac Conservation and Wild Life Trust

**Number of Affected Properties:** 13

**Number of Properties agreed to Closures:** 11 – 85 %

**Percentage Loss of Rating Income:** 0.00 % (This race is within Christchurch City Boundary)

**Reason for Closure:** To allow for re-alignment of road and further development of properties.  
Alternative sources of stock water available.

**Details of Closure:** This is the end of line race and has previously been shortened to its current termination point. The closure will require a soak pit installed at the termination point. No viable alternative options to closure is practical for this proposal.

**Closure Reference: #2 Tancreds Road**

**Map and Location:**

2 - Tancreds Road



**Scheme:** Paparua

**Length of Proposed Closure:** 0.4 km

**Application Received From:** K Miller

**Number of Affected Properties:** 4

**Number of Properties agreed to Closures:** 4 – 100 %

**Percentage Loss of Rating Income:** 0.05 %

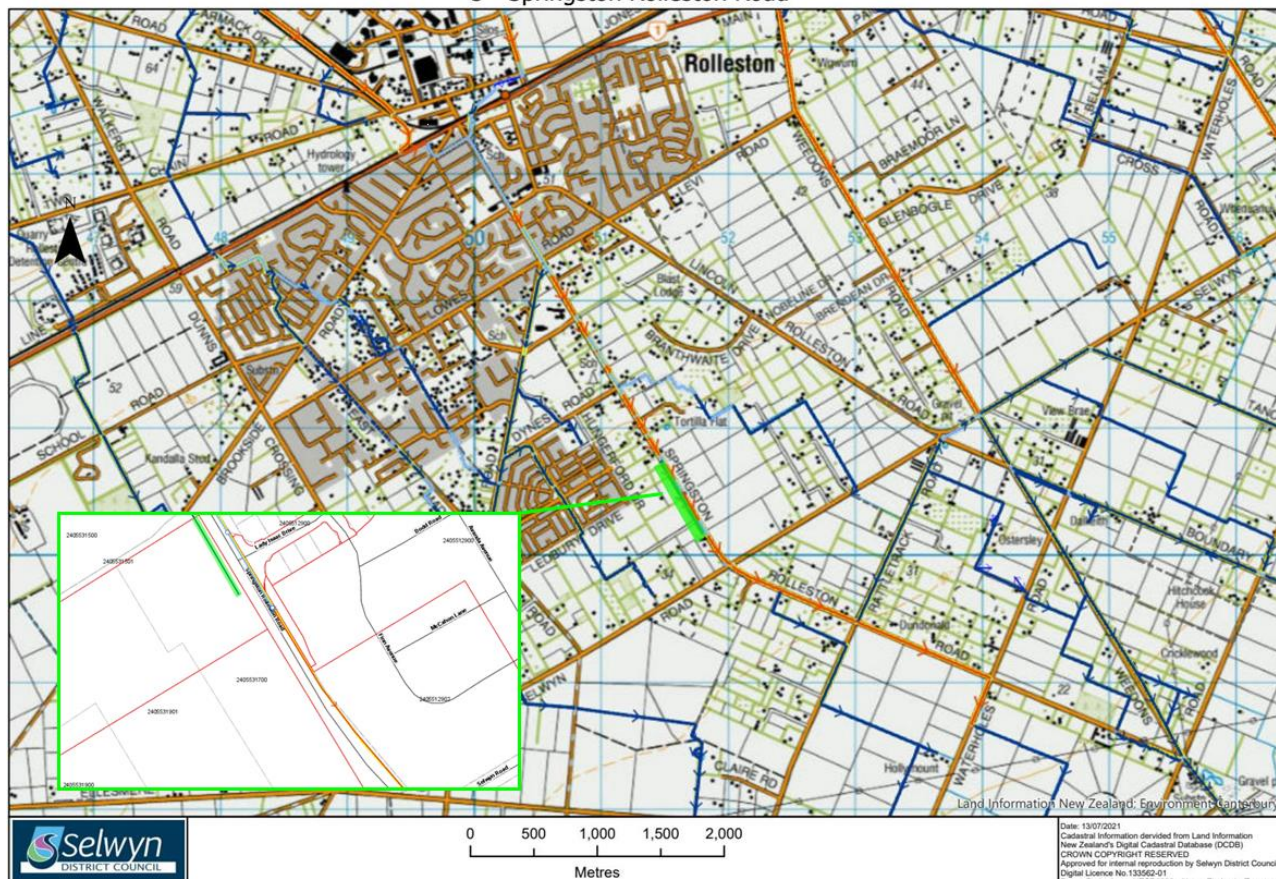
**Reason for Closure:** Poor and unreliable supply, alternative sources of stock water available. Race is understood to be currently dry.

**Details of Closure:** This is a minor end of line race. The closure only requires the supplying divide to be shut off. No viable alternative options to closure is practical for the proposal.

**Closure Reference:** #3 Springston Rolleston Road

**Map and Location:**

3 - Springston Rolleston Road



**Scheme:** Paparua

**Length of Proposed Closure:** 0.4 km

**Application Received From:** Hughes Developments Ltd

**Number of Affected Properties:** 1

**Number of Properties agreed to Closures:** 1 – 100 %

**Percentage Loss of Rating Income:** 0.00 %

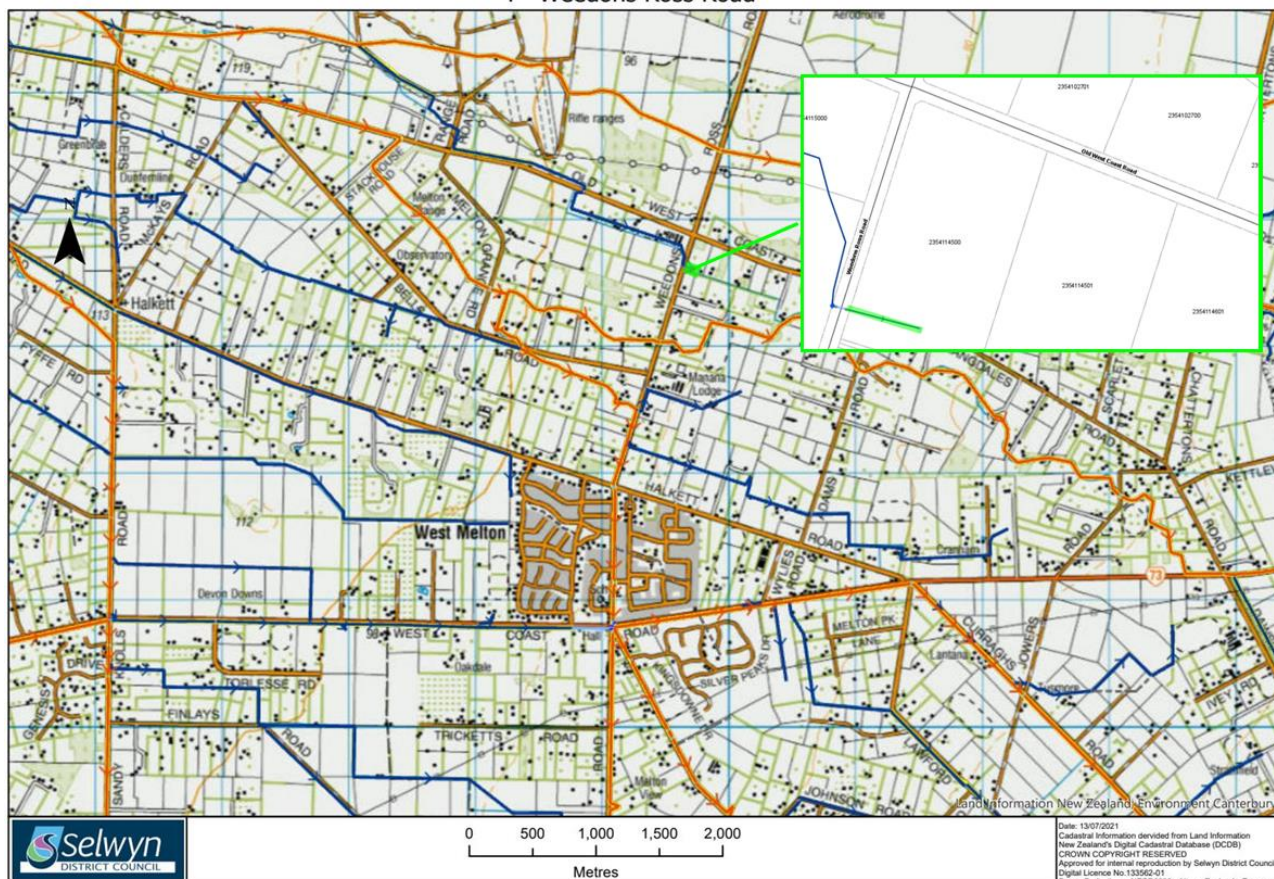
**Reason for Closure:** Land is being developed to allow for housing. Stock water is no longer required and the race currently terminates to ground within the property boundary.

**Details of Closure:** This is a minor end of line race. The closure requires a soak pit to be installed at the termination point. No viable alternative options to closure is practical for this proposal.

**Closure Reference: #4 Weedons Ross Road**

**Map and Location:**

4 - Weedons Ross Road



**Scheme: Paparua**

**Length of Proposed Closure: 0.1 km**

**Application Received From: P Huntingford**

**Number of Affected Properties: 1**

**Number of Properties agreed to Closures: 1 – 100 %**

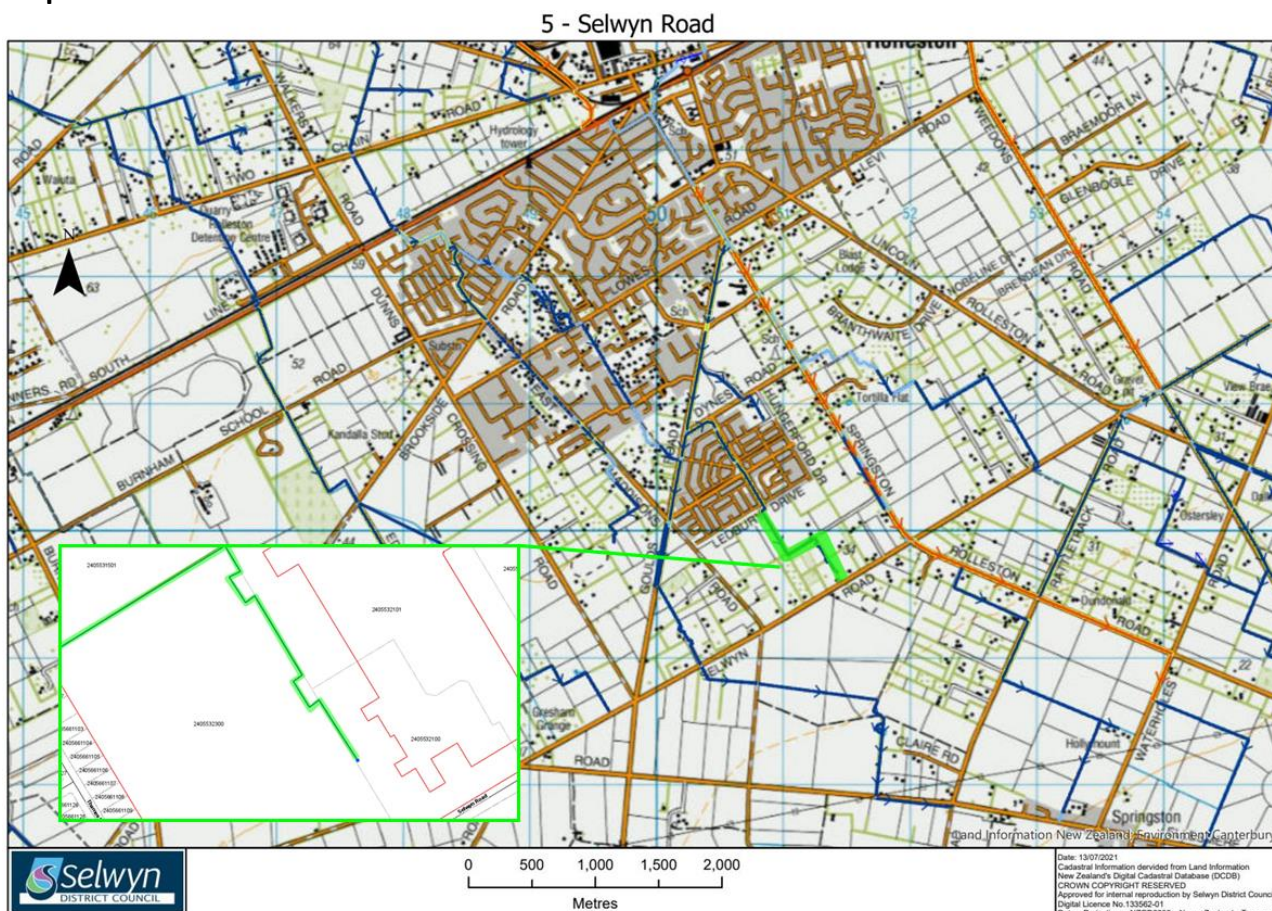
**Percentage Loss of Rating Income: 0.02 %**

**Reason for Closure:** Poor and unreliable supply, alternative sources of stock water available. The race currently terminates to ground within the applicants property.

**Details of Closure:** This is a minor end of line race. The closure requires a soak pit to be installed at the termination point. No viable alternative options to closure is practical for this proposal.

**Closure Reference:** #5 Selwyn Road

**Map and Location:**



**Scheme:** Paparua

**Length of Proposed Closure:** 0.6 km

**Application Received From:** Hughes Developments Ltd

**Number of Affected Properties:** 1

**Number of Properties agreed to Closures:** 1 – 100 %

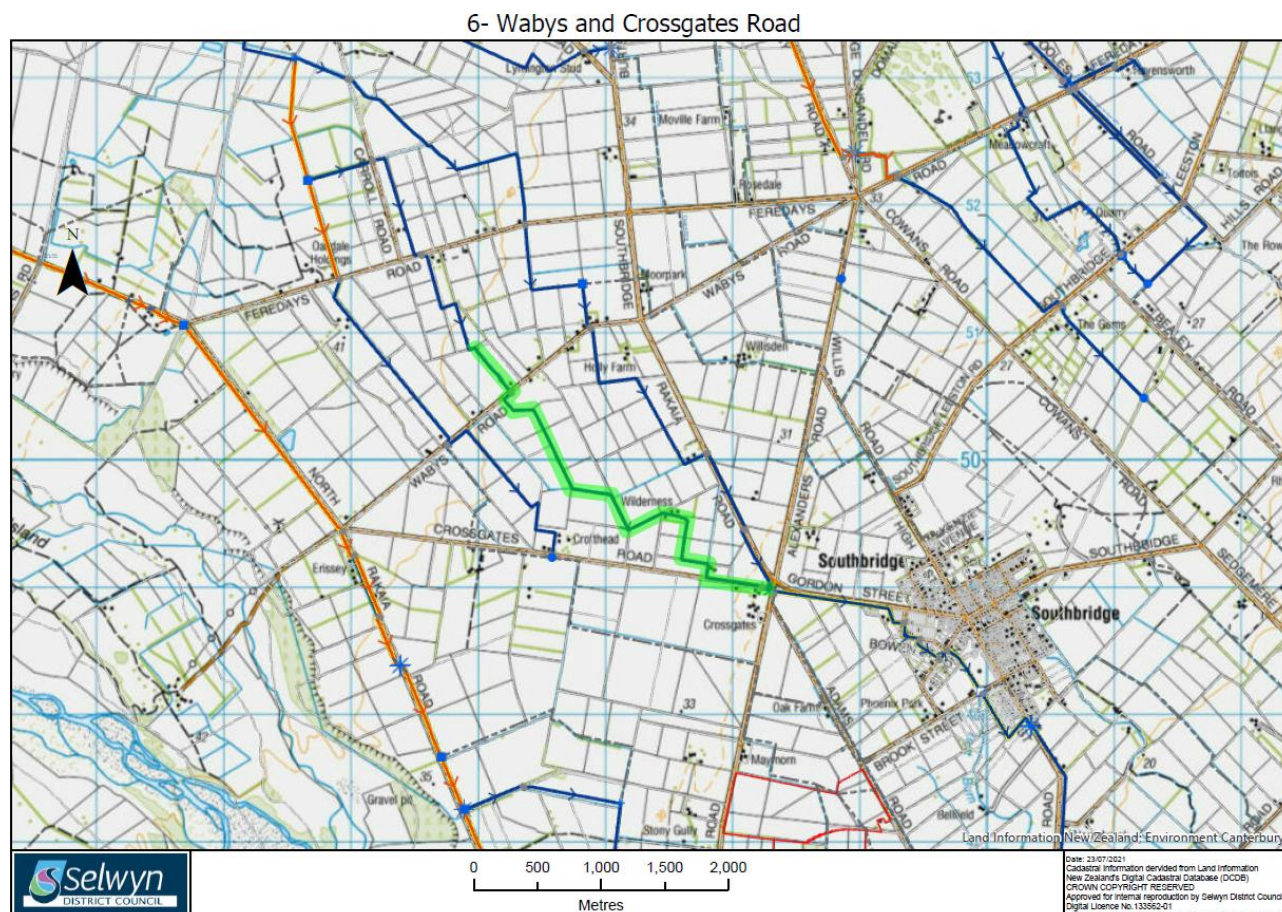
**Percentage Loss of Rating Income:** 0.00 %

**Reason for Closure:** Land is being developed to allow for housing. Stock water is no longer required and the race currently terminates to ground within the property boundary.

**Details of Closure:** This is a minor end of line race. The closure requires a soak pit to be installed at the termination point. No viable alternative options to closure is practical for this proposal.

**Closure Reference: #6 Wabys and Crossgates Road**

**Map and Location:**



**Scheme: Lower Ellesmere**

**Length of Proposed Closure: 3.8 km**

**Application Received From: ID and MT Lowery Ltd.**

**Number of Affected Properties: 9**

**Number of Properties agreed to Closures: 8 – 89 %**

**Percentage Loss of Rating Income: 0.25 %**

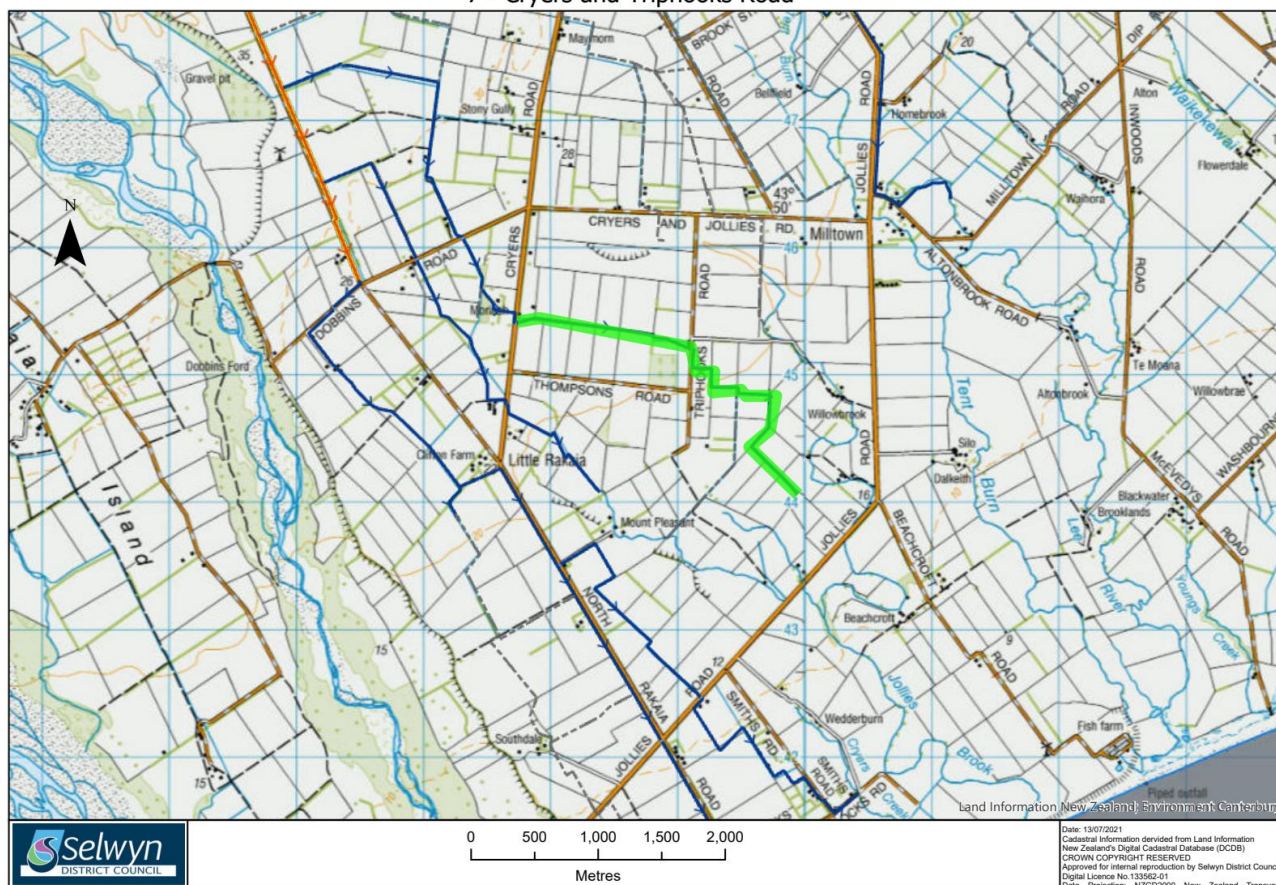
**Reason for Closure:** Poor and unreliable supply, alternative sources of stock water available. This race has multiple sinkholes. It is understood this race is currently dry.

**Details of Closure:** This is a large section of race, but due to reliability issues this is not used to help balance flows across the scheme or supply other areas. No viable alternative options to closure has been identified for this proposal. This Race has been identified as having high ecological values, further investigation prior to closure is required.

**Closure Reference: #7 Cryers and Triphooks Road**

## Map and Location:

### 7 - Cryers and Triphooks Road



**Scheme:** Lower Ellesmere

**Length of Proposed Closure:** 3.4 km

**Application Received From:** C L Greenwood

**Number of Affected Properties:** 6

**Number of Properties agreed to Closures:** 6 – 100 %

**Percentage Loss of Rating Income:** 0.15 %

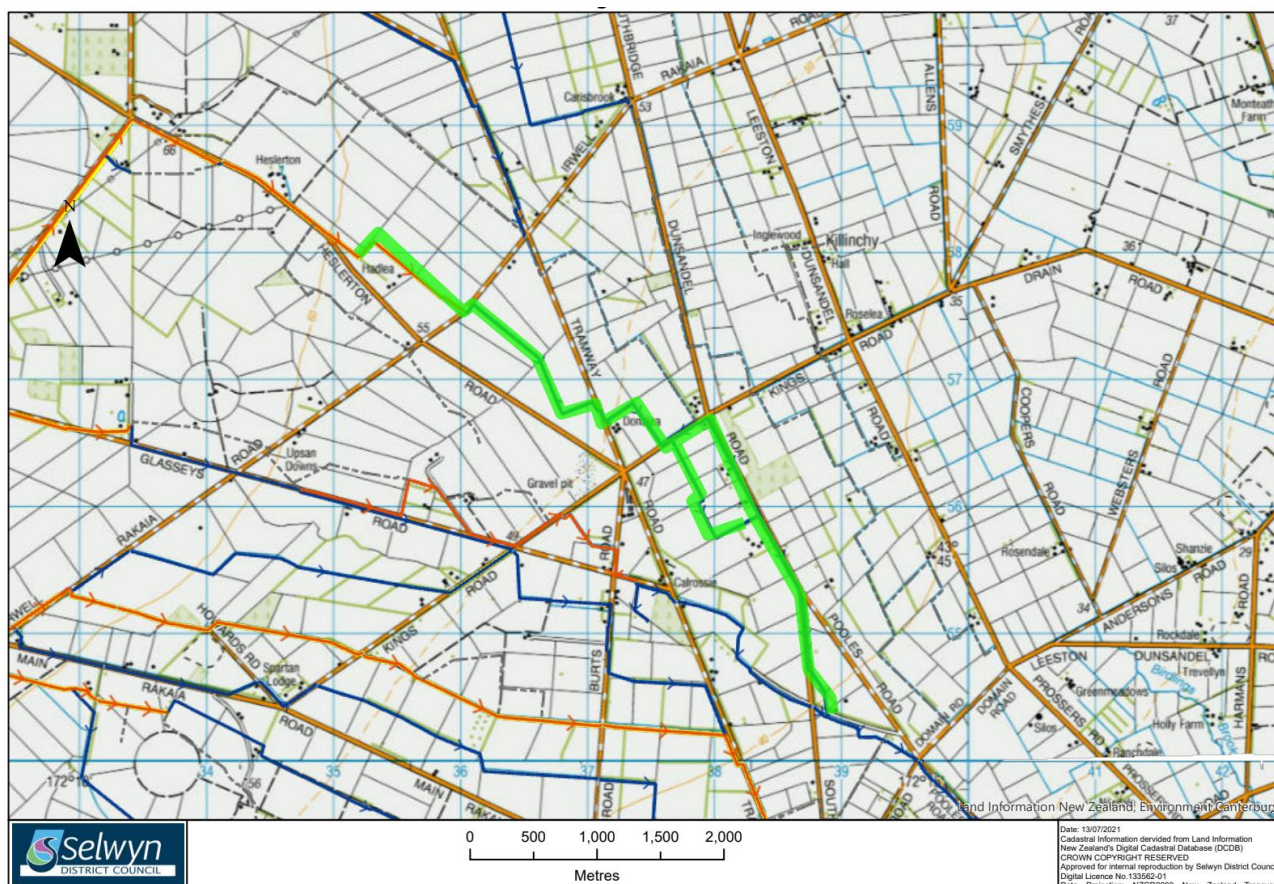
**Reason for Closure:** Poor and unreliable supply, alternative sources of stock water available.

**Details of Closure:** This section is the end the race. The closure requires a soak pit to be installed at the termination point. No viable alternative options to closure has been identified for this proposal.

**Closure Reference:** #8 Tramway and Southbridge Dunsandel Road

## Map and Location:

### 8 – Tramway and Southbridge Dunsandel Road



**Scheme:** Lower Ellesmere

**Length of Proposed Closure:** 6.7 km

**Application Received From:** RN & EJ Davidson Farms Ltd.

**Number of Affected Properties:** 5

**Number of Properties agreed to Closures:** 5 – 100 %

**Percentage Loss of Rating Income:** 0.26 %

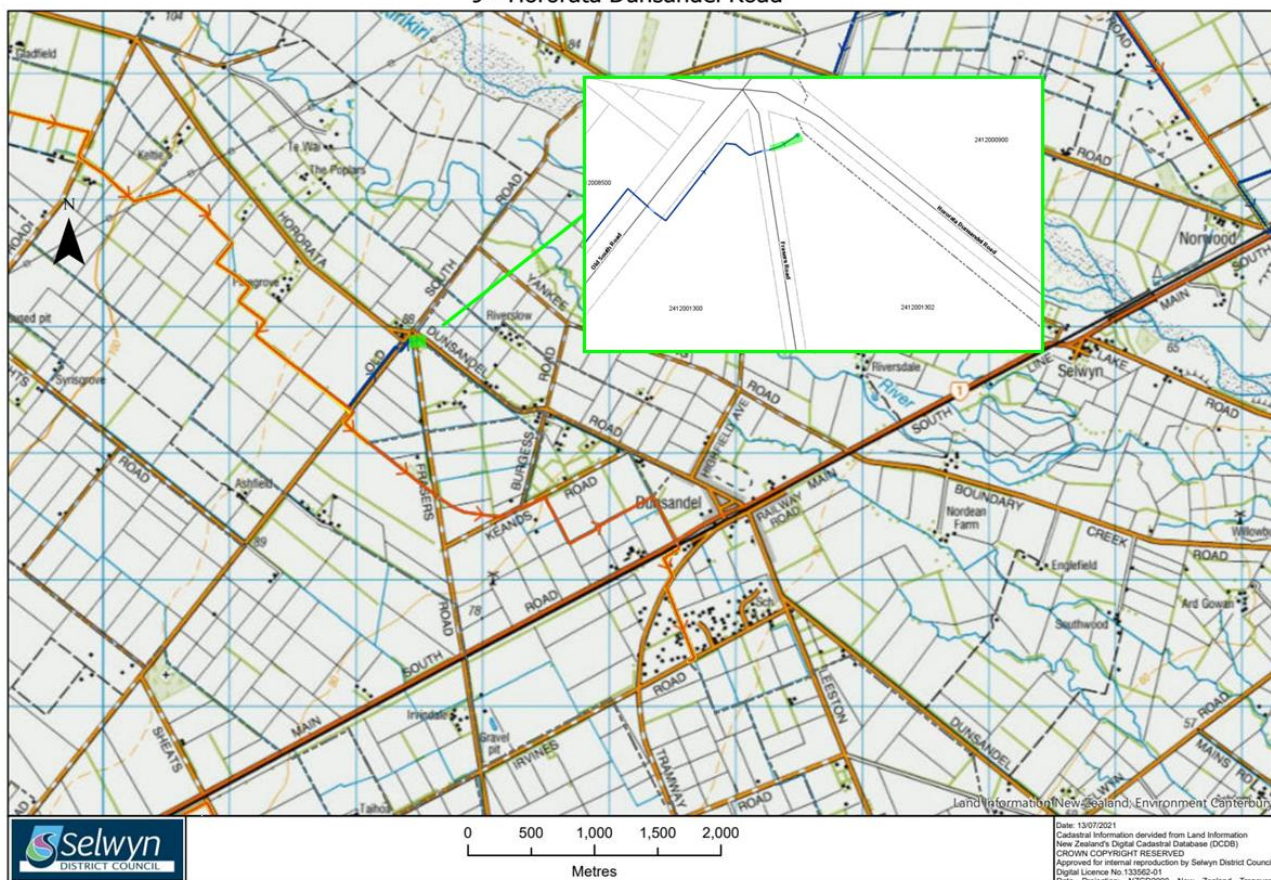
**Reason for Closure:** Alternative sources of stock water available and this race is no longer required by the landowners.

**Details of Closure:** This is a large section of race, but due to reliability issues this is not used to help balance flows across the scheme or supply other areas. The closure requires a soak pit to be installed at the termination point. No viable alternative options to closure has been identified for this proposal.

**Closure Reference:** #9 Hororata Dunsandel Road

## Map and Location:

9 - Hororata Dunsandel Road



**Scheme:** Upper Ellesmere

**Length of Proposed Closure:** 0.1 km

**Application Received From:** B GT Wilson

**Number of Affected Properties:** 1

**Number of Properties agreed to Closures:** 1 – 100 %

**Percentage Loss of Rating Income:** 0.03 %

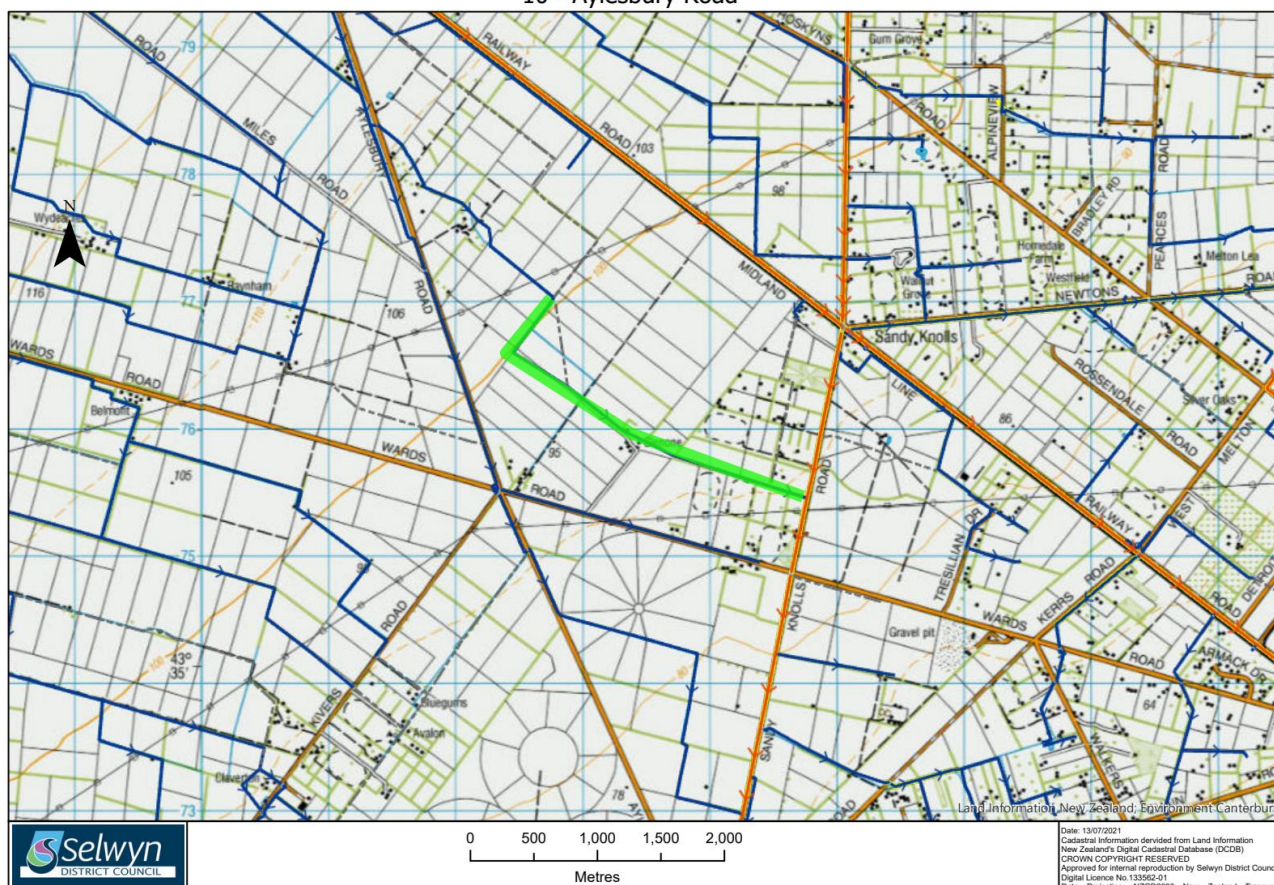
**Reason for Closure:** Alternative sources of stock water available and this race is no longer required by the landowner. This race is unreliable and only serves a minor part of the applicants' property. Reliability issues are common especially during the summer months.

**Details of Closure:** This is a minor section of race, and the race terminates within the applicants property. The closure requires a soak pit to be installed at the termination point. No viable alternative options to closure has been identified for this proposal.

**Closure Reference:** #10 Aylesbury Road

## Map and Location:

10 - Aylesbury Road



**Scheme:** Malvern

**Length of Proposed Closure:** 3.2 km

**Application Received From:** W Seaton

**Number of Affected Properties:** 7

**Number of Properties agreed to Closures:** 6 – 86 %

**Percentage Loss of Rating Income:** 0.28 %

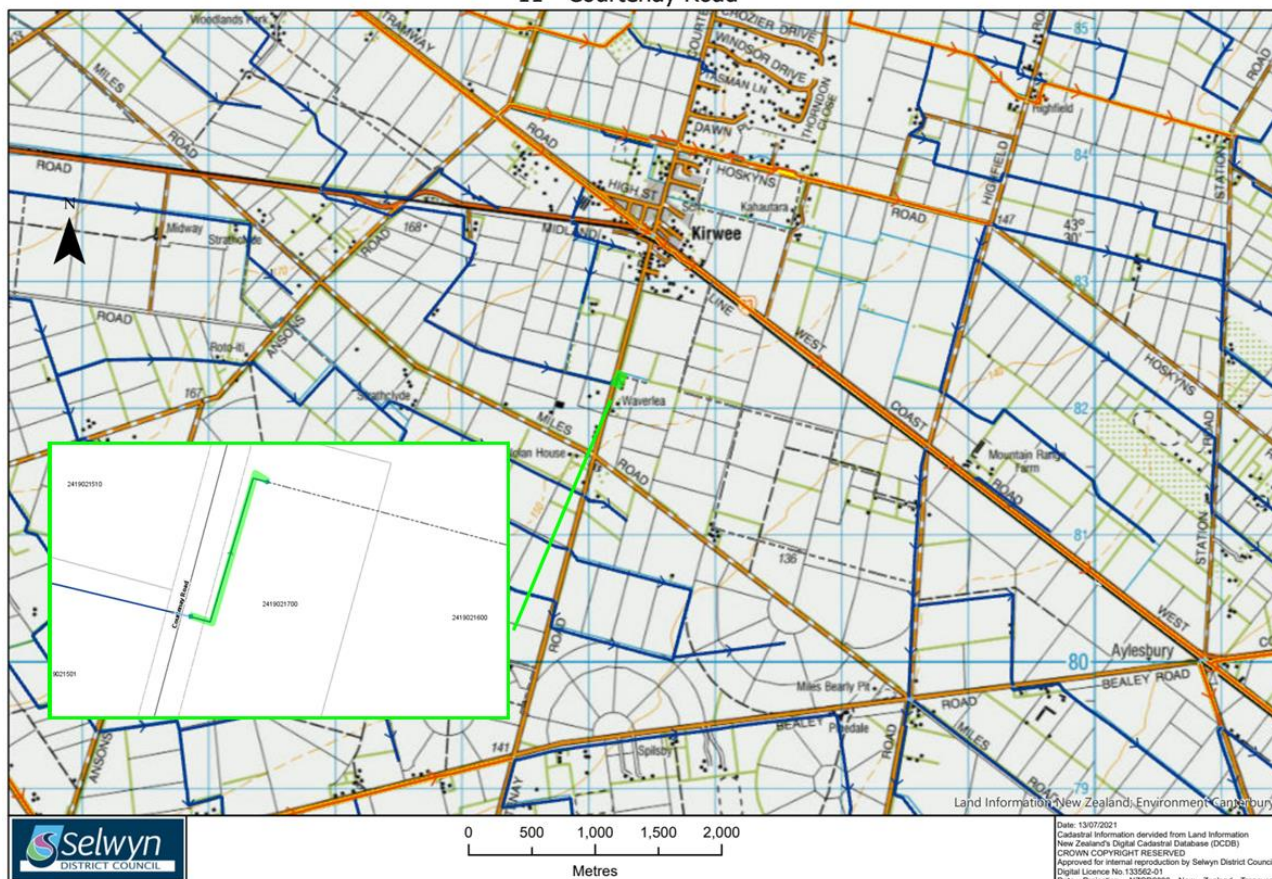
**Reason for Closure:** Alternative sources of stock water available and this race is no longer required by the landowners. This race is prone to reliability issues especially during the summer months.

**Details of Closure:** This is a large section of race, but due to reliability issues this is not used to help balance flows to top up the Paparua scheme. The closure requires a soak pit to be installed at the termination point. No viable alternative options to closure has been identified for this proposal.

**Closure Reference:** #11 Courtenay Road

## Map and Location:

11 - Courtenay Road



**Scheme:** Malvern

**Length of Proposed Closure:** 0.1 km

**Application Received From:** W Brittenden

**Number of Affected Properties:** 1

**Number of Properties agreed to Closures:** 1 – 100 %

**Percentage Loss of Rating Income:** 0.01 %

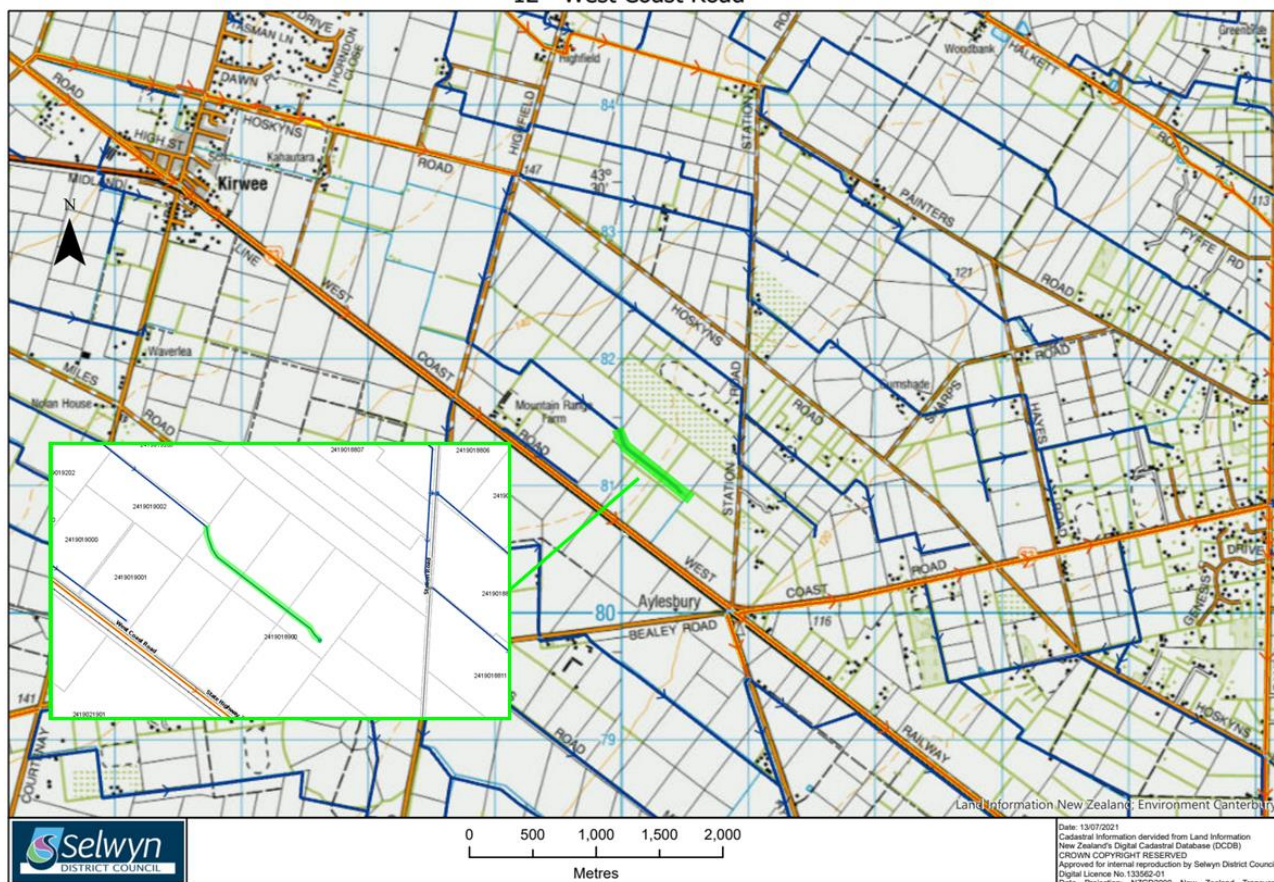
**Reason for Closure:** This race causes problems to the applicants' property such as flooding. Alternative sources of stock water available and this race is no longer required by the landowner. This race is unreliable and only serves a minor part of the applicants' property. Reliability issues are common especially during the summer months.

**Details of Closure:** This is a minor section of race, and the race terminates within the applicants property. The closure requires a soak pit to be installed at the termination point. No viable alternative options to closure has been identified for this proposal.

**Closure Reference:** #12 West Coast Road

## Map and Location:

### 12 - West Coast Road



**Scheme:** Malvern

**Length of Proposed Closure:** 0.7 km

**Application Received From:** A M Seaton

**Number of Affected Properties:** 1

**Number of Properties agreed to Closures:** 1 – 100 %

**Percentage Loss of Rating Income:** 0.09 %

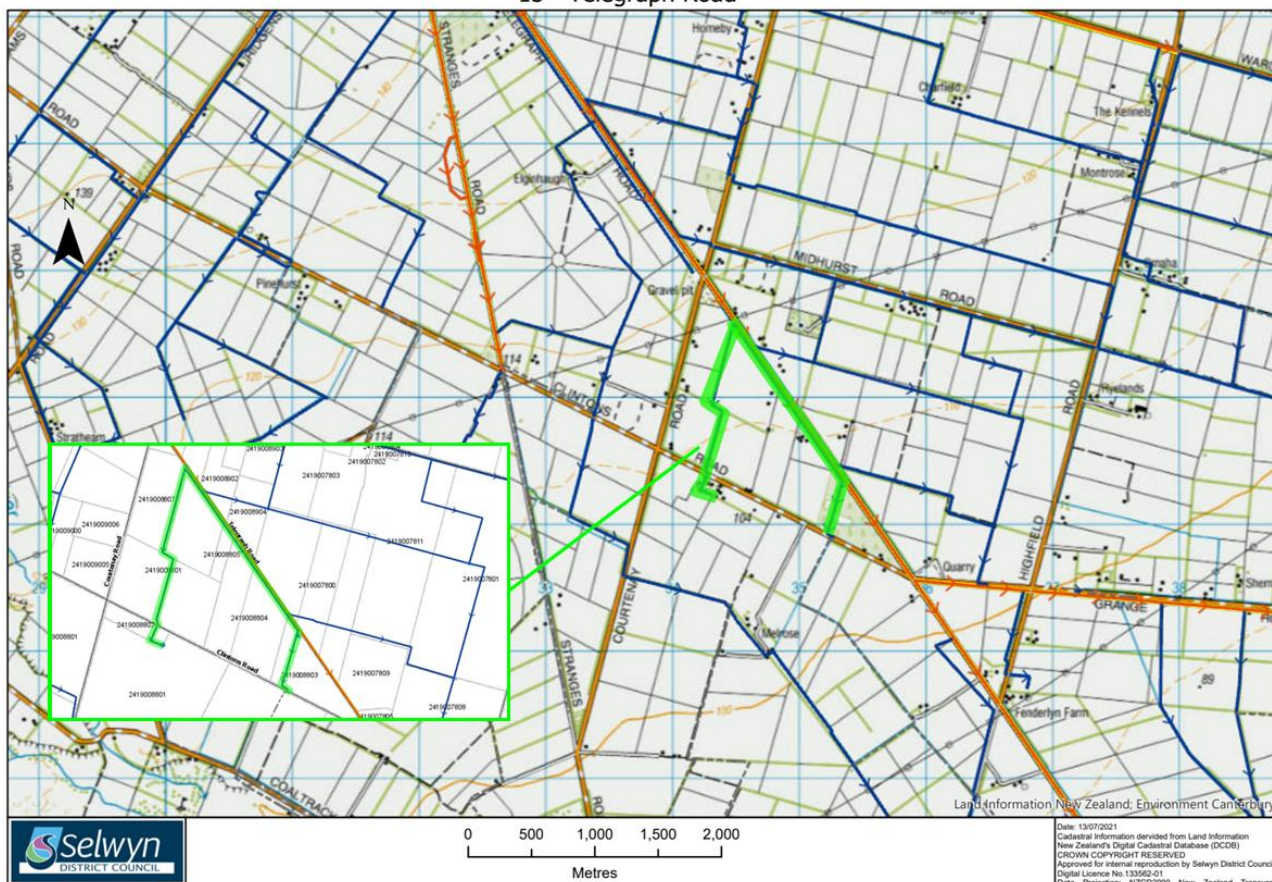
**Reason for Closure:** Alternative sources of stock water available and this race is no longer required by the landowner. This race is unreliable and only serves a minor part of the applicants' property. Reliability issues are common especially during the summer months.

**Details of Closure:** This is a minor section of race, and the race terminates within the applicants property. The closure requires a soak pit to be installed at the termination point. No viable alternative options to closure has been identified for this proposal.

**Closure Reference:** #13 Telegraph Road

## Map and Location:

13 - Telegraph Road



**Scheme:** Malvern

**Length of Proposed Closure:** 3.6 km

**Application Received From:** B & T Meyer

**Number of Affected Properties:** 5

**Number of Properties agreed to Closures:** 4 – 80 %

**Percentage Loss of Rating Income:** 0.10 %

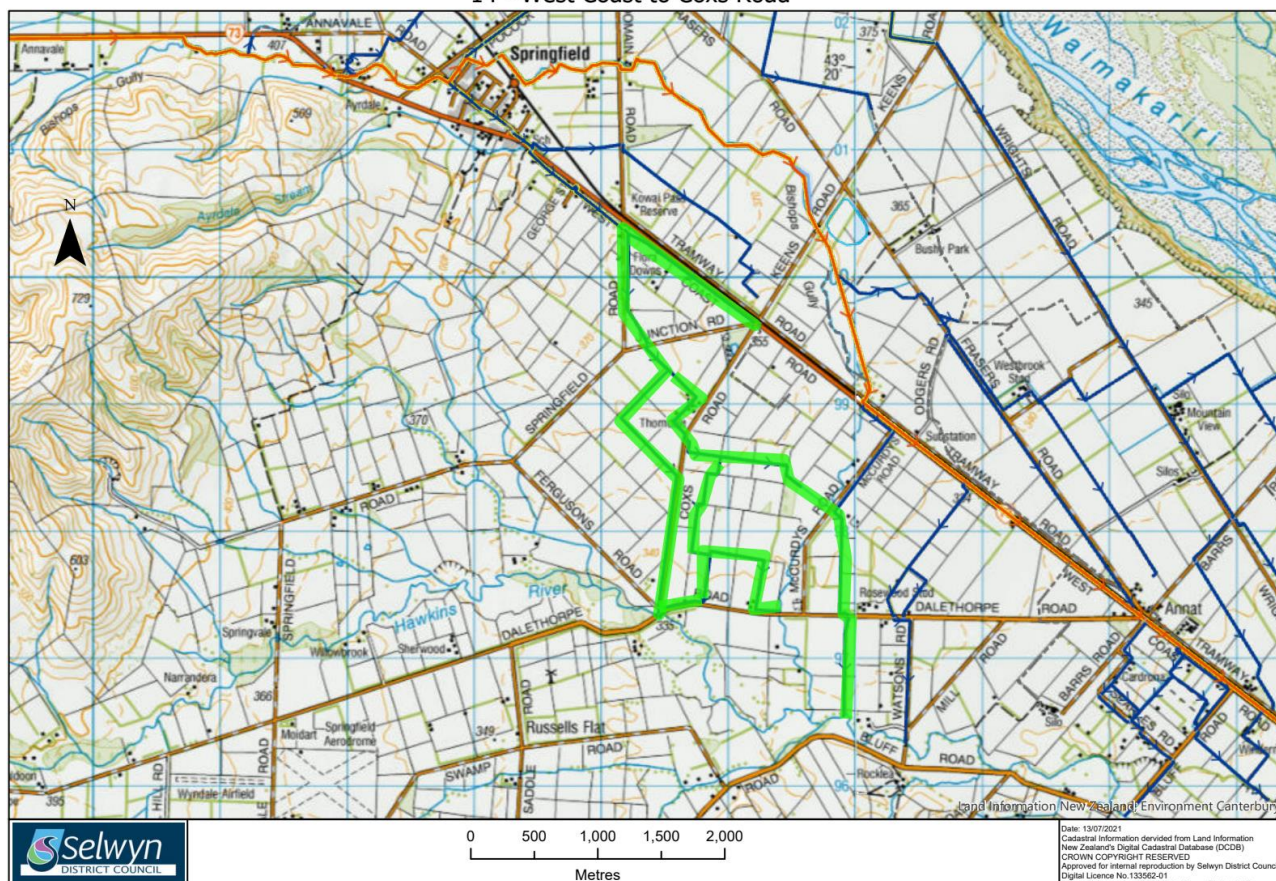
**Reason for Closure:** Race is no longer required by the applicants as they have alternative sources of stock water available.

**Details of Closure:** This is an end of line race. The closure only requires the supplying divide to be shut off. No viable alternative options to closure is practical for this proposal.

**Closure Reference:** #14 West Coast to Dalethorpe Road

**Map and Location:**

14 - West Coast to Coxs Road



**Scheme:** Malvern

**Length of Proposed Closure:** 9.6 km

**Application Received From:** Central Plains Water Limited

**Number of Affected Properties:** 9

**Number of Properties agreed to Closures:** 8 – 89 %

**Percentage Loss of Rating Income:** 0.23 %

**Reason for Closure:** Race is no longer required by the applicants as they have alternative sources of stock water available. Most properties are now connected to CPW, and connection is available for remaining properties with no alternative supply of stock water.

**Details of Closure:** This is an end of line race. The closure requires a soak pit to be installed at the termination point. No viable alternative options to closure is practical for this proposal.