

ELECTIONS 2025





The Waikirikiriri Selwyn District

District population 2024 (estimated)*

86,000+

Projected population 2034 (estimated)*

109,000+

District households 2024 (estimated)*

29,900+

Projected households 2034 (estimated)*

38,600+

Average resident's age*

37

***Source: Infometrics and Stats NZ.**



What is council responsible for?

- Infrastructure (water and roads)
- District and urban planning
- Local regulatory services, such as building consents, dog control, liquor licensing
- Developing and maintaining parks, recreation, libraries, community halls, sports and recreation facilities, and cemeteries
- Waste and refuse
- Civil Defence and emergency management



Waikirikiri Ki Tua Future Selwyn

- A long-term approach to intergenerational wellbeing, sustainability, resilience, growth, change, and development
- Strategic and spatial direction for navigating our future
- Alignment between all

Our overarching strategic direction for Waikirikir Selwyn



**Te Aka
ā-Rautaki**
Strategic
Priorities



**Tō tātou Whatuka
Wai Ua Kahuraki
me te Kākāriki**
Our Blue-Green
Network



Ō tātou Waka
Our Transport



Ō tātou Kāika
Our Housing



Ō tātou Hapori
People &
Communities



Ō tātou Ōhaka
Our Economy



Tō tātou Tūāhaka
Our Infrastructure



Outputs



Area Plans



District Plan



Long-Term Plan



Action Plans

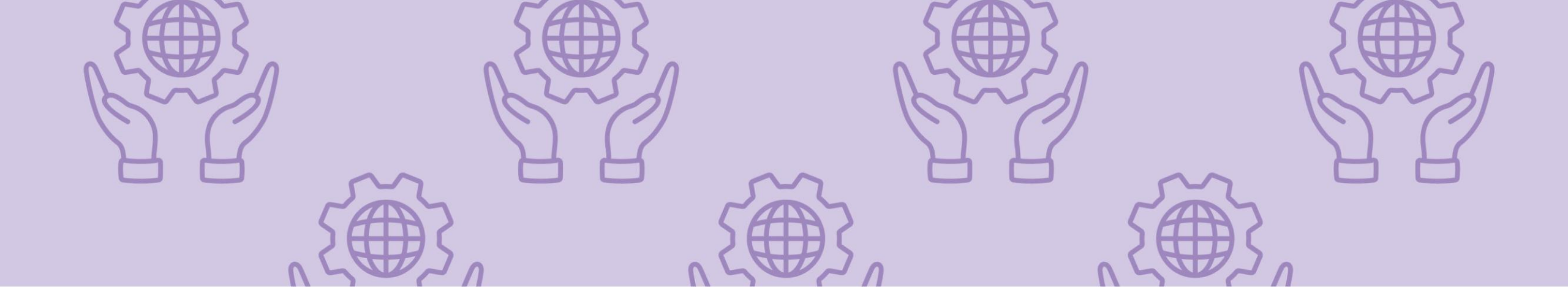


Policies/Bylaws



How council operates

- Governing body
- Chief executive
- Decision making
- Working together



The four pillars of Governance

1. Determining purpose
2. Effective governance culture
3. Holding to account
4. Effective compliance



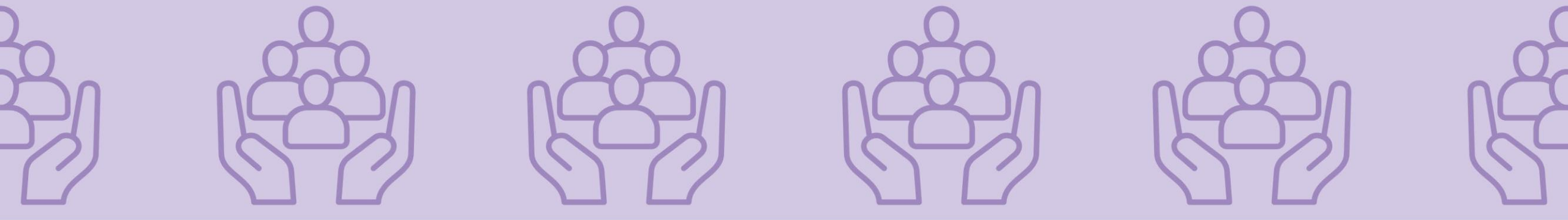
How elected members serve our community

- Work together to provide strategic direction at Council
- Provide governance for the District
- Engaging with residents
- Set strategic direction for the CEO to deliver
- Consider local, regional, and national opportunities and challenges for Waikirikiri Selwyn
- Participating in civic events



How much of my time is needed?

- Term of office is three years for all positions
- Weekly and monthly time commitments vary
- Some work is outside of the traditional “9 to 5”
- Reading information and supporting material
- Council meetings, briefings, and sub-committees
- Attending hearings and deliberations
- Supporting our teams during consultations



Support for elected members

- Institute of Directors Course for Governance
- LGNZ training package – Akona
- Attendance at LGNZ and Sector meetings
- Induction to Council



Remuneration

Office	Annual remuneration (\$)
Mayor	152,295
Deputy Mayor	67,762
Councillor with no additional responsibilities	56,468
Councillor (minimum allowable remuneration)	41,600
Malvern Community Board Chairperson	19,670
Malvern Community Board Member	9,835

These rates will apply until October 2025 and will be revised after the 2025 triennial election.



Malvern Community Board (MCB)

- Ensure smaller communities' voices aren't lost in the big picture conversations.
- Important part of providing information from the Council back to the community.
- Councils can delegate responsibilities and decision-making powers to community boards if they wish.
- Malvern Community Board represents the Tawera Malvern area:
 - 5 roles – 2 in Tawera subdivision and 3 in the Hawkins subdivision
 - One appointed member (Councillor) representing the Tawera Malvern Ward.
- Elected during local body elections – same process any other elected member
 - Chairperson and Deputy Chairperson are usually elected (by vote) at the first meeting of the community board.



MCB: Meetings

- Same Standing Orders and Code of Conduct as Council
- Meet monthly at Darfield Library Centre for up to 2 hours
- Members provide written reports for each meeting
- Financial report and staff presentations specific to Tawera Malvern ward are also regular features of the agenda
- Board is supported by an Executive Leadership Team (ELT) member and a governance staff member.



MCB: Legislation

- Community boards are unincorporated bodies which are neither local authorities nor committees.
- Local Government Act, Part 4, Section 49



Helpful documents

LGNZ

- Candidate Guidebook
- The Good Governance Guide
- Community Board Candidates Guide
- Community Board Chair Guide

Council documents:

- Annual report
- Annual plan
- Long-term plan
- Pre-election report (4 July)

THANK YOU

