

		Friday 27 September 2024	
(10 Min)	Sub #	Person / Session	Organisation
		Agenda Lead Page	
		Schedule	
9.30	574	Philip Whiten	
9.40	459	Bede Laracy	Raumati Community Board
9.50	609	Evan Frew	
10.00	325	Basil and Trudi Meyer	
10.10	266	Charlie Draper	
10.20		Morning Tea	
10.30		Morning Tea	
10.40	175	Gareth Payne	
10.50	469	Name Withheld	
11.00	541	Trevor Taege	
11.10	445	Nikki Chippendale	
11.20	446	Bruce Davey	
11.30		Overrun / reflection time	
11.40			
11.50			
12.00			
12.10			
12.20			
12.30			
12.40		Closing Karakia	

Submitter Number: 574

Full Name: Philip Whiten

Organisation:

Property Location: Malvern

Wish to speak to the submission: Yes

Initial Proposal Submission Form

Selwyn District Council is conducting a representation review to determine how the communities that make up the Waikirikiriri Selwyn district should be represented in our coming elections.

Please read the consultation document and information available online at www.selwyn.govt.nz/repreview before completing and dropping off this form at a Council Library and Service Centre by 5pm on Thursday 12 September.

You can make a submission using this form, or by completing the online submission form at selwyn.govt.nz/repreview.

If you need extra space for your submission, use additional paper and attach it to this form. Please include your name on the additional paper.

Anyone can make a submission. Submissions will only be used for the purpose of this consultation process. All submissions will be considered by Council before making a decision.

Privacy statement

Submissions are part of the public consultation process, and are a public record. Submissions will be made publicly available on the Council website and in official documents. We will remove any contact details.

Submitter details

Please note: all fields marked with an asterisk (*) are compulsory. These details will be used for the purpose of contacting you about this consultation.

First name* Philip

Last name* Whiten

Address

Tel

Postcode

Council

Email

Are you submitting on behalf of an organisation?

☐ Yes ☒ No

If yes, please state the name of the organisation*

Do you wish to attend a hearing to present your submission in person?*

☒ Yes ☐ No

If yes, someone will be in contact with you to arrange the date and time.

Which electoral ward do you live in or own property in?*

☐ Ellesmere ☒ Malvern

☐ Rolleston ☐ Springs

☐ I don't live in or own property in these wards

Questions

1. Do you support the initial proposal to change the ward boundaries and the number of councillors (four wards, eight councillors) for local elections?

☐ Yes ☒ No

Please add your comments

What reform should remain in Malvern.

2. Do you support the initial proposal to have no community boards? This would mean that the Malvern Community Board would be disestablished.

☐ Yes ☒ No

Please add your comments

We need local representation
Selwyn Council have no way of knowing what we think or feel about issues.

3. Do you support the name suggestions for the four local electoral wards from Malvern; Rolleston; Ellesmere; and Springs to Tawera Malvern Ward; Kā Mānia Rolleston Ward; Te Waihora Ellesmere Ward; and Kā Puna Springs Ward?

☐ Yes ☒ No

Please add your comments

Wait until the wards
know who they are repre-
senting and then ask
this naming question

4. Do you have any other comments about our initial proposal for our representation arrangements?

Nest melton should stay in
Malvern.

The Waimakariri River is
the northern boundary of
Malvern ward.

Springfield, Darfield, Kirwee
and Nest melton all share
this in common.

Flood control, stop bank
security and damage all
affect these towns.

Nest melton has nothing
in common with Prebbleton.
Kirwee, Tai Tapu & Springfield!

Return this submission form by:

- Dropping it off at one of our Representation Review stands or with our Customer Service Teams at:

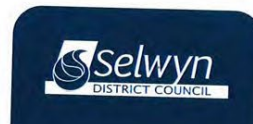
- Council Rolleston Offices 2 Norman Kirk Drive, Rolleston
- Te Ara Ātea 56 Tennyson Street, Rolleston
- Darfield Library 1 South Terrace, Darfield
- Leeston Library 19 Messines Street, Leeston
- Lincoln Library 22 Gerald Street, Lincoln

- Posting it to:

- Freepost 104 653
PO Box 90
Rolleston 764

All posted submissions must be received by Council by 5pm, 12 September 2024. Please allow time for your submission to be delivered by this deadline.

- Scanning and emailing it to
repreview@selwyn.govt.nz



Submitter Number: 459

Full Name: Bede Laracy

Organisation: Raumati Community Board

Property Location: I don't live in or own property

Wish to speak to the submission: Yes

Do you support the initial proposal to change the ward boundaries and the number of councillors (four wards, eight councillors) for local elections?

Yes

Please add your comments

Do you support the initial proposal to have no community boards? This would mean that the Malvern Community Board would be disestablished.

No

Please add your comments

I have a document to attach as a submission

Do you support the name suggestions for the four local electoral wards?

Yes

Please add your comments



11 September 2024

Dear Selwyn Council,

I am the Chair of the Raumati Community Board, which is part of Kapiti Coast District Council (KCDC). I understand you are currently debating a proposal to disestablish your only Community Board. On behalf of our Board, I would like to speak in favour of not proceeding with that proposal.

In 2021, KCDC underwent a representation review and similarly sought to disestablish Community Boards. In Kapiti there were, at that time, four Community Boards across the district. The concerns regarding Community Boards were varied, but the main concerns were that they were ineffective, tended to carry the voices of interest groups, and that they were generally problematic. An externally contracted research company concluded that the community at large did not believe there was value in them. As such, there was a proposal made to disestablish them.

In response to that proposal, the Kapiti community came out strongly in favour of keeping Community Boards. The number of submissions on the representation review was unusually high, and in almost all cases the support for Community Boards was strong. It appears, therefore, that the concerns, even though supported by external research, did not match the actual community sentiment. The representation review ultimately went to the Local Government Commissioner, who made the wise decision to keep the Community Boards.

One submission went as far as proposing the establishment of a new Community Board for Raumati, which at the time was in somewhat of a representational limbo being tied to Paekakariki at the Ward level, and to Paraparaumu at the Community Board level. The Local Government Commissioner saw sense in the submission, and as part of his assessment he ordered the establishment of the Raumati Community Board.

It's fair to say that the proposal to disestablish caused outrage. However, it also had the affect of revitalising Community Boards, as they had to reconsider whether they were fulfilling their obligations to their communities. The ones that did that have gone on to flourish, while the ones that did not still need to do some work to catch up. Key to the ongoing success of Community Boards is that Council took notice of the public sentiment and has started to support Community Boards, including allowing them to sit at Council and speak. Without that support, no amount of effort on the Community Boards would have elevated them from shouting into a void.

The Raumati Community Board, in particular, has been a standout performer for their community. Whereas Council saw no need to establish a Raumati Community Board, the Board was nevertheless established and in its first term it received an award at the recent CBEC Community Board Awards for Engaging with Communities. Attached is the Award application to highlight the depth of work the Board has carried out, which indicates the level of benefit the community has received from having the Board.



Other Boards have gone on to provide highly valuable service to their communities, and that was also reflected in the CBEC Awards. Across 3 categories there were 9 nominees. 3 of those nominees were from Kapiti, and Kapiti received a win and a special mention. A great outcome given they were facing disestablishment only three years ago due to being ineffective.

It's easy to forget the value that Community Boards provide. If they are not properly supported and disputes are allowed to overtake core business, then they can become ineffective and a waste of rate payer resource. However, when they function as they should, they provide a valuable connection between Council and community, they provide an important avenue for people in the community to engage on local issues, they advocate for their community on those issues in a way that Councillors often can't, and they provide a useful training ground for future Local Government leaders.

We highly recommend that Councils establish/maintain Community Boards. We believe the Kapiti example has shown the value that Community Boards provide, and the need to ensure they are properly supported and provided with a direct voice into Council. We therefore make a plea to Selwyn Council not to disestablish the Melvern Community Board

Yours faithfully

Bede Laracy
Chair
Raumati Community Board
Bede.Laracy@kapiticoast.govt.nz

CBEC Award Nomination**Nominee:** *Raumati Community Board***Category:** *Engaging with Communities* (also sits comfortably within the Enhancing Communities and Partnering With Councils categories)**Project:** *Our Vision for Raumati* (Raumati Vision Project)**Word Count:** **2,600** (excluding footnotes and appendices)

The Raumati Vision Project launched publicly in late January 2023 with a broad purpose of developing a long-term vision for Raumati. More deeply, the Vision Project had goals such as fostering a unique identity for Raumati, establishing a unified direction for the community, promoting individual and group initiatives within the community, and serving as a vehicle to advocate for the community. While fulfilling those aims, the Vision Project pioneered a fresh approach to engagement, and established better connections with both local and central government. Key to its success was its “by-the-people-for-the-people” approach, which kept the Vision Project focused on the local people and enabled it to build trust.

The Raumati Vision Project emerged out of a conversation between Ward Councillor Sophie Handford and Raumati Community Board Chair Bede Laracy. Raumati had previously been part of the combined Paraparaumu/Raumati Community Board, but Sophie and Bede’s advocacy led to the separation of Raumati and the establishment of the Raumati Community Board. The newness created a fresh sense of Raumati as its own place, and Sophie and Bede started to think about the possibilities if they were to take a bigger picture view of the community. Talks about a long-term vision developed, and they embarked on a process of exploration and discovery to figure out how to go about achieving their aim.

The first step was to develop a survey, which asked broad questions exploring issues such as what Raumati means to people, how people felt connected with Raumati, what their hopes for the future were, and what they would do if there were no budget limitations. The survey was sent out to individuals and groups in the community, and it was shared across social media. Around eighty responses were received, and they were good in-depth responses not merely yes/no answers. Survey responses were combined with Local Outcomes work done by the Council 15 years prior, and more recent strategic work completed for the local village, to create the primary material for the Vision Project. Local illustrator Lisa Richardson, from Lisa Draws Ideas,¹ then synthesized all the primary material and created an image that became the key engagement document.²

¹ <https://lisadrawsideas.com/about>

² See Appendix 1

With the Vision image in progress, and despite no evident web design experience or skills, Sophie and Bede developed a website.³ The aim was to create a fresh and lively vibe to encourage engagement. The main Vision image dominated the webpage, but broader information helped to ensure people knew who was behind the Vision Project, what their purpose was, and where it was intended to go. Local groups such as Chamber of Commerce, Low Carbon Kapiti, and Raumati Village, partnered with the Vision Project to give it credibility and visibility. The Vision Project was finally added into the Raumati Community Board Matters Under Action to formally bring it within the scope of the Board. Most importantly, the website allowed people to submit ideas directly and it provided links to a Facebook page.⁴

With the main Vision image in the public domain the aim was then to go out to the community, socialise the idea, and ask the community what they like about it, what they don't, and what they think is missing. Immediately the Vision Project gained traction. The Facebook page grew quickly, locals engaged willingly, local papers got on board,⁵ and Council showed strong interest in it as a community project. In its wake, the Vision Project broke open new conversations within the community, and it created the basis for Council to develop a new method of doing its own engagement.

The concept of being "by-the-people-for-the-people" is one of the core values of the Vision Project. There was clear desire to ensure people felt actively involved in any outcomes. That value has driven every stage of the Vision Project, which meant the approach to engagement was an open and organic one. Rather than creating a hefty consultation document, as often happens with formal Council work, the Vision Project used the simple imagery to spark conversations. Every opportunity was taken to engage in an active and open manner.

Sophie and Bede met with individuals and groups, they presented to Council, and they attended events. They were asked to present to a Zone 4 hui from which came an invitation to see how vision work had developed in nearby Wainuiomata. Being a new concept, the Vision Project created curiosity and people were often relieved that they didn't have to jump through hoops just to have their view heard. Consequently, the Vision Project developed trust and it created social licence.

³ <https://www.ourvisionforraumati.nz/>

⁴ <https://www.facebook.com/groups/raumatiprject>

⁵ <https://www.nzherald.co.nz/kapiti-news/news/elected-duo-embrace-peoples-ideas-for-an-enhanced-raumati/5SKGZF0AB5E77OMQUP00Q25F4Y/> - see follow up article here: <https://www.nzherald.co.nz/kapiti-news/news/raumati-community-board-seeks-change-to-kapiti-coast-district-councils-long-term-plan/JEIXWDI4YJD7JFRJGTZK2Y46AY/>

At each point, people had the opportunity to view the Vision imagery and make comments by submission form, post-it note on the image, in some cases they drew all over copies of the image, or they could provide their own words in whatever form they felt comfortable. Submissions sometimes led to email conversations, which led to coffee conversations, which opened up whole new conversations. The aim was to allow people to decide for themselves how to engage.

Facebook became a place of activity for the Vision Project, and an area where the more traditional engagement approaches started to disappear. As ideas emerged, Facebook posts allowed real time feedback, and aspects of the Vision image could be posted with commentary and invitations for comment and input. The dialogic nature of the platform meant people could have conversations about an idea rather than just feeding their thoughts into a vacuum. So, the community was able to develop the ideas, not just comment on them, which created a sense of involvement and ownership.

The Facebook platform was also used to evaluate big ideas. For example, in Raumati we have a swimming pool building that has been empty for a decade. Many people in the area have wanted to do something with it, but plans have always stalled. So, the opportunity was put to the community through the Vision Project Facebook page, and a number of exciting and amazing ideas emerged. Those ideas were detailed and introduced to the community, and again people could feedback and discuss them in depth.⁶ Through the activity the Vision Project was able to prove to Council the level of interest in the space, and the depth of the desire for it to be used for the community. As such, the Vision Project showed its ability to speak to Council and to kickstart stalled projects.

Likewise, when Te Ara Korowai, a local community-based mental health well-being service, was coming under financial pressure the Vision Project was able to highlight the service to the community and help rally support for its ongoing survival.⁷ It became clear the Vision Project could provide support for the community at all kinds of levels and in all kinds of ways, including the ability to provide sound bases for advocacy through the Long-Term Plan (LTP).

This year Council has been consulting on its LTP. As part of the consultation, the Raumati Community Board filed a submission, and the Vision Project engagement became fundamental to supporting the points of advocacy. For example, the Raumati Community Board submitted to Council for funding to restore the old pool building. The Facebook activity gave the submission

⁶ See, for example, here <https://www.facebook.com/share/p/KtG8EZmB2iEVEppy/> and here <https://www.facebook.com/share/p/VjxwFBDLpRPzMR5/>

⁷ See Facebook post <https://www.facebook.com/share/p/f34U1t299bonGPDT/>

impetus, and imagery was used to show that it had support through the Vision Project - and therefore the community.⁸ Likewise the discussion on Te Ara Korowai meant the Raumati Community Board had a basis for showing there was strong support for the service in the community, and as a result they were able to secure \$30,000 of funding for the service through the LTP. Te Ara Korowai would not have received the funding had Council not seen the Vision Project as credible, which highlights the ability of the Vision Project to drive tangible outcomes for our community. It has not just been a talk-fest.

The Vision Project created a major local social event, with the Raumati Night Market.⁹ The event required partnering with local performing arts centre Te Raukura ki Kapiti.¹⁰ The aim of the event was to bring the community together for no reason other than to celebrate the community itself. The event was self-funded by Sophie and Bede, drawing no funds from Council or any other external source. There were food trucks, outdoor seating and games, market stalls, musicians, a light instalment, and an onsite licenced bar. Despite the freezing cold, people came in their droves, often walking rather than driving, and they had an awesome time celebrating the local community together. Local government and central government politicians attended, including then local MP Barbara Edmonds, all of whom have praised the Raumati Vision Project for its work in connecting with the Raumati community.

To deepen the engagement, the Vision Project ran two public meetings.¹¹ Locals were invited to attend, a presentation was given to introduce the Vision Project, and opportunities were provided for people to discuss ideas and provide input and submissions. Those meetings were well attended, and they gave the best opportunity to dig deep into any ideas people had. However, they also proved to be the area where the Vision Project found its hardest and most direct challenges.

One of the core principles in the process of developing the Vision was that Sophie and Bede would not decide what ideas made it onto the Vision image. Lisa Richardson, who does not live in Raumati, took charge of the primary material and she decided how to express it. Key to the decision was being able to assure people that the Vision Project leads did not cherry pick which ideas they liked, which gave the Vision Project integrity. One of the ideas that came through the survey was to create a 15-minute neighbourhood, and Lisa added the idea to the final Vision image. At the first public hui the strong opposition to the idea of 15-minute cities was evident and

⁸ See Appendix 2

⁹ See Facebook post <https://www.facebook.com/share/p/PCbZUYN7EyR75nUo/>

¹⁰ <https://teraukura.nz/>

¹¹ <https://www.facebook.com/share/p/zK9eY4Z7zSbtBeQB/>

at the second public meeting the message became even clearer. The Vision Project was accused of all manner of evils, including one member of the public accusing the Project leads of “trying to get people to participate in their own enslavement by stealth.”¹²

It's fair to say there was considerable heat on the debate. However, the 15-minute city issue also provided the opportunity to engage with a sector of the community that was otherwise feeling isolated and excluded, and which had been reluctant to engage with Council generally. The work done to manage the conflict helped to build trust and develop a strong connection with a whole new sector of the community. It has also provided the ability to connect with that sector on other contentious issues, which has been of enormous value to the Raumati Community Board and its ability to engage with the community ongoing.¹³

Soon after the Vision Project launched, Kainga Ora approached Sophie and Bede. They had purchased a 4-hectare block of land in Raumati late the previous year and had come across the Vision Project. Connecting with Kainga Ora through the Vision Project provided an opportunity to have direct engagement with them about the community they would be coming to. That connection led to an open public meeting run by the Raumati Community Board to engage with the community on their development, which attracted over one hundred people. It has also led to the Raumati Community Board establishing a Community Liaison Group to deal with Kainga Ora directly on the development, which is the first time Kainga Ora has willingly agreed to involve itself in such a group outside of consent requirements.¹⁴ The Raumati Vision Project has enabled direct relationship building with central government in a new way.

The initial stage of the Raumati Vision Project focused on Raumati Beach. Late in 2023 Sophie and Bede worked with the Raumati South Residents Association to develop a Vision for Raumati South.¹⁵ The two works have now merged to form a general Raumati Vision, which will be a key part of bringing the “two Raumatis” together into a unified identity, though the identities of the separate parts will also remain. Sophie, through the Vision Project, developed logos for the parts of Raumati as well as a general one.¹⁶ Those logos were then used as the basis for Community

¹² https://waikanaewatch.org/2023/04/08/dictionary-entry-of-the-week-4/?fbclid=IwZXh0bgNhZW0CMTAAR1PieC4Zr9zM_Lwz-YXv4SuujYydlkjlMdC7MxLOHS_QAjZ4NO5HcisNeo_aem_vRRb8OlvX_lapXgovx5ddA – see comment from Nova. See also article and comment at <https://waikanaewatch.org/2023/04/26/our-vision-for-raumati-the-story-so-far/>

¹³ See, for example, how the Raumati Community Board worked with the community on the issue of sea level rise in Kapiti <https://www.facebook.com/share/p/m3jV6jMAargHSDER/>

¹⁴ <https://www.nzherald.co.nz/kapiti-news/news/group-will-deal-directly-with-kainga-ora-about-raumati-beach-housing-proposal/DUBQNUY76ZGHHF3CETB6J36WAA/>

¹⁵ <https://www.facebook.com/share/p/1e8k5F8zXkBgD4Bb/>

¹⁶ See Appendix 3

Board logos across the district.¹⁷ The Raumatī Vision Project has given flavour and identity, as well as leadership, to the district as a whole.

With Council taking an interest in the Vision Project, they have taken the concept and adopted it across the district.¹⁸ All Community Boards are now driving engagement on visions for their area, and Council is using the process to develop a district-wide vision. In that sense, the Raumatī Vision Project has pioneered whole new levels and processes for community engagement in Kapiti. It has allowed Council to develop softer and more open means of engaging with the local population, and it has enabled a level of engagement that has otherwise not previously been possible. All of this has come about due to the Raumatī Vision Project, started by two local people who had no idea what they were doing, but who knew they loved the community they were elected to represent.

It's important to understand the true essence of the Raumatī Vision Project. People sometimes view the Vision imagery as a series of wants, thereby missing the heart of the Vision. The purpose of the Vision Project is not merely to create a shopping list of projects that Council should fund, nor is it designed to be manipulated as a political instrument for individuals to engineer self-serving changes. Rather, the intention is to highlight what truly matters to the Raumatī community through the Vision imagery. It showcases our community's identity, and the lifestyle we value. It sets expectations for newcomers about what they can anticipate from the local area, and what they should respect without seeking to change. The Vision Project process is not iterative, but relational. As a long-term vision, it transcends the three-year election cycle, providing the community with a means to guide and inspire politicians as well as hold them to account. The main risk of running the Vision Project through Council, or indeed any large organisation, is that its original deeper purposes may become overshadowed by organisational or other interests, leading to the work becoming just another bureaucratic process that loses touch with the community and its core values. Therefore, it is crucial to maintain the Vision's alignment with community values by prioritising people over process. Doing so ensures that the Project remains rooted in its original purpose and continues to resonate meaningfully within the community.

List of Appendices:

Appendix 1: Full copy of main Vision imagery

¹⁷ See Appendix 4

¹⁸ See the Council led district wide Vision here: <https://haveyoursay.kapiticoast.govt.nz/hub-page/vision-kapiti> and the Council led Raumatī Vision here: <https://haveyoursay.kapiticoast.govt.nz/vision-raumatī>

Appendix 2: Raumati Community Board LTP submission showing use of Vision imagery to support submissions

Appendix 3: Logos developed for Raumati, Raumati South, and Raumati Beach

Appendix 4: Community Board logos developed out of the Raumati logos

Appendix 5: Images showing different forms of the Vision imagery and people engaging with them

Appendix 6: The combined Raumati Vision *in situ* in Raumati South



APPENDIX 2

**KCDC
LONG-TERM PLAN 2024-27**

**Submission on behalf of
Raumati Community Board**



Prepared by:
Bede Laracy
Chair
Raumati Community Board
Bede.Laracy@kapiticoast.govt.nz

INTRODUCTION

The Raumati Community Board (RCB) accepts the position that KCDC is facing currently, namely that the budget is extremely tight and when paired with a high inflation economy there is no appetite for large rates increases and few options for increased spending. We therefore intend to focus largely on existing projects, or projects that have very little impact on the operational budget. The issues we wish to raise are as follows

Raumati Pool Building

The Raumati Pool Building was decommissioned over a decade ago and has since been used for little more than book and dust storage. This neglect has been a shame on our community, and the opportunity cost has been immeasurable. Council currently has two options, either to tear the building down at some cost to the rate payer and in the process tear out the hearts of many locals with it, or repair and improve the building for some future purpose. The RCB submits that the building ought to be repaired and improved.

This year there has been an increase in interest in the building, largely driven by the Our Vision for Raumati project, which highlighted just how important this space is to the Raumati Community.¹ There is a strong desire within the community to breathe life back into the space and enliven the waterfront area to increase amenity and general wellbeing. There is also a long-term tenant in the building with ideas for broader use in the future.

The RCB takes the view that, within the context of tightened economic times, there should be three phases in revitalising the Raumati Pool space as follows:

First – earthquake strengthening

Driven by landlord obligation and community interest, KCDC has now completed a full building assessment which has shown a high level of earthquake risk. Although costings have not been completed, indications are that it will not be expensive to achieve an acceptable standard and any impact on rates is likely to be minimal.

The RCB submits that KCDC, as a matter of prudence and general safety, ought to implement all work necessary to ensure that the building is repaired to a standard that will ensure it meets the earthquake standards for the foreseeable future.

¹ See more on the Our Vision for Raumati project here: www.ourvisionforraumati.nz

Second – repair to a useable standard

Once earthquake strengthening work is completed, community pressure will emerge with a hope for using the space. However, further work will be required such as filling in – or covering over – the old pool area.

There may be significant cost to such work, which risks rates pressure. However, if it can be done at a reasonable cost then it ought to be done. As a community we can then start to use the space until a more permanent idea can come to fruition.

The RCB submits that it would be prudent for KCDC to do a costs calculation to bring the building up to a condition that is usable, and that they explore options with the community of how it might be used in the medium term.

Third – a full building restoration to ensure the use and longevity of the building

As a large building on a key location, the old Raumati Pool is sited perfectly to be used as an asset that can create entertainment, economic activity, and general community wellbeing. There have been a number of ideas suggested, and there may be more that have not emerged. It would therefore be prudent to commence a process to tender for use of the space to ensure the best ideas can come forward.

The final stage of the building work will then be done only once a viable long-term tenant has been secured for the building. The work will then be carried out in partnership with the tenant, and the costs will be recovered through the lease agreement.

Priorities assessment

Improvements on the Raumati Pool Building fulfil 4 of KCDC's Top 10 priorities.²

First, improving and using the building will increase inclusive spaces and create opportunities for local people both for recreational use and community wellbeing. Priority D is satisfied.

Second, if a viable business idea can flourish in the building, then employment opportunities may be enhanced through improved tourism and economic development. Priority E is satisfied.

Third, using the building is a big part of the feedback from the Raumati Vision Project, which will ultimately feed into the Kapiti Vision. Priority I is satisfied.

Fourth, the derelict state of the building has been a shame on our community for a decade. Improving and using the building will therefore enhance mana and pride in KCDC's operational performance. Priority J is satisfied.

² Information on KCDC Top Ten Priorities here: <https://www.kapiticoast.govt.nz/councillors-hub/councillors-top-10-priorities/>

Conclusion

There is overwhelming support for the Raumati Pool Building to be improved. Doing so would enhance local wellbeing, satisfy 4 of the Top 10 Priorities, and it would help KCDC improve its obligations to tenants. Those benefits need to be constrained within the realities of a tightened economy, and it would therefore be prudent to stage the work. The RCB submits that this building ought to have a priority within the Long-Term Plan for 2024 to 2027.



3

Raumati Village

Under the current Long-term Plan, work is budgeted for an upgrade of the Raumati Village town centre from 2026. Within the current economic context and budgetary constraints there is little justification for bringing that forward. However, the intervening time allows for engagement and trials.

There are a number of channels now available for town centres to trial temporary street activations. KCDC could apply for these grants and work with the RCB and the Raumati Vision Project to develop ideas for temporary street activations within Raumati Village. Those projects can then be used to provide feedback for longer term ideas for a town centre upgrade.

In following this strategy, KCDC would be satisfying 5 of the Top 10 Priorities, being D, E, I, J, and K.

The RCB submits that it would be beneficial for KCDC to support cost effective temporary street activations as a way of working towards a bigger town centre plan.



³ All images used with permission of Our Vision for Raumati

Wharemauku Stream

The Wharemauku stream is a key part of the local ecosystem, as well as being an important taonga. The management of the stream over the years has been poor, and it has degraded to a point that is unacceptable. Part of the issue is the cross-department nature of the ownership. However, the Raumati Community Board view ourselves as having a kaitiaki role in the stream and we are keen to see it cleaned, revitalised, and for the banks of the river to be planted.

Restoring the quality of the stream would satisfy 4 of the Top 10 priorities, being A, C, I, and J.

The RCB submits that it is of vital importance to provide resources to help the Raumati Community revitalise the Wharemauku stream.



Raumati Seawall

The Raumati Seawall needs repair. KCDC has been consulting with the community about design and construction, and public meetings have occurred outlining detail of those aspects. There is a huge expectation from the Raumati Community that the planned seawall upgrade will proceed, and the budget to complete the work needs to be confirmed through the Long-Term Plan. Doing so would satisfy or support Top 10 Priorities A, B, and D.

Storm Water work

Likewise with storm water work. There are plans in place to upgrade the storm water infrastructure and it is essential to the community that these works proceed. Funds budgeted for storm water upgrades in Raumati need to stay in place. Doing so satisfies Top 10 Priorities A, B, and D.

Stage/Soundshell – Marine Gardens

An idea that has emerged from the Raumati Vision Project is to have some kind of sound shell or stage in Marine Gardens. It would provide a focus for youth as well as others to express their creativity through music, theatre, dance, etc. It would create a place for people to gather socially and connect, and it would satisfy Top 10 Priorities D and I.

A structure could be built reasonably cheaply and without too much disruption to the surrounding park area. A wooden stage with a simple roof would suffice, and options for having power accessible should be explored. It should also include a consultation for a longer-term plan should the stage prove popular, for example whether a permanent mini-amphitheatre should be constructed.

The RCB submit that a stage or soundshell structure be funded under the 2024 to 2027 Long-Term Plan.



Community Board Funding Pool

The level of funding for the Discretionary Fund has remained steady across Community Boards for many years. It is time to address the levels to check if they are still relevant.

The Initiatives Fund was implemented through Community Boards to help fund local ideas that could not be supported through the Discretionary Fund. The RCB had the Initiatives Fund for one cycle, and in that cycle there was a clear need for that type of funding. The fund was oversubscribed and put to very good use in the local community.

The RCB submits that it would be timely to test the level of the Discretionary Fund, and reintroduce the Initiatives Fund in order to support our local community.

APPENDIX 3



APPENDIX 4

RAUMATI LOGO EXPANDED V1



RAUMATI LOGO EXPANDED V2



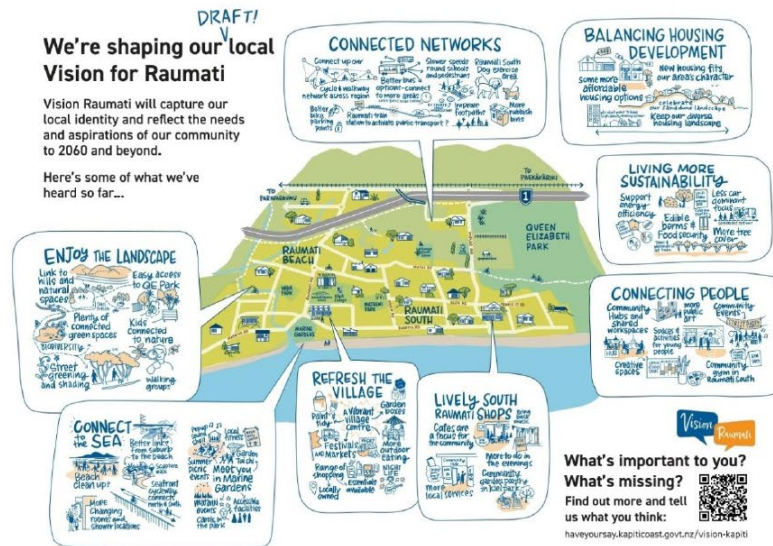
APPENDIX 5







APPENDIX 6



Submitter Number: 609

Full Name: Evan Frew

Organisation:

Property Location: Malvern

Wish to speak to the submission: Yes

Representation Review 2024

Initial Proposal Submission Form

Selwyn District Council is conducting a representation review to determine how the communities that make up the Waikirikiri Selwyn district should be represented in our coming elections.

Please read the consultation document and information available online at www.selwyn.govt.nz/repreview before completing and dropping off this form at a Council Library and Service Centre by 5pm on Thursday 12 September.

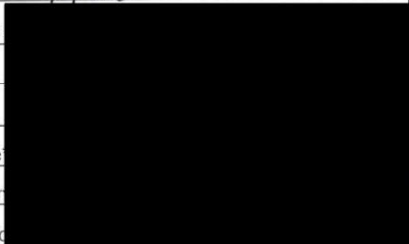
You can make a submission using this form, or by completing the online submission form at selwyn.govt.nz/repreview.

Submitter details

Please note: all fields marked with an asterisk (*) are compulsory. These details will be used for the purpose of contacting you about this consultation.

First name* Kvan

Last name* Frew

Address* 

Town*

Postcode

Contact number

Email address

Are you submitting on behalf of an organisation?*

☐ Yes ☒ No

If yes, please state the name of the organisation*

Do you wish to attend a hearing to present your submission in person?*

☒ Yes ☐ No

If yes, someone will be in contact with you to arrange the date and time.

Which electoral ward do you live in or own property in?*

☐ Ellesmere ☒ Malvern

☐ Rolleston ☐ Springs

☐ I don't live in or own property in these wards

If you need extra space for your submission, use additional paper and attach it to this form. Please include your name on the additional paper.

Anyone can make a submission. Submissions will only be used for the purpose of this consultation process. All submissions will be considered by Council before making a decision.

Privacy statement

Submissions are part of the public consultation process, and are a public record. Submissions will be made publicly available on the Council website and in official documents. We will remove any contact details.

Questions

1. Do you support the initial proposal to change the ward boundaries and the number of councillors (four wards, eight councillors) for local elections?

☐ Yes ☒ No

Please add your comments

I consider that the reduction from 10 council member to 8, a back word step especially that the former size of our local area requires more than 1 councillor to effectively represent the people

2. Do you support the initial proposal to have no community boards? This would mean that the Malvern Community Board would be disestablished.

☐ Yes ☒ No

Please add your comments

The area of Malvern has had a long good service from the MCB. It is more now important to give it responsibilities & a chance to address local issues that a councillor will not have time to address.

3. Do you support the name suggestions for the four local electoral wards from Malvern; Rolleston; Ellesmere; and Springs to Tawera Malvern Ward; Kā Mānia Rolleston Ward; Te Waihora Ellesmere Ward; and Kā Puna Springs Ward?

☐ Yes ☒ No

Please add your comments

Why do we need to have every word with a Maori name & as such listed first
I would have thought that Rolleston would have been OK.

4. Do you have any other comments about our initial proposal for our representation arrangements?

I am concerned how much the concentration of decision making will be done by such a small number of Councillors.

The retention of the Malvern Community Board is essential for such a large land area with many different communities to ensure that local issues are addressed.

One Councillor for Malvern is just a token gesture by Council to claim that it is doing local governance satisfying outcomes. It is the death of local democracy.

Return this submission form by:

- Dropping it off at one of our Representation Review stands or with our Customer Service Teams at:
 - Council Rolleston Offices 2 Norman Kirk Drive, Rolleston
 - Te Ara Ātea 56 Tennyson Street, Rolleston
 - Darfield Library 1 South Terrace, Darfield
 - Leeston Library 19 Messines Street, Leeston
 - Lincoln Library 22 Gerald Street, Lincoln
- Posting it to:
 - Freepost 104 653
PO Box 90
Rolleston 7643

All posted submissions must be received by Council by 5pm, 12 September 2024. Please allow time for your submission to be delivered by this deadline.

- Scanning and emailing it to repreview@selwyn.govt.nz

**Representation
Review 2024**

 **Selwyn**
DISTRICT COUNCIL

Submitter Number: 325

Full Name: Basil and Trudi Meyer

Organisation:

Property Location: Ellesmere

Wish to speak to the submission: Yes

Do you support the initial proposal to change the ward boundaries and the number of councillors (four wards, eight councillors) for local elections?

No

Please add your comments

No changes to the status quo!

Do you support the initial proposal to have no community boards? This would mean that the Malvern Community Board would be disestablished.

No

Please add your comments

Keep the Community Board. It is a vital voice for us rate payers!

Do you support the name suggestions for the four local electoral wards?

No

Please add your comments

Name changes are not needed! Focus on the essential things

Do you have any other comments about our initial proposal for our representation arrangements?

Council wards have to represent communities of interest!

We rural rate payers need AT LEAST 2 councillors per ward to represent us, considering the immense areas of rural wards and the numerous issues concerning us.

Selwyn District is not only Rolleston or Lincoln.

Rural rate payers want and deserve fair and equitable services for our significant contributions to the district's Rate-Take!

If you want to reduce councillors why don't you reduce 1 each from Rolleston and Springs?

Submitter Number: 266

Full Name: Charlie Draper

Organisation:

Property Location: Malvern

Wish to speak to the submission: Yes

Representation Review 2024

Initial Proposal Submission Form

Selwyn District Council is conducting a representation review to determine how the communities that make up the Waikirikiri Selwyn district should be represented in our coming elections.

Please read the consultation document and information available online at

www.selwyn.govt.nz/repreview before completing and dropping off this form at a Council Library and Service Centre by 5pm on Thursday 12 September.

You can make a submission using this form, or by completing the online submission form at selwyn.govt.nz/repreview.

Submitter details

Please note: all fields marked with an asterisk (*) are compulsory. These details will be used for the purpose of contacting you about this consultation.

First name* CHARLIE

Last name* DRAPER

Address

Town*

Postcode

Contact

Email address

Are you submitting on behalf of an organisation?*

☐ Yes ☒ No

If yes, please state the name of the organisation*

Do you wish to attend a hearing to present your submission in person?*

☒ Yes ☐ No

If yes, someone will be in contact with you to arrange the date and time.

Which electoral ward do you live in or own property in?*

☐ Ellesmere ☒ Malvern

☐ Rolleston ☐ Springs

☐ I don't live in or own property in these wards

If you need extra space for your submission, use additional paper and attach it to this form. Please include your name on the additional paper.

Anyone can make a submission. Submissions will only be used for the purpose of this consultation process. All submissions will be considered by Council before making a decision.

Privacy statement

Submissions are part of the public consultation process, and are a public record. Submissions will be made publicly available on the Council website and in official documents. We will remove any contact details.

Questions

1. Do you support the initial proposal to change the ward boundaries and the number of councillors (four wards, eight councillors) for local elections?

☐ Yes ☒ No

Please add your comments

Too much work load for one person in such a big area

2. Do you support the initial proposal to have no community boards? This would mean that the Malvern Community Board would be disestablished.

☐ Yes ☒ No

Please add your comments

3. Do you support the name suggestions for the four local electoral wards from Malvern; Rolleston; Ellesmere; and Springs to Tawera Malvern Ward; Kā Mānia Rolleston Ward; Te Waihora Ellesmere Ward; and Kā Puna Springs Ward?

☐ Yes ☒ No

Please add your comments

English names should be first

4. Do you have any other comments about our initial proposal for our representation arrangements?

Return this submission form by:

- Dropping it off at one of our Representation Review stands or with our Customer Service Teams at:
 - Council Rolleston Offices 2 Norman Kirk Drive, Rolleston
 - Te Ara Ātea 56 Tennyson Street, Rolleston
 - Darfield Library 1 South Terrace, Darfield
 - Leeston Library 19 Messines Street, Leeston
 - Lincoln Library 22 Gerald Street, Lincoln
- Posting it to:
 - Freepost 104 653
PO Box 90
Rolleston 7643

All posted submissions must be received by Council by 5pm, 12 September 2024. Please allow time for your submission to be delivered by this deadline.

- Scanning and emailing it to repreview@selwyn.govt.nz

**Representation
Review 2024**



Submitter Number: 175

Full Name: Gareth Payne

Organisation:

Property Location: Malvern

Wish to speak to the submission: Yes

Representation Review 2024

Initial Proposal Submission Form

Selwyn District Council is conducting a representation review to determine how the communities that make up the Waikirikiri Selwyn district should be represented in our coming elections.

Please read the consultation document and information available online at www.selwyn.govt.nz/repreview before completing and dropping off this form at a Council Library and Service Centre by 5pm on Thursday 12 September.

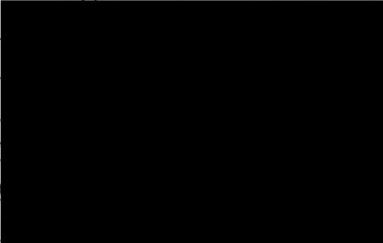
You can make a submission using this form, or by completing the online submission form at selwyn.govt.nz/repreview.

Submitter details

Please note: all fields marked with an asterisk (*) are compulsory. These details will be used for the purpose of contacting you about this consultation.

First name* Gareth

Last name* Payne

Address* 

Town*

Postcode*

Contact number*

Email address*

Are you submitting on behalf of an organisation?*

☐ Yes ☒ No

If yes, please state the name of the organisation*

Do you wish to attend a hearing to present your submission in person?*

☒ Yes ☐ No

If yes, someone will be in contact with you to arrange the date and time.

Which electoral ward do you live in or own property in?*

☐ Ellesmere ☒ Malvern

☐ Rolleston ☐ Springs

☐ I don't live in or own property in these wards

If you need extra space for your submission, use additional paper and attach it to this form. Please include your name on the additional paper.

Anyone can make a submission. Submissions will only be used for the purpose of this consultation process. All submissions will be considered by Council before making a decision.

Privacy statement

Submissions are part of the public consultation process, and are a public record. Submissions will be made publicly available on the Council website and in official documents. We will remove any contact details.

Questions

1. Do you support the initial proposal to change the ward boundaries and the number of councillors (four wards, eight councillors) for local elections?

☐ Yes ☒ No

Please add your comments

- We should retain 10 Councillors & pay them less. Higher salaries will not attract quality people. Councillors should be motivated by service, not pay packet. - Goes against "Communities of Interest," fractures Rural community.

2. Do you support the initial proposal to have no community boards? This would mean that the Malvern Community Board would be disestablished.

☐ Yes ☒ No

Please add your comments

- Will reduce representation of rural people who pay majority of rates in SOC - no taxation without representation. - Urbanites will vote to tax rural communities.

Doofield 30/8/24

175

3. Do you support the name suggestions for the four local electoral wards from Malvern; Rolleston; Ellesmere; and Springs to Tawera Malvern Ward; Kā Mānia Rolleston Ward; Te Waihora Ellesmere Ward; and Kā Puna Springs Ward?

☐ Yes ☒ No

Please add your comments

- SOC is wasting rate payers money on this - stick to critical infrastructure.
- You have no popular mandate to make name changes.

4. Do you have any other comments about our initial proposal for our representation arrangements?

- very poor community consultation many people unaware of this review or its implications to rural representation.
- Should not be arbitrarily changing district boundaries to hit "target pop numbers", this fragments communities & goes against principal of "communities of interest"
- Goes against principal of no taxation without representation.
- Rural representation should be increased due to dispersed population.
- Community Assets need to be delegated back to local communities & community boards.
- Funding, control & power is becoming too centralised need to decentralise & get back to community level decision making.
- Reducing councilors to increase salaries will not attract community minded candidates. It will attract those motivated by money the type of people who should not be running communities.

Return this submission form by:

- Dropping it off at one of our Representation Review stands or with our Customer Service Teams at:
 - Council Rolleston Offices 2 Norman Kirk Drive, Rolleston
 - Te Ara Ātea 56 Tennyson Street, Rolleston
 - Darfield Library 1 South Terrace, Darfield
 - Leeston Library 19 Messines Street, Leeston
 - Lincoln Library 22 Gerald Street, Lincoln
- Posting it to:
 - Freepost 104 653
 - PO Box 90
 - Rolleston 7643

All posted submissions must be received by Council by 5pm, 12 September, 2024. Please allow time for your submission to be delivered by this deadline.

- Scanning and emailing it to repreview@selwyn.govt.nz

**Representation
Review 2024**



Submitter Number: 469

Full Name: [REDACTED]

Organisation:

Property Location: Malvern

Wish to speak to the submission: Yes

Do you support the initial proposal to change the ward boundaries and the number of councillors (four wards, eight councillors) for local elections?

No

Please add your comments

Ward boundaries are supposed to be determined by communities of interest - changing them just to meet the population rule is completely disregarding the communities - surely it is more important to put the people first - after all ,you, the council , are elected by the people to SERVE the people .

The reasons given for reducing the number of councillors - "more effective decision making and increased remuneration" - is pathetic and distinctly immoral . If the councillors really take their job seriously , they will work as a team , and honestly represent their community . I have been shocked when attending council meetings, to see big absences and great boredom and indifference shown by many of the councillors who have bothered to attend . This does not inspire confidence in the quality of people who have been elected . Increasing their remuneration is just plain GREEDY - Their role is one of PUBLIC SERVICE !

Do you support the initial proposal to have no community boards? This would mean that the Malvern Community Board would be disestablished.

No

Please add your comments

Absolutely NOT !! Community boards are the link between communities and the council, elected to look after local interests. They give the community a voice in decisions affecting them. The Malvern Community Board MUST stay in existence - for effective

communication between residents and the council, which would then make for fair and democratic representation - surely what the council wants ??

Dis-establishing the Malvern Community Board also puts way TOO much power into the Council's hands - this is the slippery path to dictatorship and tyranny ! Surely NOT what the council wants to represent and become ?

Do you support the name suggestions for the four local electoral wards?

No

Please add your comments

Given that English is the language spoken by the vast majority of Selwyn residents , English should and MUST be the first language on signage and in names . Ward names should stay the same , or if the council insists on pandering to Maori influence , put the Maori name second - Malvern Tawera.

Do you have any other comments about our initial proposal for our representation arrangements?

I understand about the population rule , but slavishly following it COMPLETELY disregards the reality of the huge and beautiful land that is Selwyn. Is it fair to expect one councillor to travel an average of 20,000kms a year to meet and talk with the widely scattered residents in an area of about 5000m2km ? The clear answer is NO to all right thinking , democracy- loving people ! We need to, and must keep the two councillors for the Malvern Ward.

It is also quite unethical to consider reducing the number of councillors and for the remaining councillors to pocket those so-called "savings" ! Where are the morals and the concept of public service ??

I completely disagree with this regular changing of ward boundaries !! Burnham and West Melton are both largely rural , with minimal services - moving them into more urban wards is likely to increase rates , with NO extra services - where is the integrity here ?

In summary, the Selwyn Council has developed a reputation for greed, for exploding staff numbers and for disregarding the wishes of the communities it represents - it is a good thing we have elections coming up !!

Submitter Number: 541

Full Name: Trevor Taege

Organisation:

Property Location: Malvern

Wish to speak to the submission: Yes

Representation Review 2024

Initial Proposal Submission Form

Darfield 11/9/24 541 541

Selwyn District Council is conducting a representation review to determine how the communities that make up the Waikirikiriri Selwyn district should be represented in our coming elections.

Please read the consultation document and information available online at www.selwyn.govt.nz/repreview before completing and dropping off this form at a Council Library and Service Centre by 5pm on Thursday 12 September.

You can make a submission using this form, or by completing the online submission form at selwyn.govt.nz/repreview.

Submitter details

Please note: all fields marked with an asterisk (*) are compulsory. These details will be used for the purpose of contacting you about this consultation.

First name* Trevor Taege

Last name* Taege

Address

Town*

Postcode

Contact

Email

Are you submitting on behalf of an organisation?*

☐ Yes ☒ No

If yes, please state the name of the organisation*

Do you wish to attend a hearing to present your submission in person?*

☒ Yes ☐ No

If yes, someone will be in contact with you to arrange the date and time.

Which electoral ward do you live in or own property in?*

☐ Ellesmere ☒ Malvern

☐ Rolleston ☐ Springs

☐ I don't live in or own property in these wards

If you need extra space for your submission, use additional paper and attach it to this form. Please include your name on the additional paper.

Anyone can make a submission. Submissions will only be used for the purpose of this consultation process. All submissions will be considered by Council before making a decision.

Privacy statement

Submissions are part of the public consultation process, and are a public record. Submissions will be made publicly available on the Council website and in official documents. We will remove any contact details.

Questions

1. Do you support the initial proposal to change the ward boundaries and the number of councillors (four wards, eight councillors) for local elections?

☐ Yes ☒ No I oppose this initial Proposal

Please add your comments

Malvern is 70% of the SDC land area
It is 5,000 Square Kilms. Malvern supports
14 Communities. Malvern rate payers
pay \$15.29 pp in rates The Malvern
Ward must retain two Councillors
Because of the Huge area.

2. Do you support the initial proposal to have no community boards? This would mean that the Malvern Community Board would be disestablished.

☐ Yes ☒ No I oppose this initial proposal

Please add your comments

With the Malvern Wards huge area
It's absolutely necessary to have
grassroots information directed
back to the Council meetings.
Malvern has a huge amount of bridges
culverts, Shingle roads and sealed
Roads.

3. Do you support the name suggestions for the four local electoral wards from Malvern; Rolleston; Ellesmere; and Springs to Tawera Malvern Ward; Kā Mānia Rolleston Ward; Te Waihora Ellesmere Ward; and Kā Puna Springs Ward?

☐ Yes ☒ No

I oppose having 2 names for all wards

Please add your comments

*Malvern
It's important that must retain it's Identity We don't want any Moari Names.*

Please find many Malvern Names attached.

4. Do you have any other comments about our initial proposal for our representation arrangements?

We have been blocked from getting information about How many bridges and culverts. How many Kms of Sealed Roads and Shingle Roads are in the Malvern Ward.

Where is the Transparency and honesty.

This Council Corrupt as I have found many times before.

Return this submission form by:

- Dropping it off at one of our Representation Review stands or with our Customer Service Teams at:
 - Council Rolleston Offices 2 Norman Kirk Drive, Rolleston
 - Te Ara Ātea 56 Tennyson Street, Rolleston
 - Darfield Library 1 South Terrace, Darfield
 - Leeston Library 19 Messines Street, Leeston
 - Lincoln Library 22 Gerald Street, Lincoln
- Posting it to:
 - Freepost 104 653
PO Box 90
Rolleston 7643

All posted submissions must be received by Council by 5pm, 12 September 2024. Please allow time for your submission to be delivered by this deadline.

- Scanning and emailing it to repreview@selwyn.govt.nz

**Representation
Review 2024**



S D C Ward Submission

Malvern Lions
Malvern News
Malvern waste solutions
Malvern squash club
Malvern mowing
Malvern indoor cricket
Malvern home kill services
Malvern glass
Malvern computers
Malvern contracting
Malvern butchery
Malvern home nursing
Malvern bins
Malvern A & P assn.
Malvern anglican parish
Malvern hills water supply
Malvern farmers vet club
Malvern hills road
Malvern air conditioning & electrical Ltd
Malvern collie club
Malvern Ward

Do you think that all these businesses will be happy with the cost of a name change ??? at huge expense . Some of these will be a further cost on the rate payer!!!!!!!!!!

Submitter Number: 445

Full Name: Nikki Chippendale

Organisation:

Property Location: Springs

Wish to speak to the submission: Yes

Do you support the initial proposal to change the ward boundaries and the number of councillors (four wards, eight councillors) for local elections?

No

Please add your comments

Do you support the initial proposal to have no community boards? This would mean that the Malvern Community Board would be disestablished.

No

Please add your comments

Do you support the name suggestions for the four local electoral wards?

No

Please add your comments

Submitter Number: 446

Full Name: Bruce Davey

Organisation: Arthur's Pass Association

Property Location: Malvern

Wish to speak to the submission: Yes

Do you support the initial proposal to change the ward boundaries and the number of councillors (four wards, eight councillors) for local elections?

No

Please add your comments

The Arthur's Pass Association (APA) does not agree with the proposed changes to representation in the SDC.

The current Malvern ward encompasses 14 communities from Arthur's Pass to Hororata to West Melton. In the current situation those 14 different communities have good engagement with the elected councillors who make the time to physically attend significant community events. The association feels that voice of people in the proposed representation structure will be significantly weakened, to the extent of being under represented, due to unique factors of this ward. The Malvern ward encompasses one of the largest geographical ward areas in New Zealand at approximately 5000km² spanning from Arthur's Pass in the west almost to State Highway 1 in the east – a road distance of approximately 140km and a trip time approaching 2 hours. The 14 communities have differing needs – for example the priority issues and community needs of Arthur's Pass being on a main highway, in a National Park and alpine environment, and with a sizeable number of daily visitors differ from rural townships on the plains. To stay in touch with those communities we understand that the two current councillors in this ward travel approximately 20,000 km each year.

The APA considers that the proposed reorganisation of SDC representation where there would be single councillor for the Tawera Malvern ward would lead to significant increases of stresses placed on a single councillor to represent all the communities in such a geographically dispersed region.

The APA strongly supports the 4 ward, 9 councillor representation model that has been previously presented to council, which would have West Melton stay in the Tawera Malvern ward, with the ward boundary extended slightly south-eastward to SH1 (which makes sense given the catchment for schooling), and for Tawera Malvern to be represented by 2

councillors. Although in terms of absolute population numbers this may appear to provide over representation to Tawera Malvern, having two councillors would allow those councillors to have appropriate contact with the far flung communities in the ward.

Video conferencing is no substitute for regular in person contact with elected representatives. Communications dropouts and low quality calls do not provide nearly the same level of interaction. (As an aside, even if video conferencing would be appropriate, the SDC does not provide internet anywhere in Arthur's Pass – including the Arthur's Pass community centre so meetings cannot be held in the most logical location for them.)

The 4 ward, 9 councillor option presented to the SDC would provide more equitable representation. Although the Malvern would grow slightly in land area, this would be more than offset by the extra council representative.

Do you support the initial proposal to have no community boards? This would mean that the Malvern Community Board would be disestablished.

No

Please add your comments

The APA does not agree with the proposal to disestablish the Malvern community board, particularly if the elected representation is reduced to one councillor as is the current proposal. As noted in the previous question the Tawera Malvern ward is a huge geographical area and the Community Board provides a mechanism for the views of the various communities to be gathered and shared with council.

Do you support the name suggestions for the four local electoral wards?

Yes

Please add your comments

The APA is very supportive of recognizing the pre-European history of the region in the name of the ward currently known as Malvern. The APA supports either "Tawera" or "Tawera Malvern" as a new name for the ward.