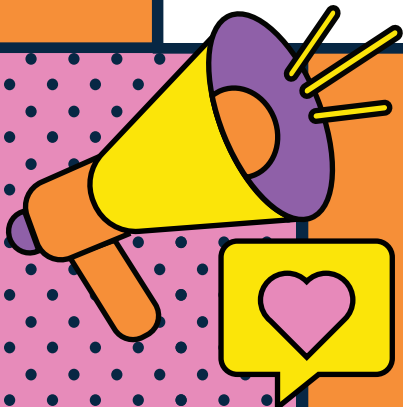




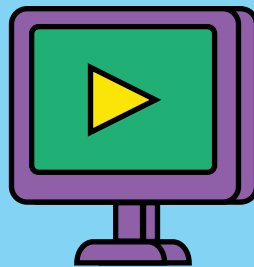
Kirwee Workshop

(Rural Focus)



10 February 2025

Waikirikiri Ki Tua
Future Selwyn



MY
FUTURE
TOWN

World Café Responses

Kirwee Workshop (rural focus) 10 February 2025

Key Questions

What are your top three things for improving your town?

Community Responses

- Water improvements – quality, remove fluoride, chlorine and reduce nitrates
- Flooding and river management including kerb and channel improvements
- More community assets such as playgrounds and community gardens
- Tree planting

How can transport and access be improved to meet future needs?

- Public transport – improved bus services (including school service) and MyWay (on-demand service like Timaru) or minivan
- Community Vehicle Trust – expand current service
- Road safety – intersection upgrades (such as Kirwee), rumble strips, passing lanes, icy road prevention (shelterbelts), and footpath improvements and wider width (including smaller towns)
- Speed reductions (Kirwee, Sheffield) and better signage
- Increase road width in new subdivisions and rural roads (for trucks, milk tankers and tractors)
- More roads sealed (such as Hoskyns Road)
- Expanded EV charging
- Utilise the railway (rail-tram and commuter service)
- Mixed feelings about bike lanes

What do you like about living here and what don't you want to see changed for future generations?

- Sense of community and spirit (but need more engagement)
- Small town feel – quiet, limit migration, growth concerns
- Proximity to Christchurch (Darfield as a dormitory)
- Rural environment – rural amenity, fields and open spaces, McHughs, Dark Sky with no light pollution
- Highly productive land
- Valuation and rating system needs improvement (needs to be appropriate to rural and urban areas)
- Development contributions need improvement (a tool to manage growth)

How can housing be improved to meet future needs?

- Initiatives for improved housing quality and efficiency (new materials, heating/cooling, insulation, glazing, healthy homes, solar and rain tanks)
- Ability to age in place – variety of houses for different life stages
- Retirement village for the Malvern Area
- Community housing (work with Ōtautahi Community Housing Trust)
- Mixed housing types including accessible – revisit granny flat rules
- Lifestyle block considerations – fire and revisit subdivision rules, educate new residents in these properties to manage expectations
- Manage growth – growth paying for growth, more than just 600 sqm sections, parking provision, developers' social responsibility, reduce covenants (to suit community and not developer)
- Risk management/resilience – flooding, earthquakes and extreme weather, compulsory insurance

What do you see as the role of the rural area surrounding your town, and how do you think this could change in the future?

- Green belt – transition and buffer zone, green lungs, amenity and spaces to recreate and connect
- Rural land as primary production – places of employment
Agricultural land – consider changing practices
- Highly productive land – a place of agriculture, biodiversity
- Tree planting – proactive and in berms
- Reserve sensitivity concerns (mushroom example in Prebbleton)
- More development?
- Navigate pollution impacts
- Larger section sizes further out from towns, with bigger sites as buffers
- Navigate politics and government influence

How can the natural environment be integrated into our towns (e.g. public open spaces, reserves, wetlands, trees and protected areas)?

- Tree planting – incentives, rural restoration, reserve contributions, planting of empty spaces, hedges as wind breaks
 - Riparian planting – walkways and corridors
 - Use green spaces more – reserves and dog walking, multi-use spaces rather than generic
 - More onus on developers – new subdivisions have green spaces and reserves
 - McHughs Forest
 - Utilising water races that are being closed – naturalising and wetlands
 - Maintain remnant biodiversity and natives
-