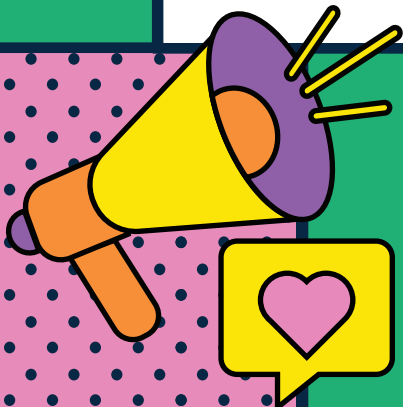


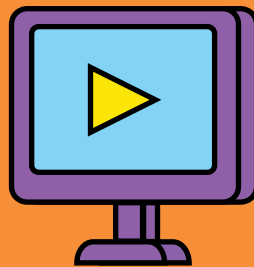


# Leeston Workshop



28 January 2025

Waikirikiri Ki Tua  
Future Selwyn



MY  
FUTURE  
TOWN

# World Café Responses

Leeston Workshop 28 January 2025

## Key Questions

**What are your top three things for improving your town?**

## Community Responses

- Council to facilitate community groups
- Public transport within townships and connecting Selwyn to Christchurch
- Should be appropriate for each town, accommodating community values and needs
- Improved housing options: more variation to support different needs, smaller housing close to town centres
- Keeping industrial areas and their growth relevant to communities, avoiding an ad hoc situation
- Schooling and medical care to support growth: public transport, amenities
- Town plans: future planning specific to towns will help streamline growth and infrastructure needs and will help preserve local values and rural town atmosphere

**How can transport and access be improved to meet future needs?**

- Road widening to accommodate farming equipment
- Safer cycleways
- Better linkages between towns
- Ride Share/MyRide/Transport on demand
- Currently too car-reliant
- Trade-off: need transport to meet needs for growth, but many members of the community don't want too much growth

**What do you like about living here and what don't you want to see changed for future generations?**

- Rural feel/lifestyle/community
- Open spaces
- Community groups
- Not too far, access to environments, amenities and Christchurch
- Good schools
- Low-density housing
- Good facilities
- Celebrating heritage
- Medical/hospital facilities

**How can housing be improved to meet future needs?**

- Mixed housing types – cater for younger home buyers and for the elderly by having smaller, more manageable sections
- Affordability – mixed housing may improve affordability
- Consenting processes are too difficult and rigid – can't be innovative with building materials
- Energy-efficient housing: rainwater tanks, solar
- More thought into planned housing, based on town masterplans and including better subdivision development to reduce parking issues

---

**What do you see as the role of the rural area surrounding your town, and how do you think this could change in the future?**

- Buffer between towns and rural areas – reverse sensitivity considerations
  - Role of rural area to towns: food, amenities, recreation, jobs/ economic contribution
  - Lifestyle properties – rural residential
  - Leeston a rural town, not another Rolleston – retain rural feel
  - Rural towns as rural towns
-