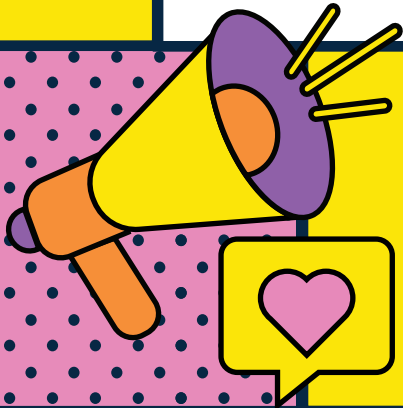


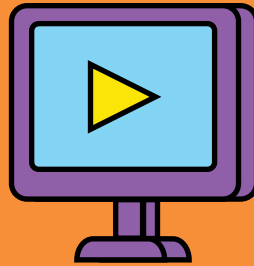


Lincoln Workshop 01



4 February 2025

Waikirikiri Ki Tua
Future Selwyn



MY
FUTURE
TOWN

World Café Responses

Lincoln Workshop 1 04 February 2025

Key Questions

Community Responses

How can transport and access be improved to meet future needs?

- Dedicated ring roads for trucks/services
- Fewer cars in town centres, even small towns experiencing congestion
- Public transport access in towns and between towns
- On-demand public transport
- Wider footpaths – clear and safe
- Cycling – clear and safe
- Subdivision of living streets

What do you like about living here and what don't you want to see changed for future generations?

- Green belt, open spaces and semi-rural feel, keep the town's identity
- Housing – larger sections to maintain the rural vibe, mixed housing types and shops spread out
- Safety – infrastructure must match growth and be in place before development
- Public transport – develop near town centre, not everywhere
- Public transport for the elderly – consider stop frequency and trip duration

How can housing be improved to meet future needs?

- Avoid housing on productive rural land and limit urban sprawl
- Promote a mixture of housing types supported by community facilities
- Improve resilience from climate change and natural hazards by avoiding housing in inappropriate locations
- Correct the imbalance between central government and local authority control of housing
- Protect local character

What do you see as the role of the rural area surrounding your town and how do you think this could change in the future?

- Green belts/buffers
- Lifestyle blocks
- Keep and protect
- Recreation – dogs
- Wetlands – biodiversity
- Farming – respect
- Soil qualities
- Utilise productive land
- Central developments
- Prebbleton ring road

How can the natural environment be integrated into our towns (e.g. public open spaces, reserves, wetlands, trees and protected areas)?

- New subdivisions need to have a balance of blue-green areas and housing
 - Protect natural areas; if need to develop around the natural areas, retain and improve the natural areas
 - Integrate natural areas
 - Green belts/stepping stones
 - Tree canopy/mixed?
-