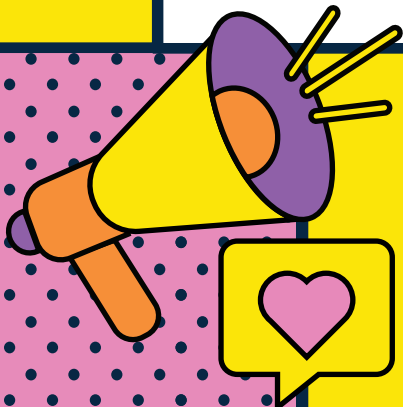


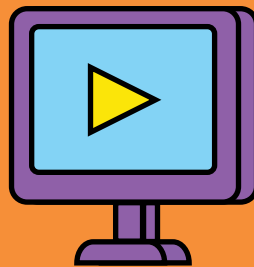


# Lincoln Workshop 02



10 February 2025

Waikirikiri Ki Tua  
Future Selwyn



MY  
FUTURE  
TOWN

# World Café Responses

---

Lincoln Workshop 2 10 February 2025

---

## Key Questions

**What are your  
top three things  
for improving  
your town?**

## Community Responses

- Lack of facilities in Prebbleton
  - Access traffic issues
  - No public transport
  - Improve student accommodation
  - Enhance and retain rural/character/heritage feel
  - More health and educational facilities
  - Leverage relationships with university and agriculture
  - Retain university town feel
  - More parking
  - Lack of educational facilities
  - Not much for youth to do
  - Focused, managed intensification while maintaining heritage values
  - Develop town centre
  - Bike lane
  - Improve traffic safety within Lincoln
  - Get rid of heavy vehicles
  - More variety in housing types
  - Maintain community feel
  - Maintain green belt
  - Slow greenfield development
  - Lack of community facilities
  - All-weather markets in Prebbleton
-

---

## How can transport and access be improved to meet future needs?

- Roads for specific purposes with specific dimensions
- Better connections to Christchurch for all transport types: separated space, dedicated and expanded
- Active connection between towns
- Freight and trucks managed better – bypass? protect farms
- Charging opportunities and transition to EV and beyond, including Park'nRide
- Public transport is improved, direct and easy (supporting density)
- Connections to community facilities – multiple types (if all in Rolleston)
- Safety of key connections and intersections
- Less reason to leave your town
- Prebbleton is not a through road; town centre is a destination
- Improve crossing in Prebbleton
- Prebbleton – Kakaha Park bus stop
- Lincoln town centre – for cycling and walking
- Shift parking in Lincoln town centre

---

## What do you like about living here and what don't you want to see changed for future generations?

- Identity – community spirit and connections
- Identity – village feel, rural small town
- Identity – university and research
- Identity – not another Rolleston
- Identity – history
- Biodiversity – tree canopy, Liffey, wetlands, rural and soils
- Lifestyle – safe, good schools, recreation, all ages, employment, liveability, good for families)

---

## How can housing be improved to meet future needs?

- Energy efficiency, including colour of roofs – heat island effect
  - Intensive housing in the right places – not on good soils, blocking sunlight, in historical precincts or where it interferes with village character or high-water table
  - Townhouses and low apartment blocks – if there are new commercial builds along Gerald Street, have residential flats above
  - Trees and green space
  - Affordable housing
  - Supported housing
  - Urban limits and green belts – farmers need to be able to keep farming
  - Better permeable vs impermeable ratio
  - Carpark? Developers to pay their true cost, not imbalanced or spilling onto existing ratepayers
-

---

**What do you see as the role of the rural area surrounding your town and how do you think this could change in the future?**

- Council should celebrate the history of the town – welcome sign
- Diversity of the town is important and values tied to the university
- The university and agricultural research relies on the rural land and needs to be protected
- Support for hard-lined green belt to protect the land
- Lincoln rural land is critical for identity – where we have come from, but we're losing it a bit
- Need to protect and uplift the rural community but also link them into the town community

---

**What types of businesses, industries or jobs would best support Lincoln and wider Selwyn's growing economy?**

- Agri-tech research – Lincoln University and CRIs
  - Leverage unique historical character
  - Technology and innovation
  - Industrial to stay in Rolleston
  - Scale-appropriate
  - Good transport for roads and rail
  - Zoning (industrial and quarries)
  - Live and work connection
  - Housing for industrial
  - Self-reliance – solar, eco-conscious
-