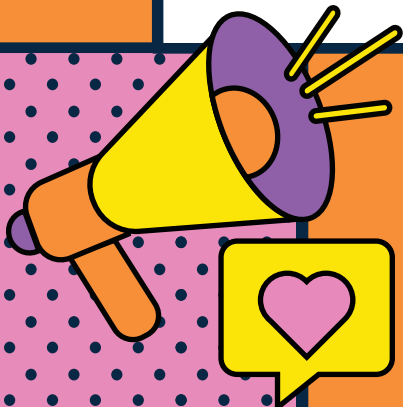




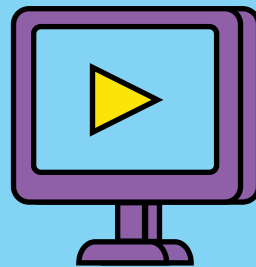
West Melton

Workshop with Malvern Community Board



27 January 2025

Waikirikiri Ki Tua
Future Selwyn



MY
FUTURE
TOWN

World Café Responses

West Melton (with Malvern Community Board) 27 January 2025

Key Questions

What are your top three things for improving your town?

Community Responses

- Planning and protection for the good things in towns
- Greater communication between Council and towns
 - allowing submissions
- Focused planning: transport between towns; accessibility to medical centres and doctors
- Green spaces
- Rural town atmosphere: growth that considers town appeal; transport around towns not through them
- Cycleways
- Schooling: buses to cater to schoolchildren, pickup spots safer for children – lighting and crossings
- Schooling services developed: they are all at capacity

How can transport and access be improved to meet future needs?

- Car-based, poor public transport provision: need higher frequency
- Linkages between towns are essential for education, health, jobs and facilities
- Safety: intersection improvements, crossings, footpaths, schools
- Cycle lane network needed for those who can't drive such as young and elderly; be strategic about where placed
- Cost
- Connector roads are not wide enough – all roads and new subdivisions not designed for current traffic volume
- Investigate rail options – commuter and light rail with Rolleston as the hub
- Future transport – EVs, self-driving cars and Lime scooters

What do you like about living here and what don't you want to see changed for future generations?

- Community feel in smaller townships
- Connecting to the side-by-side townships
- Collaborate and engage with Council – using Council resources and funding
- Infrastructure and network option
- Keeping the smaller townships small: connectivity; retaining heritage
- Keep rural atmosphere
- Getting the zoning right – condensing in developed areas and places
- Keep farmland protected; retain productive land

How can housing be improved to meet future needs?

- The swimming centre
- How many people?
- Heritage
- Plan modelling
- Mobile/internet
- Infrastructure: water, sewerage, roads (lighting), rubbish, doctors, communications, transport, retail
- Affordability
- Mixed developments
- Smaller sections (range of housing)
- First-time home buyers
- Ageing in place
- Communications for new development
- Building consents: cost/speed; less red tape, stay in communication
- Range of housing
- Demographics – rent!
- Young families
- Ageing
- Social housing and food banks
- Well-planned green/open spaces
- Community gardens
- Not on productive land
- Good use of land
- Planned, not haphazard

What do you see as the role of the rural area surrounding your town and how do you think this could change in the future?

- Don't change it
 - Land use – protecting productive land; food and fibre
 - Protect rural amenity
 - We need a service town
 - Buffer around townships to protect rural productivity
 - Rural area: history, heritage and identity
 - Appropriate facilities in rural towns
 - Interconnectivity between towns
 - “Escape” city life
 - Appropriate public land development – “reserve space”
 - Keeping rates affordable is a priority
-