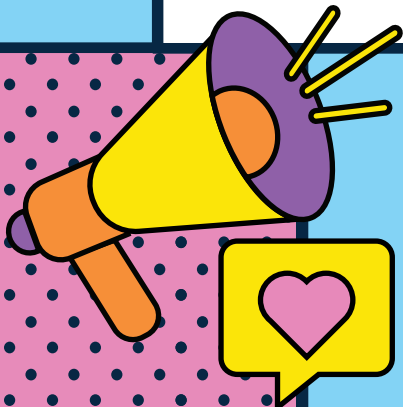


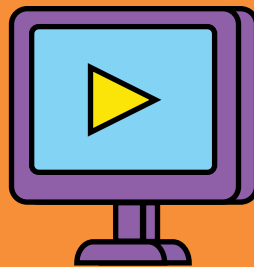


# Rolleston Workshop 01



16 January 2025

Waikirikiri Ki Tua  
Future Selwyn



MY  
FUTURE  
TOWN

# World Café Responses

Rolleston Workshop 1 16 January 2025

## Key Questions

## Community Responses

**What are your top three things for improving your town?**

- Entertainment and things to do for families and teens
- 24-hour medical services
- Better and more diverse parks
- Public transport
- Commercial mix
- Amenities close to living
- Diverse housing
- Affordable housing

**How can transport and access be improved to meet future needs?**

- Public transport (including rail) and cycleways
- Connectivity
- MyWay
- Walkability
- Mixed-use zones
- Quality, consistent pathways (with places to rest and fountains)
- Quality, strategically located, convenient transport

**How can housing be improved to meet future needs?**

- Housing – right type and location
- Housing affordability (ownership models)
- Housing mechanics/incentives for affordability, and penalties for non-compliance
- Housing resilience: insulation, heating, cooling, solar

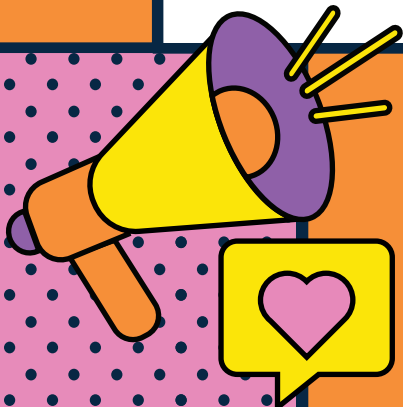
**What do you like about living here and what don't you want to see changed for future generations?**

- Community: population diversity, multi-generational, friendliness, small town/semi-rural feel, manageable population
- Facilities: outdoor, eateries, Te Ara Ātea, activities for children, Foster Park
- Healthcare and education is good but can be improved
- Accessible to move around, walkable
- Convenience
- Parking in town centre and some wide roads with parking options
- Green spaces



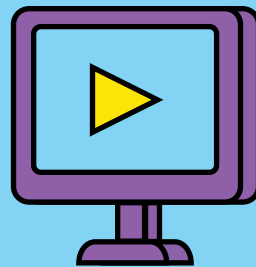
# West Melton

## Workshop with Malvern Community Board



27 January 2025

Waikirikiri Ki Tua  
Future Selwyn



MY  
FUTURE  
TOWN

# World Café Responses

West Melton (with Malvern Community Board) 27 January 2025

## Key Questions

**What are your top three things for improving your town?**

## Community Responses

- Planning and protection for the good things in towns
- Greater communication between Council and towns
  - allowing submissions
- Focused planning: transport between towns; accessibility to medical centres and doctors
- Green spaces
- Rural town atmosphere: growth that considers town appeal; transport around towns not through them
- Cycleways
- Schooling: buses to cater to schoolchildren, pickup spots safer for children – lighting and crossings
- Schooling services developed: they are all at capacity

**How can transport and access be improved to meet future needs?**

- Car-based, poor public transport provision: need higher frequency
- Linkages between towns are essential for education, health, jobs and facilities
- Safety: intersection improvements, crossings, footpaths, schools
- Cycle lane network needed for those who can't drive such as young and elderly; be strategic about where placed
- Cost
- Connector roads are not wide enough – all roads and new subdivisions not designed for current traffic volume
- Investigate rail options – commuter and light rail with Rolleston as the hub
- Future transport – EVs, self-driving cars and Lime scooters

**What do you like about living here and what don't you want to see changed for future generations?**

- Community feel in smaller townships
- Connecting to the side-by-side townships
- Collaborate and engage with Council – using Council resources and funding
- Infrastructure and network option
- Keeping the smaller townships small: connectivity; retaining heritage
- Keep rural atmosphere
- Getting the zoning right – condensing in developed areas and places
- Keep farmland protected; retain productive land

**How can housing  
be improved to  
meet future needs?**

- The swimming centre
- How many people?
- Heritage
- Plan modelling
- Mobile/internet
- Infrastructure: water, sewerage, roads (lighting), rubbish, doctors, communications, transport, retail
- Affordability
- Mixed developments
- Smaller sections (range of housing)
- First-time home buyers
- Ageing in place
- Communications for new development
- Building consents: cost/speed; less red tape, stay in communication
- Range of housing
- Demographics – rent!
- Young families
- Ageing
- Social housing and food banks
- Well-planned green/open spaces
- Community gardens
- Not on productive land
- Good use of land
- Planned, not haphazard

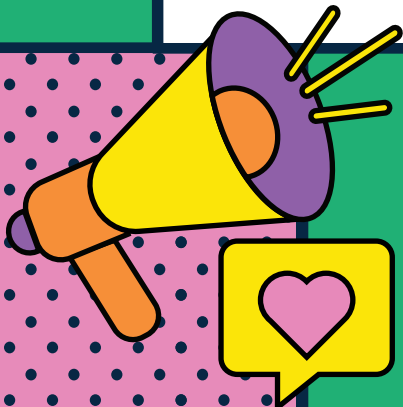
---

**What do you see as  
the role of the rural  
area surrounding  
your town and how  
do you think this  
could change in  
the future?**

- Don't change it
  - Land use – protecting productive land; food and fibre
  - Protect rural amenity
  - We need a service town
  - Buffer around townships to protect rural productivity
  - Rural area: history, heritage and identity
  - Appropriate facilities in rural towns
  - Interconnectivity between towns
  - "Escape" city life
  - Appropriate public land development – "reserve space"
  - Keeping rates affordable is a priority
-

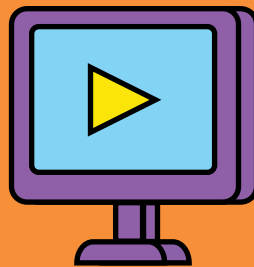


# Leeston Workshop



28 January 2025

Waikirikiri Ki Tua  
Future Selwyn



MY  
FUTURE  
TOWN

# World Café Responses

Leeston Workshop 28 January 2025

## Key Questions

**What are your top three things for improving your town?**

## Community Responses

- Council to facilitate community groups
- Public transport within townships and connecting Selwyn to Christchurch
- Should be appropriate for each town, accommodating community values and needs
- Improved housing options: more variation to support different needs, smaller housing close to town centres
- Keeping industrial areas and their growth relevant to communities, avoiding an ad hoc situation
- Schooling and medical care to support growth: public transport, amenities
- Town plans: future planning specific to towns will help streamline growth and infrastructure needs and will help preserve local values and rural town atmosphere

**How can transport and access be improved to meet future needs?**

- Road widening to accommodate farming equipment
- Safer cycleways
- Better linkages between towns
- Ride Share/MyRide/Transport on demand
- Currently too car-reliant
- Trade-off: need transport to meet needs for growth, but many members of the community don't want too much growth

**What do you like about living here and what don't you want to see changed for future generations?**

- Rural feel/lifestyle/community
- Open spaces
- Community groups
- Not too far, access to environments, amenities and Christchurch
- Good schools
- Low-density housing
- Good facilities
- Celebrating heritage
- Medical/hospital facilities

**How can housing be improved to meet future needs?**

- Mixed housing types – cater for younger home buyers and for the elderly by having smaller, more manageable sections
- Affordability – mixed housing may improve affordability
- Consenting processes are too difficult and rigid – can't be innovative with building materials
- Energy-efficient housing: rainwater tanks, solar
- More thought into planned housing, based on town masterplans and including better subdivision development to reduce parking issues

---

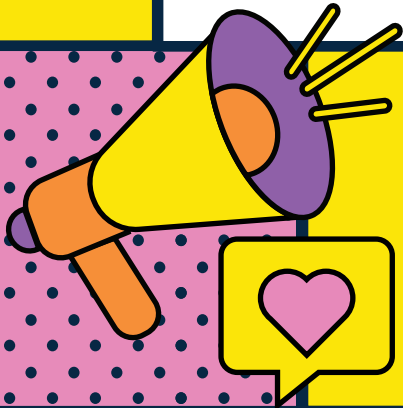
**What do you see as the role of the rural area surrounding your town, and how do you think this could change in the future?**

- Buffer between towns and rural areas – reverse sensitivity considerations
  - Role of rural area to towns: food, amenities, recreation, jobs/ economic contribution
  - Lifestyle properties – rural residential
  - Leeston a rural town, not another Rolleston – retain rural feel
  - Rural towns as rural towns
-



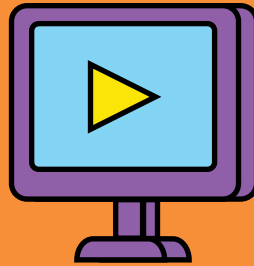


# Lincoln Workshop 01



4 February 2025

Waikirikiri Ki Tua  
Future Selwyn



MY  
FUTURE  
TOWN

# World Café Responses

Lincoln Workshop 1 04 February 2025

## Key Questions

**How can transport and access be improved to meet future needs?**

## Community Responses

- Dedicated ring roads for trucks/services
- Fewer cars in town centres, even small towns experiencing congestion
- Public transport access in towns and between towns
- On-demand public transport
- Wider footpaths – clear and safe
- Cycling – clear and safe
- Subdivision of living streets

**What do you like about living here and what don't you want to see changed for future generations?**

- Green belt, open spaces and semi-rural feel, keep the town's identity
- Housing – larger sections to maintain the rural vibe, mixed housing types and shops spread out
- Safety – infrastructure must match growth and be in place before development
- Public transport – develop near town centre, not everywhere
- Public transport for the elderly – consider stop frequency and trip duration

**How can housing be improved to meet future needs?**

- Avoid housing on productive rural land and limit urban sprawl
- Promote a mixture of housing types supported by community facilities
- Improve resilience from climate change and natural hazards by avoiding housing in inappropriate locations
- Correct the imbalance between central government and local authority control of housing
- Protect local character

---

**What do you see as the role of the rural area surrounding your town and how do you think this could change in the future?**

- Green belts/buffers
- Lifestyle blocks
- Keep and protect
- Recreation – dogs
- Wetlands – biodiversity
- Farming – respect
- Soil qualities
- Utilise productive land
- Central developments
- Prebbleton ring road

---

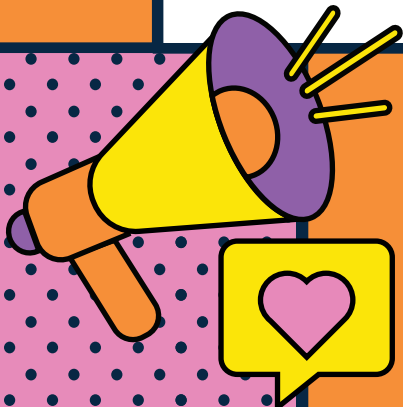
**How can the natural environment be integrated into our towns (e.g. public open spaces, reserves, wetlands, trees and protected areas)?**

- New subdivisions need to have a balance of blue-green areas and housing
  - Protect natural areas; if need to develop around the natural areas, retain and improve the natural areas
  - Integrate natural areas
  - Green belts/stepping stones
  - Tree canopy/mixed?
-



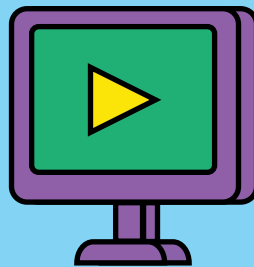
# Kirwee Workshop

(Rural Focus)



10 February 2025

Waikirikiri Ki Tua  
Future Selwyn



MY  
FUTURE  
TOWN

# World Café Responses

Kirwee Workshop (rural focus) 10 February 2025

## Key Questions

**What are your top three things for improving your town?**

## Community Responses

- Water improvements – quality, remove fluoride, chlorine and reduce nitrates
- Flooding and river management including kerb and channel improvements
- More community assets such as playgrounds and community gardens
- Tree planting

**How can transport and access be improved to meet future needs?**

- Public transport – improved bus services (including school service) and MyWay (on-demand service like Timaru) or minivan
- Community Vehicle Trust – expand current service
- Road safety – intersection upgrades (such as Kirwee), rumble strips, passing lanes, icy road prevention (shelterbelts), and footpath improvements and wider width (including smaller towns)
- Speed reductions (Kirwee, Sheffield) and better signage
- Increase road width in new subdivisions and rural roads (for trucks, milk tankers and tractors)
- More roads sealed (such as Hoskyns Road)
- Expanded EV charging
- Utilise the railway (rail-tram and commuter service)
- Mixed feelings about bike lanes

**What do you like about living here and what don't you want to see changed for future generations?**

- Sense of community and spirit (but need more engagement)
- Small town feel – quiet, limit migration, growth concerns
- Proximity to Christchurch (Darfield as a dormitory)
- Rural environment – rural amenity, fields and open spaces, McHughs, Dark Sky with no light pollution
- Highly productive land
- Valuation and rating system needs improvement (needs to be appropriate to rural and urban areas)
- Development contributions need improvement (a tool to manage growth)

---

## How can housing be improved to meet future needs?

- Initiatives for improved housing quality and efficiency (new materials, heating/cooling, insulation, glazing, healthy homes, solar and rain tanks)
- Ability to age in place – variety of houses for different life stages
- Retirement village for the Malvern Area
- Community housing (work with Ōtautahi Community Housing Trust)
- Mixed housing types including accessible – revisit granny flat rules
- Lifestyle block considerations – fire and revisit subdivision rules, educate new residents in these properties to manage expectations
- Manage growth – growth paying for growth, more than just 600 sqm sections, parking provision, developers' social responsibility, reduce covenants (to suit community and not developer)
- Risk management/resilience – flooding, earthquakes and extreme weather, compulsory insurance

---

## What do you see as the role of the rural area surrounding your town, and how do you think this could change in the future?

- Green belt – transition and buffer zone, green lungs, amenity and spaces to recreate and connect
- Rural land as primary production – places of employment  
Agricultural land – consider changing practices
- Highly productive land – a place of agriculture, biodiversity
- Tree planting – proactive and in berms
- Reserve sensitivity concerns (mushroom example in Prebbleton)
- More development?
- Navigate pollution impacts
- Larger section sizes further out from towns, with bigger sites as buffers
- Navigate politics and government influence

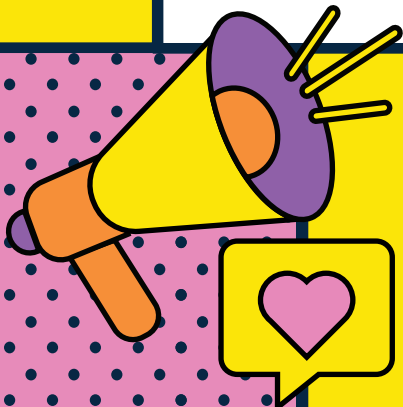
---

## How can the natural environment be integrated into our towns (e.g. public open spaces, reserves, wetlands, trees and protected areas)?

- Tree planting – incentives, rural restoration, reserve contributions, planting of empty spaces, hedges as wind breaks
  - Riparian planting – walkways and corridors
  - Use green spaces more – reserves and dog walking, multi-use spaces rather than generic
  - More onus on developers – new subdivisions have green spaces and reserves
  - McHugh's Forest
  - Utilising water races that are being closed – naturalising and wetlands
  - Maintain remnant biodiversity and natives
-

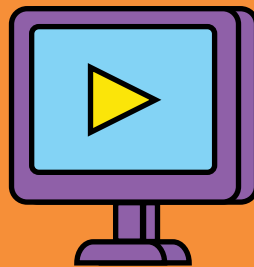


# Lincoln Workshop 02



10 February 2025

Waikirikiri Ki Tua  
Future Selwyn



MY  
FUTURE  
TOWN

# World Café Responses

---

Lincoln Workshop 2 10 February 2025

---

## Key Questions

**What are your  
top three things  
for improving  
your town?**

## Community Responses

- Lack of facilities in Prebbleton
  - Access traffic issues
  - No public transport
  - Improve student accommodation
  - Enhance and retain rural/character/heritage feel
  - More health and educational facilities
  - Leverage relationships with university and agriculture
  - Retain university town feel
  - More parking
  - Lack of educational facilities
  - Not much for youth to do
  - Focused, managed intensification while maintaining heritage values
  - Develop town centre
  - Bike lane
  - Improve traffic safety within Lincoln
  - Get rid of heavy vehicles
  - More variety in housing types
  - Maintain community feel
  - Maintain green belt
  - Slow greenfield development
  - Lack of community facilities
  - All-weather markets in Prebbleton
-



---

## How can transport and access be improved to meet future needs?

- Roads for specific purposes with specific dimensions
- Better connections to Christchurch for all transport types: separated space, dedicated and expanded
- Active connection between towns
- Freight and trucks managed better – bypass? protect farms
- Charging opportunities and transition to EV and beyond, including Park'nRide
- Public transport is improved, direct and easy (supporting density)
- Connections to community facilities – multiple types (if all in Rolleston)
- Safety of key connections and intersections
- Less reason to leave your town
- Prebbleton is not a through road; town centre is a destination
- Improve crossing in Prebbleton
- Prebbleton – Kakaha Park bus stop
- Lincoln town centre – for cycling and walking
- Shift parking in Lincoln town centre

---

## What do you like about living here and what don't you want to see changed for future generations?

- Identity – community spirit and connections
- Identity – village feel, rural small town
- Identity – university and research
- Identity – not another Rolleston
- Identity – history
- Biodiversity – tree canopy, Liffey, wetlands, rural and soils
- Lifestyle – safe, good schools, recreation, all ages, employment, liveability, good for families)

---

## How can housing be improved to meet future needs?

- Energy efficiency, including colour of roofs – heat island effect
  - Intensive housing in the right places – not on good soils, blocking sunlight, in historical precincts or where it interferes with village character or high-water table
  - Townhouses and low apartment blocks – if there are new commercial builds along Gerald Street, have residential flats above
  - Trees and green space
  - Affordable housing
  - Supported housing
  - Urban limits and green belts – farmers need to be able to keep farming
  - Better permeable vs impermeable ratio
  - Carpark? Developers to pay their true cost, not imbalanced or spilling onto existing ratepayers
-

---

**What do you see as the role of the rural area surrounding your town and how do you think this could change in the future?**

- Council should celebrate the history of the town – welcome sign
- Diversity of the town is important and values tied to the university
- The university and agricultural research relies on the rural land and needs to be protected
- Support for hard-lined green belt to protect the land
- Lincoln rural land is critical for identity – where we have come from, but we're losing it a bit
- Need to protect and uplift the rural community but also link them into the town community

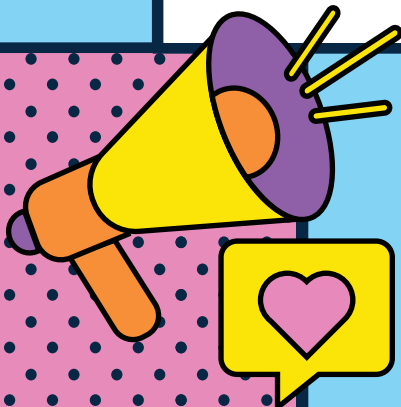
---

**What types of businesses, industries or jobs would best support Lincoln and wider Selwyn's growing economy?**

- Agri-tech research – Lincoln University and CRIs
  - Leverage unique historical character
  - Technology and innovation
  - Industrial to stay in Rolleston
  - Scale-appropriate
  - Good transport for roads and rail
  - Zoning (industrial and quarries)
  - Live and work connection
  - Housing for industrial
  - Self-reliance – solar, eco-conscious
-

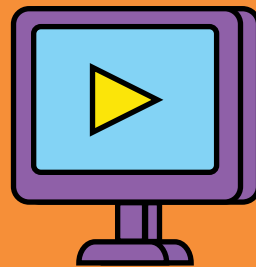


# Rolleston Workshop 02



6 March 2025

Waikirikiri Ki Tua  
Future Selwyn



MY  
FUTURE  
TOWN

# World Café Responses

Rolleston Workshop 2 06 March 2025

## Key Questions

**What are your top three things for improving your town?**

## Community Responses

- Improved rates and money management
- Entertainment options in Rolleston
- Springston Reserve upgrade and more parking
- Review chlorination
- Investigate rail for public transport
- Two lanes at the end of SH1 motorway instead of merging to one lane
- More variety in housing and mixed-use zoning
- 24-hour medical services
- Less red tape – process improvement and faster consent
- More parking around Foster Park
- Infrastructure to support growth
- Low cell phone and broadband/fibre coverage

**How can transport and access be improved to meet future needs?**

- Street width in new subdivisions – currently too narrow
- Public transport improvements – higher frequency, more stops
- Pedestrian connections and pathways between subdivisions
- Footpaths on both sides of the street
- Traffic control and safety review – fewer speed bumps, update turn signals
- Review speed limits – no 60 km where there are no houses, keep at 80 km
- Passing lanes on SH73 and between West Melton and Yaldhurst
- Repair potholes
- Rail for passengers and freight

**What do you like about living here and what don't you want to see changed for future generations?**

- The Willows
- Green space – rural side of Selwyn
- Productive soils and farmland
- Lincoln University – students, vibrancy, agri-research and science
- Support from Council for community groups and clubs
- Fire service – still volunteer
- Retain rural feel
- Dark Sky opportunities

---

## How can housing be improved to meet future needs?

- Granny flats – not many currently, under review by government
- Townhouses – more variety of houses needed
- More high density, but not high rise – all within walking distance
- Focus on safety – more people = more crime, CPTED (Crime Prevention Through Environmental Design)
- Covenants – but balance with the need for different housing types
- West Melton – strategic plan for growth, not all over the place; not all developers have done a good job
- Weedons Ross Road and West Melton “wedge” rezoned
- Lot sizes – 600sqm too small

---

## What do you see as the role of the rural area surrounding your town and how do you think this could change in the future?

- Green belt – certain types of land should never be built on
- Protect our good soils; Council should stop development in some areas
- Charm of living in Selwyn – new residents need to understand that rural noises/smells are different to urban
- Urban sprawl can't take over productive land – nice to keep towns separate and have rural areas between them
- Mayor doesn't want Lincoln and Rolleston to meet
- The Willows is a really nice place to go – don't change

---

## What types of businesses, industries or jobs would best support Lincoln and wider Selwyn's growing economy?

- More entertainment – bowling, mini golf, things for children and teenagers, and after-hours such as movie theatre
  - More variety in commercial in all towns – mixed-use zoning, great downtown vibe, not car-dependent
  - Medical centres and after-hours services
  - Finish off the Rolleston Reserve development behind Te Ara Ātea
  - Industrial area – done well in Rolleston, not needed in West Melton – good job opportunities.
  - Retail – more clothing, Costco, Kmart so you wouldn't have to leave Selwyn
-