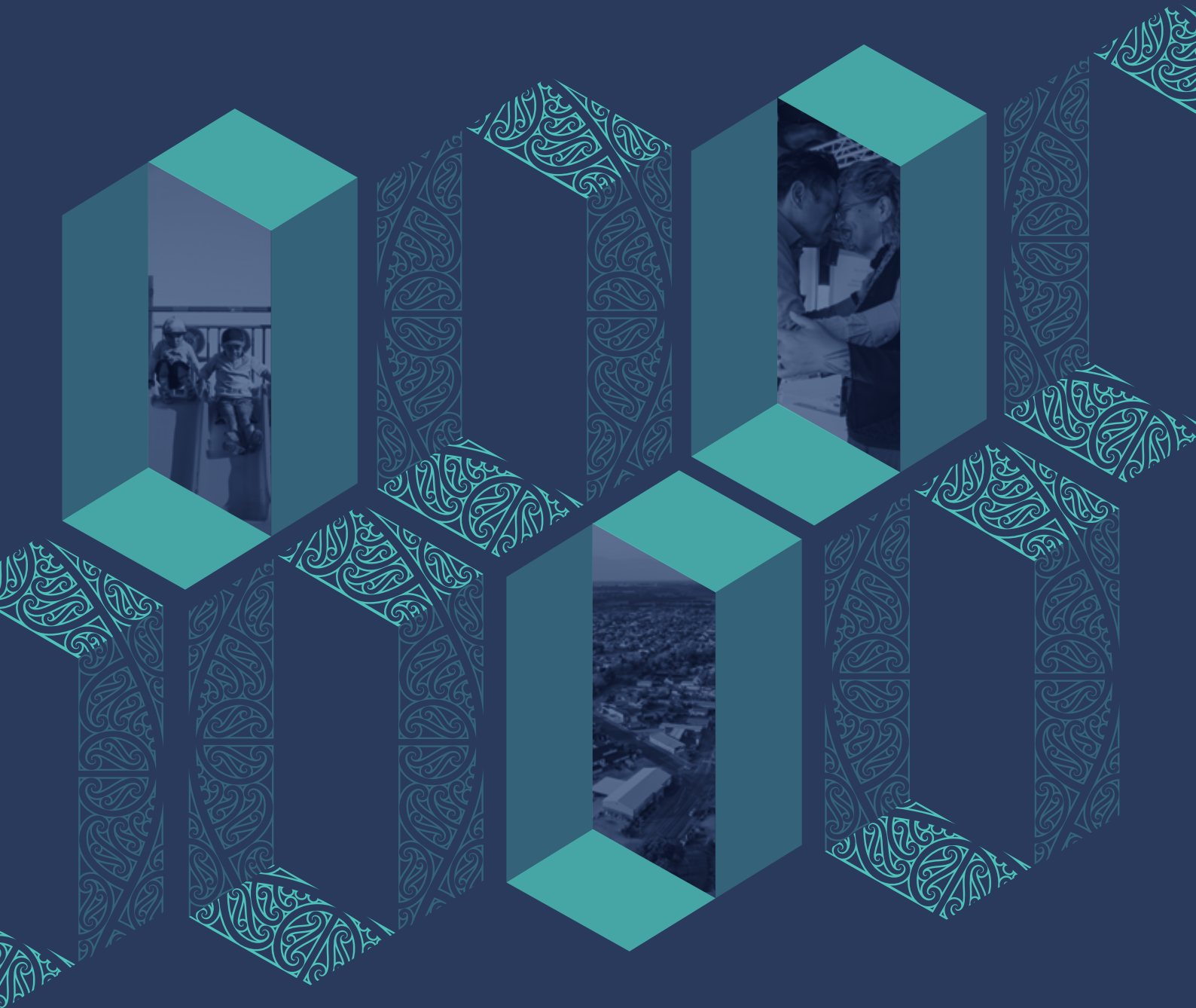


Waikirikiri Ki Tua

Future Selwyn

Consultation Document

July 2024



Ko te takata, ko te oraka, ko te āpōpō o Waikirikiri.

Our people, our wellbeing, our tomorrow.

Contents

Our Cultural Connection	3
About this Strategy	4
Timeline	5
Setting the Scene	6
The Strategy	7
Our Long Term Aspirations	8
Outcomes	9
Directions	10
Strategic Priorities	12
Urban Form Direction	13
District Picture	14
Your Submission	15

Our Cultural Connection

Waikirikiri Ki Tua is a commitment to striving for a better future. Waikirikiri is the original name for the Selwyn River.

The word **Waikirikiri** refers to water washing over gravel.

Ki tua refers to the beyond, on the further side (of a solid body). It is used in context with Waikirikiri to speak to the desire to move beyond the present and to anticipate and navigate into the future.

Ki Tua also references the past, ki tua whakarere, the Selwyn of old.

It is important to remember where we have come from, our whakapapa, our foundations.

Waikirikiri Ki Tua provides the platform for us to be tenacious, agile and alert to the opportunities ahead of us.

The pou, second in the door on the tara iti (left side of the meeting house) is dedicated to Waikirikiri Ki Tua Future Selwyn.





About this Strategy

Waikirikiri Ki Tua Future Selwyn is our vision and aspiration for the Selwyn district for the next 50 to 100 years. It includes a strategic framework that will guide where and how we grow into the future, the work we do, and the projects we deliver for our communities.

It's about the future we leave for the generations to come.

The strategy is our long-term approach to intergenerational wellbeing, sustainability, resilience, growth, change and development in Waikirikiri Selwyn. It is a future-focused strategy that provides the strategic and spatial direction for navigating our future.

This means Waikirikiri Ki Tua Future Selwyn will shape:

- the feel of our neighbourhoods
- the efficiency and sustainability of our transport options
- the wellbeing and vitality of our communities and businesses
- the integrity of our natural environment, and
- the resilience of our infrastructure.



Have your Say

We have developed the Waikirikiri Ki Tua Future Selwyn strategy based on community input on the Greater Christchurch Partnership Spatial Plan and engagement on our two previous Long-Term Plans.

We now need your help to ensure we have got the strategy right. Have your say from Monday 1 July to Sunday 4 August 2024.

This is your opportunity to share your views with us on whether we have captured your vision for our district's future, and if you agree with our direction for township growth and connection.

Explore Waikirikiri Ki Tua Future Selwyn on the interactive website today and have your say on the strategy. Visit selwyn.govt.nz/future.

Your feedback will be used to finalise the strategy and will guide the development of three Area Plans that we will publicly consult on later this year.

Timeline



Setting the Scene

People love Waikirikiri Selwyn. We have experienced unprecedented growth, change and development in recent decades, and so far, have responded well to the pressures and opportunities this growth entails. We expect continued growth in our future.

Since 2009, our population has more than doubled, and in one decade (2013 - 2023) we grew by 74% - making us the fastest growing district in the country. New arrivals to Waikirikiri Selwyn are looking for modern, affordable housing, with good amenities and services nearby. This has fuelled demand for new infrastructure, which Council and the Government have been delivering through investment in schools, parks, recreation facilities, water and wastewater systems, and community and health facilities.

Our economy has also been expanding. Unemployment remains low, and new businesses continue to open here, more quickly than the national average.

We aren't just growing, we are changing too.

Although we have a relatively youthful population right now, we are aging. In the next 30 years, our demographic make-up will demand effective plans for considerable growth that takes into account all age groups, especially our aging community.

Ethnically, we are changing too. In recent years, there has been a declining percentage of people of European descent, and a growing percentage of people who identify as Māori, Pacific Peoples, Asian, Middle Eastern, Latin American and African.

Between 2018 and 2023, there was a large increase in our Asian population, who now account for more than 11% of our community.

In addition to a changing community, we expect to continue facing the effects of climate change in the years ahead. You can see four different scenarios for our future and how climate change could affect our district, at selwyn.govt.nz/future.

Waikirikiri Ki Tua Future Selwyn will provide a long-term, strategic approach to intergenerational wellbeing, sustainability, resilience, growth, change and development in our district, as we navigate the coming 50-100 years, and the continued growth and change to come.

 **District population 2024** (projected)*
86,000+

 **Projected population 2054** (estimated)*
153,000+

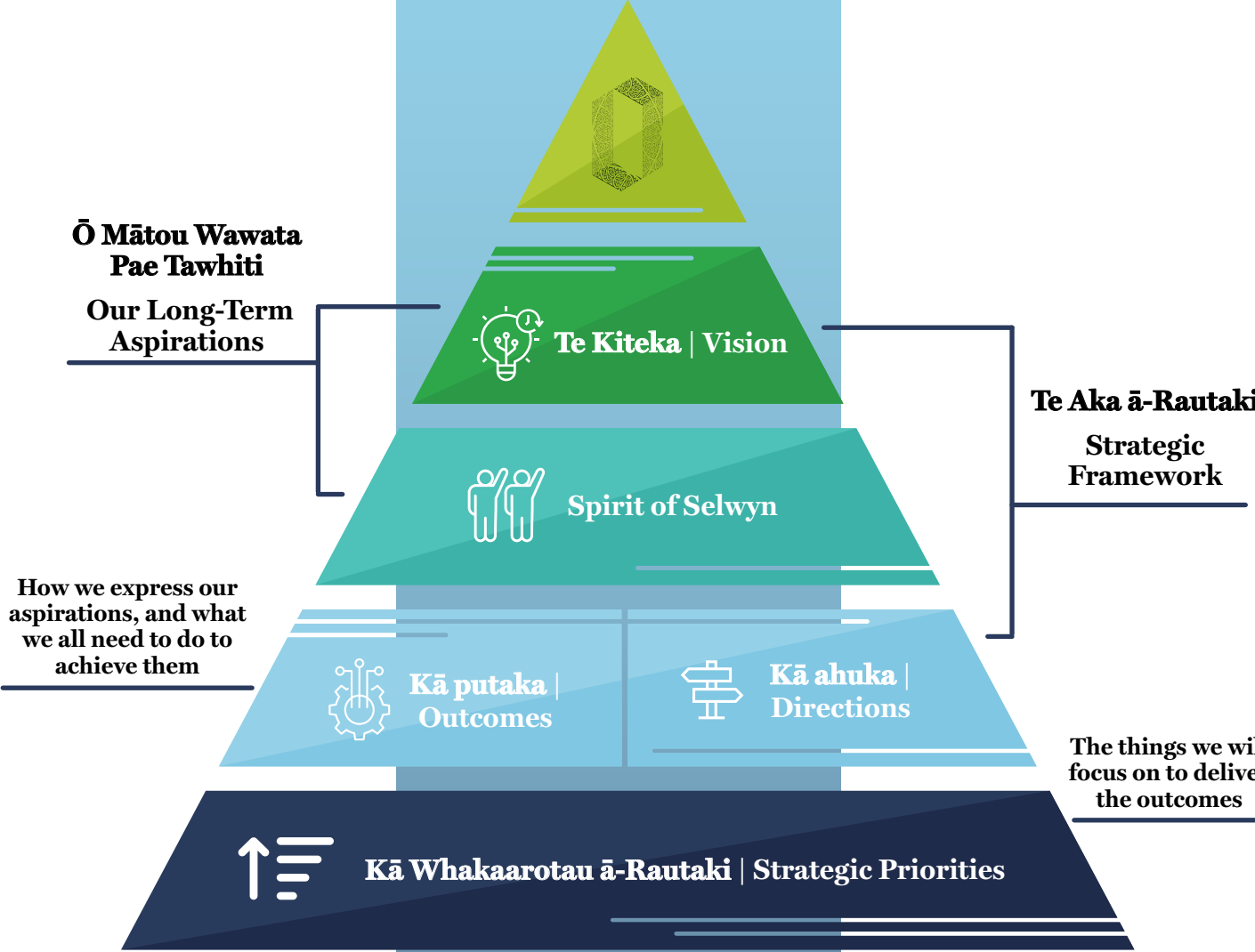
Town Populations

	2024 (estimated)	2054 (estimated)
Rolleston	31,363	55,250
Lincoln	10,438	20,770
Prebbleton	5,523	8,525
Darfield	3,350	6,693
Leeston	2,570	3,982
West Melton	2,865	6,525

Age Distribution

	2024 (estimated)	2054 (estimated)
0 - 14 years	20.42%	17.33%
15 - 39 years	33.35%	29.06%
40 - 64 years	32.98%	29.40%
65 years +	13.25%	24.21%

The Strategy



Ō Mātou Wawata Pae Tawhiti

Our Long Term Aspirations

Our aspirations are in two parts:
Te Kiteka | Vision and *Spirit of Selwyn*.

Te Kiteka | Vision captures the overarching aspiration for Waikirikiri Selwyn in a short statement. Spirit of Selwyn goes into more detail and provides a clear narrative of our future.

To reach these aspirations, we have **Kā putaka | Outcomes** that express the aspirations, and **Kā ahuka | Directions** that set out what we all need to do to achieve the aspirations.

Te Kiteka | Vision

“A liveable, innovative and connected Waikirikiri Selwyn, filled with opportunity and prosperity.”

Spirit of Selwyn

Our Waikirikiri Ki Tua Future Selwyn is a Waikirikiri Selwyn in balance, from the mountains to the sea, and everything in between. Our Waikirikiri Ki Tua Future Selwyn is one of sustainable prosperity, where innovation, creativity and ambition ensures intergenerational wellbeing and opportunities for all.

Our places are distinct, liveable, vibrant, resilient and connected; enriching our lives now and into the future. Our sustainable and connected urban form sees improved connections between towns, new opportunities and choices for how we live, work and get around. Our growth is in harmony with te taiao on which we depend and care for so that we and future generations can prosper. The mauri and health of Te Waihora is restored, there is an abundance of mahinga kai and other resources. Our big backyard, with all its mountains, lakes, forests, wetlands, rivers, estuaries, the coast, and our clear sky is a taonga on our doorstep which we all collectively care for.

Our Waikirikiri Ki Tua Future Selwyn is a place where people feel they belong, are able to connect with one another, share experiences, celebrate our differences and value our heritage. Like the kahikatea the strength and resilience of communities comes from how we support and connect with one another. Our Waikirikiri Ki Tua Future Selwyn is a place where we ensure that we can all prosper and lead fulfilling lives. Our economy is productive and resilient, driven by innovation and creativity. We embrace new technologies and get ahead of the curve, with infrastructure and investment unlocking the full potential of Waikirikiri Selwyn.

Our Waikirikiri Ki Tua Future Selwyn is a shared future, where enduring and collaborative relationships are built on trust, reciprocity, commitment and mutual respect. Te Tiriti o Waitangi guides our partnership with mana whenua where we work together to realise intergenerational wellbeing for our people and te taiao. Our local voice is loud; we advocate and influence for our people and all of Waikirikiri Selwyn. Our communities are empowered to take action on the things they care about and are listened to when they call upon others for change.

Kā putaka

Outcomes



- A great place to call home**
- Inclusive Communities
 - Thriving Communities
 - Resilient Communities
 - Recognised Communities



- A Healthy and Restored Environment**
- A Rich and Diverse Land
 - Thriving Ecosystems and Biodiversity
 - Healthy Water
 - Living within Environmental Limits

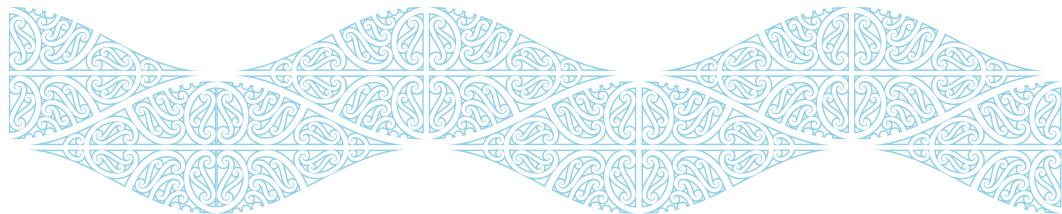


- A Regenerative Economy**
- Prosperous People
 - A Productive, Low-Carbon and Diverse Economy



- A Sustainable and Connected Urban Form**
- Liveable, Low Carbon Towns
 - Sustainable and Accessible Transport
 - Quality Infrastructure

Kā ahuka Directions



The Directions are numbered under each of the Outcomes:

Inclusive Communities

- 1. Honour Te Tiriti and strengthen our partnership with Mana Whenua
- 2. Promote biculturalism, cultural knowledge and cultural competence
- 3. Focus our efforts on communities and areas that experience the greatest inequalities
- 4. Design safe and welcoming places for all
- 5. Foster a sense of belonging and connection
- 6. Value and celebrate our diversity and multiculturalism

Thriving Communities

- 1. Empower and support communities to enjoy and fully participate in community and civic life
- 2. Invest in and shape our public spaces
- 3. Provide community spaces and facilities responsive to the needs of present and future generations
- 4. Advocate for greater provision and accessibility of services and facilities that improve quality of life
- 5. Support and encourage our communities to lead healthy, active and fulfilling lives
- 6. Provide opportunities for social connection and building relationships

A Rich and Diverse Land

- 1. Protect highly productive land for land-based primary production
- 2. Protect important natural areas, features and landscapes
- 3. Integrate nature-based solutions
- 4. Increase the extent, connectivity and accessibility of the green network
- 5. Green our urban environment

Resilient Communities

- 1. Focus on place-based solutions and the needs of local communities
- 2. Enable and enhance community resilience
- 3. Empower collective action, responsibility and community-led initiatives
- 4. Reduce risks faced by communities from natural hazards and the impacts of climate change
- 5. Increase our readiness for emergencies and disasters
- 6. Increase our ability to effectively respond to and recover from emergencies and disasters

Recognised Communities

- 1. Protect our culturally significant sites and areas
- 2. Protect and promote our local heritage and notable trees
- 3. Promote the unique identity of our towns and places
- 4. Promote our rural identity
- 5. Celebrate our local arts and traditions
- 6. Support community events and programmes

Thriving Ecosystems & Biodiversity

- 1. Protect and maintain indigenous biodiversity
- 2. Restore habitats and ecosystems
- 3. Protect and enhance the health and abundance of taonga species and mahinga kai
- 4. Enhance nature’s contribution to wellbeing and the services of ecosystems

Healthy Water

- 1. Prioritise the health and wellbeing of water
- 2. Protect and restore the mana and mauri of water
- 3. Protect and enhance Te Waihora and all tributaries
- 4. Protect sources of water and human health
- 5. Recognise the interconnectedness of the blue network

Living within Environmental Limits

- 1. Protect highly productive land for land-based primary production
- 2. Protect important natural areas, features and landscapes
- 3. Integrate nature-based solutions
- 4. Increase the extent, connectivity and accessibility of the green network
- 5. Green our urban environment

Prosperous People

- 1. Provide equitable access to employment and economic opportunities
- 2. Develop and prepare our people through education, training and lifelong learning
- 3. Support and enable local business to thrive
- 4. Promote a just transition through disruption and change
- 5. Support social enterprise
- 6. Support Iwi Maori economic aspirations
- 7. Facilitate connections, collaboration and the sharing of knowledge
- 8. Attract and retain talent and skills

A Productive, Low-Carbon and Diverse Economy

- 1. Promote economic diversification to build economic resilience
- 2. Decarbonise the economy
- 3. Support a high performance and sustainable rural economy
- 4. Support growth in industries with high innovation potential
- 5. Enable sufficient development capacity for business land
- 6. Encourage visitors to the district
- 7. Improve the efficient movement of freight and goods
- 8. Attract spending and inward investment

Liveable Low Carbon Towns

- 1. Manage growth in accordance with the township network
- 2. Enable Kāika Nohoaka
- 3. Promote and incentivise intensification in appropriate locations
- 4. Enable sufficient development capacity for housing
- 5. Promote quality housing
- 6. Enable housing choice and affordability
- 7. Strengthen the resilience of towns to natural hazards and climate change
- 8. Focus and incentivise growth in areas free from significant risks from natural hazards

Sustainable and Accessible Transport

- 1. Prioritise sustainable transport options
- 2. Enhance accessibility
- 3. Improve connectivity within and between towns
- 4. Support a safe and efficient transport system
- 5. Support and develop connected public transport and active transport networks

Quality Infrastructure

- 1. Strategically plan and coordinate infrastructure
- 2. Strengthen the resilience of infrastructure to shocks and stresses
- 3. Deliver timely and intergenerational infrastructure
- 4. Make efficient use of existing infrastructure
- 5. Maintain and operate infrastructure efficiently and affordably
- 6. Prioritise investments in infrastructure that deliver on multiple outcomes over generations
- 7. Encourage the reduction of emissions from the construction and operation of infrastructure

Kā Whakaarotau ā-Rautaki

Strategic Priorities

Kā Whakaarotau ā-Rautaki | Strategic Priorities set out where we will focus our efforts to deliver multiple outcomes of the Strategic Framework and make progress on the aspiration of Future Selwyn.

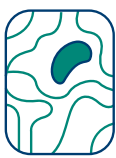
Each Strategic Priority represents an area for increased attention and holds immense potential for transformational change. Kā Whakaarotau ā-Rautaki | Strategic Priorities will guide the detailed spatial planning of the Future Selwyn Area Plans.

There are six Strategic Priorities:



Ō tātou Kāika | Our Housing

Our homes and neighbourhoods are the foundation of our wellbeing. Everyone deserves to live in a safe, warm, dry and healthy home they can afford. We need to ensure we have not only enough homes, but that our homes meet the diverse needs of our communities over time. Housing must provide for greater choice in the places people want to live. It must be accessible, diverse, sustainable and affordable.



Tō tatou Whatuka Wai Ua Kahuraki me te Kākāriki | Our Blue-Green Network

Our blue-green network is a series of spaces and corridors that connects water bodies, parks, green areas and the coast. Elements include streams, stormwater drains, and wetlands, as well as trees, reserves and greenways. The network is of immense value to us and benefits our wellbeing. A blue-green approach better reflects ki uta ki tai, which requires a whole-of-system view of the environment.



Tō tātou Tūāhaka | Our Infrastructure

Infrastructure is made up of layers of connected systems and networks that deliver services we need to provide for our wellbeing. Our infrastructure includes water, waste, energy, transport, telecommunications, airports and ports. It represents some of our longest lived and expensive assets, and requires a coordinated system-wide approach to unlock our full potential.



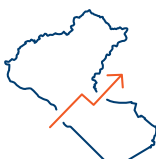
Ō tatou Hapori | Our People and Communities

Our people and communities are at the heart of Waikirikiri Selwyn. They deserve a place where they feel connected, supported, included and empowered to reach their potential. We need to ensure all people can live fulfilling lives into the future. Education, health, arts, culture, heritage, safety, community facilities, venues, events, sport and recreation support intergenerational wellbeing.



Ō tatou Waka | Our Transport

Transport includes all the networks and systems that allow us to get where we need to go. Without it we couldn't get to work or school, connect with people, spend time in our communities, or access businesses and markets. Our transport system includes the vehicles we use, the physical network, digital technologies, and transport services. Our transport lifts productivity and supports our wellbeing.



Tō tatou Ōhaka | Our Economy

Our economy is where we do business, produce goods and services, create, innovate, grow our knowledge, attract investment, and use our skills and talents. A thriving economy is essential for our wellbeing and shared prosperity. It needs to be inclusive, productive, sustainable and resilient to provide better job opportunities, higher wages, and a higher standard of living for our people and communities.

Te Ahuaka ā-Āhua Tāone

Urban Form Direction

Urban form is about how communities are designed and structured, the way they connect, and the location of different developments. Our direction for urban form is balanced growth where we grow both up and out in a way that promotes the connectivity and sustainability of Waikirikiri Selwyn. This is done through:

- Greater intensification around centres, public transport stops and along public transport corridors.
- Greater housing choice with more affordable housing options.
- Thriving neighbourhoods that are well-designed, inclusive and connected which supports the needs of communities now and in the future.

Town Network

Our town network outlines the role and function of our towns as well as the relationship between towns within the network. It has been formed on the basis of:

- Population
- Location
- Centre(s), and
- Other significant features.



Movement

We are focused on the movement of our people, with public transport and Mass Rapid Transit (quicker, more frequent, higher-capacity public transport) promoting connectivity and sustainability. This includes:

- Enhanced road-based public transport and a mass rapid transit route between Rolleston and Prebbleton.
- Passenger rail running through Rolleston North with connections to Dunsandel and Darfield that will support passenger rail extensions in our region.
- A network of road-based public transport that connects our towns and centres through to the wider public transport and mass rapid transit network.
- Integrating public transport and mass rapid transit with enhanced active transport networks (such as walking and cycling) in our towns to support accessibility.

Place

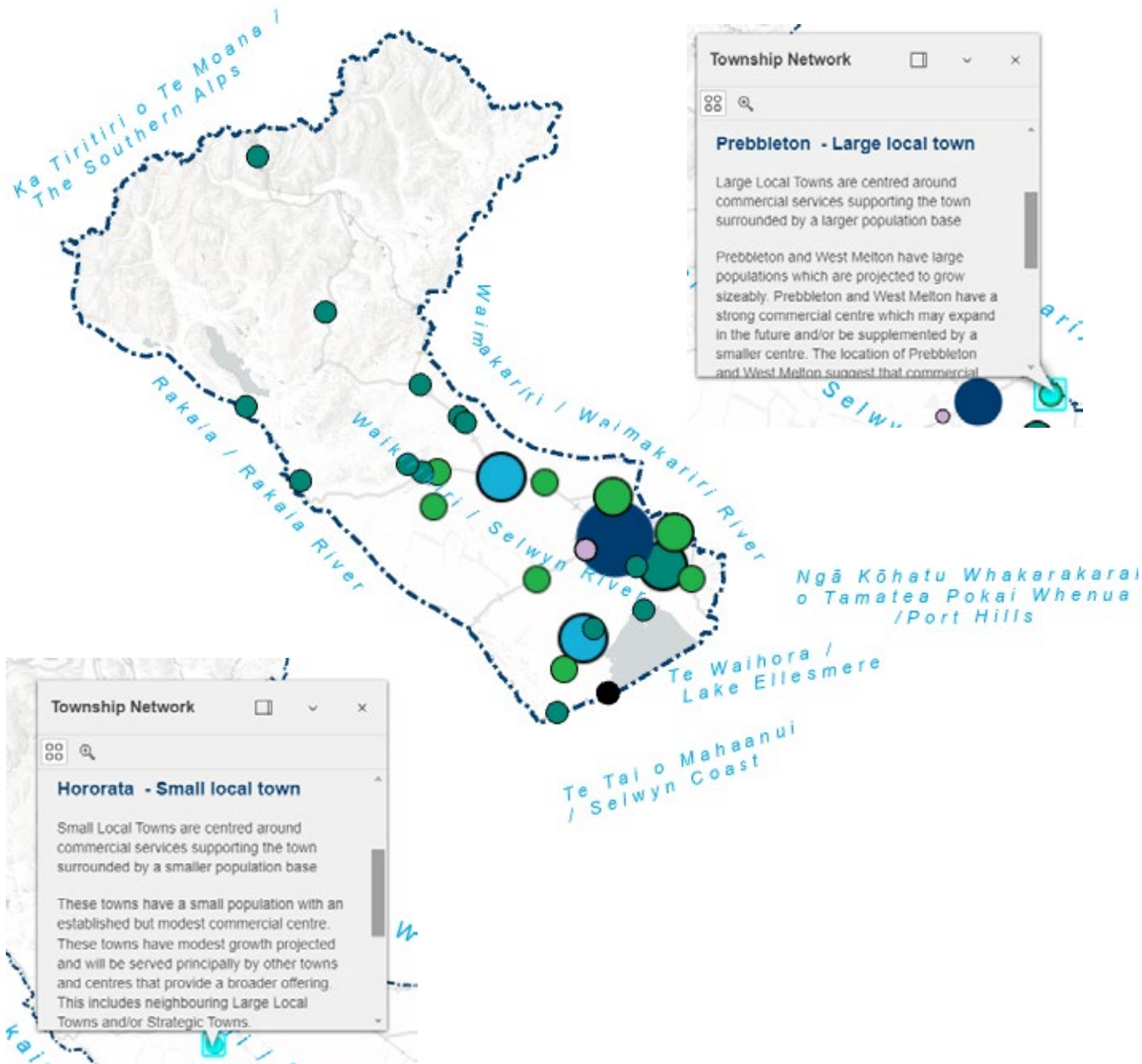
When we consider our urban form, particularly our built environment, it is clear that the mix of land uses, range of activities, and diversity of building types, design and density all shape our quality of life. We need to grow both up and out in the future, and ensure that we 'do density well' with careful consideration and thoughtful design.



Te Kiteka Takiwā District Picture

The District Picture is the spatial expression of the strategic direction of Waikirikiri Ki Tua Future Selwyn. Visit selwyn.govt.nz/future to explore the interactive map and see how different aspects are displayed, and where.

The map layers include key infrastructure, Christchurch international airport, urban growth, land transport, our green natural capital, freshwater, land use capability, and key constraints.



Your Submission

You can make a submission using this form, or by completing the online submission form on the Council website – selwyn.govt.nz/future. Submissions close 5pm, 4 August 2024.

If you need extra space for your submission, use additional paper and attach it to this form. Please include your name on the additional paper. Anyone can make a submission. All submissions, including names are publicly available.

Submissions will only be used for the purpose of this consultation process. All submissions will be considered by Council before making a decision.

Submitter details

Please note: all fields marked with an asterisk (*) are compulsory

First name*

Last name*

Address*

Town*

Postcode*

Contact number*

Email address*

Are you submitting on behalf of an organisation?*

☐ Yes ☐ No

If yes, please state the name of the organisation*

Do you want your name to be kept private?*

If so, what you write in your submission will still be publicly available.

☐ Yes ☐ No

Do you wish to attend a hearing to present your submission in person?*

☐ Yes ☐ No

If yes, someone will be in contact with you to arrange the date and time.

Questions

Te Aka ā-Rautaki | Strategic Framework (our vision of the future)

1. Does the Vision and Spirit of Selwyn describe a future you want for Selwyn and our generations to come? *In your answer, think about what things you agree are important, and if there is anything missing or that does not reflect your aspirations for Selwyn.*

☐ Yes ☐ No

Please explain:

2. Do the Strategic Framework and Outcomes represent your values for the district's future? *In your answer, think about what parts of the Framework and Outcomes are important to you, and if there is anything you think should not be there or that is missing.*

☐ Yes ☐ No

Please explain:

3. Do you agree with the Directions we all need to take on to achieve the outcomes for Selwyn? *In your answer, think about whether there are any Directions missing or that you think should not be there.*

☐ Yes ☐ No

Please explain:

4. Which Directions do you think are most important for our district to focus on? Please list them.



Te Ahuka ā-Āhua Tāone | Urban Form Direction
(where we live and how we get around)

5. Have we captured what is most important to you about the way we get around (movement), and where we live and spend time (place) in our Urban Form Direction? *In your answer, think about what you do and do not agree with, whether you think we have accurately captured how our movement and place might change over time, and what you may want to change to shape our neighbourhoods, towns and communities.*

☐ Yes ☐ No

Please explain:

6. What do you think are the most important things to focus on in our neighbourhoods, towns and communities?

Please explain:

Te Kiteke Takiwā | District Picture (a map of how it all works)

7. Do you think the District Picture includes all the important information needed to guide our district’s growth and change in the future? *In your answer, think about what you do and do not support, and what you think might be missing that should be included.*

☐ Yes ☐ No

Please explain:

8. Does the Township Network reflect your views on how our places could change in the future?

☐ Yes ☐ No

Please explain:

General

9. Is there anything else you want to say about Waikirikiri Ki Tua Future Selwyn?

☐ Yes ☐ No

Return this printed submission form by:

- posting it to:
Future Selwyn
PO Box 90, Rolleston 7643
- scanning and emailing it to
communications@selwyn.govt.nz
- dropping it off in person to the Rolleston Council office or one of our Libraries & Service Centres

