



Waikirikiri Ki Tua

Future Selwyn

Summary Document



**Ko te takata,
ko te oraka,
ko te āpōpō o
Waikirikiri.**

Our people, our
wellbeing, our
tomorrow.

Contents

Our Cultural Connection	3
Foreword	4
What is Waikirikiri Ki Tua Future Selwyn?	6
Setting the Scene	7
Implementation	8
Strategic Framework	9
Our Long Term Aspirations	10
Outcomes and Supporting Outcomes	12
Strategic Priorities	20
Urban Form Direction	22
District Picture	23

Our Cultural Connection

Waikirikiri Ki Tua is a commitment to striving for a better future. Waikirikiri is the original name for the Selwyn River.

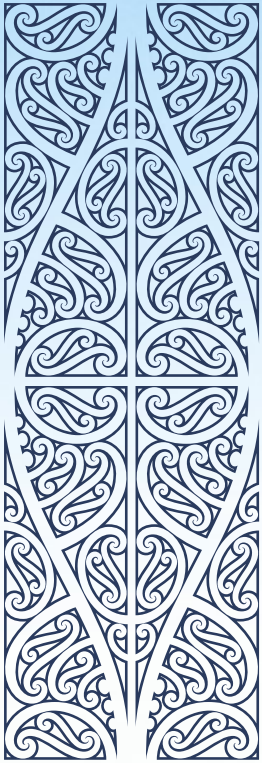
The word **Waikirikiri** refers to water washing over gravel.

Ki Tua refers to the beyond, on the further side (of a solid body). It is used in context with Waikirikiri to speak to the desire to move beyond the present and to anticipate and navigate into the future.

Ki Tua also references the past, ki tua whakarere, the Selwyn of old.

It is important to remember where we have come from, our whakapapa, our foundations.

Waikirikiri Ki Tua provides the platform for us to be tenacious, agile and alert to the opportunities ahead of us.



He Wāhika Kōrero

Foreword

Kia ora koutou,

The journey ahead of us is one of promise and possibility. In Waikirikiri Ki Tua Future Selwyn, we have an opportunity to shape a vision that will guide our community, our people, and our place for the generations to come. This is our collective moment to think beyond today, to consider what kind of home we want to create together in Selwyn.

Our district has always been built on the strength of its people—our willingness to collaborate, our care for the land, and our drive to innovate. Now, as we look forward, we must embrace these values more than ever. As we navigate the challenges of a rapidly changing world, it's crucial that we remain grounded in our shared purpose: a place where everyone feels they belong, where our environment is cherished, and where our economy thrives.

Waikirikiri Ki Tua is not just about planning for the future; it's about imagining the best version of it. It's about taking bold steps to ensure future generations will look back and see a Selwyn that has grown stronger and more resilient. This vision will guide our decisions on how we protect our natural resources, support our communities, and nurture the wellbeing of everyone who calls Selwyn home.

It is through our collective wisdom and shared aspirations that we will create a future that reflects who we are and what we value. From the towering Alps, to the rolling ocean and all our vibrant townships in between, each part of Selwyn has a role in shaping our story.

Together, we can build a future where Selwyn remains a place of opportunity, of connection, and of pride for all who are part of it. Our future begins now, and I am excited to see what we can achieve together.

Ngā mihi nui,



Sam Broughton
Koromatua o Waikirikiri | Mayor of Selwyn



What is Waikirikiri Ki Tua Future Selwyn?

Waikirikiri Ki Tua Future Selwyn is our vision and aspiration for the Waikirikiri Selwyn district for the next 50 to 100 years. It includes a strategic framework that will guide where and how we grow into the future, the work we do, and the projects we deliver for our communities. It's about the future we leave for the generations to come.

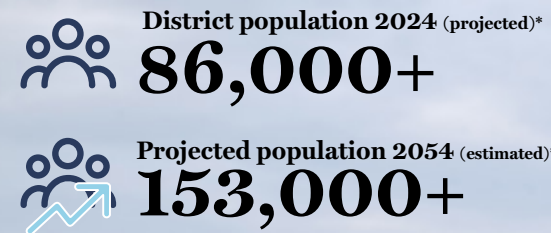
Waikirikiri Ki Tua Future Selwyn is our long-term approach to intergenerational wellbeing, sustainability, resilience, growth, change, and development in Waikirikiri Selwyn.

It provides the strategic and spatial direction for navigating our future.

This means Waikirikiri Ki Tua Future Selwyn will shape:

- the feel of our neighbourhoods
- the efficiency and sustainability of our transport options
- the wellbeing and vitality of our communities and businesses
- the integrity of our natural environment, and
- the resilience of our infrastructure.

This serves as a summary document only. Waikirikiri Ki Tua Future Selwyn strategy is an interactive web-based experience. Visit selwyn.govt.nz/future.



“
It’s about the future we leave for generations to come.
It is a future-focused approach.

Setting the Scene

People love Waikirikiri Selwyn. We have experienced unprecedented growth, change and development in recent decades, and so far, have responded well to the pressures and opportunities this growth entails. We expect continued growth in our future.

Since 2009, the population of Waikirikiri Selwyn has more than doubled and in one decade (2014 - 2024) we grew by 74% - making us the fastest growing district in the country. New arrivals to Waikirikiri Selwyn are looking for modern, affordable housing, with good amenities and services nearby. This has fuelled demand for new infrastructure, which Council and the Government have been delivering through investment in schools, parks, recreation facilities, water and wastewater systems, and community and health facilities.

Our economy has also been expanding. Unemployment remains low, and new businesses continue to open here, more quickly than the national average.

We aren’t just growing, we are changing too.

Although we have a relatively youthful population right now, we are aging. In the next 30 years, our demographic makeup will demand effective plans for considerable growth that takes into account all age groups, especially our aging community.

Ethnically, we are changing too. In recent years, there has been a declining percentage of people of European descent, and a growing percentage of people who identify as Māori, Pacific Peoples, Asian, Middle Eastern, Latin American and African.

In addition to a changing community, we expect to continue facing the effects of climate change in the years ahead. You can see four different scenarios for our future and how climate change could affect our district, at selwyn.govt.nz/future.



Te Rautaki The Strategy

At the heart of Waikirikiri Ki Tua Future Selwyn is Te Rautaki | The Strategy.

This provides the direction we need to navigate our future for a better Waikirikiri Selwyn.



Te Aka ā-Rautaki Strategic Framework

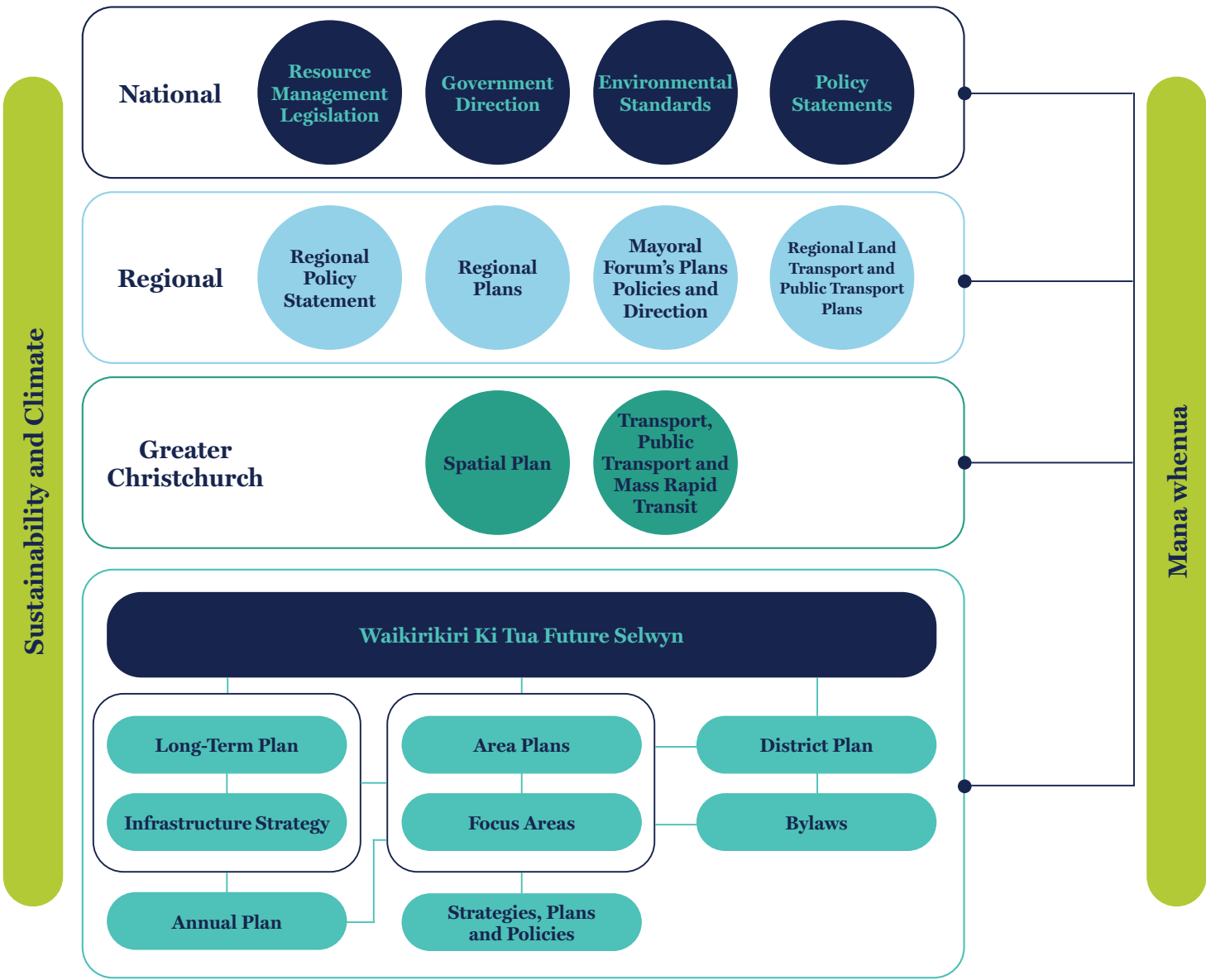
Te Aka ā-Rautaki The Strategic Framework sets out Ō Mātou Wawata Pae Tawhiti Our Long-Term Aspirations for Waikirikiri Selwyn, guided by Kā Putaka Matua Main Outcomes, Te Tautoko Putaka Supporting Outcomes and Kā Ahuka Directions.

Implementation

Waikirikiri Ki Tua Future Selwyn will shape and inform all decisions and investment that Council makes. This includes guiding plans, policies, bylaws, direction and guidance. The next step is to develop Area Plans, which will provide more detailed information and direction on future growth and development of the district.

The projects contained within the Area Plans will be implemented through subsequent Long-Term Plans. As Area Plans are spatial plans, non-spatial actions will be identified and implemented through other instruments, including changes to the District Plan and/or non-statutory plans and policies.

The Area Plans and non-spatial actions will be developed in consultation with the community.



Ō Mātou Wawata Pae Tawhiti

Our Long Term Aspirations

Our aspirations are in two parts:
Te Kiteka | Vision and the *Spirit of Selwyn*.

Te Kiteka | Vision captures the overarching aspiration for Waikirikiri Selwyn in a short statement. The Spirit of Selwyn goes into more detail and provides a clear narrative of our future.

To reach these aspirations, we have **Kā putaka | Outcomes and Supporting Outcomes** that express the aspirations, and **Kā ahuka | Directions** that set out what we all need to do to achieve the aspirations.

Te Kiteka | Vision

“A liveable, innovative and connected Waikirikiri Selwyn, filled with opportunity and prosperity.”

The Spirit of Selwyn

Our Waikirikiri Ki Tua Future Selwyn is a Waikirikiri Selwyn in balance, from the mountains to the sea, and everything in between. Our Waikirikiri Ki Tua Future Selwyn is one of sustainable prosperity, where innovation, creativity and ambition ensures intergenerational wellbeing and opportunities for all.

Our places are distinct, liveable, vibrant, resilient, equitable, and connected: enriching all our lives now and into the future. Our sustainable and connected urban form sees improved connections between towns, new opportunities and choices for how we live, work and get around. The character of our small towns is cherished, and our rural areas are valued for farming and food production. Our growth is in harmony with te taiao on which we depend and care for so that we and future generations can prosper. The mauri and health of Te Waihora is restored, there is an abundance of mahinga kai and other resources. Our big backyard, with all its mountains, lakes, forests, wetlands, rivers, estuaries, the coast, and our clear sky is a taonga on our doorstep which we all collectively care for.

Our Waikirikiri Ki Tua Future Selwyn is a place where all people feel they belong, are able to connect with one another, share experiences, celebrate our differences and value our heritage. Like the kahikatea the strength and resilience of communities comes from how we support and connect with one another. Our Waikirikiri Ki Tua Future Selwyn is a place where we ensure that we can all prosper and lead fulfilling lives. Our economy is productive and resilient, driven by innovation and creativity. We embrace new technologies and get ahead of the curve, with sustainable infrastructure and investment unlocking the full potential of Waikirikiri Selwyn.

Our Waikirikiri Ki Tua Future Selwyn is a shared future, where enduring and collaborative relationships are built on trust, reciprocity, commitment and mutual respect. Te Tiriti o Waitangi guides our partnership with mana whenua where we work together to realise intergenerational wellbeing for our people and te taiao. Our local voice is loud; we advocate and influence for our people and all of Waikirikiri Selwyn. Our communities are empowered to take action on the things they care about and are listened to when they call upon others for change.

“

Our places are equitable,
distinct, liveable, vibrant,
resilient and connected;
enriching all our lives now
and into the future.

Kā Putaka Matua Main Outcomes and Te Tautoko Putaka Supporting Outcomes

Below are the four main outcomes that seek to achieve the Vision and The Spirit of Selwyn. Each of these main outcomes is supported by various supporting outcomes, which in turn, contain directions that describe what needs to be done in order for that outcome to be achieved.



A great place to call home

- Inclusive Communities
- Thriving Communities
- Resilient Communities
- Recognised Communities



A Regenerative Economy

- Prosperous People
- A Productive, Low-Carbon and Diverse Economy



A Healthy and Restored Environment

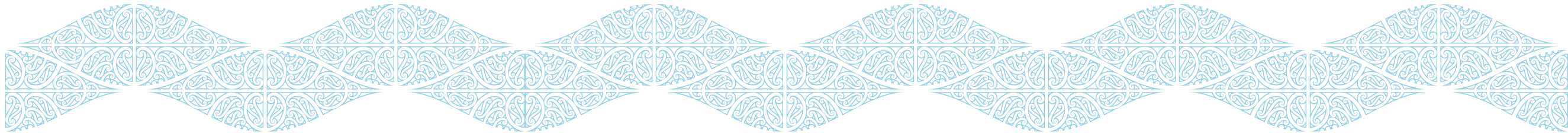
- A Rich and Diverse Land
- Thriving Ecosystems and Biodiversity
- Healthy Water
- Living within Environmental Limits



A Sustainable and Connected Urban Form

- Liveable, Low Carbon Towns
- Sustainable and Accessible Transport
- Quality Infrastructure

Kā Ahuka Directions



The Directions are numbered under each of the Supporting Outcomes:

Inclusive Communities

- IC1** Honour Te Tiriti and strengthen our partnership with mana whenua
- IC2** Promote biculturalism, cultural knowledge and cultural competence
- IC3** Focus our efforts on communities and areas that experience the greatest inequalities
- IC4** Design safe and welcoming places for all
- IC5** Foster a sense of belonging and connection
- IC6** Value and celebrate our diversity and multiculturalism

Thriving Communities

- TC1** Empower and support communities to enjoy and fully participate in community and civic life
- TC2** Invest in and shape our public spaces
- TC3** Provide community spaces and facilities responsive to the needs of present and future generations
- TC4** Advocate for greater provision and accessibility of services and facilities that improve quality of life
- TC5** Support and encourage our communities to lead healthy, active and fulfilling lives
- TC6** Provide opportunities for social connection and building relationships

Resilient Communities

- ResC1** Focus on place-based solutions and the needs of local communities
- ResC2** Enable and enhance community resilience
- ResC3** Empower collective action, responsibility and community-led initiatives
- ResC4** Reduce risks faced by communities from natural hazards and the impacts of climate change
- ResC5** Increase our readiness for emergencies and disasters
- ResC6** Increase our ability to effectively respond to and recover from emergencies and disasters

Recognised Communities

- RecC1** Protect our culturally significant sites and areas
- RecC2** Protect and promote our local heritage and notable trees
- RecC3** Promote the unique identity of our towns and places
- RecC4** Promote our rural identity
- RecC5** Celebrate our local arts and traditions
- RecC6** Support community events and programmes

A Rich and Diverse Land

- RDL1** Protect highly productive land for land-based primary production
- RDL2** Protect important natural areas, features and landscapes
- RDL3** Integrate nature-based solutions
- RDL4** Increase the extent, connectivity and accessibility of the green network
- RDL5** Green our urban environment

Thriving Ecosystems & Biodiversity

- TEB1** Protect and maintain indigenous biodiversity
- TEB2** Restore habitats and ecosystems
- TEB3** Protect and enhance the health and abundance of taoka species and mahika kai
- TEB4** Enhance the services provided by ecosystems

Healthy Water

- HW1** Prioritise the health and wellbeing of water
- HW2** Protect and restore the mana and mauri of water
- HW3** Protect and enhance Te Waihora and all tributaries
- HW4** Protect sources of water and human health
- HW5** Recognise the interconnectedness of the blue network

Living within Environmental Limits

- LWEL1** Reduce Greenhouse Gas Emissions
- LWEL2** Conserve and manage finite resources
- LWEL3** Promote the use of renewable resources over non-renewable resources
- LWEL4** Protect the life supporting capacity of the natural environment
- LWEL5** Reduce waste and promote circular practices

Prosperous People

- PP1** Provide equitable access to employment and economic opportunities
- PP2** Develop and prepare our people through education, training and lifelong learning
- PP3** Support and enable local business to thrive
- PP4** Promote a just transition through disruption and change
- PP5** Support social enterprise
- PP6** Support iwi Māori economic aspirations
- PP7** Facilitate connections, collaboration and the sharing of knowledge
- PP8** Attract and retain talent and skills

A Productive, Low-Carbon and Diverse Economy

- PLCDE1** Promote economic diversification to build economic resilience
- PLCDE2** Decarbonise the economy
- PLCDE3** Support a high performance and sustainable rural economy
- PLCDE4** Support growth in industries with high innovation potential
- PLCDE5** Enable sufficient development capacity for business land
- PLCDE6** Encourage visitors to the district
- PLCDE7** Improve the efficient movement of freight and goods
- PLCDE8** Attract spending and inward investment
- PLCDE9** Protect key infrastructure and industries, safeguarding their effective operations

Sustainable and Accessible Transport

- SAT1** Prioritise and enable sustainable transport options
- SAT2** Enhance accessibility
- SAT3** Improve connectivity within and between towns
- SAT4** Support a safe and efficient transport system
- SAT5** Support and develop connected public transport and active transport networks

Liveable Low Carbon Towns

- LLCT1** Manage growth in accordance with the township network
- LLCT2** Enable Kāika Nohoaka
- LLCT3** Promote and incentivise intensification in appropriate locations
- LLCT4** Enable sufficient development capacity for housing
- LLCT5** Promote quality housing
- LLCT6** Enable housing choice and affordability
- LLCT7** Strengthen the resilience of towns to natural hazards and climate change
- LLCT8** Focus and incentivise growth in areas free from significant risks from natural hazards

Quality Infrastructure

- QI1** Strategically plan and coordinate Infrastructure
- QI2** Strengthen the resilience of infrastructure to shocks and stresses
- QI3** Deliver timely and intergenerational infrastructure
- QI4** Make efficient use of existing infrastructure
- QI5** Maintain and operate infrastructure efficiently and affordably
- QI6** Prioritise investments in infrastructure that deliver on multiple outcomes over generations
- QI7** Encourage the reduction of emissions from the construction and operation of infrastructure

Kā Whakaarotau ā-Rautaki

Strategic Priorities

Kā Whakaarotau ā-Rautaki | **Strategic Priorities** sets out where we will focus our efforts to deliver multiple outcomes of the Strategic Framework and make progress on the aspirations of Waikirikiri Ki Tua Future Selwyn.

Each Strategic Priority represents an area for increased attention and holds immense potential for transformational change. **Kā Whakaarotau ā-Rautaki | Strategic Priorities** will guide the detailed spatial planning of the Waikirikiri Ki Tua Future Selwyn Area Plans.



Ō tātou Kāika | Our Housing

Our homes and neighbourhoods are the foundation of our wellbeing. Everyone deserves to live in a safe, warm, dry and healthy home they can afford. We need to ensure we have not only enough homes, but that our homes meet the diverse needs of our communities over time. Housing must provide for greater choice in the places people want to live. It must be accessible, diverse, sustainable and affordable.



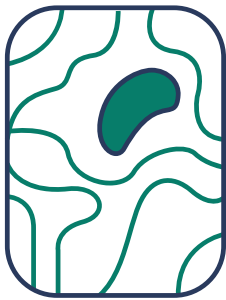
Tō tātou Tūāhaka | Our Infrastructure

Infrastructure is made up of layers of connected systems and networks that deliver services we need to provide for our wellbeing. Our infrastructure includes water, waste, energy, transport, telecommunications, airports and ports. It represents some of our longest lived and expensive assets, and requires a coordinated system-wide approach to unlock our full potential.



Ō tatou Waka | Our Transport

Transport includes all the networks and systems that allow us to get where we need to go. Without it we couldn't get to work or school, connect with people, spend time in our communities, or access businesses and markets. Our transport system includes the vehicles we use, the physical network, digital technologies, and transport services. Our transport lifts productivity and supports our wellbeing.



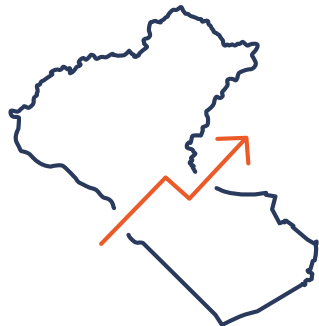
Tō tātou Whatuka Kahuraki - Kākāriki | Our Blue-Green Network

Our blue-green network is a series of spaces and corridors that connects water bodies, parks, green areas and the coast. Elements include streams, stormwater drains, and wetlands, as well as trees, reserves and greenways. The network is of immense value to us and benefits our wellbeing. A blue-green approach better reflects ki uta ki tai, which requires a whole-of-system view of the environment.



Ō tatou Hapori | Our People and Communities

Our people and communities are at the heart of Waikirikiri Selwyn. They deserve a place where they feel connected, supported, included and empowered to reach their potential. We need to ensure all people can live fulfilling lives into the future. Education, health, arts, culture, heritage, safety, community facilities, venues, events, sport and recreation support intergenerational wellbeing.



Tō tatou Ōhaka | Our Economy

Our economy is where we do business, produce goods and services, create, innovate, grow our knowledge, attract investment, and use our skills and talents. A thriving economy is essential for our wellbeing and shared prosperity. It needs to be inclusive, productive, sustainable and resilient to provide better job opportunities, higher wages, and a higher standard of living for our people and communities.

Te Ahuaka ā-Āhua Tāone

Urban Form Direction

Urban form is about how communities are designed and structured, the way they connect, and the location of different developments. Our direction for urban form is balanced growth where we grow both up and out in a way that promotes the connectivity and sustainability of Waikirikiri Selwyn.

This is done through:

- Greater intensification around centres, public transport stops and along public transport corridors.
- Greater housing choice with more affordable housing options.
- Thriving neighbourhoods that are well-designed, inclusive and connected which supports the needs of communities now and in the future.

Place

When we consider our urban form, particularly our built environment, it is clear that the mix of land uses, range of activities, and diversity of building types, design and density all shape our quality of life. We need to grow both up and out in the future, and ensure that we ‘do density well’ with careful consideration and thoughtful design.

Movement

We are focused on the movement of our people, with public transport and Mass Rapid Transit (quicker, more frequent, higher-capacity public transport) promoting connectivity and sustainability. This includes:

- Enhanced road-based public transport and a mass rapid transit route between Rolleston and Prebbleton.
- Passenger rail running through Rolleston North with connections to Dunsandel and Darfield that will support passenger rail extensions in our region.
- A network of road-based public transport that connects our towns and centres through to the wider public transport and mass rapid transit network.
- Integrating public transport and mass rapid transit with enhanced active transport networks (such as walking and cycling) in our towns to support accessibility.

Town Network

Our town network outlines the role and function of our towns as well as the relationship between towns within the network. It has been formed on the basis of:

- Population
- Location
- Centre(s), and
- Other significant features.



Te Kiteka Takiwā

District Picture



The District Picture is the spatial expression of the strategic direction of Waikirikiri Ki Tua Future Selwyn. Visit selwyn.govt.nz/future to explore the interactive map and see how different aspects are displayed, and where.

The map layers include key infrastructure, Christchurch international airport, urban growth, land transport, our green natural capital, freshwater, land use capability, and key constraints.





Waikirikiri Ki Tua

Future Selwyn