

MAYOR SAM'S NEWS

ISSUE 2 – AUTUMN 2021

— KIA ORA —

Last year I trialled this update and I'm pleased to say that it will now be a regular addition to your copy of the Selwyn Times each quarter. I hope you find it useful and that it gives you some detail about how we are working to help improve wellbeing for all our communities from Arthur's Pass to Taumutu.

I also hope it offers you a snapshot of what's happening in Selwyn and what our Council is doing to respond to your feedback. It's impossible to cover everything, so if you'd like to know more our Council website, www.selwyn.govt.nz, is a great place to start or you can follow me at facebook.com/samforselwyn for my very latest news.

Sam Broughton, Mayor of Selwyn



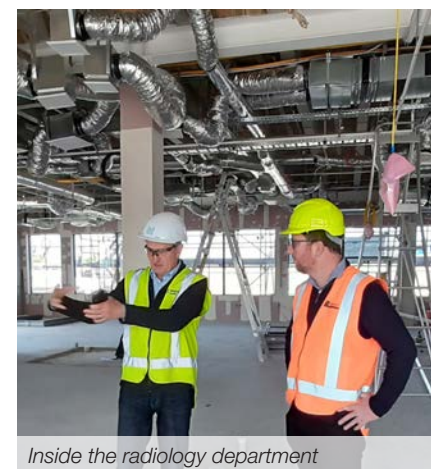
Bringing primary and specialist health care to the heart of Selwyn

It's always been a time consuming trip into Christchurch to get to a specialist clinic, finding and paying for a park is a pain and it can be a round trip of hours for a ten minute appointment. In 2017 we started to make plans to bring some of these specialist medical services closer to home and this year that's exactly what we will do. Last year construction started on the new Selwyn Health Hub in Rolleston, and the build is now well underway. I was recently given a tour and wanted to share the progress with you; it's looking great and is on time and on budget.

We've teamed up with the Canterbury District Health Board (CDHB) and Pacific Radiology, and in autumn this year we will hand them the keys to the shiny new building for them to begin fitting the specialist equipment that's needed to provide our

district with an amazing medical centre right on our doorstep. We already have some great health services in our district but the Health Hub will add greater flexibility, convenience and options for our communities by bringing services together in a 'one stop shop'.

The Hub will incorporate a state of the art radiology (MRI and CAT scan) facility and a primary birthing unit, which will sit alongside CDHB community health services and a general practice. I can't tell you the exact date the Hub will open as that will depend on how long it takes the CDHB to complete the specialist fit-out, but I hope we can make use of its expertise and technology before next summer. It's going to be a huge bonus for Selwyn.





Liz, Elliott (age 4) and Sam



Selwyn – the best place in New Zealand

Selwyn is such an awesome place to live and in a recent crime survey we came top of the list as the safest place to live in New Zealand. That's why more people and their whānau are choosing to move to Selwyn above any other district across our country. Our population has passed 69,000 and I can't see the trend slowing down. New businesses are opening up employment opportunities and we are one of the few districts in the country whose economy grew last year – despite COVID.

As we grow quickly we need to continually plan and prepare for future growth. New homes are popping up all over Selwyn and we need to ensure that growth continues in the right places. New development is much cheaper to maintain in the long term if it's closely connected to existing development and not too spread out. We also need to protect our productive soils and farms, so they can continue to produce food for the world into the future.

This year we are reviewing our Long-Term Plan for Selwyn which sets out how and where we will provide the services and infrastructure we all need and what it will cost. I am keen that our plan reflects your aspirations and that the next 10 years are as successful as the last decade. So please keep your eye out in the local papers and in social media for a call to read our consultation document and offer us your thoughts. Selwyn is awesome, let's work together to keep it that way.

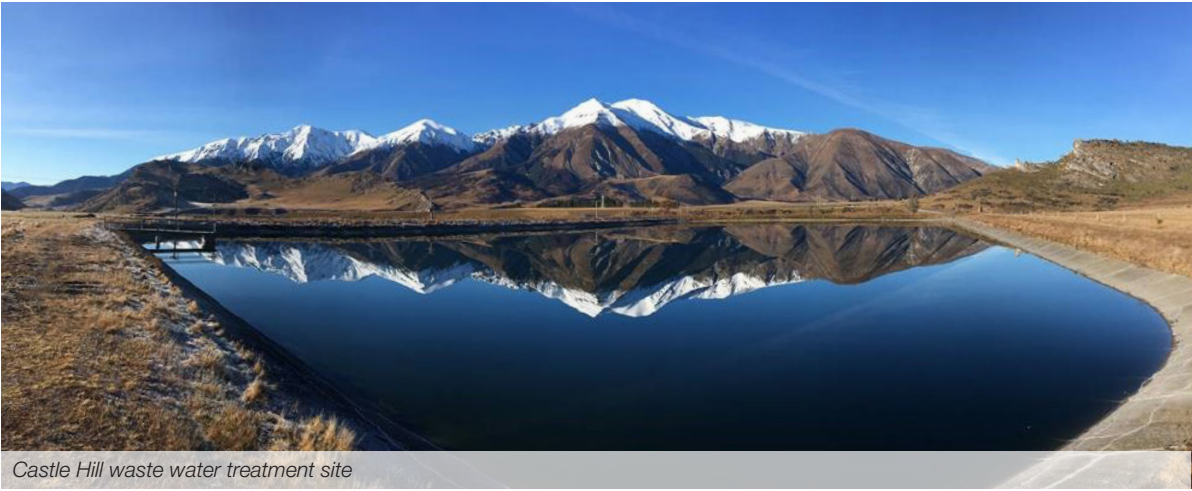
Government's water reforms

It's easy to turn on the tap and take for granted the clean water that comes out. Our Council takes pride in the fact that you can have confidence that your drinking water is safe and affordable, and that your wastewater is efficiently managed. We have some of the best and newest water infrastructure in New Zealand, but we are in the minority. Across the country much of the water infrastructure is broken and the Government wants to fix it. They are proposing that Councils join together into larger multi-regional groups to fix the problems and that those larger groups be responsible for how water services are delivered in the future.

As chairperson of the Canterbury Mayoral Forum I am now busy leading talks across our region with the Government, other Councils and Ngāi Tahu to determine the true state of Canterbury's water infrastructure, and to provide us with the

best information possible to make an informed decision about our future participation in this reform. Ultimately whatever is decided should improve our nation's water infrastructure in the long term although with Selwyn's water costs currently being the cheapest in the country, any change will ultimately result in price increases outside of Council control.

The Government granted our Council just over \$10 million to spend on water service improvements as an incentive to work with them on this reform and we've ring fenced most of that money to cover the cost of a much needed pipe to take sewage from Darfield to the Rolleston's wastewater treatment plant. Darfield is the biggest town in New Zealand that relies solely on septic tanks for its sewage. This proposed work will be part of the Long-Term Plan which you will be able to have a say on shortly.

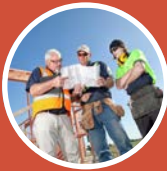


Castle Hill waste water treatment site

SELWYN FACTS



Just under 14,000 dog registrations issued in 2020



3,000 building consents issued in 2020



Selwyn – cheapest metered drinking water in New Zealand



Selwyn – officially the safest place in New Zealand



230 tonnes of contaminated recycling waste to landfill last year 😞



We have 300 metres of flying fox wires in our 63 parks



Your feedback is important and shapes our focus

I was delighted to read the results of our latest annual Selwyn Residents Survey which showed that 92% of you agreed with me when you said that Selwyn is a 'great place to live'. Three quarters also said they felt a sense of belonging and community which is terrific. It's important that we do these surveys to understand what's working and where we need to focus our efforts in the future.

You gave us top marks for parks and reserves, rubbish collection, recycling, playgrounds and libraries. However you have asked us to pull our socks up when it comes to our community run pools, local and urban roads and our public halls. I've taken that on board and will be working towards improvements in all those areas over the next year. When the survey was taken it wasn't long after lockdown and some of our pools and halls were closed or providing a limited service and this may have influenced the results a little, but I'm still working hard to improve in these areas.

Importantly 63% said you were satisfied with the overall Council performance, as much as I'd like that to be 100% I'm realistic and I know that we can't please all of the people all of the time.

If you took part in the survey thank you and if you want to read the full survey findings you can find it on our website.



KEEPING IT LOCAL



Rural dog park

After much public demand it's great to see the new off-leash dog park in Darfield next to McHugh's Forest Park so well used.



Community Directory

I love our new online Selwyn Community Directory with over 250 listings. If you're looking for something in Selwyn this is where you'll find it. Check out the directory on our Council website at www.selwyn.govt.nz.



In at the deep end

The 10-lane, 25 metre extension to the Selwyn Aquatic Centre is forging ahead. The roof's on and you can look forward to diving in by spring this year.



Climate change

I'm delighted that our Council has recently adopted a formal climate change policy. Now whenever we do something we also must consider how it could impact on our environment.



Recycling pop-up sites

Recently our two Malvern and Ellesmere recycling day drop-off sites helped you recycle more than 23 tonnes of items from garden waste to tyres and old TVs. These have all now been recycled.



Cycling across Selwyn

It was fantastic to be able to appreciate the true beauty of our district as I cycled the 185km across Selwyn over three days in support of men's health.

If you have any questions or feedback please contact me at sam.broughton@selwyn.govt.nz or on Facebook at facebook.com/selwynforselwyn.
View the latest issue online at selwyn.govt.nz/mayor.

