

**MINUTES OF AN EXTRAORDINARY MEETING
OF THE SELWYN DISTRICT COUNCIL
HELD IN THE COUNCIL CHAMBERS, ROLLESTON ON
WEDNESDAY 20 JUNE 2018 AT 1.00PM**

PRESENT

Mayor S T Broughton, Councillors J B Bland, D Hasson, M P Lemon, M B Lyall D P McEvedy, J B Morten, R H Mugford, N C Reid & C J Watson

ATTENDEES

Messrs D Ward (Chief Executive), G Bell (Corporate Services Manager), M Washington (Assets Manager), D Marshall (Property and Commercial Manager), A Walker (Communication Advisor), T Harris (Environmental Services Manager), J Burgess (Planning Manager), M Rykers (Manager Open Space and Property), J Reid (Major Projects Property Manager), S Hill (Business Relationship Manager), Ms T Davel (Governance Support Co-ordinator), Mrs D Kidd (Community Relations Manager), and Mrs N Smith (Executive Assistant)

APOLOGIES

Apologies for absence were received from Councillor Miller and Councillor Alexander.

Moved Councillor Watson / **Seconded** Councillor Hasson

‘That Council receives the apologies for absence from Councillor Miller and Councillor Alexander.’

CARRIED

CONFIRMATION OF MINUTES

- 1. Minutes of the Selwyn District Council 2018-2028 Draft Long Term Plan Deliberations held at the Selwyn District Council Chambers, on Wednesday 30 May and Thursday 31 May**

Accepted without any changes or discussion.

Moved Councillor Lyall / **Seconded** Councillor Reid

‘That the Council confirms the minutes of the Selwyn District Council 2018-2028 Draft Long Term Plan 2018-2028 Deliberations held on Wednesday 30 May 2018 and Thursday 31 May 2018, as circulated.’

CARRIED

REPORTS

1. **Corporate Accountant**

Adoption of the Revenue and Financing Policy

Mayor Broughton took the opportunity to thank the Councillors for post-election retreat articulation where they set out their aspirations for the district going forward, and how these have been shaped and moulded to reach the point of adopting today's Long Term Plan.

Mayor Broughton then thanked – in particular - the Chief Executive for his leadership of the Long Term Plan Process, and the Corporate Services Manager for managing the financial aspects of the process. He further thanked the many other staff involved in the Long Term Plan process.

Mayor Broughton then acknowledged all of the submitters for their time in sharing their beliefs, hopes and dreams about what Council should, and should not be involved in. Lastly he acknowledged the Councillors for their consideration of all submissions which is enabling them to sign off on the Long Term Plan today.

Mayor Broughton confirmed that the Long Term Plan 2018-2028 had been reviewed by the Auditors who confirmed they were satisfied with the Plan, stating that it is fit for purpose.

The Corporate Services Manager set out the process of adoption today, and the required order of adoption.

The Corporate Services Manager stated that the Revenue and Financing Policy sets the overall framework for how Council funds work. He noted that the Policy was considered late last year, and again in March this year before the consultation document was adopted. He stated that no submissions were received on this Policy, and that only minor changes were made to the document prior to today's meeting.

Councillor McEvedy referred to the rating area on the Swimming Pool rate map, noting Rakaia Huts is in Zone 3, but is not shown on the map as Zone 3.

Councillor Lemon also referred to the same map noting that the legend was incorrect – and is showing the wrong dollar values.

The Corporate Services Manager confirmed these errors will be corrected.

Moved Councillor Morten / **Seconded** Councillor Lyall

'That the Council:

- (a) confirms that it has considered the requirements of Section 101(3) of the Local Government Act 2002 in reviewing the Revenue and Financing Policy; and*
- (b) adopts the Revenue and Financing Policy.'*

CARRIED

2. Corporate Services Manager
Development Contributions Policy

The Corporate Services Manager noted that the Policy sets out Developers' contributions associated with the cost of growth. He noted that the following changes to the Policy, being: new charges for water in Kirwee and Leeston, wastewater in Ellesmere and in an ODP 4 area. Administration changes included discounts for smaller properties; and a change in dollar values regarding population growth and interest rates.

The Corporate Services Manager noted there were a couple of submissions on relating to the Policy; one in favour; and one against.

Moved Councillor Bland / **Seconded** Councillor Lyall

'That the Council:

- a) confirms that it has considered the requirements of Section 101(3) of the Local Government Act 2002 in reviewing the Development Contributions Policy;*
- b) adopts the Development Contributions Policy.'*

CARRIED

3. Corporate Services Manager
Rate Remissions Policy Including Maori Freehold Land

The Corporate Services Manager confirmed that the Policy sets out the remissions for various groups or activities.

The Corporate Services Manager noted that there were no submissions received on this Policy. He confirmed that there were some minor updates to the policy made following the consultation process.

Moved Councillor Watson / **Seconded** Councillor Hasson

'That the Council adopts the Rate Remissions Policy Including Maori Freehold Land.'

CARRIED

4. Corporate Services Manager

Adoption of the Long Term Plan 2018-2028 including the 30 Year Infrastructure Strategy 2018-2048

The Corporate Services Manager confirmed that this Report and the accompanying Long Term Plan 2018-2028 sets out the objectives, programmes, performance measures, and strategy for Council and the District over the next ten year period.

The Corporate Services Manager noted that the Long Term Plan was updated in light of submissions and hearings, outlining the carry forward projects, changes associated with the NZTA roading programme; the updated dividend information from Orion New Zealand Limited; and the noted change in Chinese legislation associated with recycling.

The Corporate Services Manager then noted the changes made following the deliberations being: a Grant for St John; funding for lighting upgrade at Brookside Park; and the commercial development in Rolleston.

The Corporate Services manager confirmed that Audit New Zealand has audited and accepted the Long Term Plan for 2018-2028 based on Council not making any significant changes to the document at today's Extraordinary meeting. The Auditor confirms that the Long Term Plan 2018–2028 is based on sound information and is fit for purpose.

Moved Councillor Mugford / **Seconded** Councillor Lemon

'That The Council adopts the Long Term Plan 2018-28 including the 30 Year Infrastructure Strategy 2018 – 2048.'

CARRIED

5. Corporate Accountant

Setting of rates for the year 1 July 2018 to 30 June 2019

The Corporate Services Manager confirmed that the rates presented are set in accordance with the adopted LTP and are applied for the coming year. He confirmed that the corrections noted to the swimming pool map will be rectified.

Councillor McEvedy stated that whilst this is what people are going to pay, Council needs to acknowledge a failure in its rating system. He noted that some of the more disadvantaged communities do struggle with the rate lifts year-on-year, and Council needs to keep them at the forefront of its minds when making changes.

Councillor McEvedy then stated that following today's meeting, Council needs to take on a body of work of reviewing the rating structure again citing disadvantaged communities; and further noting rural communities. He confirmed this has been a good process to date, but now Council needs to lift its eyes and review the structure, and would like to see this initiated shortly.

A. That the Selwyn District Council sets the following rates under section 23 of the Local Government (Rating) Act 2002 (the "Act") for the financial year commencing on 1 July 2018 and ending on 30 June 2019. (All rates set are GST inclusive.)

Unless defined otherwise in the interpretation section below, terms used in this recommendation have the same meaning as given in the Act.

1. Uniform Annual General Charge

*A uniform annual general charge set under section 15 of the Act of \$235.00 on each rating unit in the Selwyn District (the "**District**"), to be used for the general expenditure of the District as a whole.*

2. General Rate

A general rate set under section 13 of the Act of \$0.00085768 in the dollar of capital value on each rating unit in the District, to be used for the general expenditure of the District as a whole.

3. Community Board Targeted Rate

A targeted rate set under section 16 of the Act of \$41.00 on each rating unit in the Malvern Ward (as identified on Plan 1) to fund the operations of that Community Board.

4. Canterbury Museum Levy Funding Targeted Rate

A targeted rate set under section 16 of the Act of \$31.00 on each rating unit in the District, to be used for the funding of the Canterbury Museum levy expenditure under the Canterbury Museum Trust Board Act 1993.

5. Community Centre Targeted Rate

*A targeted rate of \$100.00 set under section 16 of the Act on each separately used or inhabited part of a rating unit ("**SUIP**") in the District, for the purpose of providing and maintaining various community centres throughout the Selwyn District.*

6. Community Centre Loan Targeted Rates

Unless the relevant eligible ratepayer has elected to make a lump sum contribution in respect of the relevant community centre¹, the following targeted rates are set under section 16 of the Act per rating unit situated in the following locations (as identified in Plan 2):

Location	Targeted Rate per Rating Unit
Glentunnel	\$38.00
Greendale	\$141.00

7. Recreation Reserve Targeted Rate

- a. *A targeted rate of \$125.00 set under section 16 of the Act on each SUIP in the District, for the purpose of providing and maintaining various recreation reserves and facilities throughout the Selwyn District.*

¹ Refer section 117J Local Government (Rating) Act 2002.

8. Sewerage Targeted Rates

- a. Targeted rates set under section 16 of the Act on all:
- SUIPs which are; or
 - rating units which may be,
- connected to Council provided sewerage treatment and disposal systems as follows:

Category	Differential basis – number of pans ²	Targeted rate (per rating unit)
SUIP connected to Council provided sewerage treatment and disposal systems	<ul style="list-style-type: none">• 4 or fewer pans - \$542.00 per SUIP• 5 or more pans - \$542.00 plus an additional \$135.50 per pan in excess of 4 pans per SUIP	Nil
Rating unit not connected to available Council provided sewerage treatment and disposal systems	Nil	\$271.00

- b. A targeted rate set under section 16 of the Act of \$73.00 per SUIP in Darfield for the purpose of undertaking sewerage investigations.

9. Sewerage Loan Targeted Rates

Unless the relevant eligible ratepayer has elected to make a lump sum contribution in respect of the relevant sewerage scheme³, the following targeted rates are set under section 16 of the Act in relation to the following categories of rateable land:

- \$226.51 per rating unit within the Leeston Sewerage Scheme Area.
- \$557.04 per rating unit within the Rolleston Existing Township.
- \$286,330.45 for the rating unit at 41 Westland Place, Rolleston, valuation roll number 2354168058 (land occupied by Westland Milk and connected to the Eastern Selwyn Sewerage Scheme).
- \$3,682.27 per hectare for the rating unit at Jones Road, Rolleston, valuation roll number 2354167104 (connected to the Eastern Selwyn Sewerage Scheme).
- \$4,108.97 per hectare for the rating unit at Jones Road, Rolleston, valuation roll number 2354167113 (connected to the Eastern Selwyn Sewerage Scheme).

² A rating unit used primarily as the residence for one household shall be deemed to have not more than one pan in accordance with Schedule 3 of the Local Government (Rating) Act 2002.

³ Refer section 117J Local Government (Rating) Act 2002.

- f. \$4,107.77 per hectare for those rating units at Jones Road, Rolleston, valuation roll numbers 2354167300 and 2354167302 (connected to the Eastern Selwyn Sewerage Scheme).
- g. \$4,108.30 per hectare for those rating units at Jones Road, Rolleston, valuation roll numbers 2354167312, 2354167305 and 2354167304 (connected to the Eastern Selwyn Sewerage Scheme).
- h. \$377.14 per rating unit within the Southbridge Sewerage Scheme Area.
- i. \$366.42 per rating unit within the Springston Sewerage Scheme Area.
- j. \$685.64 per rating unit within the Tai Tapu Sewerage Scheme Area.

10. Refuse Collection and Disposal Targeted Rates

Targeted rates set under section 16 of the Act on all SUIPs where refuse services are provided or available as follows:

Location	Optional Service Provided			Uniform Basis per SUIP where Service Available
Arthur's Pass	Nil (rate set on availability).			\$121.00 per SUIP for refuse and recycling service.
Castle Hill	Nil (rate set on availability).			\$121.00 per SUIP for refuse and recycling service.
Lake Coleridge	Nil (rate set on availability).			\$79.00 per SUIP for refuse service.
Balance of the District (on a refuse and recycling collection route)	\$136.40 per 80 Litre refuse Wheelie Bin.	\$407.00 per 240 Litre refuse Wheelie Bin.	\$210.00 per Organic Wheelie Bin.	\$80.00 per SUIP for recycling collection and disposal and \$26 per SUIP for refuse collection and disposal.

11. Water Supply Targeted Rates

Targeted rates set under sections 16 and 19 of the Act, on all;

- SUIPs or rating units which are; or
- rating units which may be,

connected to Council provided water supply as follows:

Category	Differential basis	Targeted rate (per SUIP)	Targeted rate (per rating unit)
<i>SUIP connected to Council provided metered water supply.</i>	<i>\$0.46 per m³ of water</i>	<i>\$235.00</i>	<i>Nil</i>
<i>Rating unit within 100 metres of, and able to be connected to, but not connected to, Council provided metered water supply.</i>	<i>Nil</i>	<i>Nil</i>	<i>\$235.00</i>
<i>Rating unit connected to a Council provided Restricted Water Supply.</i>	<i>\$168 per water unit⁴</i>	<i>Nil</i>	<i>\$235.00</i>
<i>Rating unit with Restricted Water Supply available but no water being drawn.</i>	<i>Nil</i>	<i>Nil</i>	<i>\$235.00</i>

12. Water Loan Targeted Rates

Unless the relevant eligible ratepayer has elected to make a lump sum contribution in respect of the relevant water supply scheme⁵, the following targeted rates are set under section 16 of the Act on rateable land connected to the following water schemes on a per rating unit basis:

Water scheme	Targeted Rate per rating unit
<i>Doyleston</i>	<i>\$408.80</i>
<i>Prebbleton (Kingcraft Drive)</i>	<i>\$405.89</i>
<i>Rolleston (Jones Road)</i>	<i>\$415.47</i>

13. Water Race (Service and Amenity) Targeted Rates

- a. Water race (service) targeted rates set under section 16 of the Act on all rating units which have available water race service in:

- the District; and
- that portion of Christchurch City Council district where the Paparua Water Race is available

of \$300.00 per rating unit and \$17.00 per hectare or part thereof, in each rating unit.

- b. A water race (amenity) targeted rate set under section 16 of the Act of \$20.00 on each rating unit in the District which does not have available water race service.

The water race (Service and Amenity) targeted rates are for the purpose of maintaining and providing the water race systems within the District and also that portion of the Christchurch

⁴ A water unit is supply of up to 1 m³ of water over a 24 hour period, regardless of whether this supply is taken.

⁵ Refer section 117J Local Government (Rating) Act 2002.

City Council district where Paparua water race water is available. In the Paparua water race area irrigation charges are also imposed.

14. Land Drainage and River Works Targeted Rates

- a. Targeted rates set under section 16 of the Act on the capital value of all rating units in the area classified for the Greenpark Subdivision as follows:

Category - Where land situated in Greenpark Subdivision (as identified on Plan 3)	Targeted rate (per dollar of capital value of rating unit)
<i>Class B</i>	\$0.000516
<i>Class C</i>	\$0.000373
<i>Class D</i>	\$0.000372
<i>Class E</i>	\$0.000154
<i>Class F</i>	\$0.000098

- b. Targeted rates set under section 16 of the Act on the capital value of all rating units in the area classified for the L2 Subdivision as follows:

Category - Where land situated in L2 Subdivision (as identified on Plan 4)	Targeted rate (per dollar of capital value of rating unit)
<i>Class A</i>	\$0.000274
<i>Class B</i>	\$0.000171
<i>Class C</i>	\$0.000110
<i>Class D</i>	\$0.000072
<i>Class E</i>	\$0.000056
<i>Class F</i>	\$0.000037

- c. Targeted rates set under section 16 of the Act on all rating units in the area classified for the Ellesmere No. 3 Subdivision calculated as follows:

Category - Where land situated in Ellesmere No. 3 Subdivision (as identified on Plan 5)	Targeted rate (per dollar of capital value of rating unit)	Targeted rate (fixed amount on each rating unit)
<i>Poor drainage area</i>	\$0.000155	\$61.00
<i>Imperfectly drained</i>	\$0.000115	\$61.00
<i>Moderately well drained</i>	\$0.000075	\$61.00
<i>Well drained</i>	\$0.000035	\$61.00

- d. Targeted rates set under section 16 of the Act on the area of all rating units in the area classified for Ellesmere No. 4 (Osbornes Drain) Subdivision calculated as follows:

Category - Where land situated in Ellesmere No. 4 (Osbornes Drain) Subdivision (as identified on Plan 6)	Targeted rate (per hectare of rating unit)
<i>Class A</i>	\$27.05
<i>Class B</i>	\$17.25

Class C	\$2.30
----------------	---------------

- e. A targeted rate set under section 16 of the Act of \$0.000487 in the dollar on the capital value of all rating units in the Hororata River Control Rating Area (as identified on Plan 7).
- f. Targeted rates set under section 16 of the Act on all rating units in the Leeston Drainage District as follows:

Categories		Targeted rate (per hectare or part thereof of rating unit)	Uniform targeted rate (per rating unit)
Where land situated in Leeston Drainage District (as identified on Plan 8)	Area		
Class A	Greater than 4.13 hectares	\$13.554742	Nil
	4.13 hectares or less	Nil	\$56.00
Class B	Greater than 5.24 hectares	\$10.689862	Nil
	5.24 hectares or less	Nil	\$56.00
Class C	Greater than 6.27 hectares	\$8.933420	Nil
	6.27 hectares or less	Nil	\$56.00
Class D	Greater than 10.82 hectares	\$5.177413	Nil
	10.82 hectares or less	Nil	\$56.00

- g. Targeted rates set under section 16 of the Act on the area of all rating units in the area classified for the Taumutu Drainage District calculated as follows:

Category - Where land situated in Taumutu Drainage District (as identified on Plan 9)	Targeted rate (per hectare of rating unit)
Class A	\$30.973540
Class B	\$31.613405

- h. Targeted rates set under section 16 of the Act on the capital value of all rating units in the area classified for the Taumutu Special Drainage District (Culverts Maintenance) calculated as follows:

Category - Taumutu Special Drainage District (Culverts Maintenance)	Targeted rate (per dollar of capital value of rating unit)
--	---

Maintenance) (as identified on Plan 10)	
Class A	\$0.001409
Class B	\$0.000392
Class C	\$0.000203
Class D	\$0.000126

- i. Targeted rates set under section 16 of the Act on the area of all rating units in the area classified for the Wairiri Valley Drainage District calculated as follows:

Category - Where land situated in Wairiri Valley Drainage District (as identified on Plan 11)	Targeted rate (per hectare of rating unit)
Class A	\$5.029013
Class C	\$2.968716
Class E	\$2.616250

15. Swimming Pools Targeted Rate

A targeted rate set under section 16 of the Act for the purpose of providing and maintaining swimming pools in the Selwyn District. The rate is set differentially based on location and assessed per SUIP within the Zones identified on Plan 12:

Swimming Pools Zone 1	\$174.00
Swimming Pools Zone 2	\$122.00
Swimming Pools Zone 3	\$43.00

Zone Rating Areas

Zone 1 (incorporating Rolleston).

Zone 2 (incorporating Broadfield, Courtenay, Darfield, Dunsandel, Greendale, Halkett, Killinchy, Kimberley, Kirwee, Ladbrooks, Lakeside, Leeston, Lincoln, Osborne Park, Prebbleton, Rhodes Park, Sheffield, Springston, Southbridge, Templeton, Weedons and West Melton).

Zone 3 (incorporating Arthurs Pass, Castle Hill, Glentunnel/Coalgate, Hororata, Kowai Pass, Lake Coleridge, Rakaia Huts, Snowdon and Whitecliffs).

16. Library Targeted Rate

A targeted rate set under section 16 of the Act of \$190.00 on each rating unit in the District, to be used for providing the District library service.

17. Stormwater Targeted Rate

A targeted rate set under section 16 of the Act of \$89.00 on each SUIP in Arthur's Pass, Castle Hill, Darfield, Doyleston, Dunsandel, Edendale, Glentunnel, Hororata, Kirwee, Lake Coleridge, Leeston, Lincoln, Prebbleton, Rakaia Huts, Rolleston, Southbridge, Springfield, Springston, Tai Tapu, Templeton (Claremont), West Melton and Whitecliffs (as identified in Plan 13), for the purpose of providing and maintaining stormwater

systems.

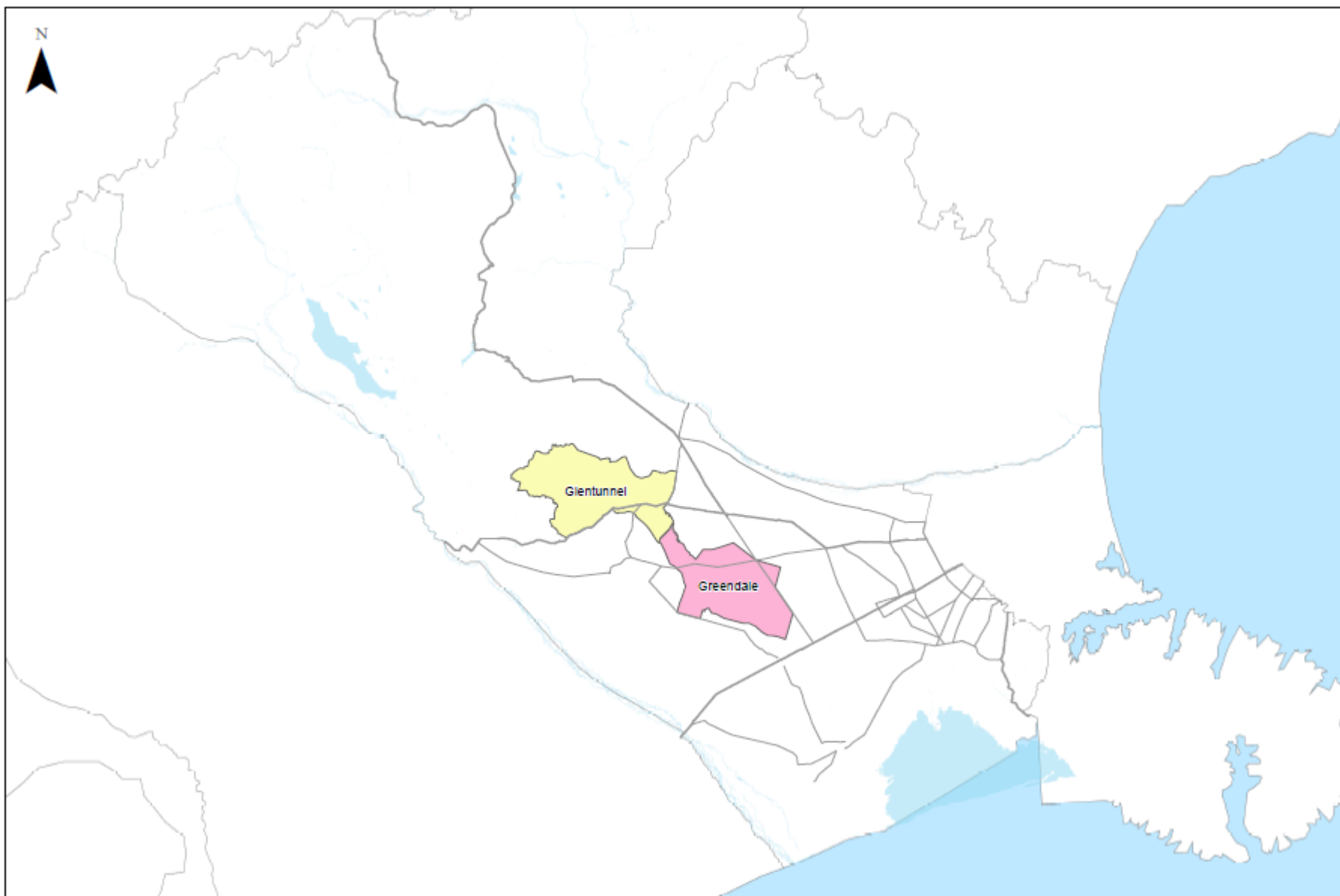
18. Supporting plans

- *Plan 1: Community Board Targeted Rate*
- *Plan 2: Community Centre Loan Targeted Rate*
- *Plan 3: Greenpark Subdivision*
- *Plan 4: L2 Subdivision*
- *Plan 5: Ellesmere No.3 Subdivision*
- *Plan 6: Ellesmere No.4 (Osbornes Drain) Subdivision*
- *Plan 7: Hororata River Control Rating Area*
- *Plan 8: Leeston Drainage District Targeted Rates*
- *Plan 9: Taumutu Drainage District*
- *Plan 10: Taumutu Special Drainage District*
- *Plan 11: Wairiri Valley Drainage District*
- *Plan 12: Swimming Pools Targeted Rate*
- *Plan 13: Stormwater Targeted Rate*



Date: 12/08/2018

Plan 1: Community Board Targeted Rate



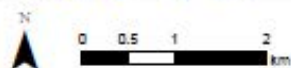
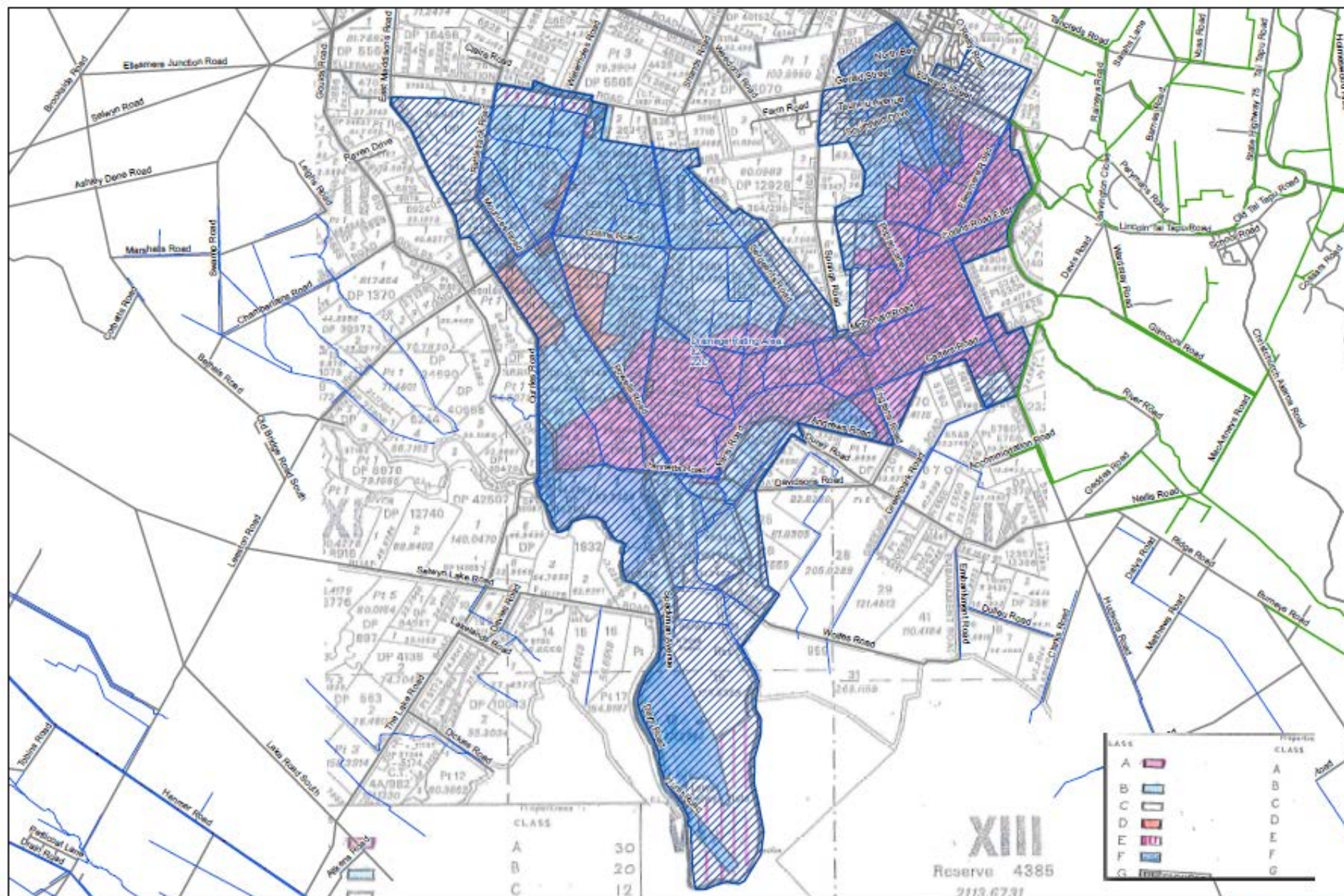
Date: 13/06/2018

Plan 2: Community Centre Loan Targeted Rate





Date: 12/06/2018

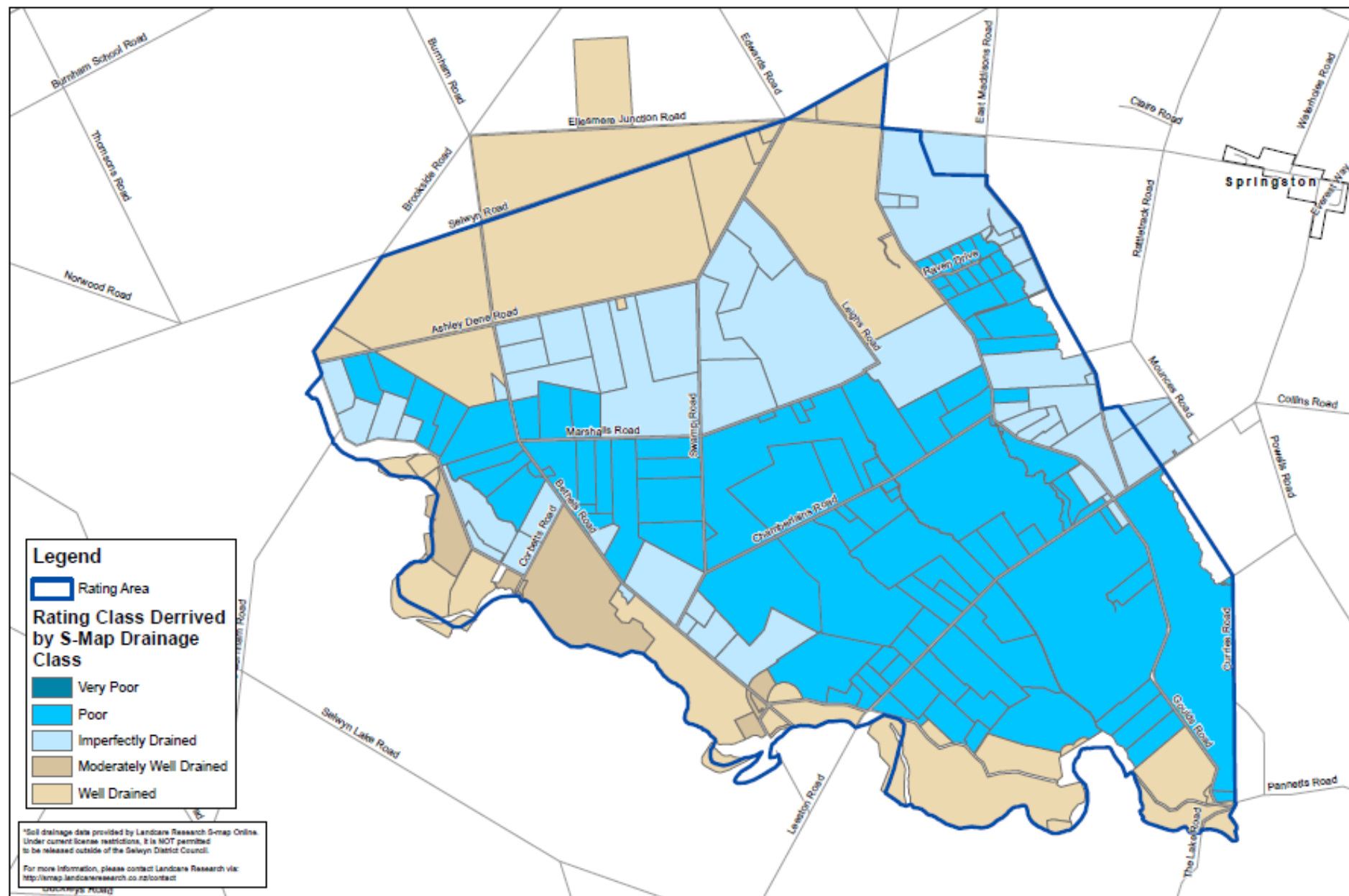


Drainage Rating Areas

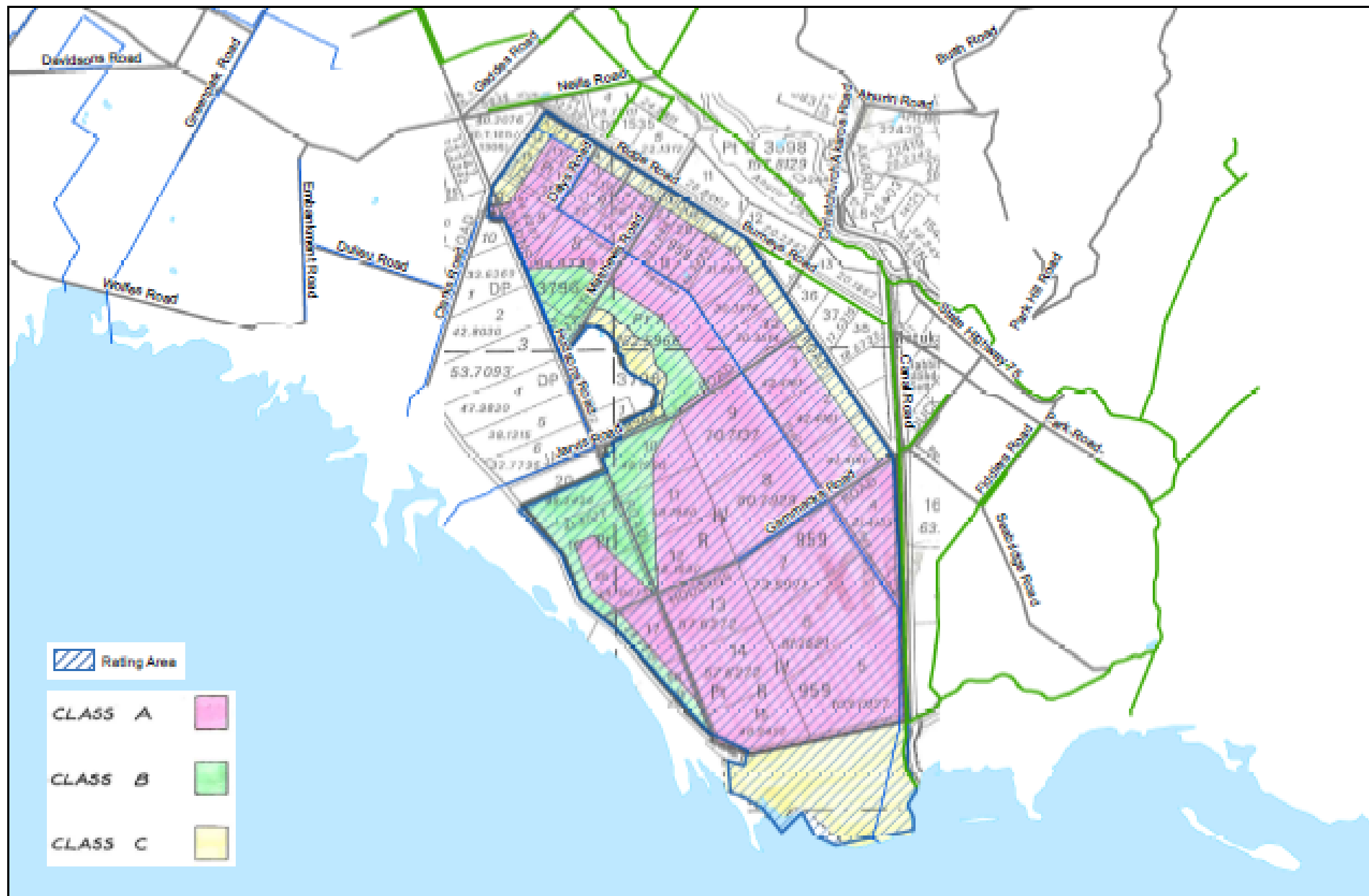
Plan 4: L2 Subdivision

Date: 12/06/2018

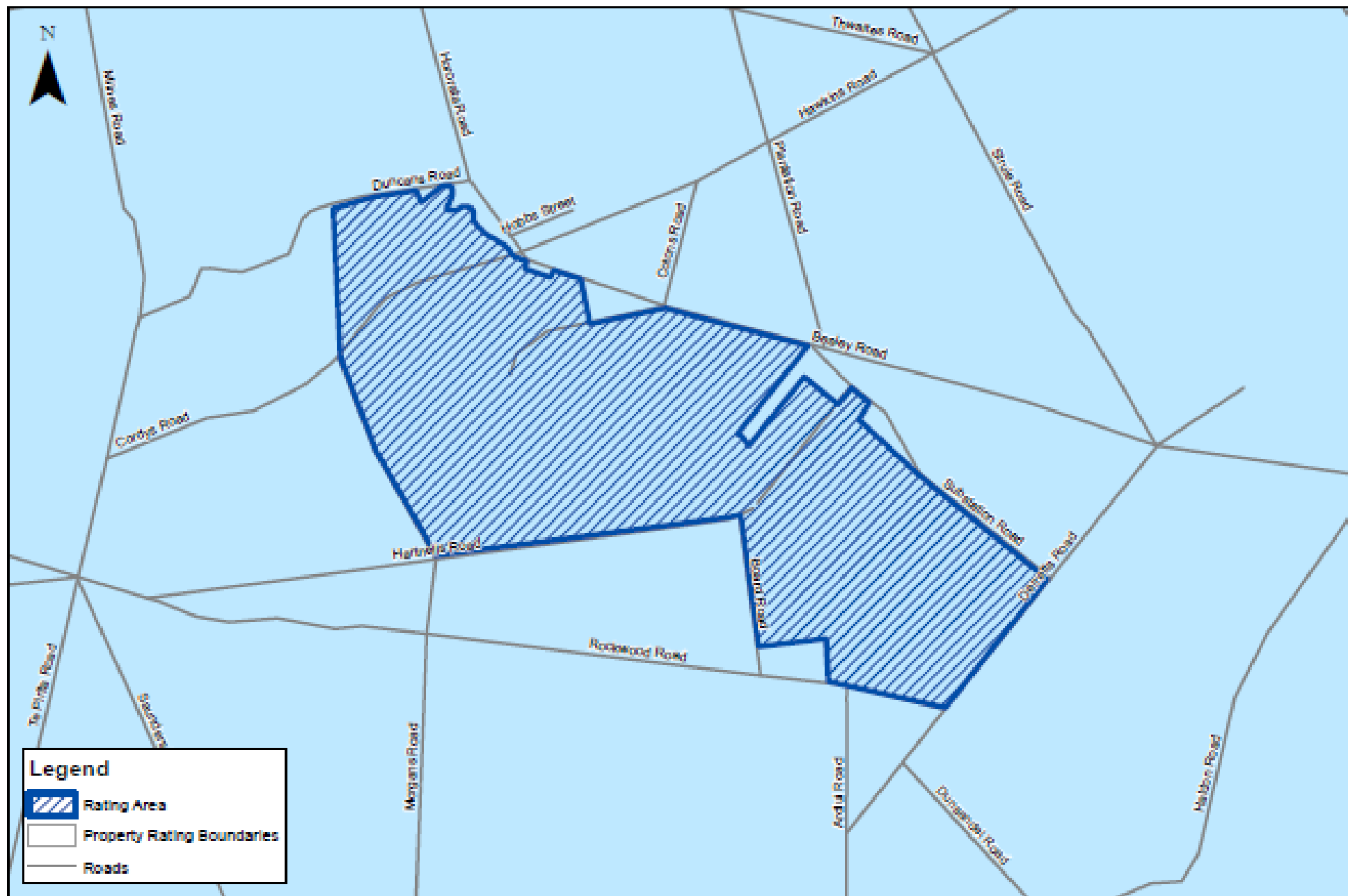




Plan 5: Ellesmere No. 3 Subdivision

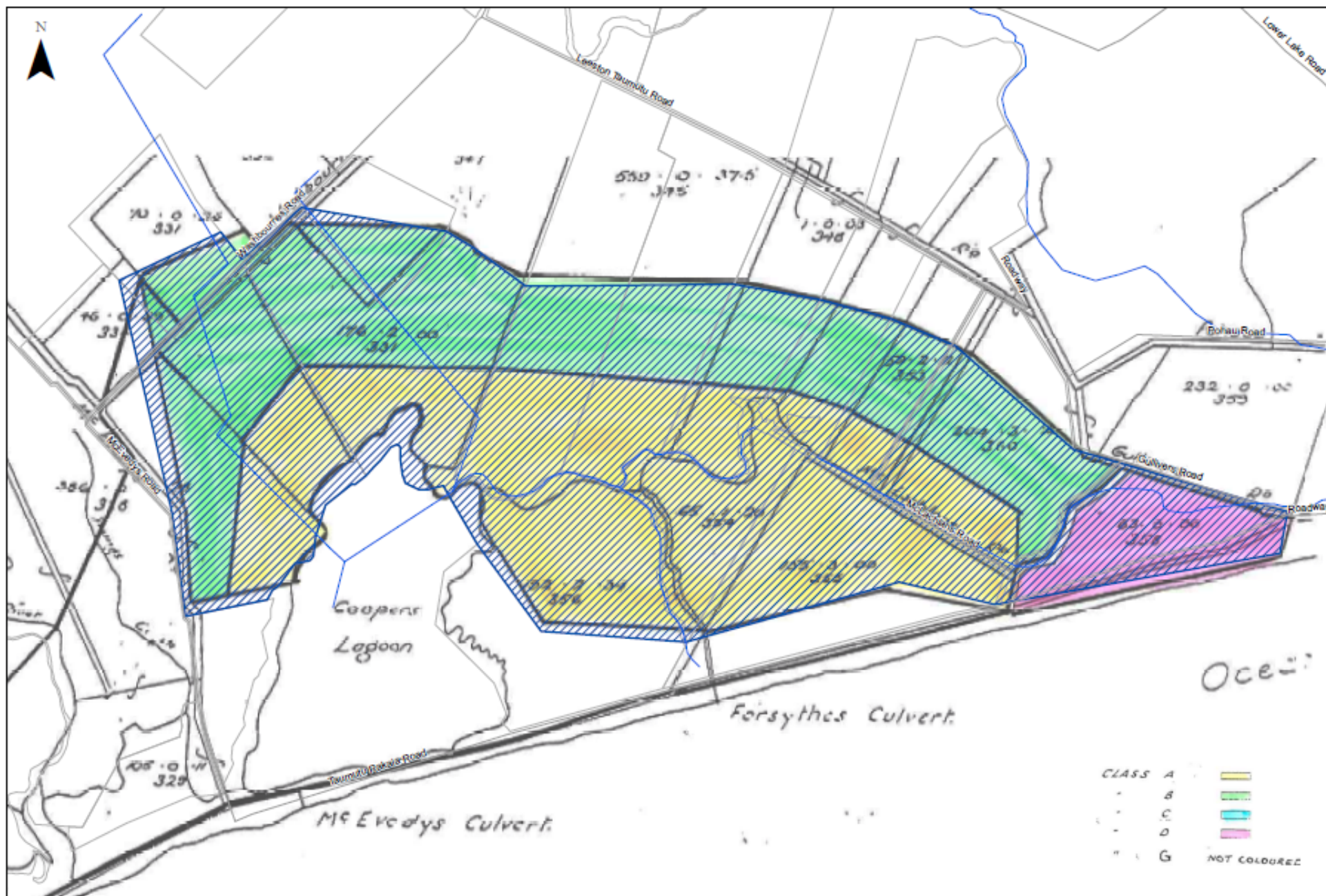


Plan 6: Ellesmere No. 4 (Osbornes Drain) Subdivision



0 0.5 1 2
km

Plan 7: Hororata River Control Rating Area



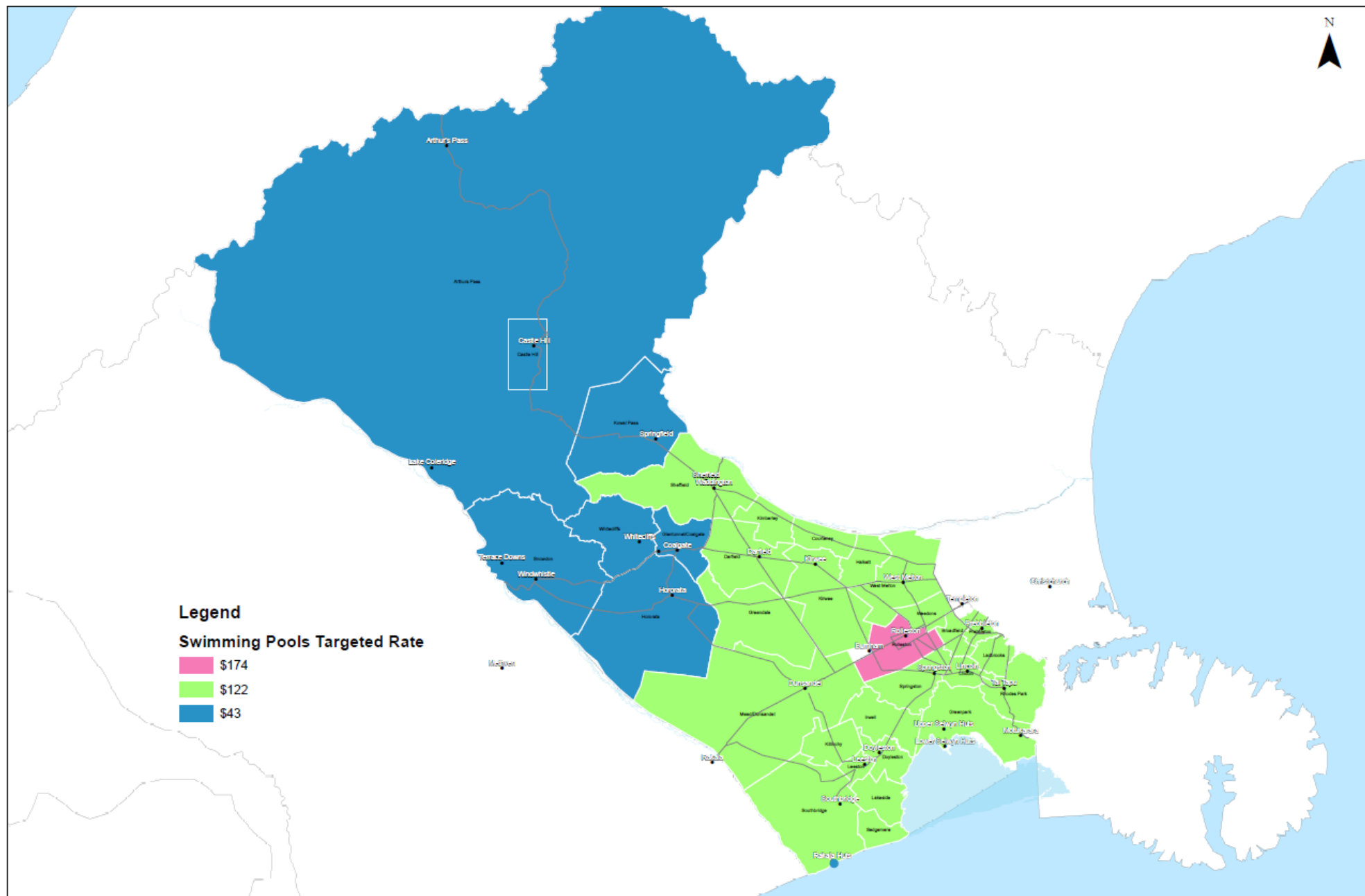
0 250 500 1,000
m

 Rating Area

Plan 9: Taumutu Drainage District



Date: 13/06/2018



B. That the above rates (other than targeted rates for metered water supply set on a differential basis) shall be for the financial year commencing on the 1st July 2018 and concluding on the 30th June 2019, and shall be payable in the four equal instalments by the following dates:

Instalment One:

Due and payable on 15th September 2018. Final day for payment will be 15th September 2018.

Instalment Two:

Due and payable on 15th December 2018. Final day for payment will be 15th December 2018.

Instalment Three:

Due and payable on 15th March 2019. Final day for payment will be 15th March 2019.

Instalment Four:

Due and payable on 15th June 2019. Final day for payment will be 15th June 2019.

C. That the above targeted rates for metered water supply set on a differential basis shall be for the financial year commencing on the 1st July 2018 and concluding on the 30th June 2019, and shall be payable in two instalments on the following dates:

Instalment One:

Where connected to Council provided metered water supply (Edendale, West Melton, Claremont, Leeston, Prebbleton) due and payable on 20th October 2018.

Where connected to Council provided metered water supply (Darfield, Springfield, Kirwee, Johnson Road, Sheffield) due and payable on 20th November 2018.

Where connected to Council provided metered water supply (Rolleston, Armack Drive, Raven Drive, Jowers Road, Dunsandel) due and payable on 20th December 2018.

Where connected to Council provided metered water supply (Doyleston, Lincoln, Tai Tapu, Te Pirita, Rakaia Huts, Southbridge, Springston) due and payable on 20th January 2019.

Instalment Two:

Where connected to Council provided metered water supply (Edendale, West Melton, Claremont, Prebbleton, Leeston) due and payable on 20th April 2019.

Where connected to Council provided metered water supply (Darfield, Sheffield, Springfield, Kirwee, Johnson Road) due and payable on 20th May 2019.

Where connected to Council provided metered water supply (Rolleston, Armack Drive, Raven Drive, Jowers Road, Dunsandel) due and payable on 20th June 2019.

Where connected to Council provided metered water supply (Doyleston, Lincoln, Tai Tapu, Te Pirita, Rakaia Huts, Southbridge, Springston) due and payable on 20th July 2019.

D. That the Council applies rates penalties as follows:

- a) A charge of 10 percent on so much of any instalment for rates (other than targeted rates for metered water supply set on a differential basis) that has been assessed after 1st July 2018 and which is unpaid will be added on the following dates:

Instalment One	16 th September 2018
Instalment Two	16 th December 2018
Instalment Three	16 th March 2019
Instalment Four	16 th June 2019

- b) Previous years' rates (other than targeted rates for metered water supply set on a differential basis) including penalties assessed on or prior to 1st July 2018, and which remain unpaid on 1st July 2018, will have a further 10 percent added on 1st July 2018.

E. That the Council delegates authority to apply the Council's policy of remission on penalty rates to the Corporate Services Manager.

INTERPRETATION

- All amounts are GST inclusive.
- All references to the Act are to the Local Government (Rating) Act 2002.
- All references to District are to the Selwyn District.
- Capital value has the meaning set out in section 2(1) of the Rating Valuations Act 1998.
- Pan means water closet or urinal.
- Separately used or inhabited part of a rating unit ("SUIP") means any part of a rating unit separately used or inhabited by the ratepayer, or by any other person, having a right to use or inhabit that part by virtue of a tenancy, lease licence, or other agreement, or any part or parts of a rating unit that are used or occupied by the ratepayer for more than one single use. Separately used or inhabited parts include:
 - A residential, small holding, or farmland property that contains two or more separately occupiable units, flats or houses each of which is separately inhabited or is capable of separate habitation i.e. has independent kitchen facilities.
 - A commercial premises that contains separate shops, kiosks, other retail or wholesale outlets, or offices, each of which is operated as a separate business or is capable of operation as a separate business.

CARRIED


In closing the meeting, the Chief Executive then referenced Councillor McEvedy's comments regarding his request for Council to undertake a rating structure review. He noted that it is quite prudent to undertake the review, and Council should look to do this in conjunction with Central Government's work on the review of the 'Shand Report'.

The Chief Executive then thanked the Corporate Services Manager for his work in bringing the Long Term Plan process to its conclusion. He further thanked all staff involved in the process noting they have produced an incredibly important document which will provide Council with a solid platform to help shape the growing document. He then thanked Mayor and Elected Representatives for the way they collectively engaged with staff on this project.

In his final comments, the Chief Executive thanked the communities who have provided Council with very valuable feedback as part of the submission process.

The meeting closed at 1.22pm.

DATED this 6 day of July 2018



MAYOR